



EVOD PRO-V2

THIS KIT CONTAINS:

- 1 X EVOD PRO-V2
- 1 X CLOCC NiCr 1.0 Ohm
- 1 X CLOCC SUS316L 0.5 Ohm
- 1 X Set of seal ring
- 1 X Pryex Glass
- 1 X USB Cable
- 1 X Manual

EVOD PRO-V2

- Diameter: 22mm
- Length: 138.5mm
- Weight: 134g
- Capacity: 4mL
- Output power: Max 30W
- Capacity: 2500mAH (Built-in)
- Coil resistance: above 0.15 Ohm
- Coil type: CLOCC, CLRBA
- Charging: Micro USB
- Protection: short circuit, over charge and overuse protection

- Strengthen Pyrex glass
- Sliding symmetrical air flow valve
- Replaceable drip tip

Remarks:

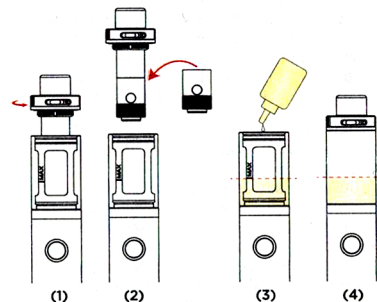
EVOD Pro-V2 can install the CLOCC and CLRBA only. CLOCC must not be "Dry Burned", user needs to ensure that the CLOCC is soaked with E-Juice before firing (input power). For new CLOCC, fill the E-juice into the EVOD Pro V2, wait for 30 seconds for the cotton to saturate with juice before firing. To disassemble/assemble the tank, hold the top cover and the mod, not the Pyrex glass, that may break the glass and get hurt. The information contained in this manual is subject to change without notice.

Caution

1. Do not charge the cell outdoors and keep away from water.
2. Do not use this kit for other purposes except only for vaping.
3. Do not touch or spill the nicotine liquid.
4. Do not try to disassemble the battery or replace the Li cell therein.
5. Do not use Ni200 wire in power mode, Ni200 can be used in temperature control mode only.
6. Do not dispose battery to fire or use it in extreme temperature.
7. Do not use the e-cigarette while driving.
8. Do not swallow the e-liquid.
9. Do not vape while driving.

CLOCC replacing and juice filling

The atomizer unit is completely replaceable and designed with a period of life span. When flavor and/or vapor is reduced, it's time to change the atomizer. Follow the below diagram to replace the coil and fill up the tank.



Battery Function:

5 speedy clicks on the button to switch on/off the battery.

10. Do not look into the drip tip while pressing the fire button to prevent juice spitting into your eyes.
11. Do not use the electronic cigarette more frequently or for longer periods than conventional cigarettes. The electronic cigarette is not a smoking cessation device.
12. Suitable temperature range of using this kit is 5-45 degree C.
13. Keep all components away from children and pets.
14. Switch off the mod before you putting into your bag or pocket.
15. This product is designed for adults, not for child, women who are pregnant or person having disease or sick which may be affected by this product.
16. For people with adverse reaction after using this product, it is recommended to use juice with lower or no nicotine content.
17. This kit is only for vaping and does not used for other purposes.
18. Improper use of this product may take your own risk.
19. Kanger will not guarantee products that have been damaged through improper use or intentional damage.