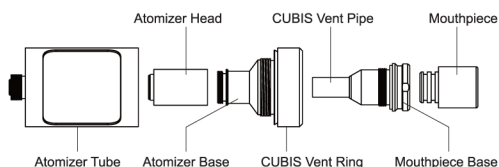




Manufactured by Joyetech
Email: info@joyetech.com
Web: www.joyetech.com



the CUBIS Atomizer User Manual



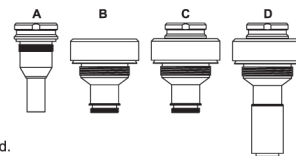
Notice for Use
Thank you for choosing Joyetech!
To ensure safe and proper usage, please read this manual carefully. If you require any additional information or have any questions regarding this product or its use, please consult your local Joyetech retailer, or visit our website at www.joyetech.com.

Product Introduction
CUBIS, adopts innovative and leak resistant cup design, whose coil replacement and juice fill

can be achieved by removing this top section from the cup. Airflow controls are also contained within the removable top tank assembly, meaning the possibility for leakage or coil flooding is greatly reduced. Compatible with most of power suppliers, it provides a perfect flavor and more precise vaping experience.

How to Assemble

1. Screw the CUBIS Vent Pipe onto the mouthpiece base along the clockwise. Now we have part A.
2. Screw the CUBIS Vent Ring onto the atomizer base along the clockwise. Now we have part B.
3. Screw the part A onto the part B. Now we have part C.
4. Screw the atomizer head onto the part C. Now we have part D.
5. Screw the atomizer tube and the mouthpiece onto the part D and the whole CUBIS is assembled.

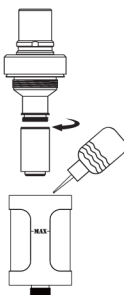


Atomizer Head:
1. BF SS316 can be applied to multiple modes, including power(VW), Bypass, VT-Ni, VT-Ti, SS316 and TCR modes.
2. BF Clapton 1.5ohm performs well even in low wattage condition.

Atomizer Head replacement:
Unscrew the atomizer tube, the atomizer head is located on the end of part B, just unscrew it and replace and clean.
(NOTE: Please do not wash the atomizer head with water. Simply scrub it with alcohol cotton or clean dry cloth.)

E-juice filling:
Separate the atomizer from the battery, and unscrew the atomizer base from the atomizer tube. Inject the liquid into the cambered slot.

NOTE:
1. Please don't overfill beyond the Max mark to avoid overflow when reassemble.
2. Please drip a few drops of e-juice to the atomizer head before its first use to avoid dry burn.



Cautions:
1. Only have your CUBIS atomizer repaired by Joyetech. Do NOT attempt to repair it on your own as it may lead to further damage to the item and/or personal injury.
2. CUBIS should be operated in dry conditions between temperatures of -10°C (14°F) to 60°C (140°F) and charged between 0°C (32°F) to 45°C (113°F).
3. CUBIS atomizer is designed with authentic Joyetech components. Applying CUBIS atomizer with unauthorized components may cause the device to function improperly and/or lead to damage.

Warranty
Please consult your Joyetech product warranty card. We are not responsible for any damages caused by human error. Our warranty is not available for products purchased from third party vendors.

Joyetech agrees to provide repair under warranty pursuant to the following terms and conditions:
1. This warranty provides repair free of charge for defective Joyetech brand merchandise. Warranty period is 90 days from date of purchase by the end user.

2. This warranty may be void as a result of any of the following conditions:

- * Customer does not provide warranty card and original receipt of purchase.
- * Merchandise failure or damage is caused due to improper use or unauthorized repair.
- * Merchandise failure or damage as a result of excessive force such as dropping.
- * Merchandise failure or damage as a result of usage outside of recommended operating conditions (see precautions in usage manual).
- * Merchandise failure or damage caused by improper use of water or other liquid (see usage manual for operating instructions).
- * Merchandise failure or damage due to usage with non-Joyetech components (charger, battery, and power cable).

3. This warranty does not cover personal items or consumable goods and attachments, including but not limited to: mouthpiece, cartridge, atomizer head, lanyard, and leather sheath.

4. This warranty does not cover any non-Joyetech brand products. This warranty is only valid for eligible Joyetech brand products during the warranty period of 90 days after date of purchase as indicated on proof of purchase.

Joyetech reserves the right of final decision in all warranty cases. Joyetech may interpret and revise the content of this warranty terms.