



USER MANUAL

iTaste Kroma Temperature Control Vaping System

Powerful, fast and extremely accurate: Welcome to the next level of vaping perfection with this Innokin iTaste Kroma Vaporizer powered by AETHON Temperature Control Technology.

For the best possible vaping experience please read, and follow, this user manual. The iTaste Kroma is powered by the Ultra-fast advanced AETHON chipset with 75W of pure power focused with ClearWave noise cancellation technology.

Choose your favorite Stainless Steel, Nickel200 or Titanium coils and get ready for an amazing vaping experience with no more dry hits! Pure Power, Total Control, Huge Clouds.

Get ready to experience vaping excellence with the Innokin iTaste Kroma!

Verify your iTaste Kroma is an authentic Innokin Technology vaporizer:

- 1) Locate the label on the packaging and scratch the silver to reveal your iTaste Kroma Unique Authorization number.
- 2) Visit: <http://www.innokin.com/verify-device/>
- 3) Enter the Unique Authentication number in the Authentication field.
- 4) Verify your iTaste Kroma is a genuine Innokin Vaporizer.

If you have any questions or suggestions, please write to us at support@innokin.com. Join our social media channels for the latest Innokin information and great contests!

Innokin Facebook Page: <https://www.facebook.com/InnokinTechnology>
 Innokin Instagram: <https://www.instagram.com/innokintechnology>
 Innokin Subreddit: <https://www.reddit.com/r/innokin>
 Innokin Twitter: <https://www.twitter.com/innokitech>

WARRANTY INFORMATION:

Innokin Technology provides a 90 day after sales service warranty to all authorized vendors. Please consult the official Innokin website (www.innokin.com) or your Authorized Innokin Technology Vendor for more information and terms of service. The proof of purchase is needed for the 90 Day Limited Warranty.

For more information and to download the warranty card please visit: <http://www.innokin.com/innokin-90-day-limited-warranty-program/>

SAFETY GUIDELINES AND WARNING:

Please read this section carefully to ensure you receive maximum benefits from your iTaste Kroma and enjoy vaping with it in the most safe and effective ways possible.

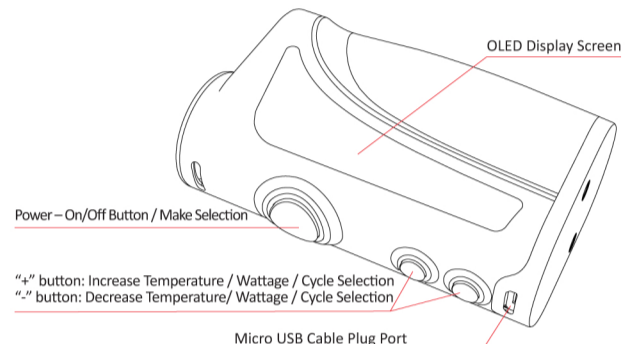
1. This Advanced Personal Vaporizer may be used with e-liquids that contain nicotine. If questions or concerns regarding your e-liquid arise, please check with your e-liquid provider. This product is only intended for use by adults of legal smoking age (18+) and should not be used by children, women who are pregnant or breastfeeding, or persons with or at risk of heart disease, high blood pressure, diabetes or taking medicine for depression or asthma, or who otherwise may be sensitive to nicotine. Nicotine is addictive and habit forming, and can be toxic by inhalation, in contact with the skin or eyes, or if swallowed. Ingestion of the non-vaporized concentrated e-liquid ingredients can be poisonous. Keep away from children and pets.

2. This Advanced Personal Vaporizer may be used with e-liquids that contain nicotine, a chemical known to the State of California to cause birth defects or other reproductive harm.
3. This Advanced Personal Vaporizer has not been evaluated by the Food and Drug Administration and is not intended to treat, mitigate, prevent or cure any disease or condition. This product is not intended for use as a smoking cessation device.
4. This Advanced Personal Vaporizer is only designed to be used with high quality e-liquid. Please check with your e-liquid provider. This device is not intended for use with loose tobacco leaf or herbal substances.
5. The atomizer /tank must be stored out of the reach of children and pets. All empty atomizers must also be disposed of properly and out of the reach of children and pets.
6. This Advanced Personal Vaporizer includes small parts such as the mouth piece. Always keep any small parts out of reach of children and pets to prevent swallowing or other harm.

7. Do not misuse, mishandle or store your iTaste Kroma Advanced Personal Vaporizer improperly. Even though it is made of high quality stainless steel it may become damaged when dropped or otherwise mishandled.
8. Do not attempt to repair the unit by yourself as damage or personal injury may occur.
9. In order to guarantee the normal functioning of your iTaste Kroma Advanced Personal Vaporizer, and maximize your vaping pleasure, do not allow the battery power level to drop below 2 bars. When the battery power level drops to 1 bar the device should be charged immediately to maintain the lifespan of your iTaste Kroma. Innokin is not responsible for battery damage caused by allowing the device to discharge completely.
10. In order to prolong the operation of your iTaste Kroma Advanced Personal Vaporizer, please do not place or store iTaste Kroma in excessively hot or cold environments.
11. Your iTaste Kroma Advanced Personal Vaporizer is not waterproof. Keep it dry at all times.

12. Obey local laws or regulations regarding Electronic Cigarettes when vaping. If you are in an area where there are any bans or potential dangers, please do not use your iTaste Kroma Advanced Personal Vaporizer.
13. Do not allow any liquids or ejuice to enter the device through the top threading or the USB ports. If any liquids enter the device, or come into contact with the PCB, please discontinue using or charging the device and contact your local Authorized Innokin Vendor immediately.
14. Innokin is not responsible for any atomizer or battery damage due to the use of low quality eLiquid, dry herb, or other materials for which the iTaste Kroma Advanced Personal Vaporizer was not designed.
15. Innokin is not responsible for battery and charger explosions, or malfunctions, due to the use of a low-quality charger. Only use the original iTaste Kroma Advanced Personal Vaporizer starter kit microUSB cable to charge the device. We recommend that you use a high quality 5V 2A USB wall charger (CE/UL Certified)

16. The iTaste Kroma Advanced Personal Vaporizer is not designed for use with a car charger. It does not come included with a car charger.



OPERATION GUIDE:

The iTaste Kroma has three buttons: "ϕ" Power button, "+" button and "-" button.
 "ϕ" Button: Power - On/Off Button / Make Selection
 "+" Button: Increase Temperature / Wattage / Cycle Selection
 "-" Button: Decrease Temperature / Wattage / Cycle Selection

The large OLED screen displays all important information.

To POWER ON the iTaste Kroma:



ON/OFF Power Button:

Click the power button "ϕ" three times quickly to power on the iTaste Kroma. The main LED light will blink from red to yellow to green, after which the iTaste Kroma will enter standby mode. The final color of the LED will indicate the current battery power level.

The iTaste Kroma battery capacity is displayed via green, yellow and red LED

Green = Almost fully Charged.
 Yellow = Half Power.
 Red = Low Power. Charge the iTaste Kroma.

When the iTaste Kroma has been powered on Hold the "ϕ" button down to activate the unit. The color of the LED when the button is pressed indicates the current power level.



When the iTaste Kroma is fully recharged the LED light will power off.

5V/2A Fast Charging Supported with high quality, certified CE/UL/FCC wall charger.

To POWER OFF the iTaste Kroma:

When the iTaste Kroma is not in use, click the power button "ϕ" three times to power off the iTaste Kroma.

IMPORTANT:

Always power off the iTaste Kroma when it is not being used, or when it is going to be stored in a pocket, bag or purse.

'Vape while charging' Technology:

The iTaste Kroma is recharged with a Micro USB cable. When plugged into a suitable power source the iTaste Kroma can be vaped and charged at the same time with Innokin Technology's 'Vape while charging' pass-through technology.

IMPORTANT:

If the battery is totally discharged it must be recharged to at least 1 bar before vaping with 'Vape while charging' pass-through technology. Ensure the battery power level has at least 1 bar remaining before using the vape while charging function.

READY TO VAPE!

Check that the iTaste Kroma battery is charged and functioning properly.

Attach an atomizer. Ensure that the atomizer is filled with eliquid and attached correctly. There must be eliquid in the tank before you power on & activate the device. Do not dry burn the coil. Always Prime new Coils before vaping. Always check & confirm the material and range of the attached coil.

Power on the iTaste Kroma by pressing the "ϕ" Power button 3x. The screen will display the last selected settings.

Click the "ϕ" Power button once to bring up the Coil Selection screen:

COIL MODE SELECTION SCREEN

<SAME> - Same coil with previous settings
 <Ni> - Ni200 - Nickel Coil
 <Ti> - Titanium
 <SS> - Stainless Steel 316L
 <W> - Wattage



Press the power button "ϕ" to select the correct coil type.

The iTaste Kroma will only use Temperature Control with Ni200, Titanium, Stainless Steel 316 coils or use Wattage; it will not fire both. You must choose either Temperature Control or Variable Wattage.

IMPORTANT:

You must select the correct coil type. Set the iTaste Kroma Temperature or wattage according to the attached coil's recommended range.

Do not set the temperature higher than recommended or you may damage the coil. If the coil is damaged, or tastes burnt, replace the coil immediately.

The ideal temperature or wattage varies according to coil, eliquid, tank airflow and personal preference. Start at the low end of the recommended coil temperature or wattage range and increase the set temperature or wattage until you find your perfect vape temperature and flavor.

You must select the correct coil mode before vaping.

CALIBRATION AND COIL SELECTION

IMPORTANT:
 UNPLUG THE DEVICE BEFORE CALIBRATING.
 THE COIL MUST BE AT ROOM TEMPERATURE FOR ACCURATE CALIBRATION.
 CALIBRATING THE DEVICE AFTER FIRING IS NOT ADVISABLE AS THIS MAY LEAD TO INACCURATE READINGS.

IMPORTANT:
 For accurate calibration the coil must be at room temperature. If a coil has been heated then it must be cooled down to room temperature before calibration. Eliquids should be room temperature for accurate calibration, if an eliquid is cold then it must be warmed to room temperature before calibration.

There are two ways to select the correct coil mode:

CALIBRATION & Coil Selection Method #1:

Press the power button "ϕ" to select a tank. When the power button "ϕ" is attached the OLED screen will display:



Press the "+" or "-" button to cycle coil types through Ni (Ni200), Ti (Titanium), SS (Stainless Steel), W (Wattage Mode).
 When the desired mode is selected press the button "ϕ" to select Coil Type and activate the iTaste Kroma.
 YOU MUST select the correct coil mode before vaping.

Coil Selection Method #2:

Press and hold the power button "ϕ" and the "+" button together for 3 seconds; continue holding the buttons to cycle through coil types: Ni (Ni200), Ti (Titanium), SS (Stainless Steel), W (Wattage Mode). The top left corner will display the coil type. Release the buttons to select the correct coil type.

To adjust the set temperature and switch between Fahrenheit °F and Celsius °C: Celsius Temperature Range can be adjusted from between 150-315°C in 5°C increments. Hold the "+" or "-" button and the temperature setting will flash. Release the button and press it again to quickly increase or decrease the set Celsius Temperature.

When the °C temperature is cycled above 315°C, or below 150°C then the device will switch to °F temperature mode.

Press the "ϕ" button to lock the set temperature and activate the iTaste Kroma. The Fahrenheit Temperature Range can be adjusted from 300-600°F in 5°F increments. Hold the "+" or "-" button and the temperature setting will flash. Release the button and press it again to quickly increase or decrease the set Fahrenheit temperature.

When the °F setting is increased above 600°F decreased below 300°F the device will switch to °C mode.

Press the "ϕ" button to lock the set temperature and activate the iTaste Kroma.

Dry Hit Detection & Prevention:

If there is insufficient eliquid in the coil, or if the coil is not primed, the iTaste Kroma output will drop to a low wattage temperature maintenance mode.

THIS IS VERY IMPORTANT. YOU MUST READ THIS BEFORE VAPING.

Temperature Control Functions are only available with T.C. compatible coils.

Ni Mode: Nickel (Ni200) coils only!

You MUST choose the Ni mode when using a Ni200 coil in the tank. Some individuals may be allergic to Nickel (Ni200); ensure that you are able to vape Nickel (Ni200) before using Ni200 coils.

If you feel unwell after vaping, seek full medical advice immediately.

Ti Mode: Titanium coils only.

You MUST choose the Ti mode when using a Titanium coil in the tank.

Stainless Steel TC mode: 316L SS coils are recommended.

You MUST choose the SS mode when using a Stainless Steel 316L coil in the tank.

W Mode: Non Temperature Control coils.

Adjust Variable Wattage:

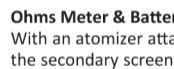
When the iTaste Kroma is in variable wattage mode press and hold the "+" or "-" button and the set wattage will flash. Release the button and press the "+" or "-" button again to increase or decrease the wattage.

The iTaste Kroma wattage can be adjusted from 6.0 to 75 watts in .5 watt increments by pressing and holding the "+" or "-" button. Hold the button down to quickly increase or decrease the set wattage.

If the wattage is decreased below 6 Watts it will cycle up to 75 Watts. If the wattage is increased above 75 Watts it will cycle down to 6 watts. Press the button "ϕ" to lock the set wattage and activate the iTaste Kroma.

Ohms Meter & Battery Level Indicator & Puff Counter:

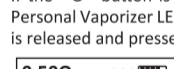
With an atomizer attached, hold both the "+" and "-" buttons simultaneously and the secondary screen will display the precise resistance of the attached atomizer, the battery voltage and the number of puffs since the device was last turned off.



INTEGRATED SAFETY:

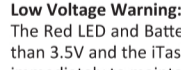
15 second cutoff:

If the "ϕ" button is held for 15 seconds or longer the iTaste Kroma Advanced Personal Vaporizer LED will flash 10 times and then stop firing until the "ϕ" button is released and pressed again.



Low Voltage Warning:

The Red LED and Battery bar will blink 8 times when the battery capacity is lower than 3.5V and the iTaste Kroma will automatically power off. Recharge the device immediately to maintain battery health.



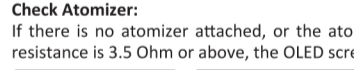
Short Circuit/Atomizer Protection:

Short Circuit/Atomizer Protection protects the iTaste Kroma Advanced Personal Vaporizer against shorted atomizers and will stop the unit from functioning in unsafe conditions.

The iTaste Kroma features automatic real-time atomizer Ohms detection. If the resistance of the atomizer is lower than 0.07Ω, the LED will light solidly for 5 seconds, the Ohms bar will blink and the iTaste Kroma will not power on.

Check Atomizer:

If there is no atomizer attached, or the atomizer is not connected properly, or resistance is 3.5 Ohm or above, the OLED screen will display: "CHECK ATOMIZER".



Over-Discharge Protection:

The iTaste Kroma Advanced Personal Vaporizer monitors battery voltage and will automatically power off if the battery is over-discharged.

Overheat Protection:

The iTaste Kroma features automatic real-time PCB Chipset temperature detection. The screen will display "TOO HOT" if the PCB is overheated.



OLED SCREEN ORIENTATION:

Hold "+" and "-" button for 3 seconds to flip the horizontal orientation of the OLED screen.

Remember last Temperature or Wattage setting:

When the iTaste Kroma is turned off it will remember the current Temperature or wattage setting and it will retain the setting when the iTaste Kroma is powered back on.

IMPORTANT Charging Information:

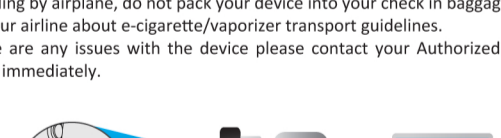
Never charge a battery that has been damaged or dropped. Never plug a charger into a non-approved mains power transformer. Do not overcharge. Remove the battery from the charger when charging is complete. Never leave a charging battery unattended.

Only use the included high quality charging cable. Wall Adapters should be CE/UL/FCC certified, high quality and authentic.

Do not charge your vaporizer with your car.

If traveling by airplane, do not pack your device into your check in baggage. Speak with your airline about e-cigarette/vaporizer transport guidelines.

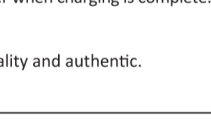
If there are any issues with the device please contact your authorized Innokin vendor immediately.



How to refill the Silpstream Tank

Refill with Tank:

- 1) Push the top cap down and turn to open the tank.
- 2) Add eLiquid against the inside wall of the tank. Do not overfill the Max. indicator line.
- 3) Firmly replace the top cap. Do not over-tighten.



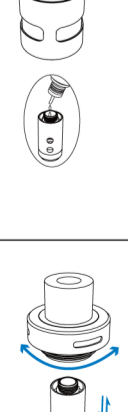
IMPORTANT:

Do not add eLiquid to the center airflow hole.

Please wait 5 minutes before vaping.

Replacing the coil:

- 1) Push the top cap down to activate the Child Proof Cap and turn counter-clockwise to open.
- 2) Carefully remove the coil and safely dispose of used coils away from children & pets.
- 3) Wash hands after any contact with eliquid.
- 4) Attach and tighten a new Silpstream coil.
- 5) Safely & firmly tighten the top cap.



WHEN IS IT TIME TO CHANGE THE CLEAROMIZER COIL?

All coils will need to be replaced after a certain amount of use. The time between coil replacements will vary according to the eLiquid used and personal vaping habits. You will know when the atomizer coil should be replaced when your vaporing experience shows less performance and taste from your clearomizer.

When a new clearomizer coil is used, large vapor clouds and robust flavors will be produced from your e-liquid. The first sign that your coil needs to be replaced is that there will be less vapor production.

The second indication that the atomizer coil needs to be replaced is that flavors will become less tasty, and may begin to have a burnt taste. This burnt taste will become more and more apparent as the coil continues to wear out.

We recommend that you change the coil at the very first sign of burnt taste and decreased clouds.

Product Features:

Operating Temperature Range: 150-315 °C 5°C increments
 300-600 °F 5°F increments

Operating Wattage Range: 6.0 - 75W .5 watt increments
 Precision Temperature Control

Direct Current - Steady Power Output
 Balanced Even Coil Heat-Up

Ultra-low External Heat Generation
 Dry Hit Detection & Prevention

Ultra Low Standby Power Consumption

Technical Specifications

Battery: 2000mAh
 Maximum output Wattage: 75W
 Maximum output Current: 35.5A
 Maximum working Current: 27.5A
 Maximum output Voltage: 7.5V

Atomizer Resistance: 0.1Ω (Minimum)

Temperature Control Mode: Ni (0.1-0.2 Ω), Ti (0.1-0.5 Ω)

Stainless Steel 316L (0.2-1.0 Ω) coils are recommended.

Important: Temperature Control is only available with T.C. compatible coils.