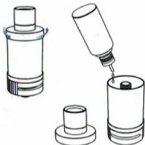




QUICK START GUIDE

Refill with eLiquid:

- Open the top cap.
- Carefully add eLiquid.
- Do not overfill.
- Close the top cap.



IMPORTANT:

Prime Coils by adding
- 5 drops of eLiquid into the
center screen.

Wait 1 min before vaping.



Replace the iSub Coil:

1. Unscrew the bottom Metal cap of the iSub V.
2. Hold the coil and gently pull to remove.

Important:

3. Align the flat sides of the new Coil.
4. Push to insert new Coil firmly into Tank.
5. Carefully and firmly tighten the Metal Cap.



WARNING

- This Product has not been evaluated by the Food and Drug Administration and is not intended to treat, mitigate, prevent or cure any disease or condition.
- This product is not intended for use as a smoking cessation device. This product is only intended for use by adults of legal smoking age (18+).
- This Product may be used with e-liquids that contain nicotine and should not be used by children, women who are pregnant or breastfeeding, or persons with or at risk of heart disease, high blood pressure, diabetes or taking medicine for depression or asthma, or who otherwise may be sensitive to nicotine.
- This Product includes small parts such as the mouth piece. Always keep any small parts out of reach of children and pets to prevent swallowing or other harm.