



ENDURA T20 USER MANUAL

Endura T20 Complete Vaping System

Read all of this information user manual carefully before you start using this product because it contains important information for you.

The Endura T20 electronic cigarette is intended for adult smokers. The product is not recommended for non-smokers, young people under the age of 18 years, pregnant or breast feeding women and those experiencing general ill health.

Verify your Endura T20 is an authentic Innokin Technology product:

- 1) Locate the label on the packaging and scratch the silver stripe to reveal your Innokin Endura T20 Unique Authorization number.
- 2) Visit: <http://www.innokin.com/verify-device/>
- 3) Enter the Unique Authentication number in the Authentication field.
- 4) Verify your Innokin Endura T20 is a genuine Innokin product.

If you have any questions or suggestions, please write to us at support@innokin.com.

Join our social media channels for the latest Innokin information and great contests.

Innokin Facebook Page: <https://www.facebook.com/Innokin.Technology>

InnokinInstagram: <https://www.instagram.com/innokintechnology>

InnokinSubreddit: <https://www.reddit.com/r/innokin>

Innokin Twitter: <https://www.twitter.com/innokintech>

WARRANTY INFORMATION:

Innokin Technology provides a 90 day after sales service warranty to all authorized vendors. Please consult the official.

Innokin website (www.innokin.com) or your Authorized Innokin Vendor for more information and terms of service.

Keep the proof of purchase of this device.

The proof of purchase is needed for the 90 Day Limited Warranty. Read the Safety Guidelines and Warnings on the following pages.

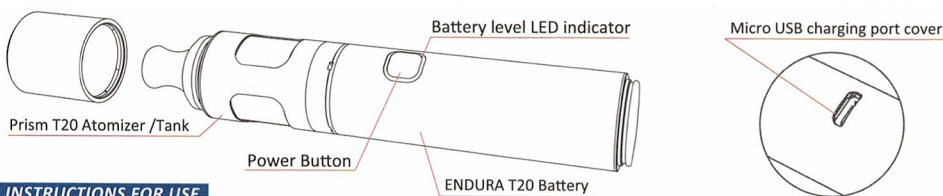
For more information and to download the warranty card please visit:

<http://www.innokin.com/innokin-90-day-limited-warranty-program/>

SAFETY GUIDELINES AND WARNING:

Please read this section carefully to ensure you receive maximum benefits from your Endura T20 and enjoy vaping with it in the most safe and effective ways possible.

1. This product is intended for use by adults of legal smoking age (18+ or higher). This product is not recommended for non-smokers, young people under the age of 18 years, pregnant or breast feeding women and those experiencing general ill health.
2. This product may be used with e-liquids that contain nicotine, a chemical known to the State of California to cause birth defects or other reproductive harm. Please check with your e-liquid provider.
3. This product is only designed to be used with high quality e-liquid. It is not intended for use with loose tobacco leaf or herbal substances. Innokin is not responsible for any atomizer or battery damage due to the use of low quality e-liquid, dry herb, or other materials for which this product was not designed.
4. This product is not intended to treat, mitigate, prevent or cure any disease or condition. It is not intended for use as a smoking cessation device.
5. Always keep this product out of reach of children and pets.
6. Do not misuse, mishandle or store this product improperly. In order to prolong the operation of this product, please do not use, place or store it in excessively hot or cold environments.
7. Do not attempt to repair the product by yourself as damage or personal injury may occur.
8. This product is not waterproof. Keep it dry at all times.
9. Do not allow any liquids or e-juice to enter the device through the top threading or the USB ports. If any liquids enter the device, or come into contact with the PCB, please discontinue using or charging the device and contact your local Authorized Innokin Vendor immediately.
10. Innokin is not responsible for battery and charger explosions, or malfunctions, due to the use of a low-quality charger. Only use the original micro USB cable to charge the device. We recommend that you use a high quality 5V/1A USB wall charger (CE/UL Certified).
11. This product is not designed for use with a car charger. This product does not come included with a car charger.
12. Obey local laws or regulations regarding Electronic Cigarettes when vaping. If you are in an area where there are any bans or potential dangers, please do not use this product.



INSTRUCTIONS FOR USE

Step 1: Fill the tank with e-liquid. Wait five minutes before vaping.

Step 2: Click the button three times to power on the device.

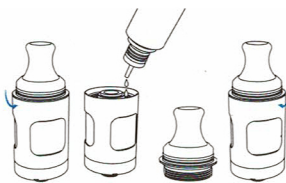
Step 3: Hold the button to activate the device and vape.

IMPORTANT:

Make sure there is e-liquid in the atomizer/tank and the coil is properly primed before powering on the device. Always power off the Endura T20 electronic cigarette when it is not being used, or when it is going to be stored.

How to refill the Prism T20 Atomizer/Tank:

- 1) Hold top cap and unscrew it from the tank.
- 2) Add e-liquid against the inside wall of the tank.
- 3) Carefully screw the top cap back on to the tank.



IMPORTANT:

Add e-liquid using a refill container with a nozzle's width less than 2.5 millimetres. Do not add e-liquid to the central airflow hole. Do not over-tighten. After refill please wait 5 minutes before vaping.

E-liquid CAUTION:

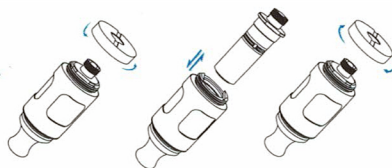
Take care when filling the tank and do not overfill. In case of e-liquid contact with skin, wash immediately and thoroughly with soap and water. In case of e-liquid contact with eyes, rinse immediately and thoroughly with water and seek full medical advice.

How to replace a coil

CAUTION:

Make sure there is no e-liquid in the tank before you pull out the coil.

- 1) Hold the tank with the threading up.
- 2) Unscrew the bottom metal cap of the tank
- 3) Hold the coil and gently pull to remove.
- 4) Carefully and safely dispose of the used coil. Keep away from children and pets.
- 5) Properly align the flat sides of the new coil.
- 6) Push to fully insert the new coil firmly into tank.
- 7) Ensure that the coil is completely inserted.
- 8) Carefully and firmly tighten the bottom cap.



How to charge the Endura T20 battery.

To charge your Endura T20 battery, connect a properly powered MicroUSB cable to the 'input' port on the Endura T20 Micro USB port.

When Charging or Using the device:

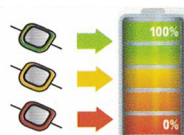
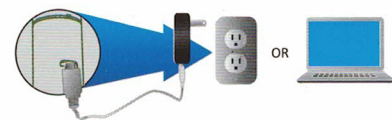
The Endura T20 battery level status is displayed via green, yellow and red LED.

Green = Almost fully Charged.

When the Endura T20 battery is fully recharged the LED light will power off.

Yellow = about half Power.

Red = Low Power. Please Charge the Endura T20 battery.



IMPORTANT Charging Information:

Only charge this product with a high quality CE/UL Certified 5V/1A wall charger.

- Never charge a battery that has been damaged or dropped.
- Never plug a charger into a non-approved mains power transformer.
- Do not overcharge. Remove the battery from the charger when charging is complete.
- Never leave a charging battery unattended.
- Only use the included high quality charging cable.
- Wall Adapters should be CE / UL / FCC certified, high quality and authentic.
- Do not charge your vaporizer with your car.
- If traveling by airplane, do not pack your device into your check in baggage. Speak with your airline about e-cigarette/vaporizer transport guidelines.
- If there are any issues with the device please contact your Authorized Innokin vendor immediately.

SAFETY:

15 Second Cutoff:

If the button is held for 15 seconds or longer the Endura T20 electronic cigarette LED lights will flash and then stop firing until the button is released and pressed again.

Low Voltage Warning

The Red LED will blink for eight times when the battery capacity is lower than 3.3V and the Endura T20 electronic cigarette will automatically power off.

Short Circuit/Atomizer Protection:

Short Circuit/Atomizer Protection protects the Endura T20 electronic cigarette against shorted atomizers and will stop the unit from functioning in unsafe conditions.

The Endura T20 electronic cigarette features automatic real-time atomizer Ohms detection. If the resistance of the atomizer is lower than 1.2 ohm, the LED will stay on 5 seconds and the Endura T20 electronic cigarette will not power on.

Over-Discharge Protection:

The Endura T20 electronic cigarette monitors the battery voltage and will automatically power off when the battery over discharged.

Over-charge Protection:

Charging voltage 4.5~6.0V, charging current 500mA.

Overheat Protection:

The red LED will blink 3 times if the PCB is overheated.

'Vape while charging' Technology

The Endura T20 electronic cigarette is recharged with a Micro USB cable. When plugged into a power source the Endura T20 electronic cigarette can also be vaped and charged at the same time with Innokin Technology's 'Vape

TECHNICAL SPECIFICATIONS:

Battery: 1000 mAh/1500 mAh
Maximum Output Voltage: 13W
Maximum Output Voltage: 4.5V
Resistance: 1.5 ohm

Standby Current: 100 uA max
Maximum Output Current: 3.5A
Resistance: 1.2ohm-3.5ohm
Charging: Micro USB DC 5V/1A

