



MADE IN CHINA
Manufactured by Eleaf®

Manufacturer: Shenzhen Eleaf Electronics Co., Ltd.
Address: Area B, 1-2F, B-28, Heyi Beifang Tech Industrial Park,
Shajing Town, Baoan District, Shenzhen, China.

Email: info@eleafworld.com
Web: www.eleafworld.com



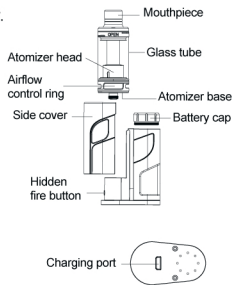
KONN
User Manual

Notice for Use

Thank you for choosing Eleaf products! Please read this manual carefully before use so as to use correctly. If you require additional information or have questions about the product or its use, please consult your local agents, or visit our website at www.eleafworld.com.

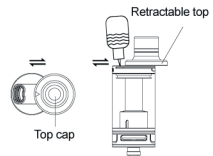
Product Introduction

The iKonn Total is a new innovative recessed tank style setup with hidden button design, offering easy operation and excellent performance in a simple, compact and stylish package. It comes with a new design of sliding cover that not only cleverly reveals e-liquid consumption but also protects the tank inside. Powered by single 18650 battery, it allows you to carry spare batteries when on the go. With 22mm diameter, retractable top fill method and new HW series coils, the ELLO mini XL/ELLO mini atomizer pairs perfectly with the iKonn Total.



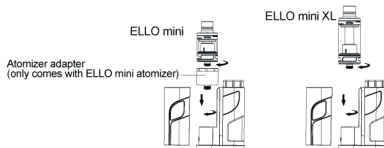
Assembling:

1. Drip a few drops of e-liquid directly into the atomizer head to make the coil(s) inside fully saturated before first use;
2. Screw the primed atomizer head onto the atomizer base tightly;
3. Put the glass tube on, and screw the top cap with mouthpiece on;
4. Slide the mouthpiece back to reveal the fill port, and then close the retractable top after filling.
5. The airflow can be adjusted by rotating the airflow control ring on the atomizer base;
6. Finally the ELLO mini XL/ELLO mini is ready for use.
7. Remove the side cover of iKonn Total by sliding it up, screw the prepared ELLO mini with atomizer adapter or ELLO mini XL onto the iKonn Total and finally put the cover back.



Note:

1. If you are using the ELLO mini with the iKonn Total, please first screw the ELLO mini atomizer onto the atomizer adapter and then screw them together onto the iKonn Total.
2. Before refilling, if the ELLO mini sits in the iKonn Total in a position where the top part cannot be slid back to refill, you will need to first turn clockwise the ELLO mini to the position where the retractable top can be slid back; if you are using the ELLO mini XL with the iKonn Total, you may need to first unscrew counterclockwise the ELLO mini XL a little up to the position where the retractable top can be slid back to refill.



Power on/off:

Unscrew the battery cap, insert one high-rate 18650 battery in (negative pole up and positive pole down) and screw the battery cap back. The device can be powered on or off by pressing the fire button 5 times in quick succession within two seconds, and the indicator light will flash 5 times.

Note:

1. Please be careful not to use battery with torn casing as it is a safety hazard.
2. Please make sure you are using a high-rate 18650 battery whose continuous discharge current should be above 25A.

Vaping:

Keep holding the fire button to take a puff when the device is powered on.

Charging:

Simply charge your 18650 battery with an external charger or charge it in the device by connecting the device with a 1A wall adapter or computer via the USB cable. The indicator light is red during charging and goes out when fully charged. It is recommended to charge the battery with external charger.

Properties and Protections:

Atomizer Protection: Every time when vaping time exceeds 15 seconds, the indicator light flashes 10 times and the output cuts off automatically.

Short Circuit Protection: If short circuit occurs before vaping, the indicator light will flash 5 times and the output cuts off automatically when you start to vape; if short circuit occurs during vaping, the indicator light will flash 3 times.

Low Voltage Protection: When the voltage of the device is lower than 3.3V, the indicator light flashes 40 times and there is no output when vaping. Charge the device to reactivate it.

Resistance Detect: If the output load resistance is higher than 3.0ohm, the indicator light will flash slowly to indicate that no atomizer is detected when vaping; if the output load resistance is lower than 0.15ohm, the indicator light will flash 5 times to indicate a low output load or a short circuit when vaping.

Battery Level Indication Function: The indicator light will stay lit or flash slowly after a puff when the battery level is high. On the contrary, the light will flash in frequency.

Battery level	Light Condition
60-100%	Stay lit
30-59%	Slowly flashes
10-29%	Moderately flashes
0-9%	Flashes in frequency

Warranty

We are not responsible for any damages caused by human error. Legal warranty is applied.

Warnings

1. Please keep out of reach of children.
2. This product is not recommended for use by young people, non-smokers, pregnant or breast-feeding women, or persons who are allergic/sensitive to nicotine.

Contra-indication

1. Do not attempt to repair the product by yourself as damage or personal injury may occur.
2. Do not leave the product in high temperature or damp conditions, otherwise it may be damaged.
3. Do not use this product for other purposes except only for vaping and don't swallow the e-liquid.

Possible Adverse Effects

1. This product may be hazardous to health and contains nicotine which is addictive.
2. For people with adverse reaction after using this product, it is recommended to use the e-liquid with lower nicotine content or no nicotine.