



Email: info@ismoka.com
Web: www.eleafworld.com



MADE IN CHINA
Manufactured by iSmoka



iJust start User Manual

Notice for Use

Thank you for choosing Eleaf products! Please read this manual carefully before use so as to use correctly. If you require additional information or have questions about the product or its use, please consult your local agents, or visit our website at www.eleaf-world.com.

Product Introduction

Inheriting the simple design of iJust series e-cigarette kits, the new iJust start mainly features its direct output voltage, side charging port and adjustable air inflow. In addition to two specifications for you to choose from: 1300mAh for iJust start and 1600mAh for iJust start Plus, the iJust start also comes with various attractive colors for your options.

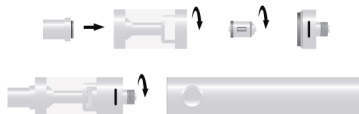


1 | iJust start | English

Quick Start

1) Assembling:

1. First screw the atomizer head onto the atomizer base tightly;
2. Then put together atomizer base, atomizer tube and mouthpiece;
3. Finally screw the GS Air 2 atomizer onto the iJust start battery.



2) E-liquid Filling:

1. First unscrew the atomizer base off the atomizer;
2. Then slowly fill the e-liquid into the atomizer along the tube;
3. Finally screw the atomizer base onto the atomizer again.

3) Air Inflow Adjustment:

The amount of air inflow can be easily adjusted by rotating the silicone airflow control ring so as to get different vaping experiences.

4) Power on/off:

Press the button five times in quick succession within two seconds, the white button light will flash five times to show the device is ready for use. In the same way, the device can also be turned off.

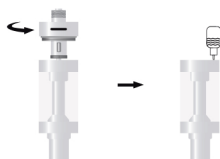
5) Vaping: Long press the button to take a puff.

6) Charging:

Charge the device by connecting it with wall adapter or computer via the USB cable. The button light will turn red when the device is charging and the light will go out when fully charged.

For the iJust start (1300mAh), it will take about 3 hours to get a full charge via 1A wall adapter. For the iJust start Plus (1600mAh), it will take about 4 hours to get a full charge via 1A wall adapter.

English | iJust start | 2



Note:

- Please do not overfill and make sure the liquid level is between 10%-90%;
- Please first drip a few drops of e-liquid directly into the wick so as to make the atomizer head fully saturated before vaping.

3 | iJust start | English

English | iJust start | 4

Properties

Atomizer Protection: When vaping time exceeds fifteen seconds, the device will shut off automatically with the white button light flashing ten times.

No Atomizer Protection: The white button light will flash slowly when the button is pressed down without atomizer connected.

Short-circuit Protection: Short-circuit occurs with the white button light flashing three times.

Low-voltage Protection: When the voltage of device is below 3.3V, the white button light will flash 40 times. Charge the device to power it on.

Battery Level Indication Function: The white light will stay lit or flash slowly after a puff when the battery level is high. On the contrary, the light will flash in frequency.

Battery Level	Light Condition
60%-100%	Stay lit
30%-59%	Slowly flashes
10%-29%	Moderately flashes
0-9%	Flashes in frequency

5 | iJust start | English

Precautions

1. Only have your iJust start repaired by Eleaf. Do not attempt to repair the unit by yourself as damage or personal injury may occur.
2. Do not leave the iJust start in high temperatures or damp conditions, otherwise it may be damaged. The appropriate operation temperature is within 0°C to 45°C while charging and -10°C to 60°C while using.
3. Do not attempt to combine the iJust start with parts from other brands of e-cigarettes. If it is damaged in this way, our company will not take on responsibility and your warranty will be void.

Warranty

We are not responsible for any damages caused by human error. Legal warranty is applied.

English | iJust start | 6