



Manufacturer: Shenzhen Eleaf Electronics Co., Ltd.  
Address: Area B, 1-2F, B-28, Heyi Beifang Tech Industrial Park,  
Shajing Town, Baoan District, Shenzhen, China.  
Email: info@eleafworld.com  
Web: www.eleafworld.com



iCare™ Mini  
User Manual

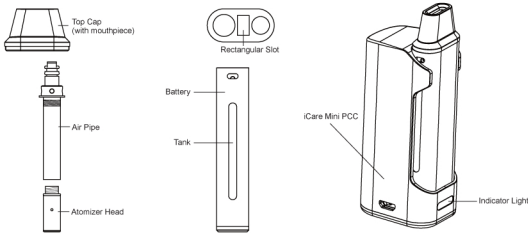
Notice for Use

Thank you for choosing Eleaf products! Please read this manual carefully before use so as to use correctly. If you require additional information or have questions about the product or its use, please consult your local agents, or visit our website at [www.eleafworld.com](http://www.eleafworld.com).

Product Introduction

iCare Mini is much tinier and cuter than original iCare while still retains the adoption of automatic battery that applies the air pressure sensor for easy use. With LEDs in three different colors, you can easily check the battery level by a simple glance at the light. In addition, it comes with an iCare Mini PCC of 2300mAh battery capacity to charge it.

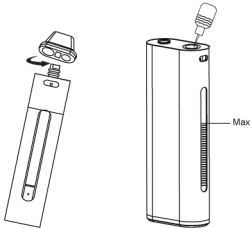
How to Use?



How to Use iCare Mini?

Assembling:

1. Pull out the top cap, and then take the air pipe out by inserting it into the rectangular slot on the top cap and rotating it counterclockwise.
2. Slowly fill e-juice into the tank. (Note: please don't fill beyond the Max line to avoid overflow.)



3. Drip 2 or 3 drops of e-juice directly into the coil before first use, and screw the atomizer head on the air pipe tightly.
4. The airflow can be adjusted by rotating the airflow control ring on the air pipe.
5. Insert the air pipe with atomizer head into the tank again and tighten it with the help of the rectangular slot on the top cap.
6. Finally put the top cap on, and the iCare Mini is ready to use.

Vaping:

Take a puff directly. When vaping, the indicator light stays lit. When the battery level is between 100%-16%, the indicator light is green; when the battery level is between 15%-6%, the indicator light is yellow; when the battery level is no higher than 5%, the indicator light is red.

Charging:

Insert the iCare Mini into the iCare Mini PCC to get a charge or charge the iCare Mini through the charging port via a wall adapter or a computer with a USB cable. The indicator light is red while charging and goes out when fully charged.

Properties and Protections:

**Atomizer Protection:** Every time when vaping time exceeds 10 seconds,

the indicator light flashes 10 times and the output cuts off automatically.  
**Short Circuit Protection:** If short circuit occurs before vaping, the indicator light will flash 5 times and the output cuts off automatically when you start to vape; if short circuit occurs during vaping, the indicator light will flash 3 times.  
**Low Voltage Protection:** When the voltage of the device is lower than 3.3V, the red indicator light flashes 20 times and there is no output when vaping. Charge the device to reactivate it.  
**Resistance Detect:** If the output load resistance is higher than 3.5ohm, the indicator light will flash slowly to indicate that no atomizer is detected when vaping; if the output load resistance is lower than 1.0ohm, the indicator light will flash 5 times to indicate a low output load or a short circuit when vaping.  
**Output Voltage:** When the voltage of the device is no lower than 3.7V, the output voltage is constant 3.7V; when the voltage of the device is lower than 3.7V, the output voltage changes according to the battery level.

How to Use iCare Mini PCC?

Charging:

Charge the iCare Mini PCC by connecting it with 1A wall adapter or computer via a USB cable. The indicator light turns red while charging and goes out when fully charged.

Protection and Function:

**Low Voltage Protection:** When the voltage of the iCare Mini PCC is lower than 3.0V, the indicator light flashes 40 times and the PCC will stop charging the iCare Mini.

**Battery Level Indication:** The white indicator light will stay lit or flash slowly after a puff when the battery level is high. On the contrary, the light will flash in frequency.

Battery Level	Light Condition
3.8V-4.2V	Stay lit
3.65-3.8V	Slowly flashes
3.45-3.65V	Moderately flashes
3.0-3.45V	Flashes in frequency

Warranty

We are not responsible for any damages caused by human error. Legal warranty is applied.

Warnings

1. Please keep out of reach of children.
2. This product is not recommended for use by young people, non-smokers, pregnant

or breast-feeding women, or persons who are allergic/sensitive to nicotine.

Contra-indication

1. Do not attempt to repair the product by yourself as damage or personal injury may occur.
2. Do not leave the product in high temperature or damp conditions, otherwise it may be damaged.
3. Do not use this product for other purposes except only for vaping and don't swallow the e-liquid.

Possible Adverse Effects

1. This product may be hazardous to health and contains nicotine which is addictive.
2. For people with adverse reaction after using this product, it is recommended to use the e-liquid with lower nicotine content or no nicotine.