



Email: info@ismoka.com
Web: www.eleafworld.com



MADE IN CHINA
Manufactured by Eleaf



MELO III/MELO III Mini Atomizer User Manual

Notice for Use

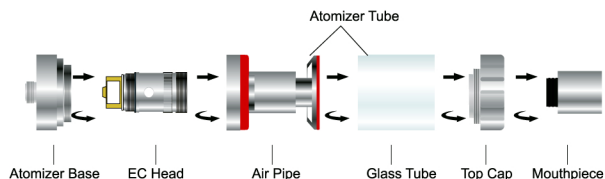
Thank you for choosing Eleaf products! Please read this manual carefully before use so as to use correctly. If you require additional information or have questions about the product or its use, please consult your local agents, or visit our website at www.eleafworld.com.

Product Introduction

The MELO III/MELO III Mini is compact in size, newly adopting the top e-liquid filling design for ease of refilling e-liquid by removing the top cap only. Its detachable structure brings more convenience in reassembling and cleaning. All stainless steel construction with hidden airflow control is also a plus to its simple but fashionable appearance.

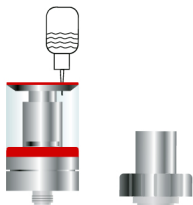
How to assemble

1. First mount the atomizer head onto the atomizer base tightly;
2. Then screw the atomizer tube onto the atomizer base tightly;
3. Finally assemble together the top cap and mouthpiece.



How to fill e-liquid

1. First unscrew the top cap off the MELO III/MELO III Mini atomizer;
2. Then slowly fill the e-liquid into the atomizer along the glass tube;
3. Finally screw the top cap tightly onto the MELO III/MELO III Mini atomizer again.



Note:

1. Please don't add e-liquid into the air pipe and don't overfill.
2. Please first drip a few drops of e-liquid directly into the wick of the coil to make it fully saturated before first use.

How to adjust airflow

The amount of air inflow can be adjusted by rotating the airflow control ring on the atomizer base, clockwise to increase and counterclockwise to decrease.

Precautions

1. Only have your MELO III/MELO III Mini atomizer repaired by Eleaf. Do not attempt to repair the unit by yourself as damage or personal injury may occur.
2. Do not leave the MELO III/MELO III Mini atomizer in high temperatures or damp conditions, otherwise it may be damaged. The appropriate operation temperature is within -10°C to 60°C while using.
3. Do not attempt to combine the MELO III/MELO III Mini atomizer with parts from other brands of e-cigarettes. If it is damaged in this way, our company will not take on responsibility and your warranty will be void.

Warnings

1. Please keep out of reach of children.
2. It is not recommended for use by young people or non-smokers.

Warranty

We are not responsible for any damages caused by human error. Legal warranty is applied.