

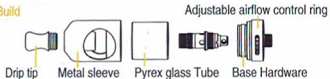
aspire®

Nautilus 2 Tank User Manual



To avoid leakage, please refrain from refilling your tank above the max line indicator.

Tank Build



Coil installation

1. Unscrew and remove the metal sleeve
2. Remove the glass tube
3. Unscrew to remove the used coil.
4. Attach a new coil onto the base hardware

Top fill

1. Unscrew and remove the metal sleeve
2. Add your preferred e-liquid into the glass tube
3. Replace the stainless steel sleeve



When using a new atomizer, let the tank stand for 2 minutes, so the cotton can be saturated with juice before firing.

Do not let the tank become completely empty. Refill the tank to avoid dry burning or damage to the atomizer.

* Keep out of reach of children and minors!

This product contains nicotine which is a highly addictive substance.

The above warning only applies when this device has been filled with nicotine containing e-liquid