

Pointhouse

T!PA **IMPILABILE / STACKABLE**

Design **Arter&Citton**

Scheda tecnica
/ Technical sheet



Sedia impilabile in tecnopolimero integrale, realizzata con la tecnica dello stampo ad iniezione.

Grande attenzione è stata posta ai dettagli formali, per rendere il prodotto essenziale e fruibile in tutti gli spazi: flessibile e versatile nella sua collocazione negli spazi indoor ed outdoor, T!PA è disponibile sia nella versione con braccioli che senza braccioli.

Può essere dotata di un cuscino sfoderabile e lavabile nella seduta.

Con il lancio della sedia, sono stati proposti i nuovi colori del polipropilene, esaltati dal design fresco e giovane di T!PA: uno di questi è il nuovo EG rosso mattone, protagonista del lancio pubblicitario!

La sedia T!PA è dotata della certificazione CATAS.

Stackable chair in technopolymer, made with the injection molding technique.

Great attention has been paid to the formal details, to make the product minimalistic and usable in all spaces: flexible and versatile in its placement in indoor and outdoor spaces, T!PA is available both with and without armrests.

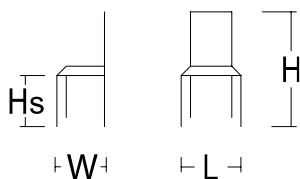
It can be accessorized with a removable and washable cushion on the seat.

With the launch of the chair came out the new polypropylene finishes, emphasized by the fresh and young design of T!PA: one is the new EG brick red, protagonist of the advertising launch!

T!PA chair is CATAS certified.

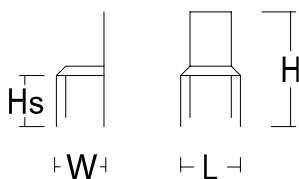
MISURE / SIZE:

Senza braccioli



L.49XW.49XHS.47XH.84

Con i braccioli



L.58XW.49XHS.47XH.84

PESO & IMBALLO / WEIGHT & PACKING:



Numero colli
Boxes number

T!PA

Box: 67X52X100
m3 0,35
tot. Kg. 15

Kg. 3,75 a sedia
/ per chair

T!PA CON CUSCINO WITH CUSHION

Box: 67X52X100
m3 0,35
tot. Kg. 19

Kg. 4,75 a sedia
/ per chair

T!PA CON BRACCIOLI WITH ARMRESTS

Box: 67X62X100
m3 0,42
tot. Kg. 16,5

Kg. 4,13 a sedia
/ per chair

T!PA CON BRACCIOLLE E CUSCINO WITH ARMRESTS AND CUSHION

Box: 67X62X100
m3 0,42
tot. Kg. 20,5

Kg. 5,13 a sedia
/ per chair

FINITURE / FINISHES:

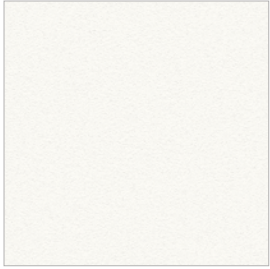
Seduta / seat:

Polipropilene
polypropylene

Polipropilene / Polypropylene

Polimero termoplastico caratterizzato da un elevato carico di rottura, una bassa densità, una buona resistenza termica e all'abrasione.

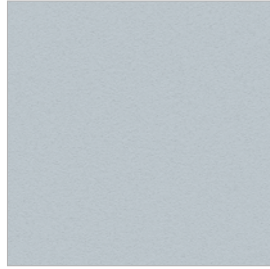
Thermoplastic polymer characterized by a high tensile strength, low density, good thermal and abrasion resistance.



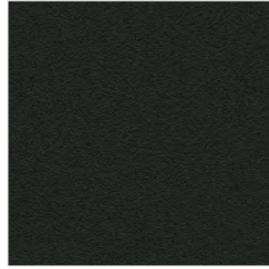
E1 BIANCO
WHITE



E3 GRAFITE
GRAPHITE



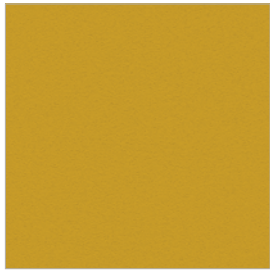
E4 GRIGIO CHIARO
LIGHT GREY



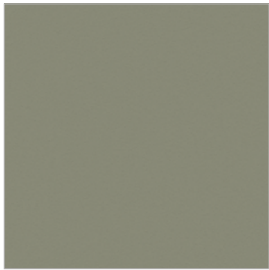
E7 NERO
BLACK



E9 TORTORA
DOVE GREY



EE GIALLO
YELLOW

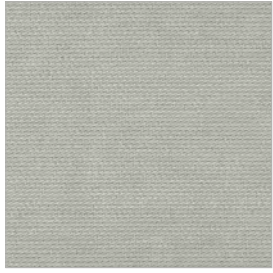


EF VERDE OLIVA
GREEN OLIVE

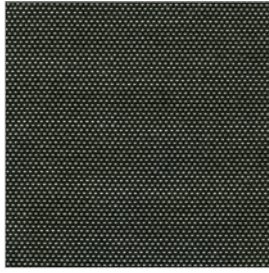


EG ROSSO MATTONE
BRICK RED

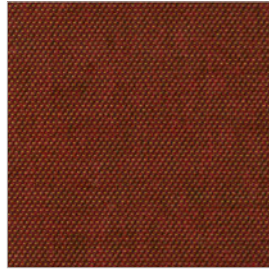
Tessuto Angel Trick / Angel Trick fabric



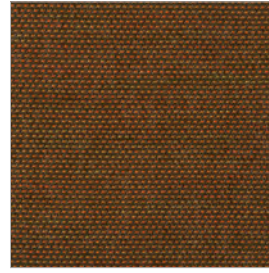
T101



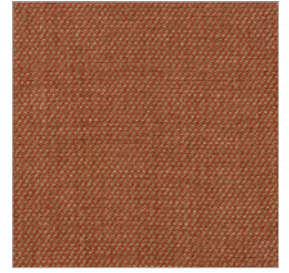
T221



T301



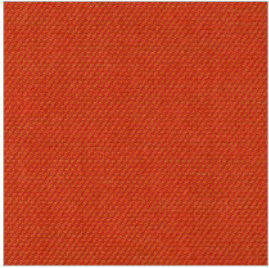
T302



T303



T304



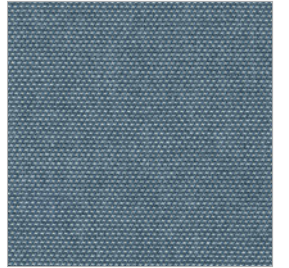
T306



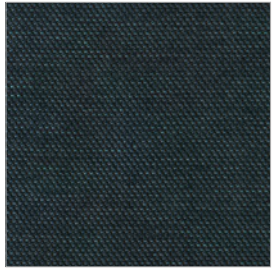
T400



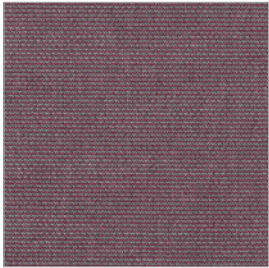
T406



T701



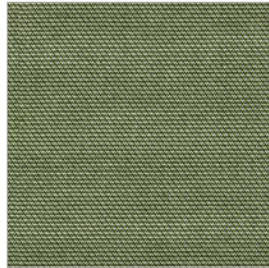
T702



T703



T704



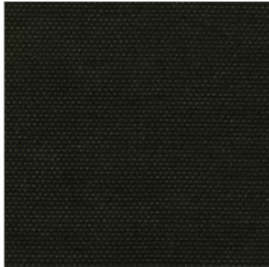
T801



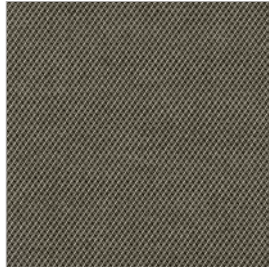
T803



T204



T405



T602



T900



abitex

abitex srl
via del cristo 84
33044 manzano
ud - italy

t +39 0432 746060
www.abitex.eu
info@abitex.eu

angel trick 08163



IT

codice doganale

54072011.

utilizzo

tende, imbottiti.

caratteristiche

100% polipropilene, altezza cm \pm 140,
peso \pm 350 gr/m².

tintura

il prodotto é tinta in massa.

lunghezza pezze

circa 35 mtl.

abrasione

50.000 cicli, ISO 12947-2.

solidità alla luce

4-5, ISO 105 B02.

solidità allo sfregamento

secco 5, umido 4/5, ISO 105 X12.

resistenza alla cucitura

ordito 3 mm, trama 2 mm, ISO 13936-2.

pilling

4-5, ISO 12945-2.

resistenza al fuoco

1IM - UNI 9175; EN 1021 1/2; BS 5852 crib 5;
NF D 60 013; California TB 117-2013;
IMO FTP Code 307 part 8.

attenzione

sono ammesse leggere differenze di colore tra differenti partite.

EN

customs code

54072011.

use

curtains, upholstered furniture.

features

100% polypropylene, width cm \pm 140,
weight \pm 350 g/m².

dyeing

solution dyed product.

roll length

approx. 35 lm.

abrasion resistance

50.000 rubs, ISO 12947-2.

colour fastness to light

4-5, ISO 105 B02.

fastness to rubbing

dry 5, wet 4/5, ISO 105 X12.

seam slippage

warp 3 mm, weft 2 mm, ISO 13936-2.

pilling

4-5, ISO 12945-2.

fire resistance

1IM - UNI 9175; EN 1021 1/2; BS 5852 crib 5;
NF D 60 013; California TB 117-2013;
IMO FTP Code 307 part 8.

attention

slight colour differences between different batches are allowed.



fireproof



imo-med

Tessuto Flash Nativa /Flash Nativa fabric



F001



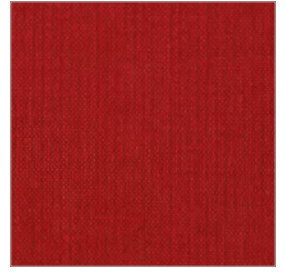
F002



F101



F200



F300



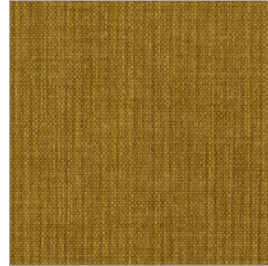
F301



F305



F403



F500



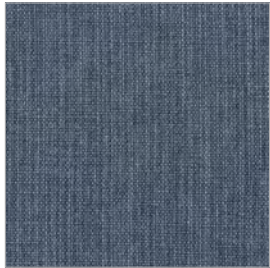
F601



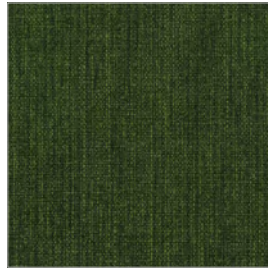
F700



F705



F707



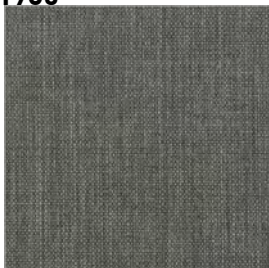
F800



F804



F402



F600



F602



abitex

abitex srl
via del cristo 84
33044 manzano
ud - italy

t +39 0432 746060
www.abitex.eu
info@abitex.eu

flash nativa

08091



IT

codice doganale

54072011.

utilizzo

imbottiti.

caratteristiche

100% polipropilene, altezza cm \pm 140,
peso \pm 320 gr/m².

tintura

il prodotto é tinta in massa.

lunghezza pezze

circa 35 mtl.

abrasione

> 70.000 cicli, ISO 12947-2.

solidità alla luce

4-5, ISO 105 B02.

solidità allo sfregamento

secco 5, umido 4/5, ISO 105 X12.

resistenza alla cucitura

ordito 3 mm, trama 3 mm, ISO 13936-2.

pilling

4-5, ISO 12945-2.

attenzione

sono ammesse leggere differenze di colore tra differenti partite.

EN

customs code

54072011.

use

upholstered furniture.

features

100% polypropylene, width cm \pm 140,
weight \pm 320 g/m².

dyeing

solution dyed product.

roll length

approx. 35 lm.

abrasion resistance

50.000 rubs, ISO 12947-2.

colour fastness to light

4-5, ISO 105 B02.

fastness to rubbing

dry 5, wet 4/5, ISO 105 X12.

seam slippage

warp 3 mm, weft 3 mm, ISO 13936-2.

pilling

4-5, ISO 12945-2.

attention

slight colour differences between different batches are allowed.

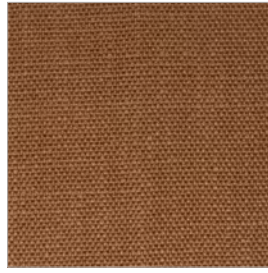
Tessuto M.A.M. / M.A.M. fabric



M001 BEIGE
BEIGE



M002 BISCOTTO
BISCUIT



M007 TERRACOTTA
TERRACOTTA



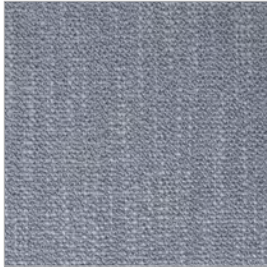
M013 OTTANIO
TEAL



M014 BLU
BLUE



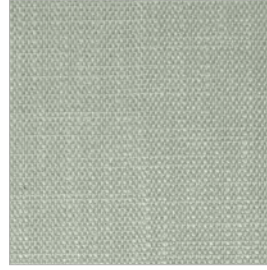
M015 JEANS
JEANS



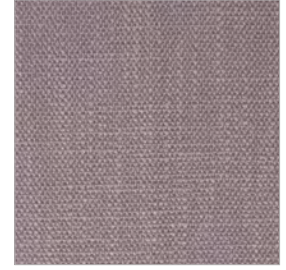
M016 AZZURRO
LIGHT BLUE



M019 PERLA
PEARL



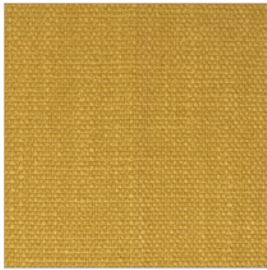
M021 PALUDE
SWAMP



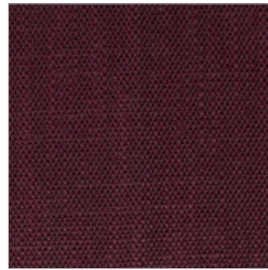
M023 MALVA
MAUVE



M027 CENERE
ASH



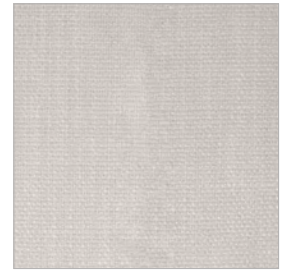
M028 GIALLO
YELLOW



M080 AMARENA
BLACK CHERRY



M105 CIPRIA
POWDER PINK



M200 NATUR
NATUR



M204 MUSCHIO
MOSS



M205 ANTRACITE
ANTHRACITE



M616 FERRO
IRON



M.A.M.

tessuti

181 Favignana



IT

altezza

140 cm

composizione

87PL 13VI

peso mtl

840 gr

resistenza al pilling

4 - ISO 12945 - 2

resistenza all'abrasione

50000 metodo martindale BSI 5690

solidità alla luce

5 XENO TEST

note

Idrorepellente

EN

hight

140 cm

structure composition

87PL 13VI

weight mtl

840 gr

pilling resistance

4 - ISO 12945 - 2

abrasion resistance

50000 metodo martindale BSI 5690

fastness to light

5 XENO TEST

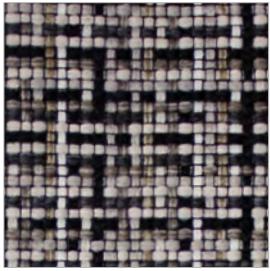
note

waterproof

Tessuto M.A.M. Idrorepellente / *Water repellent M.A.M. fabric*

Un ampliamento della gamma tessuti MAM, dedicata ai cuscini accessorio del programma TIPA.
Questi tessuti idrorepellenti rendono il cuscino perfetto per l'utilizzo in ambienti cucina come in ambienti outdoor.

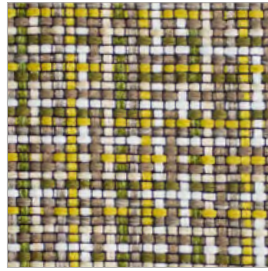
*An extension of the MAM fabric range, dedicated to the accessory cushions of the TIPA program.
These water-repellent fabrics make the cushion perfect for use in both kitchen and outdoor environments.*



S018



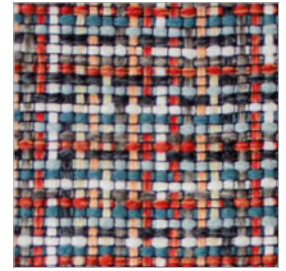
S021



S024



S080



S101



S130



S800



SCHEMA TECNICA ART. 2468 MOSAICO

	VALORI	METODO
ALTEZZA	140 Cm	
COMPOSIZIONE	100 PL	
PESO MTL	520 Gr	
RESISTENZA AL PILLING	4	
RESISTENZA ALL'ABRASIONE	40000 cicli	metodo MARTINDALE BSI 5690
SOLIDITA' ALLA LUCE	4	XENO TEST

MODALITA' DI LAVAGGIO	
-----------------------	--

STABILITA' LAVAGGIO

Lavaggio a Secco	TRAMA %	0	ORDITO %	0
Lavaggio a Acqua	TRAMA %	0	ORDITO %	0

NOTE: IDROREPELENTE

ANTIMACCHIA