

FABRICS



TREND FABRICS

MONO

Betty (upholstery)



BE
beige



MA
brown



GR
grey



OT
teal



AR
orange



PR
plum

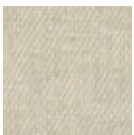
Composition 80% CO, 12% PC, 8% AF

Martindale 28.000

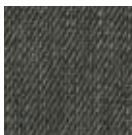


MELANGE

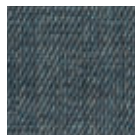
Betty (cushions)



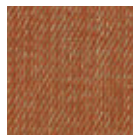
C1
beige



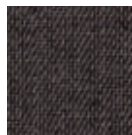
C2
grey



C3
teal



C4
orange



C5
plum

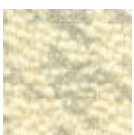
Composition 39% VI, 24% PC, 19% CO, 13% PL, 5% LI

Martindale 30.000

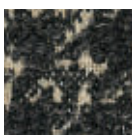


JACQUARD

Betty (cushions)



D1
beige



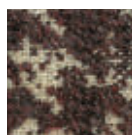
D2
grey



D3
teal



D4
orange



D5
plum

Composition 40% WO, 20% VI, 15% CO, 10% PL, 10% LI, 5% PC

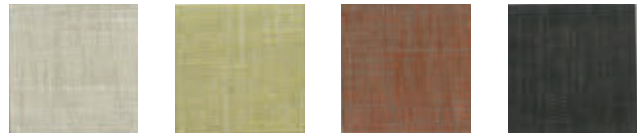
Martindale 40.000



TREND FABRICS

SOLID

Cara



1A
beige

2B
green

3C
rusty

4D
anthracite

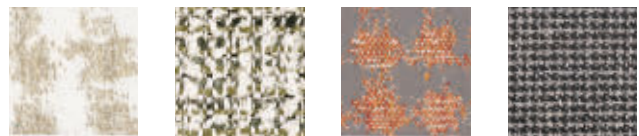
Composition 62% VI, 22% CO, 11% LI, 5% PL

Martindale 30.000



FANCY

Cara



1E
white-beige

2F
green-black

3G
rusty-beige

4H
black-beige

1E white-beige - 3G rusty-beige

Composition 44% CO, 27% VI, 22% PL, 6% LI, 1% SE

Martindale 30.000



4H black-beige

Composition 38% VI, 30% CO, 20% PL, 12% LI

Martindale 25.000



2F green-black

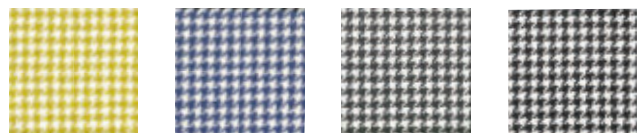
Composition 32% CO, 50% VI, 7% LI, 3% WO, 8% PC

Martindale 20.000



PIED DE POULE

Largo/Clap



TV
mustard

TB/NE
blue

TG/NF
grey

TN/NH
black

Composition 49% LI, 38% CO, 13% VI

Martindale 35.000



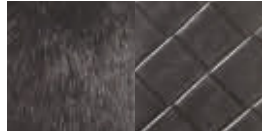
TREND FABRICS

KRAVITZ

Mademoiselle Kravitz



07
faux-fur - snake print fabric



09
faux-fur - woven fabric



81
raffia fabric - woven fabric

07 faux-fur - snake print fabric

Composition 100% MA - 62% VI, 30% CO, 8% PL

09 faux-fur - woven fabric

Composition 100% MA - 42% VI, 40% CO, 18% WO

81 raffia fabric - woven fabric

Composition 100% PVC - 42% VI, 40% CO, 18% WO

SANDERSON

Clap/Cushions



J/V1
chelsea



I/V2
peony



K/V3
kew

Composition 60% LI, 30% CO, 10% NY

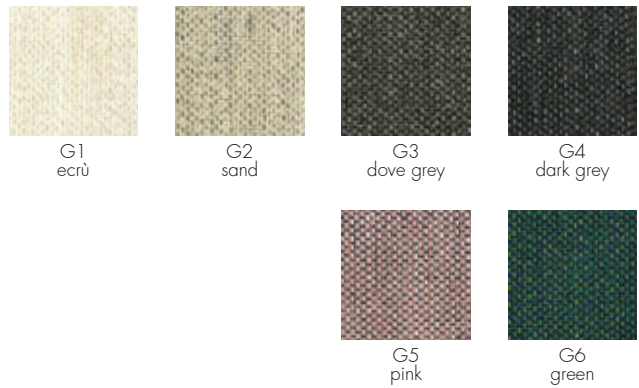
Martindale 40.000



TREND FABRICS

MATCH

Largo/Plastics Duo/Cushions



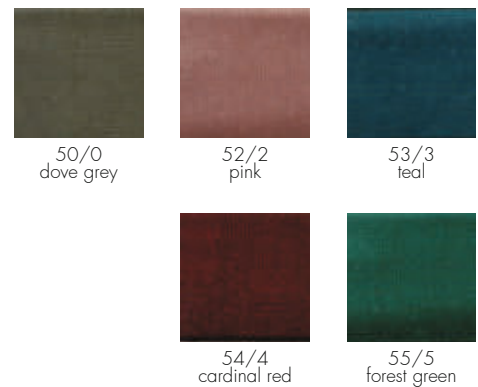
Composition 48% CO, 15% VI, 7% LI, 30% PL

Martindale 52.000



VELVET

Largo/Foliage/Cushions



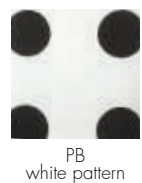
Composition 100% PL

Martindale 100.000



PATTERN

Mademoiselle/Pop/Cushions



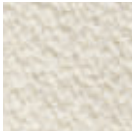
Composition 100% CO

TREND FABRICS

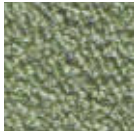
NEW!

ORSETTO

Lunam/Charla/Cushions/Plastics Duo



1/01/01
white



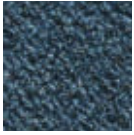
2/02/02
green



3/03/03
brown



4/04/04
rusty
orange



5/05/05
blue



6/06/06
grey

Composition 33% VI, 29% PC, 15% WO, 8% CO, 7% PL, 6% LI, 1% PA, 1% EA

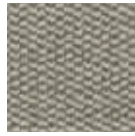
Martindale 60.000



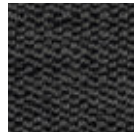
CLASSIC FABRICS

ANTIBES NEW!

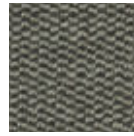
Lunam/Charla/Cushions



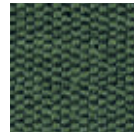
1/01
beige



2/02
anthracite



3/03
pale
grey



4/04
green



5/05
wine

Composition 90% PL, 10% VI

Martindale >50.000



FLAME
PROOF



IMO
International
Maritime
Organization
Certification

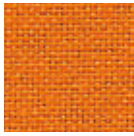
CLASSIC FABRICS

TREVIRA

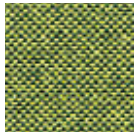
Audrey Soft/Maui Soft



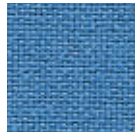
G/GG
red



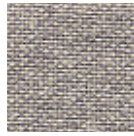
E/EE
orange



S/SS
acid green



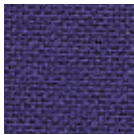
R/RR
teal



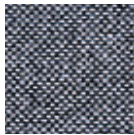
D/DD
beige



M/MM
brown



P/PP
blue



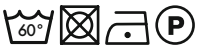
C/CC
grey



B/BB
black

Composition 100% PL Trevira

Martindale 65.000



NOMA new fabric made of 100% recycled polyester

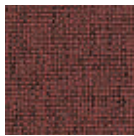
Audrey Soft/Maui Soft



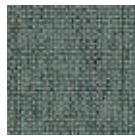
1/NG
grey



2/NS
mustard



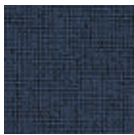
3/NM
ochre



4/NV
green



5/NB
beige



6/NL
blue

Composition 100% Recycled PL

Martindale 60.000



Highly usable and all-round design

Classic colours with a twist

Superior fire resistance

Good stretch properties

Prolongs furniture life

Strong environmental profile

No heavy metal

100% post-consumer recycled flame retardant polyester

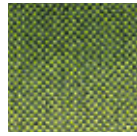
STANDARD 100 by OEKO-TEX®

Meet Möbelfakta requirements

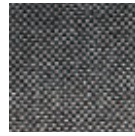
CLASSIC FABRICS

TREVIRA

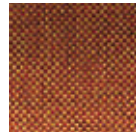
Foliage



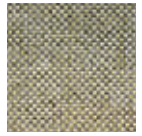
D
green



C
grey



B
orange



A
beige

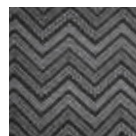
Composition 100% PL Trevira

Martindale 75.000



REGULAR

Madame



1
grey



2
beige

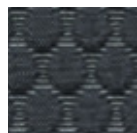
Composition 65% VI, 30% PL, 5% CO

Martindale 50.000



EMBOSSED

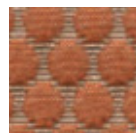
Clap



2
graphite



3
grey



4
orange



5
beige

Composition 100% PL

Martindale 25.000



CLASSIC FABRICS

COATED FABRIC

Clap/Madame



P/3
plum



T/4
dove grey



M/5
brown



G/6
dark grey



N/7
black



L/8
tobacco



V/9
green

Composition 84% PVC, 16% CO

Martindale 75.000



Betty



NP
black



GP
grey



TP
dove grey



MP
brown

Composition 91% PVC, 9% PL

Martindale 100.000



Made in Italy

Anti-microbial and anti-bacterial protection

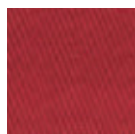
Material produced without the use of ortho-phthalates

Conforming to Reach regulations

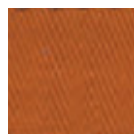
CLASSIC FABRICS

COTONE

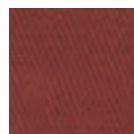
Pop/Pop fire tested



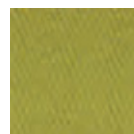
43
red



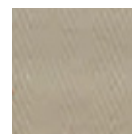
40
orange



46
ochre



47
green



45
ecru



41
white



48
blue



44
grey

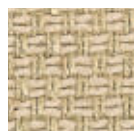
Composition 100% CO

Martindale 30.000



NILO

Largo/Pop Duo/Plastics Duo



72
dove



73
orange



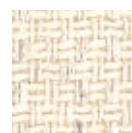
74
green



75
grey



70
white



71
ecru

Composition 46% CO, 45% VI, 8% LI, 1% SE

Martindale 20.000



À LA MODE FABRICS

MISSONI

Pop/Mademoiselle/Cushions



QQ
vevey red tones

Composition 100% CO

Martindale 25.000



MOSCHINO

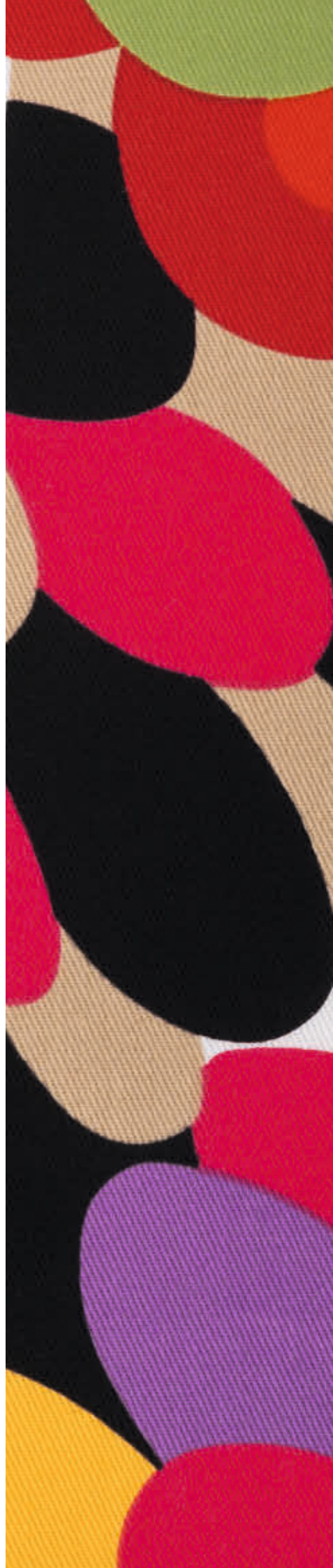
Mademoiselle



FM
sketches

Composition 100% CO

Martindale 39.000



À LA MODE FABRICS

EMILIO PUCCI

Madame



PA
Paris



NY
New York



SH
Shanghai



RO
Rome



MI
Milan

Composition 100% PES

Martindale 60.000



OUTDOOR FABRICS

SUNBRELLA®

Pop Outdoor



20
white



21
ecru



22
dove



27
blue

Composition 100% PC

Martindale 15.000/25.000



IKON

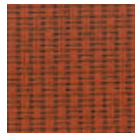
Pop Outdoor



30
white



31
dove



32
orange

Composition 84% PP, 16% PL

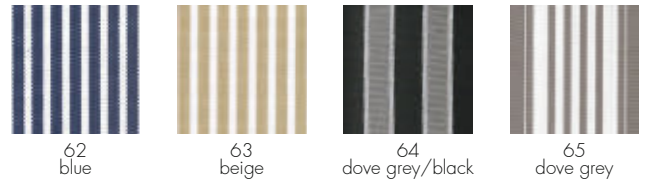
Martindale 35.000



OUTDOOR FABRICS

DYED FIBER

Pop Outdoor/Cushions



62
blue

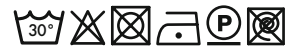
63
beige

64
dove grey/black

65
dove grey

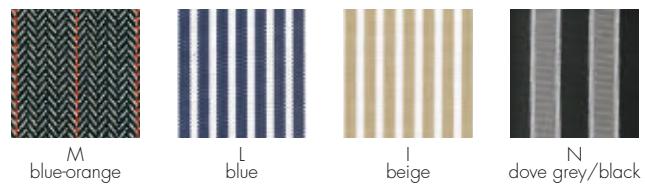
Composition 100% PC (solution dyed acrylic)

Martindale 20.000



DYED FIBER

Cara Outdoor



M
blue-orange

L
blue

I
beige

N
dove grey/black

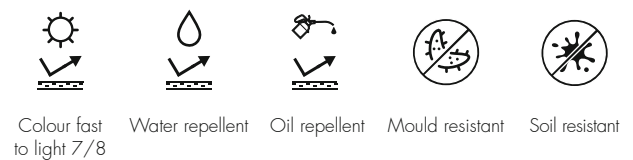
Composition 100% PC (solution dyed acrylic)

Martindale 20.000



M blue-orange

Martindale 30.000



Colour fast
to light 7/8

Water repellent

Oil repellent

Mould resistant

Soil resistant

TECHNICAL FABRICS

AQUACLEAN®

Q/Wood/Clap



S4/C4/1
ecru



S3/C3/2
brown



S1/C1/3
black



S5/C5/4
green



S2/C2/5
powder blue

Clap



6
blue

Composition 50% PES, 35% PAC, 1.5% PA

Martindale 250.000



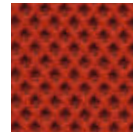
Kartell has decided to include the innovative Aquaclean® fabric, which can be cleaned with water and contains no PFC, a substance contained in most stain-resistant fabrics which pollutes the environment and is harmful to health.

This ecological fabric has a structure designed to simplify cleaning and strength, reducing the risk of accidental tearing sometimes caused by our pets. It is also subject to Safe Front treatment, which prevents the proliferation of bacteria and dust mites.

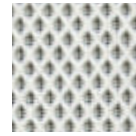
TECHNICAL FABRICS

NEST

Trix



O2
orange



O3
white



O9
slate

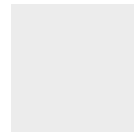
Composition 100% PL

Martindale 30.000



PLAIN

Plastics Tech Fabric



PB
white



PN
black



PG
grey



PV
green



PP
powder blue



PM
ochre

Composition 55% SI, 45% PL

Martindale 130.000



Pen, marker, lipstick...
"Write on and Erase me".
The genuine eco-friendly faux leather.

Recyclable, eco-friendly, healthy, non toxic, free from: solvents, PVC, PU, PFC, formaldehyde, plasticizers, phthalates, heavy metals, BPA, allergens, anti-bacterial additives, biocides, flame retardant substances.

The fabric is suitable for medical use; is resistant to customary disinfecting agents which content alcoholics, aldehydes, quaternary ammonium compounds, oxygen agents, alkylamines as active ingredients.
INSPECTED QUALITY by OETI (Institute for Ecology, Technology and Innovation)



INSPECTED
QUALITY
by OETI



Soil resistant

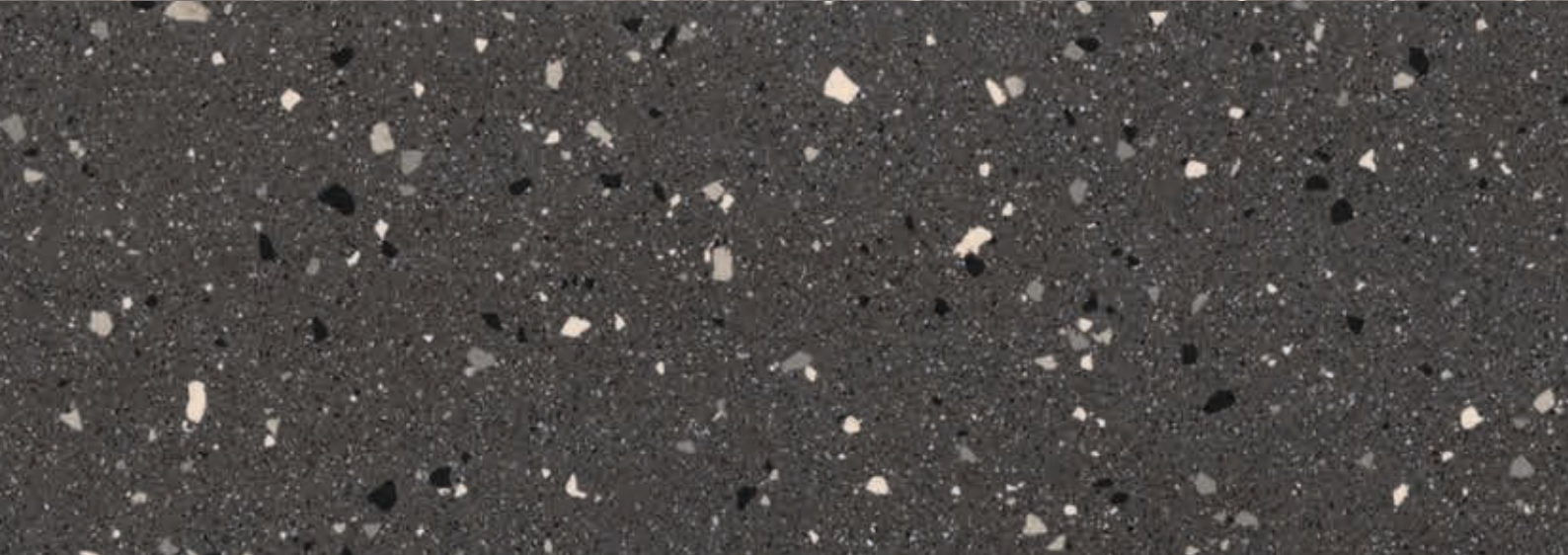
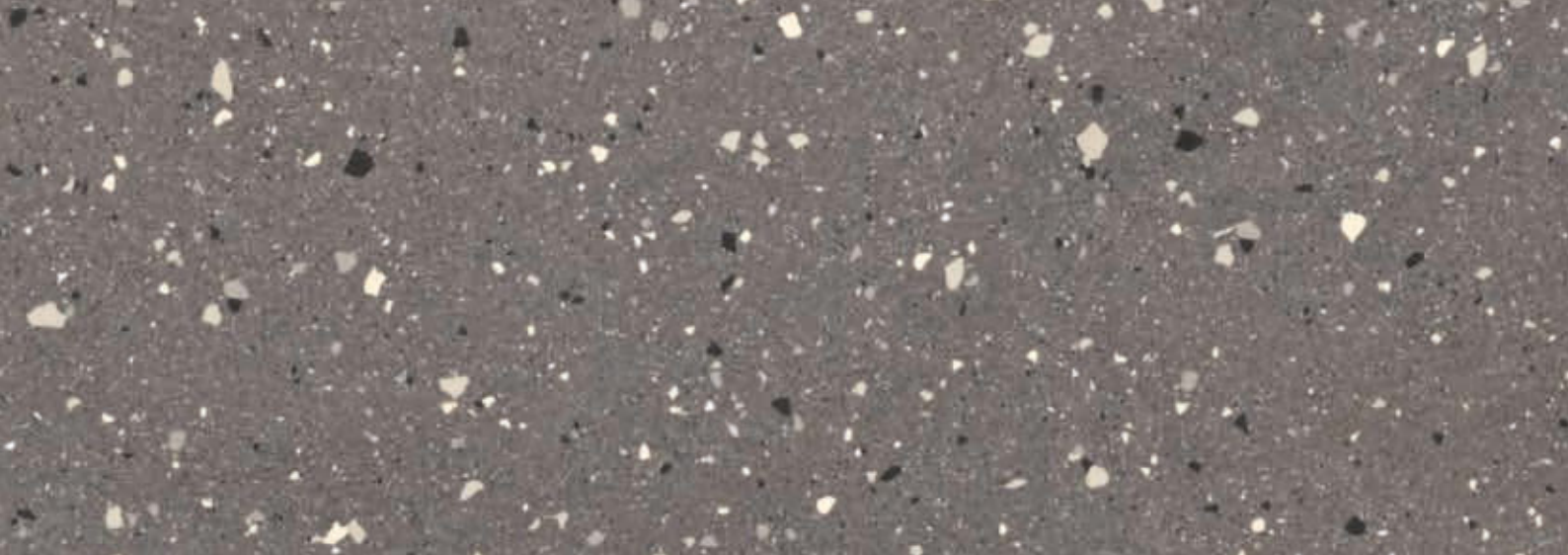


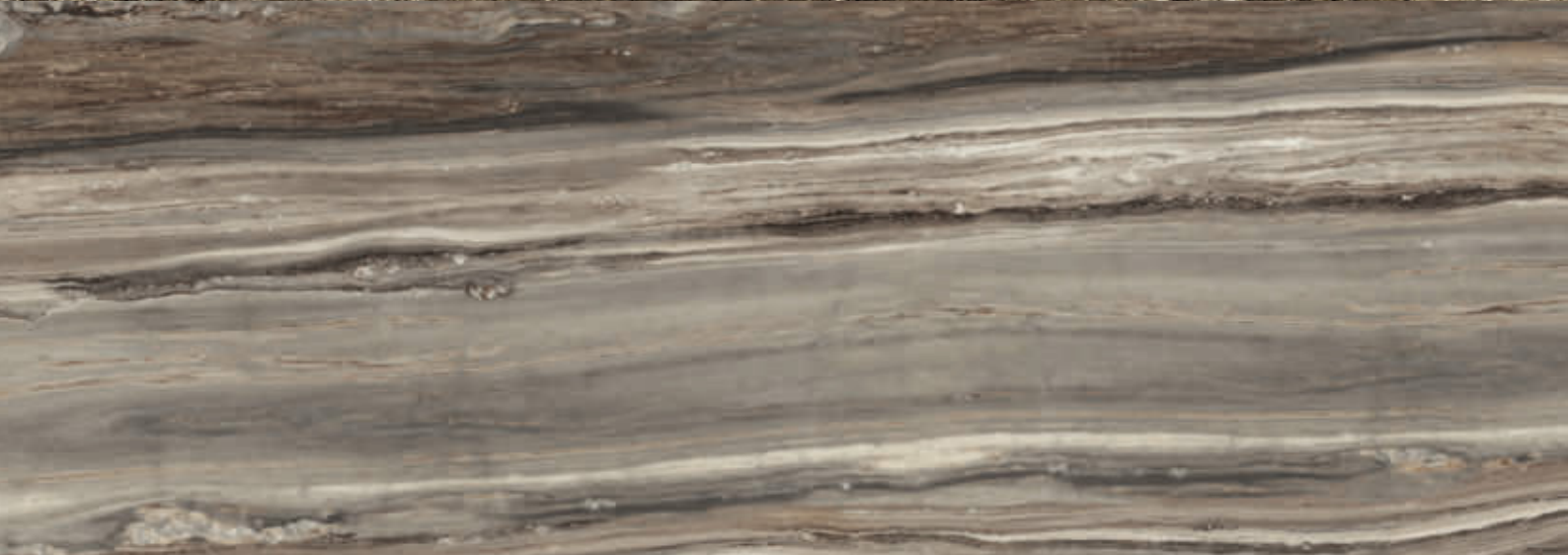
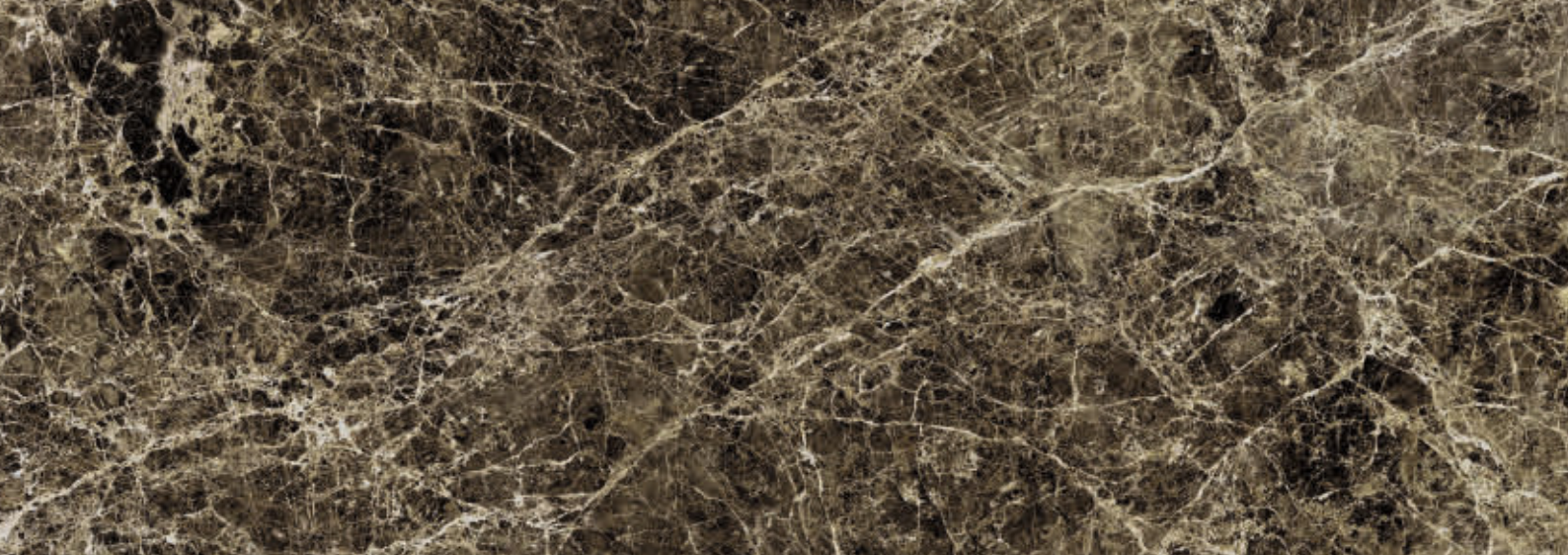
Easy clean

stoneware with

MARBLE FINISH







STONEWARE WITH **MARBLE FINISH**

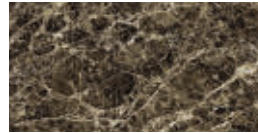
Multiplo/Glossy



MG
Tropical Grey



MS
Symphonie



MM
Brown Emperor



CN
Aged Bronze



MB
White

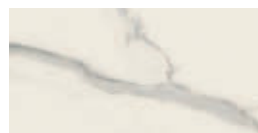


MN
Black

Four



MS
Symphonie



MB
White



MN
Black

Undique



QW
Terrazzo black



MW
Terrazzo light gray

Composition 40% Clay, 40% Feldspat, ~20% Sand and quartz, ~15% Kaolin and carbonate

Certifications CE EN 14411:2012, LEED, UL Greenguard

WOOD







P/Wood Q/Wood K/Wood S/Wood AI Wood



Basic Veneer Light



Basic Veneer Dark



Slatted Ash Light



Slatted Ash Dark

Earl of Wood



Basic Veneer Light



Basic Veneer Dark



Slatted Ash Black

Adam Wood



Basic Veneer Dark



Slatted Ash Black

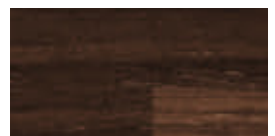
Viscount of Wood



Ash

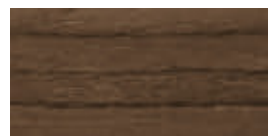


Walnut



Brown

Lunat



Walnut



The mark of responsible forestry

Certifications FSC™

USE AND MAINTENANCE

Simple care is needed for the maintenance of Kartell products to retain the original features of the materials.

PLASTIC MATERIALS

Cleaning. Use a soft damp cloth with soap or a liquid detergent, preferably diluted with water.

The use of the following substances must absolutely be avoided: acetone, trichloroethylene, ethyl alcohol or detergents containing even small quantities of these substances which cause irreparable damage to the plastic of which the products are made.

We recommend always using a damp cloth to prevent plastic surfaces from becoming charged with static electricity which attracts dust. Also avoid abrasive solvents, cleaning powders and creams, steel wool or rough sponge cloths.

Use. Do not drag objects across the plastic surface, even if it has a scratch resistant finish, since sharp objects can damage the plastic just as they would damage wood or metal. Do not place very hot plates or pots directly on the surface, but always use a cloth or trivet.

WOOD

Cleaning. As with plastic surfaces, use a soft damp cloth. Do not use alcohol or other spot-removers. For a deeper cleaning use a little non-abrasive liquid detergent and wipe in the direction of the wood grain. Dry the surface well with a soft cloth. Never use acetone, trichloroethylene or ammonia.

Use. Moisture in wood can cause swelling which is normal in a natural material. Our woods hold up well under normal temperature and humidity conditions. Slight color variations from one piece of wood to another are normal and these tend to disappear with time. Wood can change color over time. To delay this, it is best to avoid placing it in direct sunlight.

METALS

Cleaning. Normal dirt on either painted or plain metallic steel or aluminium surfaces must be removed with soap and water (preferably hot) and neutral liquid detergent; dry with a soft cloth or with a chamois cloth. Never use cleaning powders, abrasive or steel wool pads, which can cause scratching, or liquid detergents that contain chlorine or its derivatives such as bleach or muriatic acid.

Use. Avoid spilling grapefruit juice, cola, salt and coffee on metal surfaces. These can cause indelible stains. To remove black marks on aluminium chair legs, products especially made for steel finishes or non-abrasive car polishes are recommended.

FABRIC COVER

Kartell uses different kinds of covers, for each one you may find the appropriate cleaning and usage instructions within the instruction card enclosed in the packaging.

STONEWARE

Cleaning. For routine surface cleaning, simply use a damp microfibre cloth.

For more thorough periodical cleaning, use a neutral liquid detergent with a soft sponge or

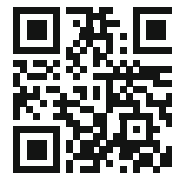
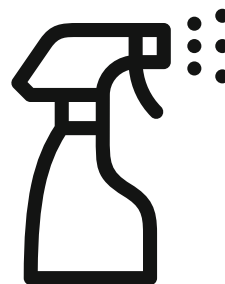
microfibre cloth.

Use. Quickly remove any traces of liquids with the potential to stain (e.g. coffee, tea, red wine), plus acids or colouring agents, rinsing the surface with water.

Hot pans can be placed directly on the slabs, however, to preserve the original beauty over time, we recommend using a trivet.

As ceramic knives can damage the surface, we recommended using a chopping board.

Avoid knocks on fragile areas such as edges and corners.



product charts