



 **emu**

STEEL

## Steel

Iron and carbon alloy, with carbon content below 2%, treated to withstand the elements with the unique EMU-Coat anti-corrosio process.

[Video "How to preserve metals"](#)

### USE AND MAINTENANCE

To keep the product in good condition for a long time, we recommend storing it indoors and in a dry place during the winter to prevent condensate from forming. Before the winter and on a quarterly basis, if the products are kept near the sea, it is recommended to clean the metal surfaces with a soft cloth using water or detergent and protect them with Vaseline oil or car wax.



 **emu**

ALUMINIUM

## Aluminium

Aluminium alloys, particularly suitable for cold-working and for die-casting, appropriately treated to withstand the elements and powder coated.

[Video "How to preserve metals"](#)

### USE AND MAINTENANCE

To keep the product in good condition for a long time, we recommend cleaning it regularly; more often in very damp locations with a marine climate. It is recommended to clean the surfaces using a soft cloth with water or mild detergents. Prolonged and continuous exposure to intense UV radiation or very low temperatures can affect the initial characteristics of the coloured coating, which is made from polyester. We recommend cleaning and storing the products in sheltered places during prolonged periods of non-use and during the winter.

## Colors



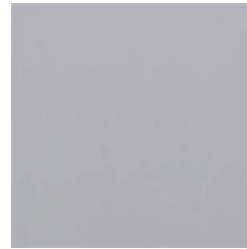
16 Marine blue



17 Military green



20 Brillox  
Aluminium



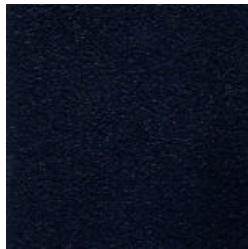
21 Anodized  
Aluminium



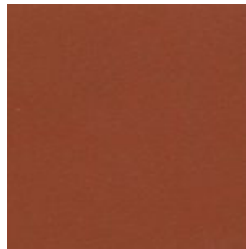
22 ANTIQUE IRON



23 MATT WHITE



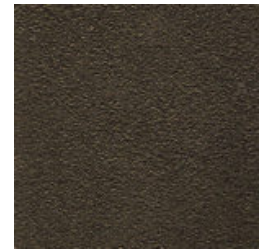
24 BLACK



26 Maple red



37 GREY / GREEN



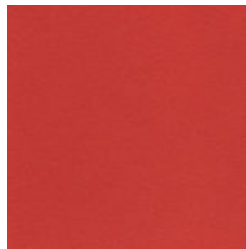
41 INDIAN BROWN



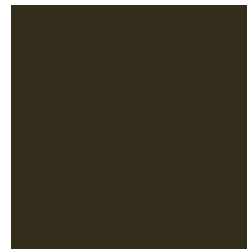
43 Sapphire Blue



46 Intense Red



50 SCARLET RED



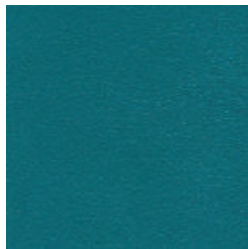
51 Glossy Bronze



52 Glossy Black



60 GREEN



61 BLUE



62 Curry yellow



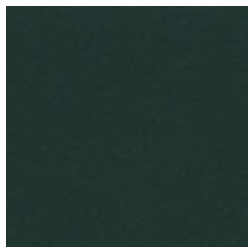
71 TAUPE



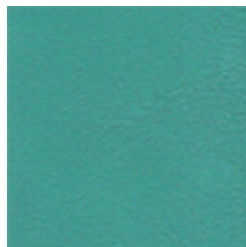
72 Cloud Grey



73 CEMENT



75 DARK GREEN



88 Ocean Green



STEEL MESHES

## Steel Meshes

Iron and carbon alloy, with carbon content below 2%, treated to withstand the elements with the unique EMU-Coat anti-corrosio process.

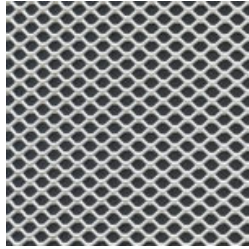
### USE AND MAINTENANCE

To keep the product in good condition for a long time, we recommend storing it indoors and in a dry place during the winter to prevent condensate from forming. Before the winter and on a quarterly basis, if the products are kept near the sea, it is recommended to clean the metal surfaces with a soft cloth using water or detergent and protect them with Vaseline oil or car wax."

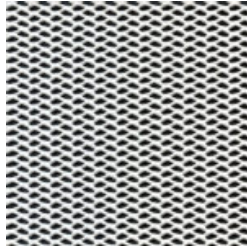
## Typology



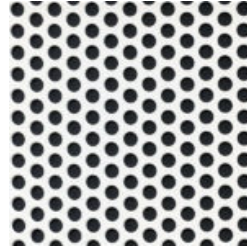
MESH SHEET  
METAL



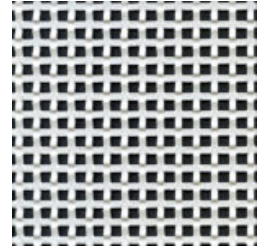
MESH SHEET  
METAL



MESH SHEET  
METAL



PERFORATED  
SHEET METAL



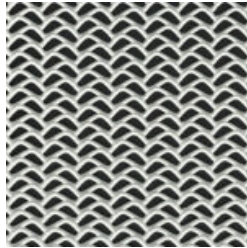
SIMULATED  
WOVEN SHEET  
METAL



SIMULATED  
WOVEN SHEET  
METAL



WOVEN MESH



Expanded Metal  
Sheet





 **emu**

TEAK

## Teak

Traditional wood used for outdoor furniture with an exotic and timeless appeal. Teak is a hard wood with a high oil content suitable for outdoor use, without the need of painting. If it does not receive any protective treatment, the surface will turn into a silvery-grey finish, the natural protection of the internal part of the wood, considered an essential part of teak's charm. The teak used for EMU products is FSC® certified.

### USE AND MAINTENANCE

As it is a natural material, it could have different nuances from one product to another or between components of the same product. In case of sudden changes in temperature and humidity, moreover, cracks may also occur. If it does not receive any maintenance treatment with the periodic application of common and specific oil-based protective products, the surface will turn into a silvery-grey finish that can be removed with a light sanding surface and subsequent polishing with an hessian cloth. Small stains caused by oil or other food products must be removed immediately, before the wood absorbs them, by sanding the concerned area and by polishing it with an hessian cloth. Stains from coffee, juices, natural drinks, without food additives, can be promptly removed with water and a soft cloth. When the wood gets wet for the first time, it is normal for the surface to become slightly rough when it dries; the initial polished-effect can be restored with light sanding surface and subsequent polishing with an hessian cloth. Teak is a natural material that absorbs water and is rich in oils. Over time, these oils, by a natural process can rise to the surface and stain the cushions that have been used. Stains on the cushions can be removed using soap and water.

## Colors



Teak



STANDARD FABRICS

## Standard Fabrics

Acrylic fabric: a fibre whose base element is a polymer chain consisting of 85% acrylonitrile. Acrylic fibre combines the aesthetic qualities of a luxurious fabric with the texture and feel of wool with the functional qualities of resistance to the elements: UV resistant, it does not stain and does not rot upon contact with water as it is fast-drying.

Polyester fabric: a fibre composed of linear macromolecules consisting mainly of polyethylene terephthalate. It has excellent mechanical properties: it withstands breakage, light and abrasion. It does not deform permanently, it has an excellent elastic recovery and is waterproof.

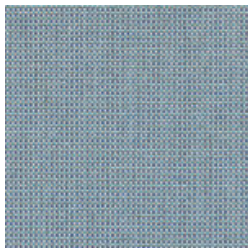
Polypropylene fabric: these are fibers that are generally very fine, with a high surface tension, thanks to which water can pass through and flow out quickly. Strength and durability are among the main advantages offered by this material, which also provides good thermal insulation.

Fabric 85% polypropilene, 15% polyester: mixed fabric with the two fibres mentioned above.

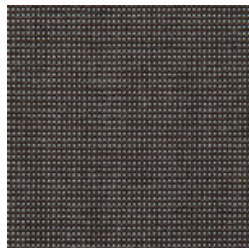
### USE AND MAINTENANCE

Avoid prolonged contact with greasy substances and/or dyes or colorants that could be absorbed by the covering material and cause permanent stains, as well as deteriorating the yarn structure. In the case of use near the sea or swimming pools, periodic washing is recommended. Frequent washing: follow the specific instructions given on the label for each material. Use water and non-abrasive, colorless, neutral PH liquid detergents. If necessary, allow the detergent to act for a few minutes. Rinse thoroughly with water at a temperature not higher than 30°C (86°F). If pressure cleaning devices are used, keep the tip of the nozzle at a distance of at least 60-70 cm from the surface of the product. If necessary, repeat the operation. Do not use abrasive sponges to remove stains and do not treat with bleach or chlorine.

## 85% Polypropylene, 15% Polyester



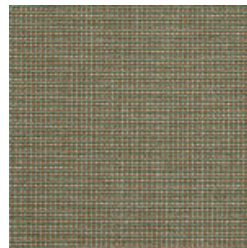
900/02 Sea



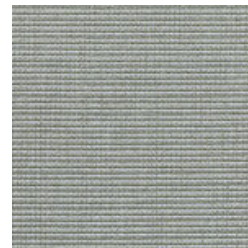
900/05 Brown



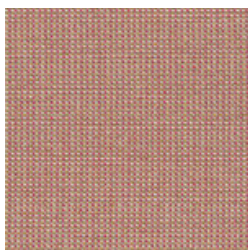
900/07 Chesnut



900/08 Sand



900/09 Sage



900/13 Salmon

## Acrylic

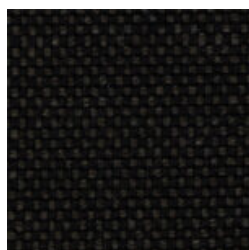


900/18 Nacre

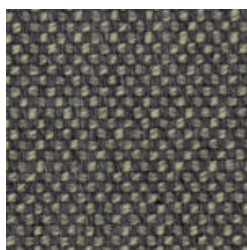
## Polypropylene



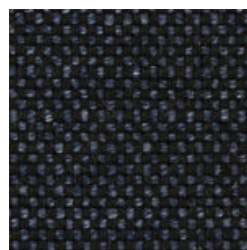
900/71 White



900/75 Ebony



900/77 Grey



900/79 Blue