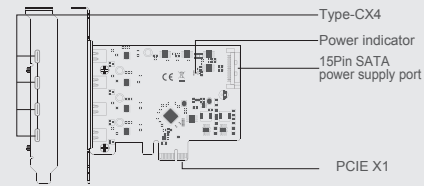


KC019 PCIe Card

### Introduction

Product name:

MAIWO KC019 PCIe1x1 to 4-port Type-C GEN1 interface extension card



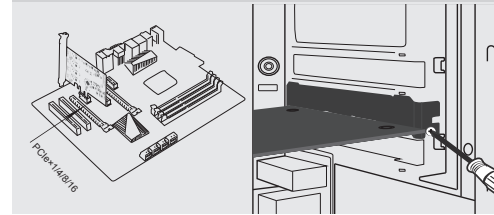
|                |  |
|----------------|--|
| Item name:     | PCIe1x1 to 4-port Type-C GEN1 interface extension card |
| Support:       | Mobile hard disk drive                                 |
| Interface:     | PCIe X1 is compatible with x4/x8/ X16 card slots       |
| Connector:     | Type - C GEN1 5Gbps bandwidth                          |
| power supplys: | PCIe interface +15Pin SATA dual power supply interface |
| Size:          | 116(L)*120(W)*18.6(H) MM                               |
| System:        | Windows7/8/10/Linux                                    |

----- ① -----

### Quick Installation Guide

Installation

1. Insert express card to PCIe1x4/8/16 slot on motherboard;
2. Fix full profile bracket with tower panel of PC.

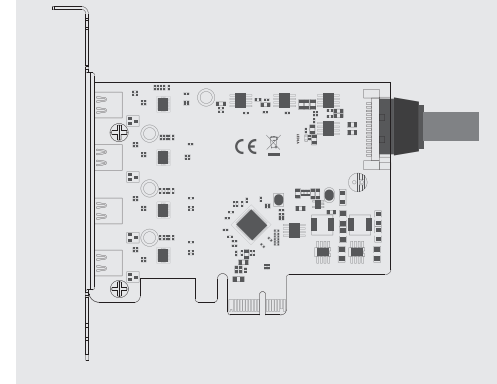


----- ② -----

### Quick Installation Guide

Installation

3. Connect 15pin SATA power cable with motherboard and

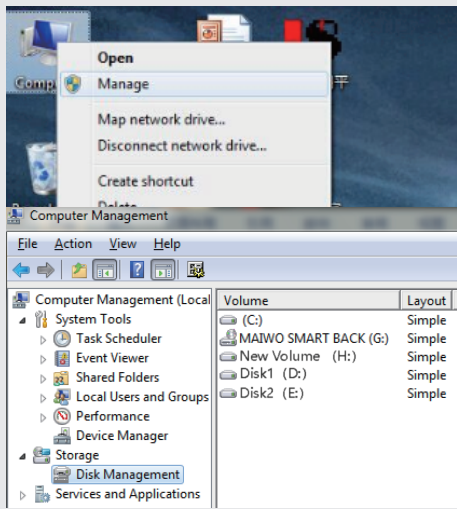


----- ③ -----

Note: Initialize the partitioned hard disk step when the USB interface is connected to the new removable hard disk

#### I、New hard disk format:

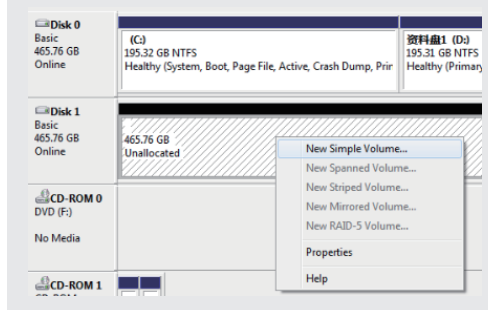
1. View "computer-Management-disk management" to Find the New disk.



----- ④ -----

#### II、New hard disk format:

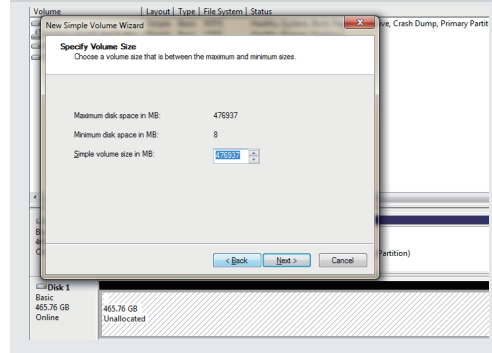
2. Right click the "External disk",then click "New simple Volume".



----- ⑤ -----

#### III、Hard disk partiti on:

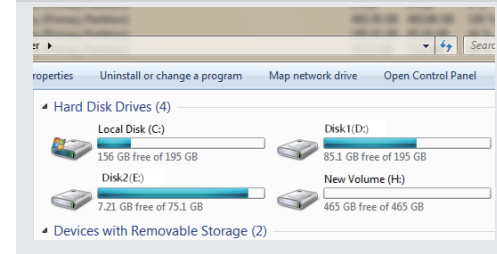
3. According to the instruction, choose the size of partition,then dick "Next" to finish.



----- ⑥ -----

#### IV、Hard disk partiti on:

4. Then you can find the new hard disk in the "Computer", it's ready to be use.



#### initialization, partition and format

- 1.1 View "computer - Manage - disk management" to Find the new disk .
- Remark: There two types MBR and GPT. SSD capacity <=2T, please choose MBR, if more than 2T, choose GPT.
- 2.2 Right click the "Disk 1", then click "New Simple Volume".

----- ⑦ -----