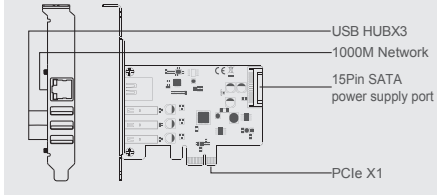


KC015 PCIe Card

Introduction

Product name:

MAIWO KC015 PCIe X1 to 3-port USB HUB+1000M network port expansion card



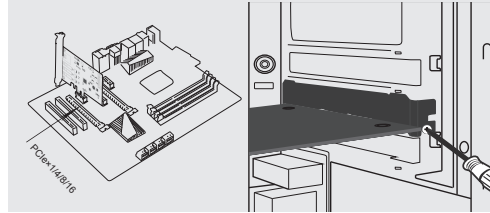
| | |
|----------------|---|
| Item name: | PCIe X1 to 3-port USB HUB+1000M network port expansion card |
| Support: | 3xUSB HUB 1000M network |
| Interface: | PCIe X1 is compatible with x4/x8/ X16 card slots |
| Connector: | Usb3.0-5gbps transmission bandwidth |
| Materials: | Metal ba se + glass fiber plate |
| power supplys: | PCIe interface +15Pin SATA dual power supply interface |
| Size: | 112(L)*120(W)*18.6(H) MM |
| System: | Windows7/8/10/Linux |

①

Quick Installation Guide

Installation

1. Insert express card to PCIex1/4/8/16 slot on motherboard;
2. Fix full profile bracket with tower panel of PC.

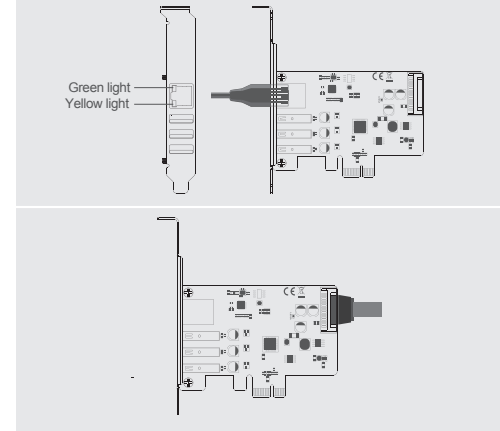


②

Quick Installation Guide

Installation

3. The network indicator light:green illuminate when power connected and flash yellow when transfer data
- 4.15pin SATA power cable ,ready for PCIe power is weak

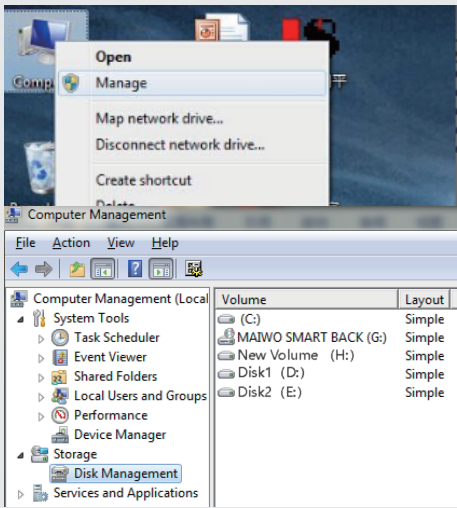


③

Note: Initialize the partitioned hard disk step when the USB interface is connected to the new removable hard disk

I. New hard disk format:

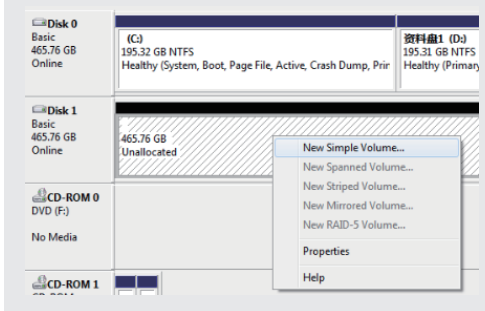
1. View "computer-Management-disk management" to Find the New disk.



④

II. New hard disk format:

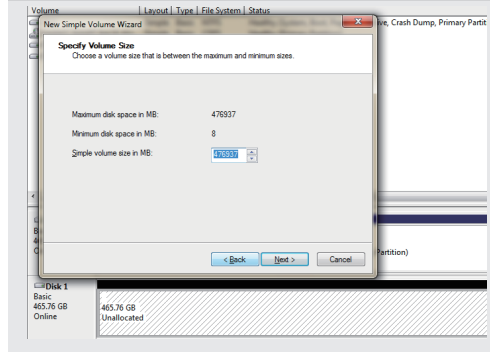
2. Right click the "External disk",then click "New simple Volume".



⑤

III. Hard disk partition:

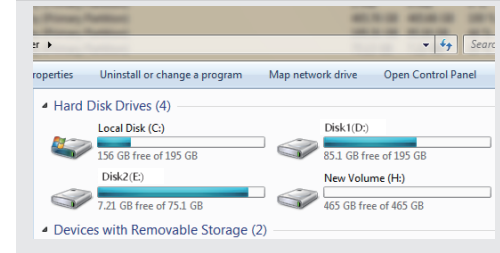
3. According to the instruction, choose the size of partition,then dick "Next" to finish.



⑥

IV. Hard disk partition:

4. Then you can find the new hard disk in the "Computer", it's ready to be use.



initialization, partition and format

- 1.1 View "computer - Manage - disk management" to Find the new disk .
- Remark: There two types MBR and GPT. SSD capacity <=2T, please choose MBR, if more than 2T, choose GPT.
- 2.2 Right click the "Disk 1", then click "New Simple Volume".

⑦