

KC014 PCIe Card

### Introduction

**Product name:** MAIWO KC014 PCIe x4 to 2-port Type-C GEN2 interface extension card

|                |                               |
|----------------|-------------------------------|
| Product:       | USB3.2 Gen2 PCI Express Card  |
| Interface:     | PCIe 3.0 x4 to type C         |
| USB port:      | Type C x2                     |
| Speed:         | 10Gbps                        |
| Power:         | PCIe +15Pin SATA (subsidiary) |
| Compatibility: | Windows 7/8/10/Linux          |

----- ① -----

### Quick Installation Guide

**Installation**

1. Insert express card to PCIe x4/8/16 slot on motherboard;
2. Remark: make sure that motherboard include PCIe x4/x8/x16 slot one at least.

----- ② -----

### Quick Installation Guide

**Installation**

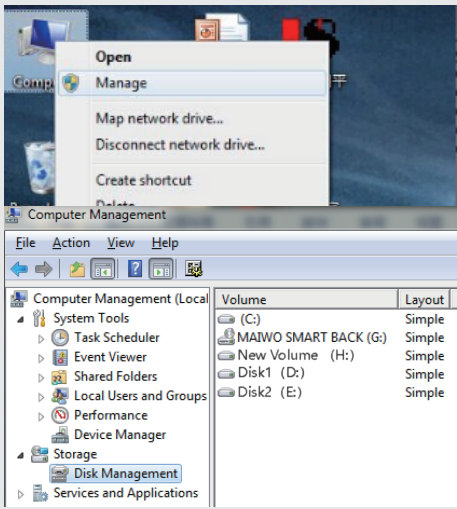
3. Connect 15pin SATA power cable with motherboard an dexpress card

----- ③ -----

Note: Initialize the partitioned hard disk step when the USB interface is connected to the new removable hard disk

### I. New hard disk format:

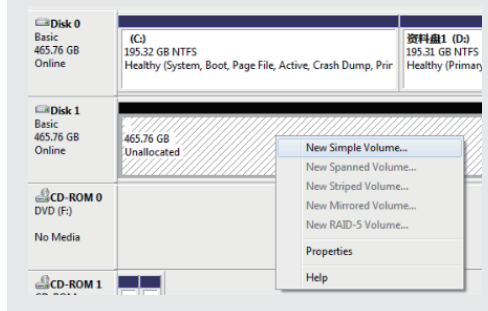
1. View "computer-Management-disk management" to Find the New disk.



----- ④ -----

### II. New hard disk format:

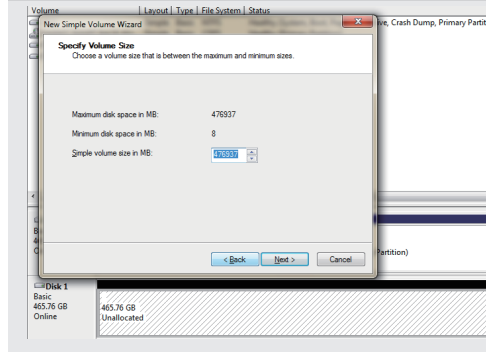
2. Right click the "External disk", then click "New simple Volume".



----- ⑤ -----

### III. Hard disk partition:

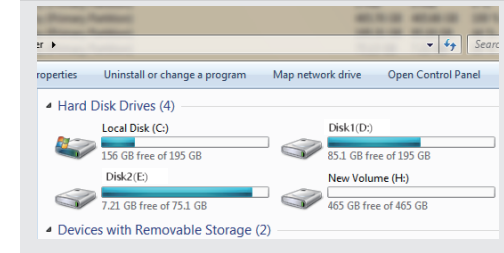
3. According to the instruction, choose the size of partition, then click "Next" to finish.



----- ⑥ -----

### IV. Hard disk partition:

4. Then you can find the new hard disk in the "Computer", it's ready to be use.



### initialization, partition and format

- 1.1 View "computer - Manage - disk management" to Find the new disk .
- Remark: There two types MBR and GPT. SSD capacity <=2T, please choose MBR, if more than 2T, choose GPT.
- 2.2 Right click the "Disk 1", then click "New Simple Volume".

----- ⑦ -----