

KC005A PCIe Card

Introduction

Product name: MAIWO KC005A desktop computer USB3.0 Converter

Item name:	USB3.0 PCIe Card
USB port	USB-A*4
Interface:	PCIe X1 is compatible with x4/x8/ X16 card slots
Connector:	USB3.0-5gbps transmission bandwidth
Materials:	Aluminum full profile bracket
power supply:	PCIe interface +15Pin SATA dual power supply interface
Size:	115(L)*120(W)*18.6(H) MM
System:	windows2000/XP/7/8/10/ Linux

----- ① -----

Quick Installation Guide

Installation

1. Insert express card to PCIe1/4/8/16 slot on motherboard;
2. Fix full profile bracket with tower panel of PC.

----- ② -----

Quick Installation Guide

Installation

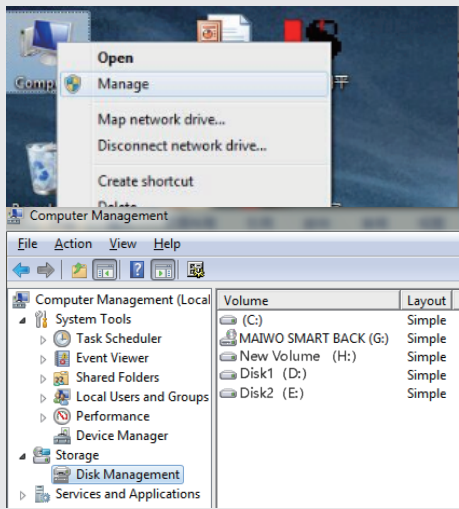
3. When PCIe power supply is insufficient, the auxiliary power supply of 15PinSATA line can be connected

----- ③ -----

Note: Initialize the partitioned hard disk step when the USB interface is connected to the new removable hard disk

I、New hard disk format:

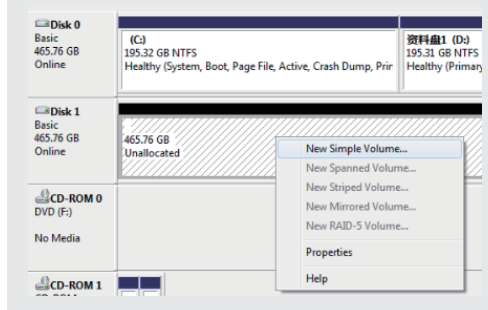
1. View "computer - Manage - disk management" to Find the new disk .



----- ④ -----

II、New hard disk format:

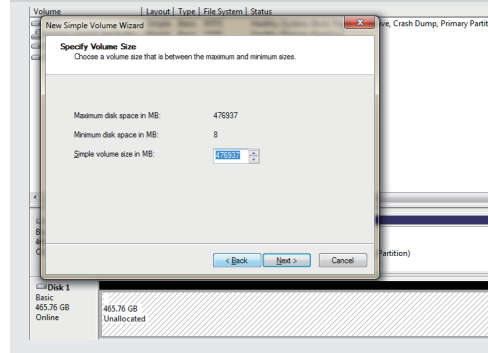
2. Right click the " External disk ", then click "New Simple Volume".



----- ⑤ -----

III、Hard disk partition:

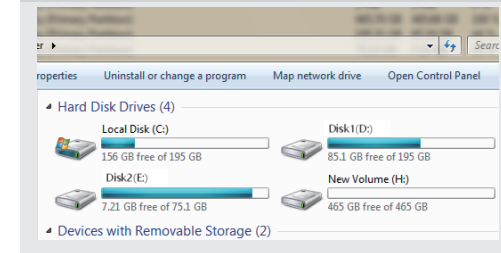
3、According to the instruction, choose the size of partition, then click "Next" to finish.



----- ⑥ -----

IV、Hard disk partition:

4、Then you can find the new hard disk in the "Computer", it's ready to be use.



initialization, partition and format

- 1.1 View "computer - Manage - disk management" to Find the new disk .
- 2.2 Right click the "Disk 1", then click "New Simple Volume".

----- ⑦ -----