

K3016SD M.2-SSD Docking

Specification

Product name
MAIWO USB3.1 Gen2 M2 SSD docking with SD card reader

- PC Type-C
- Power Type-C
- Power switch
- Power LED
- B+M Key SATA M2
- M-key NVMe M2 Disk LED
- SD memory LED
- SD express slot

Name	MAIWO USB3.1 Gen2 M2 SSD docking with SD express card reader
Interface	Type-C to M.2
Support SSD	B+M Key(SATA); M-key/B+M key(NVMe);
Support SD	SD Express and down compatibility
USB speed	10Gbps
Rating	5V, 3A
Feature	External storage and SD card reader
Compatible	Windows XP/7/8/8.1/10, MAC OS
Unit size	79(L)X76(W)X18(H)MM
LED	Power(green), disks(white), SD(white)

①

Attention!

Check the connector icon and SSD label match before assembling SSD, can not work if assemble wrong SSD

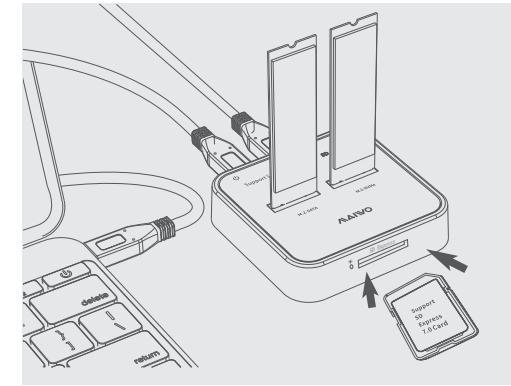


②

Quick Installation Guide

2. PC mode (Read and Write)

- 2.1. External storage
 - a. Insert M.2 SSD to correct SSD slot
 - b. Connect USB cable with docking and PC/NB
 - c. Connect power type C with docking and AC adapter
 - d. Press power switch one time, power and disks LED will illuminate following
- 2.2. SD card reader
 - a. Insert SD memory card to slot
 - b. Connect USB cable with docking and PC/NB
 - c. Connect power type C with docking and AC adapter
 - d. Press the power switch one time, then SD LED will illuminate following

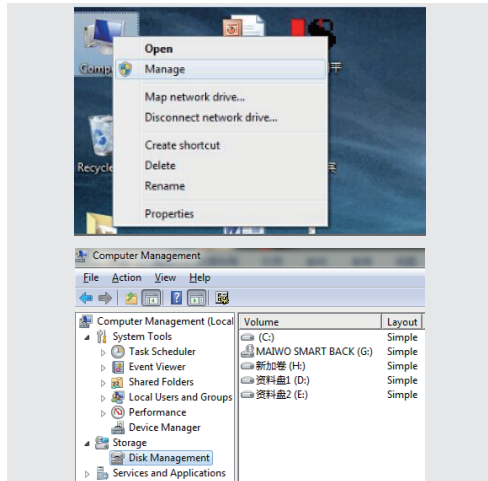


③

Operation Guide

2. New hard drive format

2.1 View "Computer-Management" to find the new disk.



④

Operation Guide

2. New hard drive format

2.2. Right click the "Disk 1" then click "New Simple Volume".

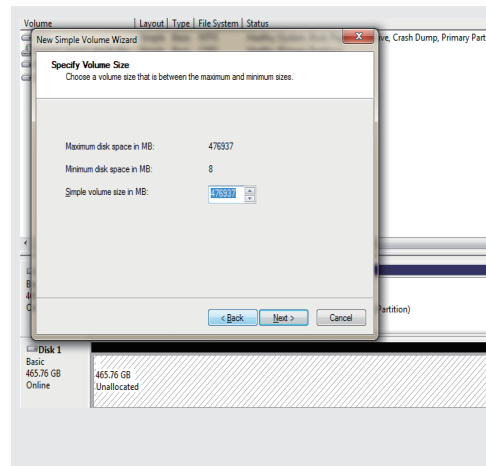


⑤

Operation Guide

2. New hard drive format

2.3. According to the instruction, choose the size of partition then click "Next" to finish.

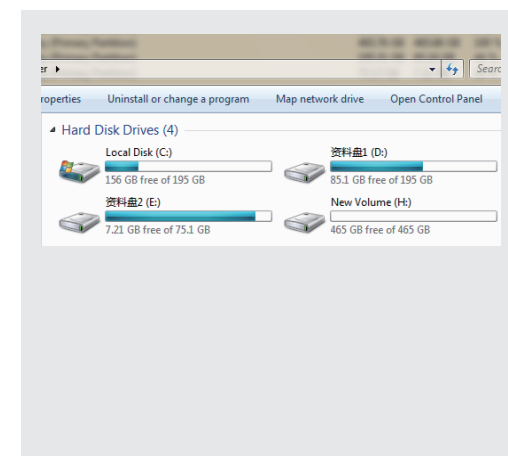


⑥

Operation Guide

2. New hard drive format

2.4 Then you can find the new hard disk in the "computer", it's ready to be use.



⑦