

K3015M5 5 Bay M.2 SATA Duplicator

Specification

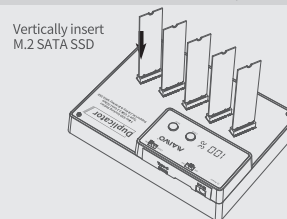
Product Name	MAIWO 5 Bay M.2 SATA Duplicator
Model	K3015M5
Support Drive	M.2 SATA(B-KEY, B+M KEY)
External Interface	Type-C
Material	ABS High Strength Engineering Plastic
Function	1:4 Drives Offline Clone, DataTransfer
Size	163X125X41MM
Operation System	Windows, Mac OS, Linux
LED Indicator	SSD LED is blue, flash when read and write. Power Indicator is blue.

①

Installation

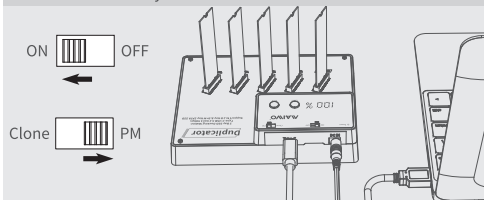
1. Hard drive read and write:

1.1. Insert M.2 SATA SSD into the slot of duplicator.



1.2. Connect duplicator and PC with data cable, then Switch to PM mode.

1.3. Connect the power supply to the duplicator, open the power switch, then the PC will find the drive and install USB driver automatically.



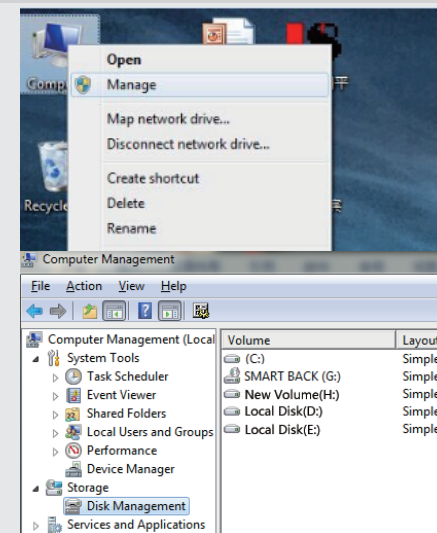
Note: If your drive is a used one, your PC will find the drive and read&write normally. If your drive is new, please initialize, partition and then create a new partition before use it.

②

Installation

2. New hard drive format:

2.1. View "Computer - Manage - Disk Management" to find the new disk .

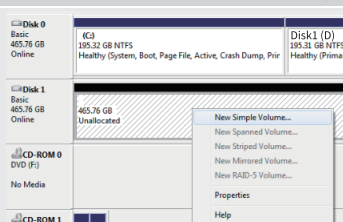


③

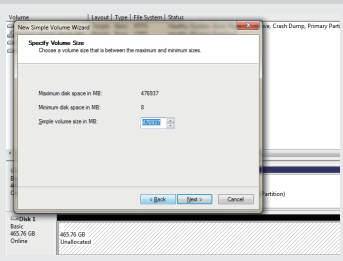
Installation

2. New hard drive format:

2.2. Right click the "Disk 1", then click "New Simple Volume".



2.3. According to the instruction, choose the size of partition, then click "Next" to finish.

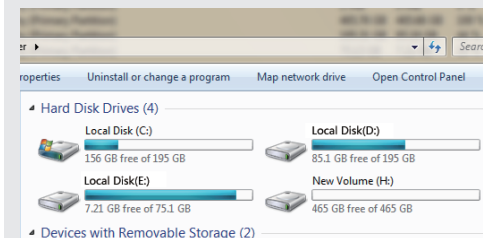


④

Installation

2. New hard drive format:

2.4. Then you can find the new hard disk in the "Computer", it's ready to be use.

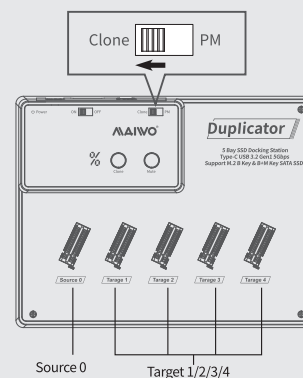


⑤

Operation Guide

3. Clone:

3.1. Insert your Source Drive into Source 0, and your Target Drive into Target 1(or 2/3/4), switch the duplicator to Clone Mode.
 ((Note: Do not connect duplicator to your device when clone, and please make sure the capacity of your Target Drive is bigger than Source Drive.))

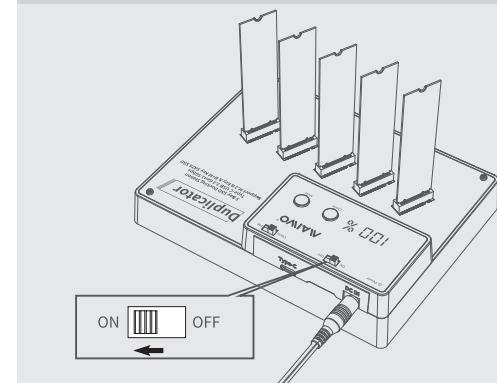


⑥

Operation Guide

3. Clone:

3.2. Open the power switch, the blue power indicator will light up. Wait until SSD LED lights up, then press the Clone Button for 5-8 seconds, the Clone Progress LED Indicator will display 0%-100% until clone is done.



⑦