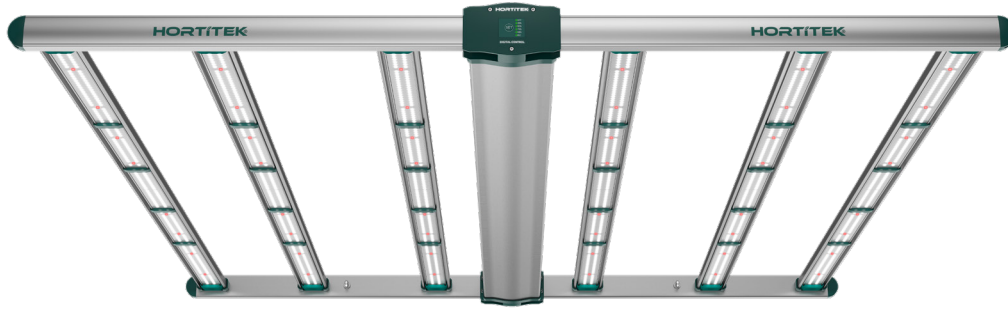


## SIX BAR



### PRODUCT SPECIFICATIONS

Product Code		M4444
Power		620W
Voltage Range / Frequency		100-277V ~ 50/60Hz
Current	Amp @ 120V:	5.45A
	Amp @ 208V:	3.0A
	Amp @ 220V:	2.85A
	Amp @ 230V:	2.75A
	Amp @ 240V:	2.65A
	Amp @ 277V:	2.30A
PPF Efficacy		2.5µmol/J
Max PPF		1550µmol/s
CCT		4000K
CRI		85%
PF		>0.95
THD		<10%
Beam Angle		120°
Control Panel		OFF / 25% / 50% / 75% / 100% / RC
External Control		Compatible with 0-10V LED Controllers
Signal Cable		3.5mm TRS Male Jumper Cable
Thermal Management		Passive
BTU/h		2116
Protection		Over-Voltage, Open Circuit, Short Circuit
Dimensions		1175x1172x67mm   46.3x46.1x2.6"
Weight		11kg±0.3kg   24.2±0.66 lbs
Working Temperature		0°C to 40°C / 32°F to +104°F (95% RH)
Storage Temperature		-40°C to 70°C / -40°F to +158°F (85% RH)
IP Rating		IP65

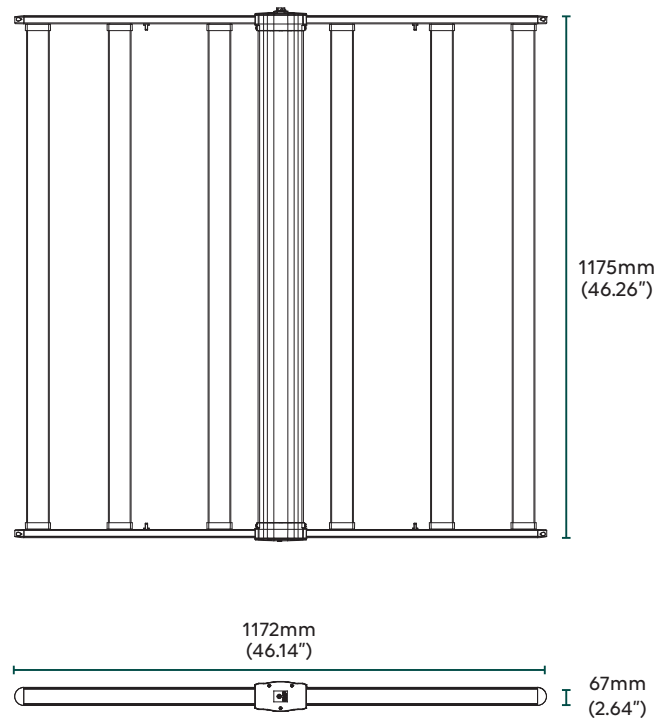
### COVERAGE AREA

LIGHT COVERAGE AREA			
Application	Vegetative	Flower	
<sup>1</sup> Hanging Height (cm)	70	30	20
Max PPF (µmol/s/m²)	500	850	1000
Coverage Dimensions (m)	1.88 X 2.02	1.30 X 1.50	1.25 X 1.45
<sup>2</sup> Coverage Area (m²)	3.80	1.95	1.82

<sup>1</sup>Hanging Height refers to the distance between the plant canopy and the LED.

<sup>2</sup>Coverage Area refers to the region that the plants receive at minimum 200PPFD for Flowering and 100PPFD for Vegetative.

### DIMENSIONS (mm/inch)



**3 YEAR WARRANTY**  
hortitek.com