

Manufacturer:
Sparmed ApS/CVR.No.: 30898575
Ryttermarken 2, 3520 Farum, Denmark



ID: COA-07603

Certificate of Analysis

Date of issue: 19.02.2016

Product ID: Oosafe® Plasticware: OOPW-ST03

LOT No.: 07603

Expiry Date: 09/2020

Storage conditions: 20⁰C, dry room, no exposal to sun-light

Quality Assurance:

Proven non-embryotoxic by Mouse Embryo Assay Test. 100% embryo development to the expanded blastocyst stage within 96hours. **PASS**
Proved stable human sperm motility: ≥70% sperm motility after 24hours proven. **PASS**
Proven non-toxic by Limulus Amebocyte Lysate (LAL) test. Pass criteria <0.03 EU/device **PASS**
Proven RNase DNase test FREE- **PASS**
Sterilization by gamma irradiation. Delivered irradiation dose: 8.6kGy-9.5kGy. Specified irradiation dose: 8.0kGy-10.0kG- **PASS**

Quality control according to the ISO 13485:2012

Final approval:

A handwritten signature in blue ink, appearing to read 'Katrine Nobel'.

Katrine Nobel
Quality Control Manager

Stamp:





SparMED Aps
Toppevadvej 34-38
DK-3660
Stenlose, Denmark



ELI Accession Number: SPAR-3862(R1)-1115

Date of completion: 11-27-2015

Lot number: 07603

Reference number: OOPW-ST03

Description of test article(s): Oosafe® 60mm Dish

Assay system requested by customer: 1mL of culture medium was placed in the test article. 1-cell mouse embryos were then added to the test article and cultured for 96-hours.

Control assay method and results: 15 1-cell (B₆C₃F₁ X B₆D₂F₁) embryos were cultured in 1mL drops in a non-treated 4-Well Dish using culture medium:

15 / 15 (100 %)

1-cell to 2-cell within 24 hr

15 / 15 (100 %)

1-cell to expanded blastocyst within 96 hr

For a valid assay, Embryotech™ requires at least 70% of 1-cell stage control embryos to develop to expanded blastocyst within 96-hours.

Test assay method and results: 21 1-cell (B₆C₃F₁ X B₆D₂F₁) embryos were cultured in one of the test articles using the culture medium from the other test article:

20 / 21 (95 %)

1-cell to 2-cell within 24 hr

18 / 21 (86 %)

1-cell to expanded blastocyst within 96 hr

Summary of observations: All test and control embryos were selected randomly from a common pool of freshly collected embryos and were cultured in the same incubator at 37°C and 5.0% CO₂. 100 percent of the control embryos developed to the expanded blastocyst stage within 96-hours. 86 percent of the embryos cultured in the test article developed to the expanded blastocyst stage within 96-hours.

signature
Study Director

11-30-2015
date

signature
Quality Reviewer

11/30/2015
date



SparMED Aps
 Toppevadvej 34-38, DK-3660
 Stenlose, Denmark



140 Hale Street
 Haverhill, MA 01830
qc@embryotech.com

ELI Accession Number: S2294-1115SPAR

Date of completion: 11-20-2015

Lot number: 07603

Order number: OOPW-ST03

Description of test article(s): Oosafe® 60mm Dish

Assay system requested by customer: 1mL of sperm wash medium was added to the test articles (10 test articles pooled) for 30 minutes. Post incubation the sperm wash medium from the test articles was pooled and 200µl of the medium was added to the 4-well with the sperm for 24-hour incubation.

Test Assay method and results: A non-frozen donor sperm specimen was obtained and used for this assay. The sperm was prepared and the motile fraction separated using a sperm gradient and centrifuge cycle. The motility was noted at the beginning of the assay and again at 24-hours using a measure depth Makler Chamber System. Analyses were performed in sequence each time, with no more than 5-minutes between the test and the control samples.

Results:

Test method: SOP/TSG/ELI/008 Specification Initial Result % 24hr SMI Value Pass/Fail

Test Article	Specification	Initial	Result % 24hr	SMI Value	Pass/Fail
Test Article	SMI ≥ 0.75	92%	92%	1.00	Pass
Control	≥ 70%	92%	92%	N/A	Pass

Summary of observations: The motility remained consistent in the test article extract and control while in an incubator atmosphere of 32°C and 5% CO₂. Neither the test nor the control showed any signs that the motility was affected during the course of the assay.


 signature
 Study Director

11-20-2015
 date


 signature
 Quality Reviewer

11-20-2015
 date



SparMED Aps
 Toppevadvej 34-38
 DK-3660
 Stenlose, Denmark



140 Hale Street
 Haverhill, MA 01830
qc@embryotech.com

ELI Accession Number: E6693-1115SPAR

Date of completion: 11-18-2015

Lot number: 07603

Order number: OOPW-ST03

Description of test article(s): Oosafe® 60mm Dish

Assay system requested by customer: Endotoxin titer and interference screening using the Gel-Clot method.

LAL lot number: 515-05-733

Sensitivity (λ) = 0.03 EU/mL

CSE lot number: 143

LRW lot number: AYE162370

Control Standard Series			Test Sample Dilutions	NPC		PPC	
2 λ .06	+	+	Undiluted	-	-	+	+
λ .03	+	+	1:2	-	-	+	+
$\frac{1}{2}\lambda$.015	-	-	1:4	-	-	+	+
$\frac{1}{4}\lambda$.0075	-	-	1:8	-	-	+	+
NWC	-	-	1:16	-	-	+	+

Summary of observations: The error for the Gel-Clot assay is +/- one two-fold dilution. The test article in this assay indicates an Endotoxin Concentration of < 0.03 EU/device.


 signature
 Study Director

11-20-2015
 date


 signature
 Quality Reviewer

11-20-2015
 date

RNase Test Data and Results

Date: 12/07/2015
Company: Sparmed ApS
Date received: 12/01/2015

Project #: 113288A
Contact: Onur Ozturk
Technician: Chase Wong

PO#: 130214-1
Phone: 45- 39 40 2503

Products tested:	Product code:	Lot #:
Oosafe 4-WELL DISH	OOPW-FW04	07603
Oosafe 35 MM DISH	OOPW-TF03	07603
Oosafe 60MM DISH	OOPW-ST03	07603
Oosafe CENTER WELL	OOPW-CW05	07603
Oosafe ICSI DISH	OOPW-IC03	07603
Oosafe 100 MM DISH	OOPW-HD10	07603
Oosafe 60MM DISH	OOPW-ST01	07506
Oosafe 35 MM DISH	OOPW-TF02	07603
Oosafe 15 mL tube	OOPW-CT01	07603
Oosafe ICSI DISH	OOPW-IC01	07506

Extraction:

Extract solution: DEPC Treated Water
Lot #: DW15A6
Volume: 1000µl

Number of test items exposed to extract solution: 10
Special extraction instructions: Tested products according to extraction protocol #155.

Procedure and Controls:

RNA: 6.0 kb Poly (A)-tailed
RNA lot #: 1310020
Salts: MgCl₂ and NaCl
Salt lot #: S15G2

RNA standard pool: 3µl of RNA + 12µl Salts.
Volume of each standard reaction: 5µl
Volume of extract added to the standard: 10µl
Total volume: 15µl

Negative Control (-): RNA and salt standards with 10 µl of unexposed extract solution added

Positive Control (+): RNA and salt standards with 10 µl of extract solution exposed to RNase from a tip touched by un-gloved hands

Incubation periods: 1 hr @ 37°C, followed by 5 minutes at 65°C

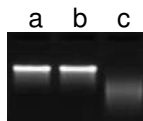
Gel Electrophoresis:

2µl gel loading dye + 15µl reaction is loaded on a 1.2% agarose in ½ X TAE gel

Gel loading dye lot #: DD006

Electrophoresis: 20 minutes @ 80 volts

Photographic Results:



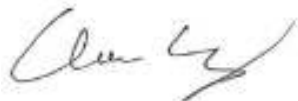
Lane (a) product samples, (b) unexposed RNA standard as a negative control, (c) RNA standard exposed to RNase as a positive control.

Conclusions:

There is no visible degradation in lanes (a) and (b). Lane (a) represents the product samples and lane (b) represents the negative control. Lane (c), which represents the RNA standard, exposed to RNase as a positive control shows degradation of the RNA. The results suggest that the product sample is free of detectable RNase contamination.

Recommendations:

Based on this experimental procedure, we can show a definite risk of RNase contamination if your product is touched by un-gloved hands. We suggest that all operations are monitored and personnel are instructed in the importance of avoiding RNase contamination.



Chase Wong
Lab Technician

12/08/2015
Date



Carl Tsang
Q.A.

12/08/2015
Date



Saving You Time For Life

MO BIO Laboratories | www.mobio.com | Tel. 800-606-6246 | 2746 Loker Avenue West, Carlsbad, CA 92010

RNase FREE CERTIFICATE OF ANALYSIS

12/08/2015

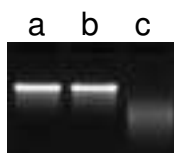
The following sample obtained from **Sparmed ApS** on **12/01/2015** is free of any detectable RNase contamination.

<u>PRODUCTS TESTED</u>	<u>PRODUCT CODE</u>	<u>LOT NUMBER</u>
Oosafe 4-WELL DISH	OOPW-FW04	07603
Oosafe 35 MM DISH	OOPW-TF03	07603
Oosafe 60MM DISH	OOPW-ST03	07603
Oosafe CENTER WELL	OOPW-CW05	07603
Oosafe ICSI DISH	OOPW-IC03	07603
Oosafe 100 MM DISH	OOPW-HD10	07603
Oosafe 60MM DISH	OOPW-ST01	07506
Oosafe 35 MM DISH	OOPW-TF02	07603
Oosafe 15 mL tube	OOPW-CT01	07603
Oosafe ICSI DISH	OOPW-IC01	07506

Product was tested for RNase activity by the following protocol:

Product was extracted in RNase free water. The extract was then added to an RNA standard. The RNA standard was incubated at 37° C for 1 hour then heated to 65° C for 5 minutes. RNA samples were then run on an agarose gel, photographed, and evaluated for degradation.

FIGURE 1.



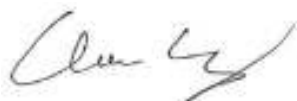
Lane (a) **product samples**, (b) unexposed RNA standard as a negative control, (c) RNA standard exposed to RNase as a positive control.

Conclusions:

No visible degradation is present in the product sample. The product can therefore be considered RNase free.

Comments:

The Test Sensitivity is 10^{-9} Kunitz Units/ μ l.



Certified by: Chase Wong, 12/08/2015



Q.A. Carl Tsang, 12/08/2015

DNase Test Data and Results

Date: 12/07/2015
Company: Sparmed ApS
Date Received: 12/01/2015

Project #: 113288B
Contact: Onur Ozturk
Technician: Chase Wong

PO#: 130214-1
Phone: 45- 39 40 2503

Products tested:	Product code:	Lot #:
Oosafe 4-WELL DISH	OOPW-FW04	07603
Oosafe 35 MM DISH	OOPW-TF03	07603
Oosafe 60MM DISH	OOPW-ST03	07603
Oosafe CENTER WELL	OOPW-CW05	07603
Oosafe ICSI DISH	OOPW-IC03	07603
Oosafe 100 MM DISH	OOPW-HD10	07603
Oosafe 60MM DISH	OOPW-ST01	07506
Oosafe 35 MM DISH	OOPW-TF02	07603
Oosafe 15 mL tube	OOPW-CT01	07603
Oosafe ICSI DISH	OOPW-IC01	07506

Extraction:

Extract solution: DEPC Treated Water
Lot #: DW15A6
Volume: 1000µl

Number of test items exposed to extract solution: 10
Special extraction instructions: Tested products according to extraction protocol #155.

Procedure and Controls:

DNA: 1 kb Ladder
DNA lot #: 1506872
Salts: MgCl₂ and NaCl
Salt lot #: S15G2

DNA standard pool: 3µl of DNA + 12µl Salts.
Volume of each standard reaction: 5µl
Volume of extract added to the standard: 10µl
Total volume: 15µl

Negative Control (-): DNA and salt standards with 10 µl of unexposed extract solution added

Positive Control (+): DNA and salt standards with 10 µl of extract solution exposed to DNase from a tip exposed to human saliva

Incubation periods: 1 hr @ 37°C, followed by 5 minutes at 65°C

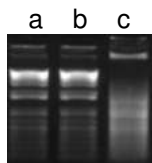
Gel Electrophoresis:

2µl gel loading dye + 15µl reaction is loaded on a 1.2% agarose in ½ X TAE gel

Gel loading dye lot #: DD006

Electrophoresis: 30 minutes @ 80 volts

Photographic Results:



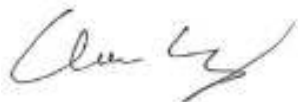
Lane (a) product samples, (b) unexposed DNA standard as a negative control, (c) DNA standard exposed to DNase as a positive control.

Conclusions:

There is no visible degradation in lanes (a) and (b). Lane (a) represents the product samples and lane (b) represents the negative control. Lane (c), which represents the DNA standard, exposed to DNase as a positive control shows degradation of the DNA. The results suggest that the product sample is free of detectable DNase contamination.

Recommendations:

Based on this experimental procedure, we can show a definite risk of DNase contamination if your product is exposed to saliva. We suggest that all operations are monitored and personnel are instructed in the importance of avoiding DNase contamination.



Chase Wong
Lab Technician

12/08/2015
Date



Carl Tsang
Q.A.

12/08/2015
Date



Saving You Time For Life

MO BIO Laboratories | www.mobio.com | Tel. 800-606-6246 | 2746 Loker Avenue West, Carlsbad, CA 92010

DNase FREE CERTIFICATE OF ANALYSIS

12/08/2015

The following sample obtained from **Sparmed ApS** on **12/01/2015** is free of any detectable DNase contamination.

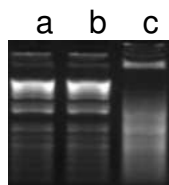
<u>PRODUCTS TESTED</u>	<u>PRODUCT CODE</u>	<u>LOT NUMBER</u>
Oosafe 4-WELL DISH	OOPW-FW04	07603
Oosafe 35 MM DISH	OOPW-TF03	07603
Oosafe 60MM DISH	OOPW-ST03	07603
Oosafe CENTER WELL	OOPW-CW05	07603
Oosafe ICSI DISH	OOPW-IC03	07603
Oosafe 100 MM DISH	OOPW-HD10	07603
Oosafe 60MM DISH	OOPW-ST01	07506
Oosafe 35 MM DISH	OOPW-TF02	07603
Oosafe 15 mL tube	OOPW-CT01	07603
Oosafe ICSI DISH	OOPW-IC01	07506

Product was tested for DNase activity by the following protocol:

Product was extracted in DNase free water. The extract was then added to a DNA standard.

The DNA standard was incubated at 37° C for 1 hour then heated to 65° C for 5 minutes. DNA samples were then run on an agarose gel, photographed, and evaluated for degradation.

FIGURE 1.



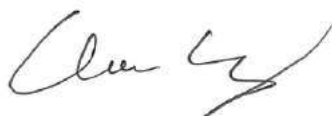
Lane (a) **product samples**, (b) unexposed DNA standard as a negative control, (c) DNA standard exposed to DNase as a positive control.

Conclusions:


No visible degradation is present in the product sample. The product can therefore be considered DNase free.

Comments:

The Test Sensitivity is 10^{-7} Kunitz Units/ μ l.



Certified by: Chase Wong, 12/08/2015



Q.A. Carl Tsang, 12/08/2015