

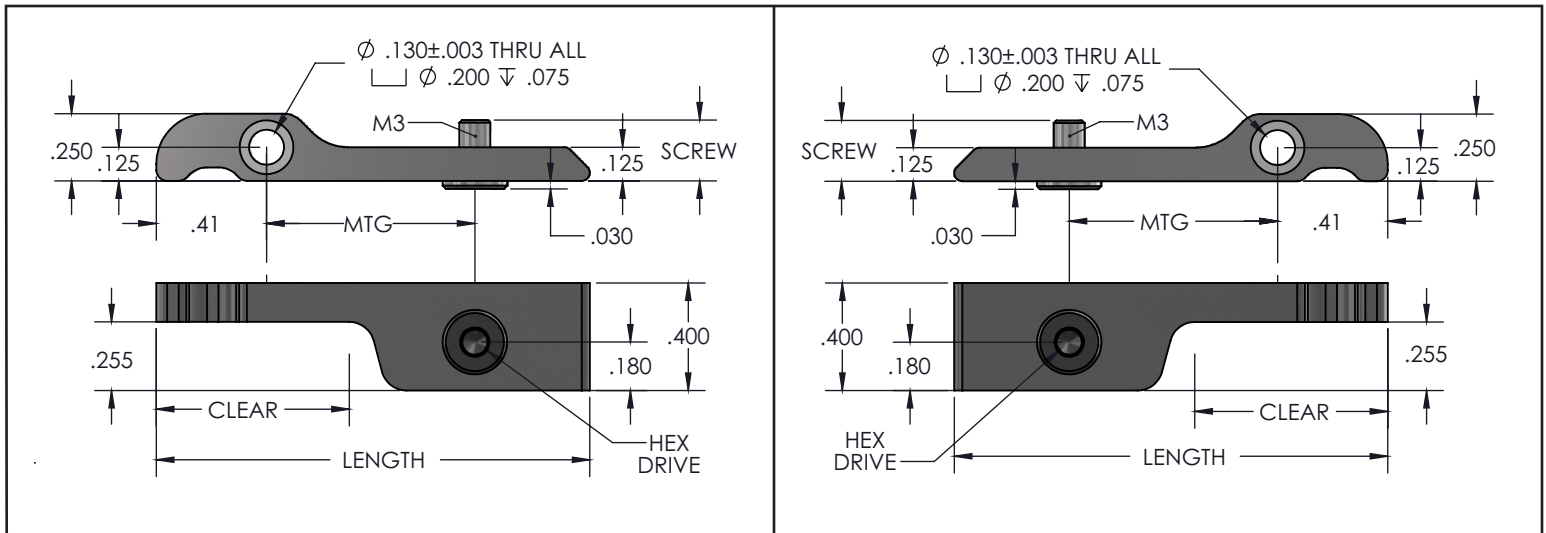
PART NUMBER BUILDER

HKE - 332E - R162 - BA - 250

HEX KEY EJECTOR	HEX DRIVE <small>OPTIONAL EXTENDED THREAD BLANK IS STANDARD</small>		LENGTH 1.97" LENGTH - 1.97" 1.62" LENGTH - 1.62" (OR SPECIFY DESIRED LENGTH)	FINISH	MOUNTING HARDWARE .250" STD (OPTIONAL) INCLUDES SLEEVE & SCREW - .1875" - .250" - .3125"

BLACK ANODIZE PER MIL-A-8625, TYPE II, CLASS 2 - BA
 HARD BLACK ANODIZE PER MIL-A-8625, TYPE III, CLASS 2 - BH
 CHEMICAL FILM PER MIL-C-5541, CLASS 1A, CLEAR - CC
 CHEMICAL FILM PER MIL-C-5541, CLASS 1A, GOLD, NON-ROHS - CG
 ELECTROLESS NICKEL PER MIL-C-26074, CLASS 4, GRADE B, BRIGHT - EN

EXAMPLE PART NUMBERS



PART NUMBER:	M3 SCREW	LENGTH	MTG	CLEAR	PART NUMBER:	M3 SCREW	LENGTH	MTG	CLEAR
HKE-332-L162-XX-XXX	5.75MM	1.62"	0.775"	0.73"	HKE-332-R162-XX-XXX	5.75MM	1.62"	0.775"	0.73"
HKE-332E-L162-XX-XXX	7.0MM	1.62"	0.775"	0.73"	HKE-332E-R162-XX-XXX	7.0MM	1.62"	0.775"	0.73"
HKE-332-L197-XX-XXX	5.75MM	1.97"	1.125"	0.73"	HKE-332-R197-XX-XXX	5.75MM	1.97"	1.125"	0.73"
HKE-332E-L197-XX-XXX	7.0MM	1.97"	1.125"	0.73"	HKE-332E-R197-XX-XXX	7.0MM	1.97"	1.125"	0.73"

MATERIALS:

EJECTOR - ALUMINUM AL7075

SCREWS / SLEEVE - SS316 PASSIVATE AMS 2700



PLATING SPECS:

BA - BLACK ANODIZE, MIL-A-8625, TYPE II, CLASS 2 (STANDARD)

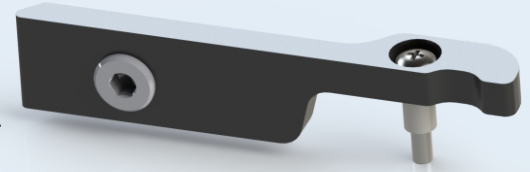
CC - CHEMICAL FILM, MIL-C-5541, CLASS 1A, CLEAR

CG - CHEMICAL FILM, MIL-C-5541, CLASS 1A, GOLD, NON-ROHS

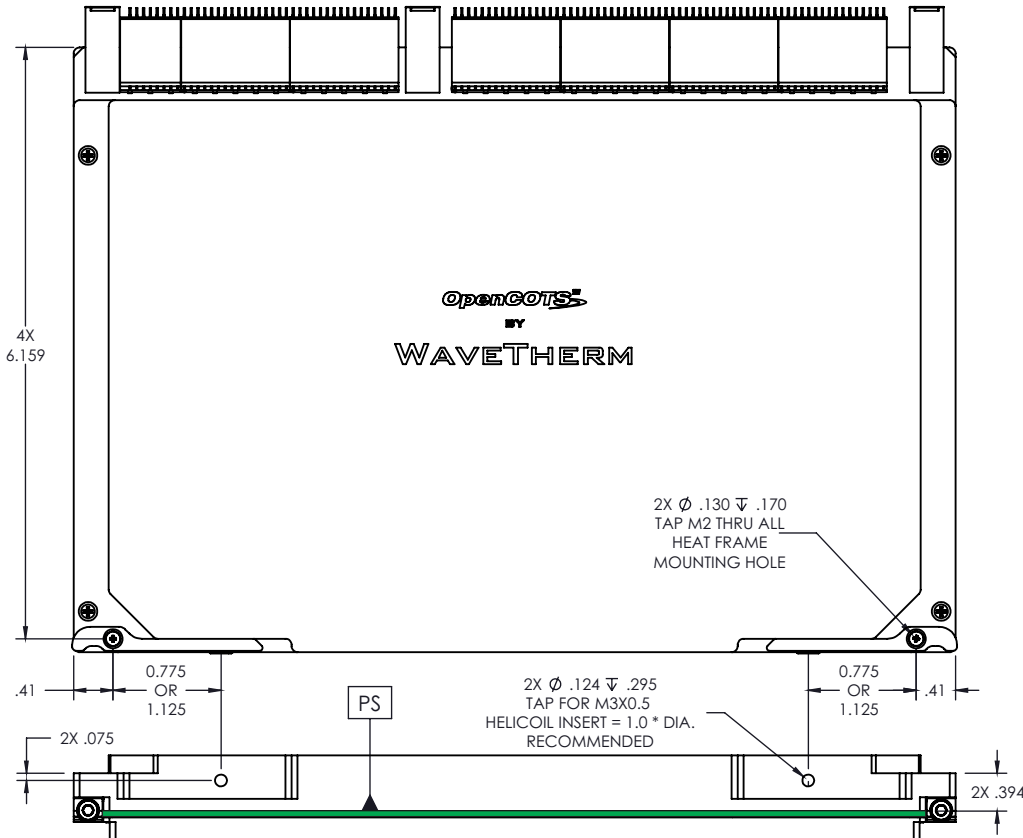
EN - ELECTROLESS NICKEL, MIL-C-26074, CLASS 4, GRADE B, BRIGHT

OPENCOTS 6U HEX DRIVE EJECTORS

- FIELD REPLACEABLE INJECT / EJECT HANDLES
- CPCI AND VME/VPX DESIGNS
- ERGONOMIC DESIGNS WHICH PROVIDE A 3.7 MECHANICAL ADVANTAGE ENTERING AND EXITING A CHASSIS SLOT.
- MAXIMUM INSERTION / EXTRACTION FORCE ~ 120LBS.



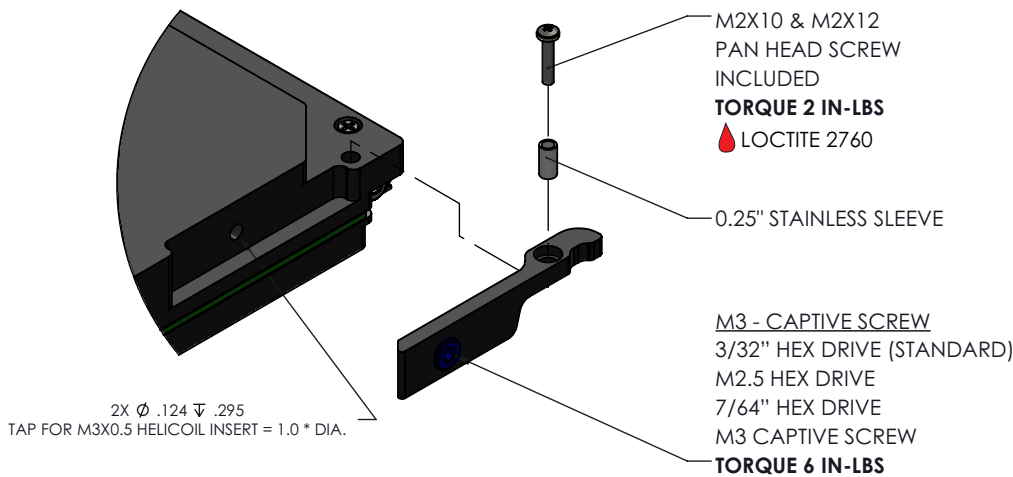
OPTIMIZED FOR VITA 48.2 AND CPCI



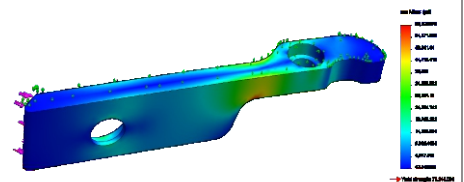
FEATURES:

- FIELD REPLACEABLE
- CAPTIVE SCREW
- INJECTION / EJECTION
- VITA 48.2 COMPLIANT
- VME COMPLIANT
- CPCI COMPLIANT
- LOW PROFILE DESIGN
- ERGONOMIC DESIGN
- 3.7X FORCE MULTIPLIER
- 3D MODELS AVAILABLE

EXPLODED VIEW



DESIGN - SIMULATE - TEST



3D-CAD
COMPLETE MODULE
ASSEMBLIES
AVAILABLE
FOR DOWNLOAD

