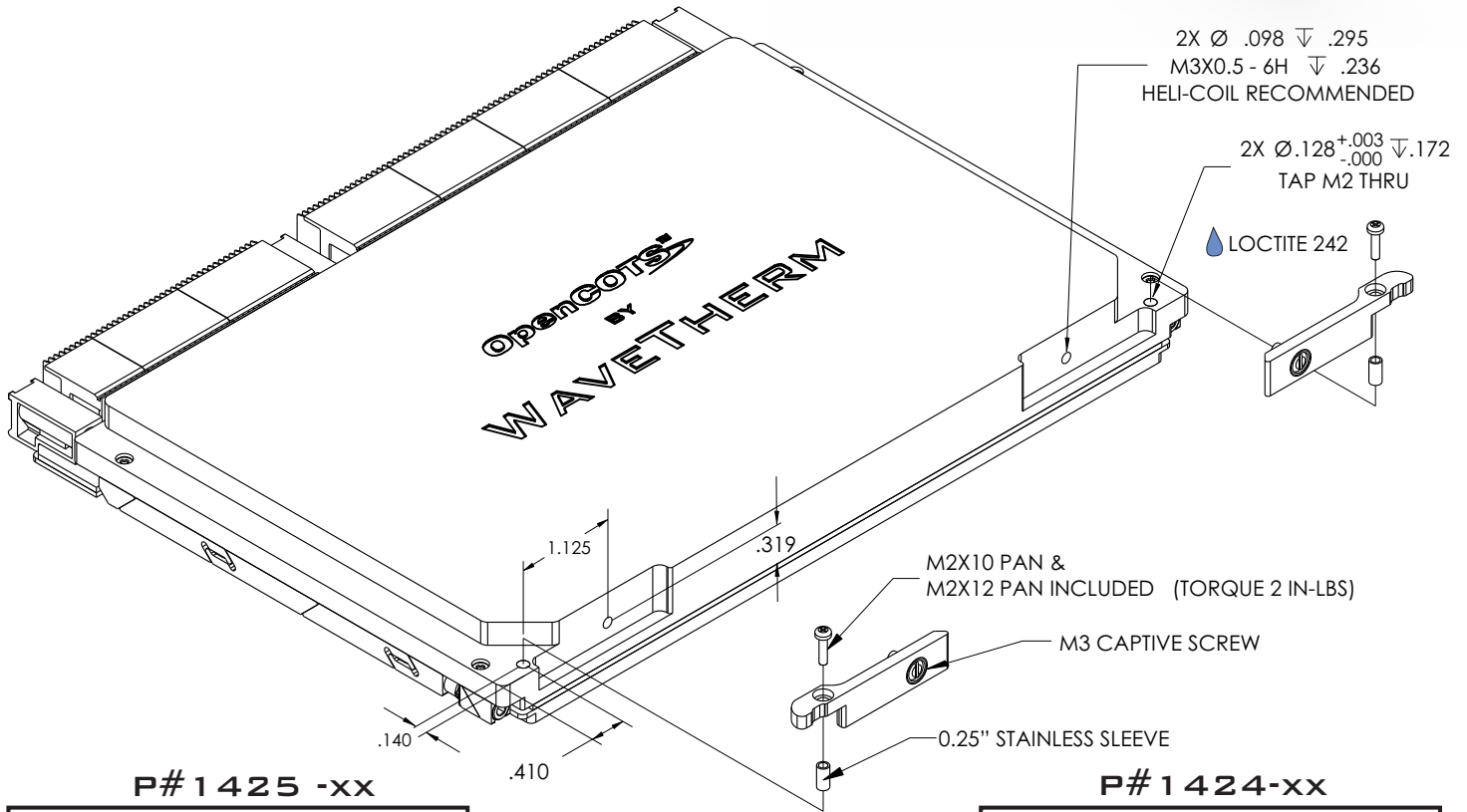


THE OPENCOTS 6U EJECTORS REPRESENT AN INNOVATIVE APPROACH TO CREATE A FIELD REPLACEABLE INJECT / EJECT HANDLE FOR GPCI AND VME/VPX DESIGNS. THE EJECTOR HANDLES ARE ERGONOMICALLY DESIGNED TO PROVIDE A MECHANICAL ADVANTAGE ENTERING AND EXITING A CHASSIS SLOT.

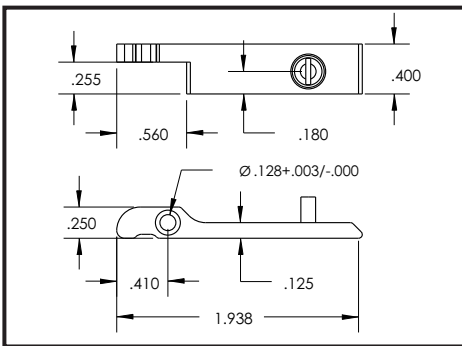


OpenCOTS™

OPTIMIZED FOR VITA 48.2 AND GPCI



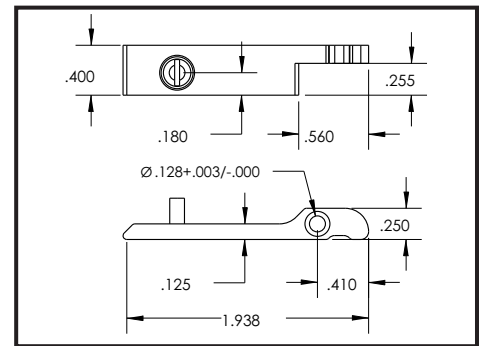
P# 1425 -XX



FEATURES:

- FIELD REPLACEABLE
- CAPTIVE SCREW
- INJECTION / EJECTION
- VITA 48.2 COMPLIANT
- VME COMPLIANT
- GPCI COMPLIANT
- LOW PROFILE DESIGN
- ERGONOMIC DESIGN
- 3D MODELS AVAILABLE

P# 1424 -XX



MATERIAL:

ALUMINUM AL6061-T6

HARDWARE SS300 SERIES

FINISH (-XX):

BA - BLACK ANODIZE PER MIL-A-8625, TYPE II, CLASS 2

BH - HARD BLACK ANODIZE PER MIL-A-8625, TYPE III, CLASS 3

CC - CHEMICAL FILM PER MIL-C-5541, CLASS 1A, CLEAR

CG - CHEMICAL FILM PER MIL-C-5541, CLASS 1A, GOLD, NON-ROHS

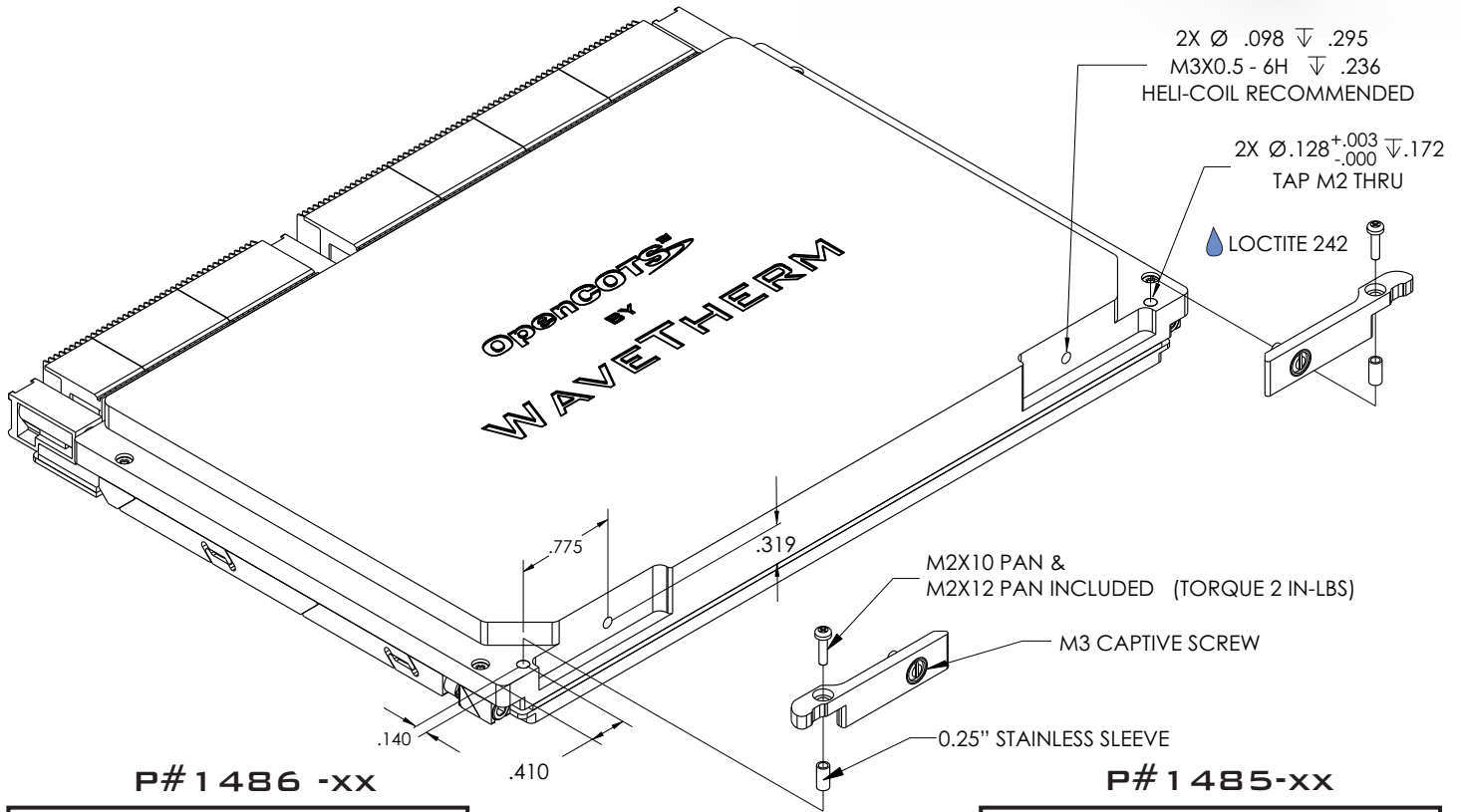
EN - ELECTROLESS NICKEL PER MIL-C-26074, CLASS 4, GRADE B, BRIGHT

OpenCOTS™

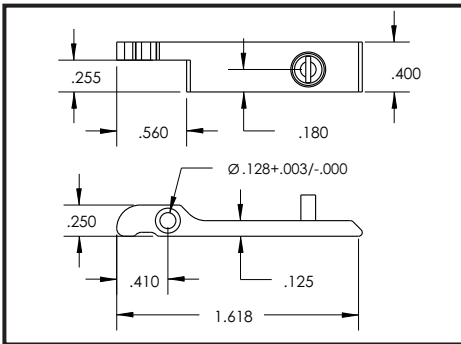
THE OPENCOTS 6U EJECTORS REPRESENT AN INNOVATIVE APPROACH TO CREATE A FIELD REPLACEABLE INJECT / EJECT HANDLE FOR GPCI AND VME/VPX DESIGNS. THE EJECTOR HANDLES ARE ERGONOMICALLY DESIGNED TO PROVIDE A MECHANICAL ADVANTAGE ENTERING AND EXITING A CHASSIS SLOT.



OPTIMIZED FOR VITA 48.2 AND GPCI



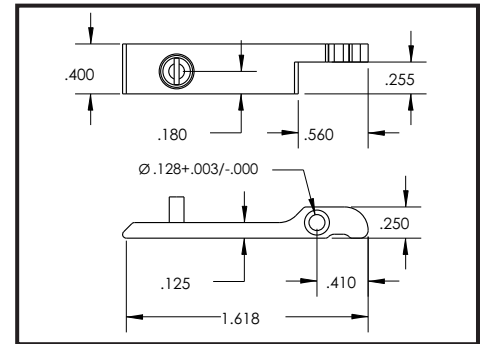
P# 1486 -XX



FEATURES:

- FIELD REPLACEABLE
- CAPTIVE SCREW
- INJECTION / EJECTION
- VITA 48.2 COMPLIANT
- VME COMPLIANT
- GPCI COMPLIANT
- LOW PROFILE DESIGN
- ERGONOMIC DESIGN
- 3D MODELS AVAILABLE

P# 1485 -XX



MATERIAL:

ALUMINUM AL6061-T6

HARDWARE SS300 SERIES

FINISH (-XX):

BA - BLACK ANODIZE PER MIL-A-8625, TYPE II, CLASS 2

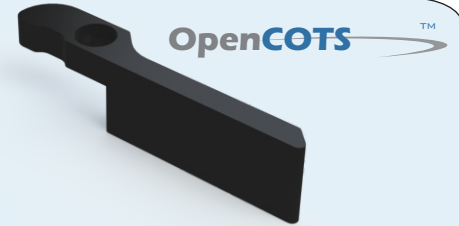
BH - HARD BLACK ANODIZE PER MIL-A-8625, TYPE III, CLASS 3

CC - CHEMICAL FILM PER MIL-C-5541, CLASS 1A, CLEAR

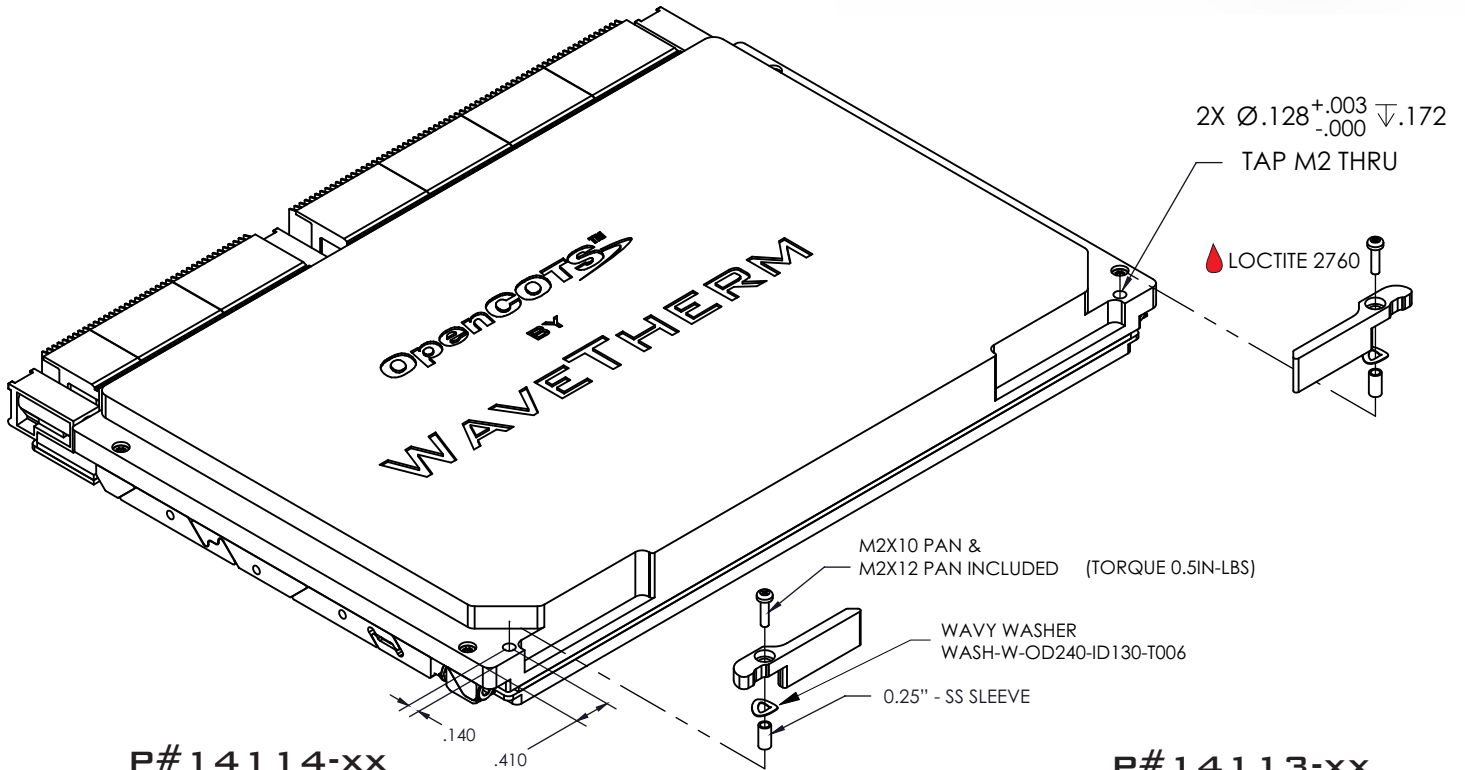
CG - CHEMICAL FILM PER MIL-C-5541, CLASS 1A, GOLD, NON-ROHS

EN - ELECTROLESS NICKEL PER MIL-C-26074, CLASS 4, GRADE B, BRIGHT

THE OPENCOTS 6U EJECTORS REPRESENT AN INNOVATIVE APPROACH TO CREATE A FIELD REPLACEABLE INJECT / EJECT HANDLE FOR GPCI AND VME/VPX DESIGNS. THE EJECTOR HANDLES ARE ERGONOMICALLY DESIGNED TO PROVIDE A MECHANICAL ADVANTAGE ENTERING AND EXITING A CHASSIS SLOT.

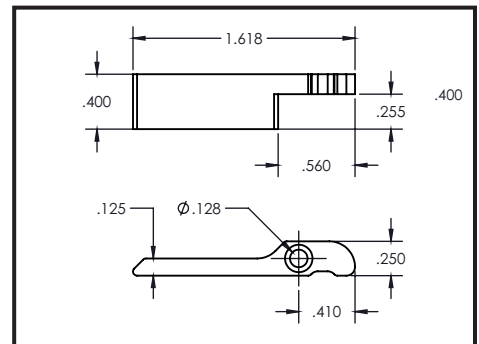
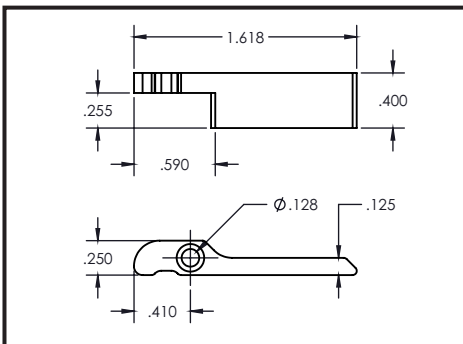


OPTIMIZED FOR VITA 48.2 AND GPCI



P# 14114-xx

P# 14113-xx



FEATURES:

- FIELD REPLACEABLE
- INJECTION / EJECTION
- VITA 48.2 COMPLIANT
- VME COMPLIANT
- GPCI COMPLIANT
- LOW PROFILE DESIGN
- ERGONOMIC DESIGN
- 3D MODELS AVAILABLE

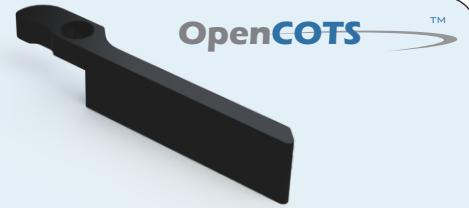
MATERIAL:

ALUMINUM AL6061-T6
HARDWARE SS300 SERIES

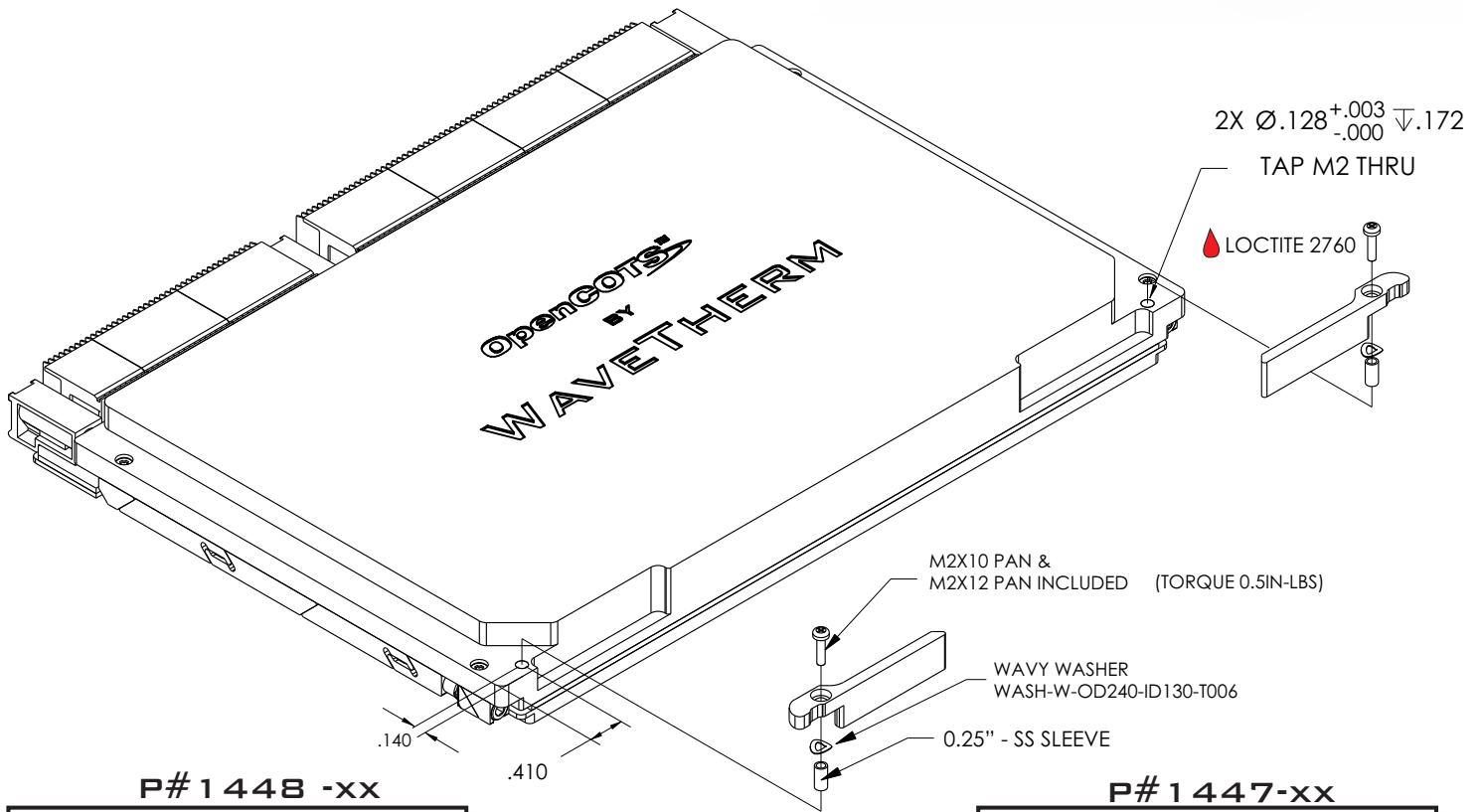
FINISH (-XX):

- BA** - BLACK ANODIZE PER MIL-A-8625, TYPE II, CLASS 2
- BH** - HARD BLACK ANODIZE PER MIL-A-8625, TYPE III, CLASS 3
- CC** - CHEMICAL FILM PER MIL-C-5541, CLASS 1A, CLEAR
- CG** - CHEMICAL FILM PER MIL-C-5541, CLASS 1A, GOLD, NON-ROHS
- EN** - ELECTROLESS NICKEL PER MIL-C-26074, CLASS 4, GRADE B, BRIGHT

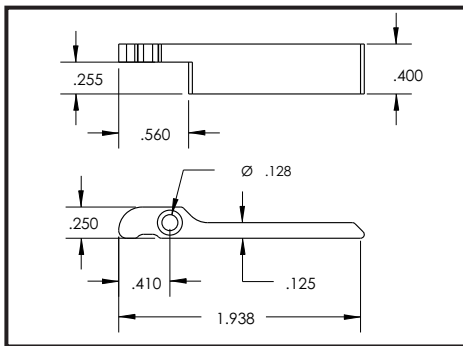
THE OPENCOTS 6U EJECTORS REPRESENT AN INNOVATIVE APPROACH TO CREATE A FIELD REPLACEABLE INJECT / EJECT HANDLE FOR CPCI AND VME/VPX DESIGNS. THE EJECTOR HANDLES ARE ERGONOMICALLY DESIGNED TO PROVIDE A MECHANICAL ADVANTAGE ENTERING AND EXITING A CHASSIS SLOT.



OPTIMIZED FOR VITA 48.2 AND CPCI



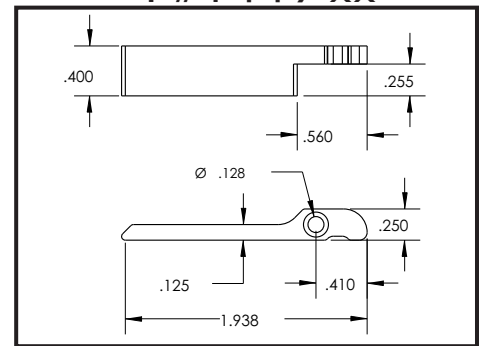
P# 1448 -XX



FEATURES:

- FIELD REPLACEABLE
- INJECTION / EJECTION
- VITA 48.2 COMPLIANT
- VME COMPLIANT
- CPCI COMPLIANT
- LOW PROFILE DESIGN
- ERGONOMIC DESIGN
- 3D MODELS AVAILABLE

P# 1447 -XX



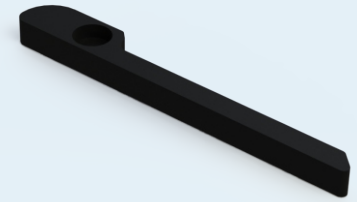
MATERIAL:

ALUMINUM AL6061-T6
HARDWARE SS300 SERIES

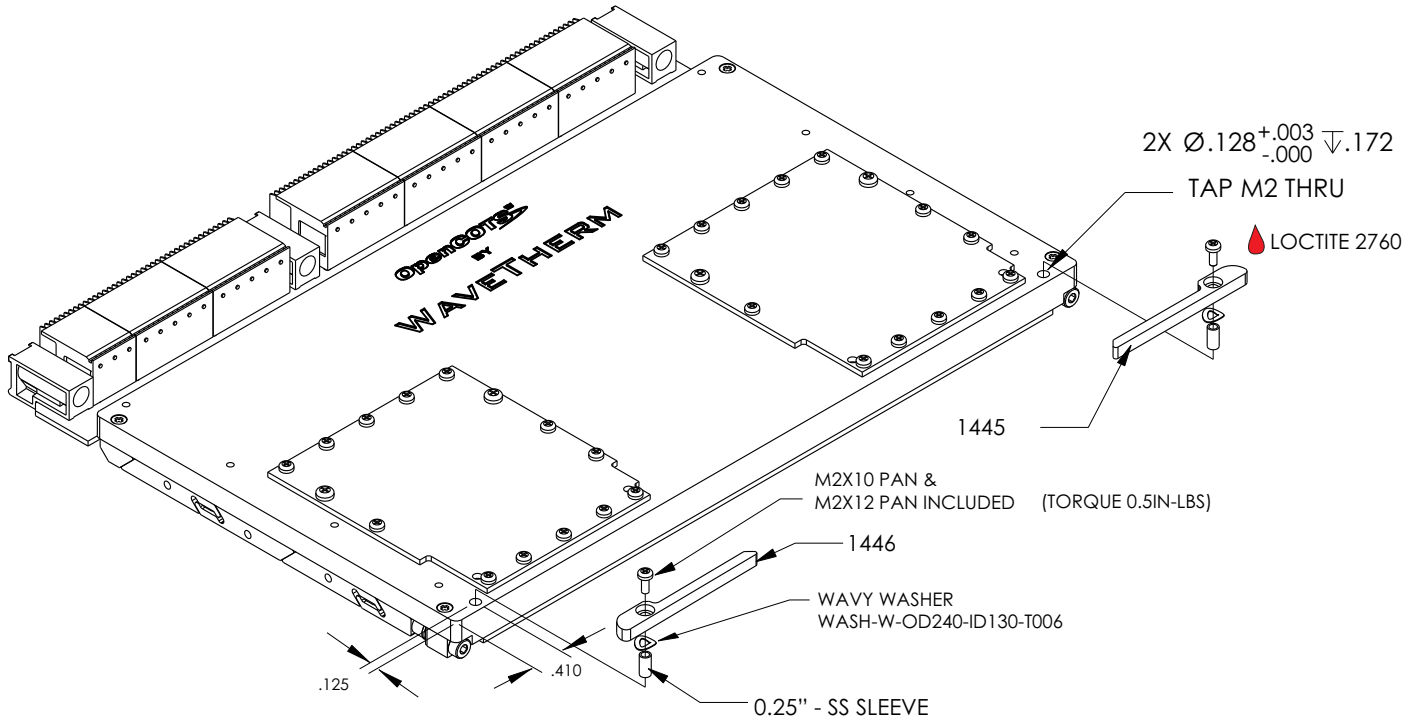
FINISH (-XX):

- BA** - BLACK ANODIZE PER MIL-A-8625, TYPE II, CLASS 2
- BH** - HARD BLACK ANODIZE PER MIL-A-8625, TYPE III, CLASS 3
- CC** - CHEMICAL FILM PER MIL-C-5541, CLASS 1A, CLEAR
- CG** - CHEMICAL FILM PER MIL-C-5541, CLASS 1A, GOLD, NON-ROHS
- EN** - ELECTROLESS NICKEL PER MIL-C-26074, CLASS 4, GRADE B, BRIGHT

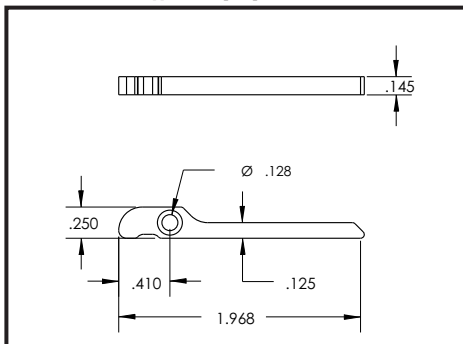
THE OPENCOTS 6U EJECTORS REPRESENT AN INNOVATIVE APPROACH TO CREATE A FIELD REPLACEABLE INJECT / EJECT HANDLE FOR CPCI AND VME/VPX DESIGNS. THE EJECTOR HANDLES ARE ERGONOMICALLY DESIGNED TO PROVIDE A MECHANICAL ADVANTAGE ENTERING AND EXITING A CHASSIS SLOT.



OPTIMIZED FOR VITA 48.2 AND CPCI



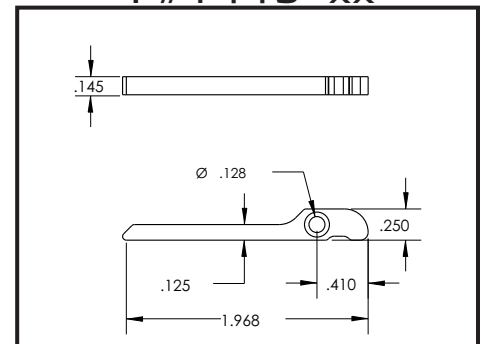
P# 1446-xx



FEATURES:

- FIELD REPLACEABLE
- INJECTION / EJECTION
- VITA 48.2 COMPLIANT
- VME COMPLIANT
- CPCI COMPLIANT
- LOW PROFILE DESIGN
- ERGONOMIC DESIGN
- 3D MODELS AVAILABLE

P# 1445-xx



MATERIAL:

ALUMINUM AL7075

HARDWARE SS300 SERIES

FINISH (-XX):

BA - BLACK ANODIZE PER MIL-A-8625, TYPE II, CLASS 2

BH - HARD BLACK ANODIZE PER MIL-A-8625, TYPE III, CLASS 3

CC - CHEMICAL FILM PER MIL-C-5541, CLASS 1A, CLEAR

CG - CHEMICAL FILM PER MIL-C-5541, CLASS 1A, GOLD, NON-ROHS

EN - ELECTROLESS NICKEL PER MIL-C-26074, CLASS 4, GRADE B, BRIGHT

OpenCOTS™

PART NUMBER BUILDER - KITS

1 4 2 4 - B A - 2 5 0

**EJECTOR
STYLE #**

**PLATED
SURFACE
FINISH**

**STANDOFF
LENGTH**

**3U
STYLES**

**6U
STYLES**

1472	1424
1473	1425
14021	1485
14022	1486
1491	1447
1492	1448
14036	1445
14035	1446
	14113
	14114

3/16" - 1875
1/4" - 250
5/16" - 3125
3/8" - 375

**INCLUDES
MATCHING
MOUNTING
SCREW**

BLACK ANODIZE PER MIL-A-8625, TYPE II, CLASS 2 - BA
HARD BLACK ANODIZE PER MIL-A-8625, TYPE III, CLASS 2 - BH
CHEMICAL FILM PER MIL-C-5541, CLASS 1A, CLEAR - CC
CHEMICAL FILM PER MIL-C-5541, CLASS 1A, GOLD, NON-ROHS - CG
ELECTROLESS NICKEL PER MIL-C-26074, CLASS 4, GRADE B, BRIGHT - EN
NICKEL PLATE PER QQ-N-290, CLASS 1, GRADE G, BRIGHT - N