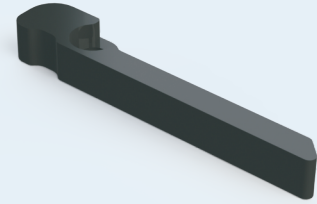
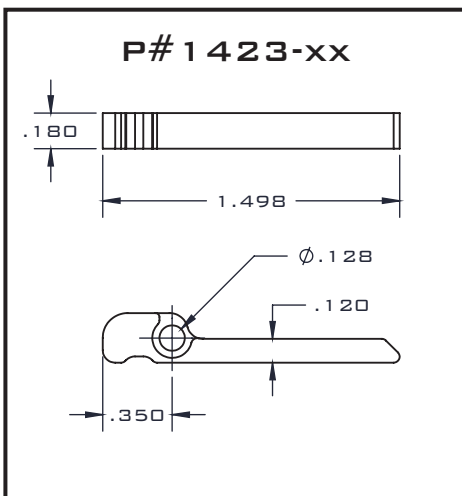
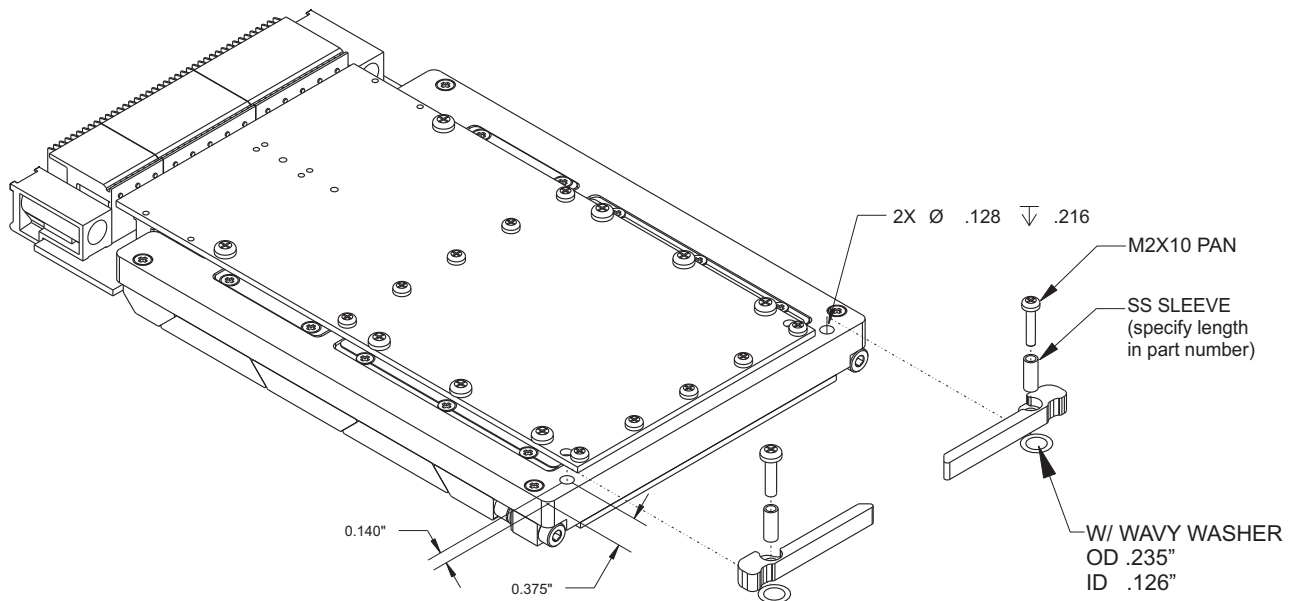


THE OPENCOTS 3U EJECTORS REPRESENT AN INNOVATIVE APPROACH TO CREATE A FIELD REPLACEABLE INJECT / EJECT HANDLE FOR CPCI AND VME/VPX DESIGNS. THE EJECTOR HANDLES ARE ERGONOMICALLY DESIGNED TO PROVIDE A MECHANICAL ADVANTAGE ENTERING AND EXITING A CHASSIS SLOT.

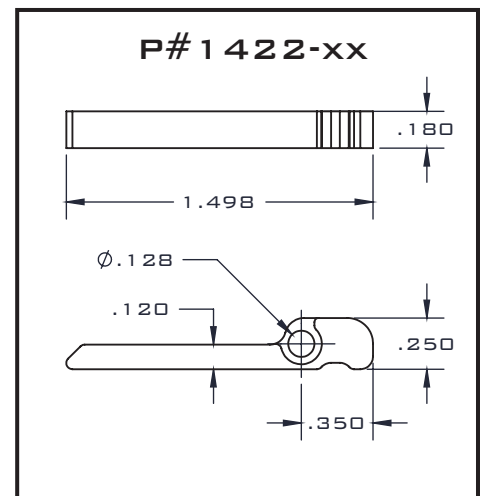


OPTIMIZED FOR VITA 48.2 AND CPCI



FEATURES:

- FIELD REPLACEABLE
- INJECTION / EJECTION
- VITA 48.2 COMPLIANT
- VME COMPLIANT
- CPCI COMPLIANT
- LOW PROFILE DESIGN
- ERGONOMIC DESIGN
- 3D MODELS AVAILABLE



MATERIAL:

ALUMINUM AL6061-T6

FINISH (-XX):

BA - BLACK ANODIZE PER MIL-A-8625, TYPE II, CLASS 2

BH - HARD BLACK ANODIZE PER MIL-A-8625, TYPE III, CLASS 3

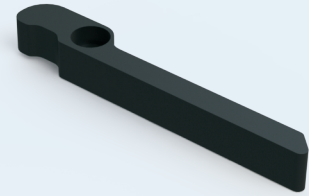
CC - CHEMICAL FILM PER MIL-C-5541, CLASS 1A, CLEAR

CG - CHEMICAL FILM PER MIL-C-5541, CLASS 1A, GOLD, NON-ROHS

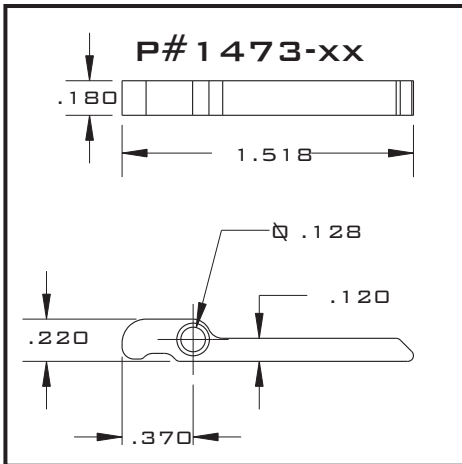
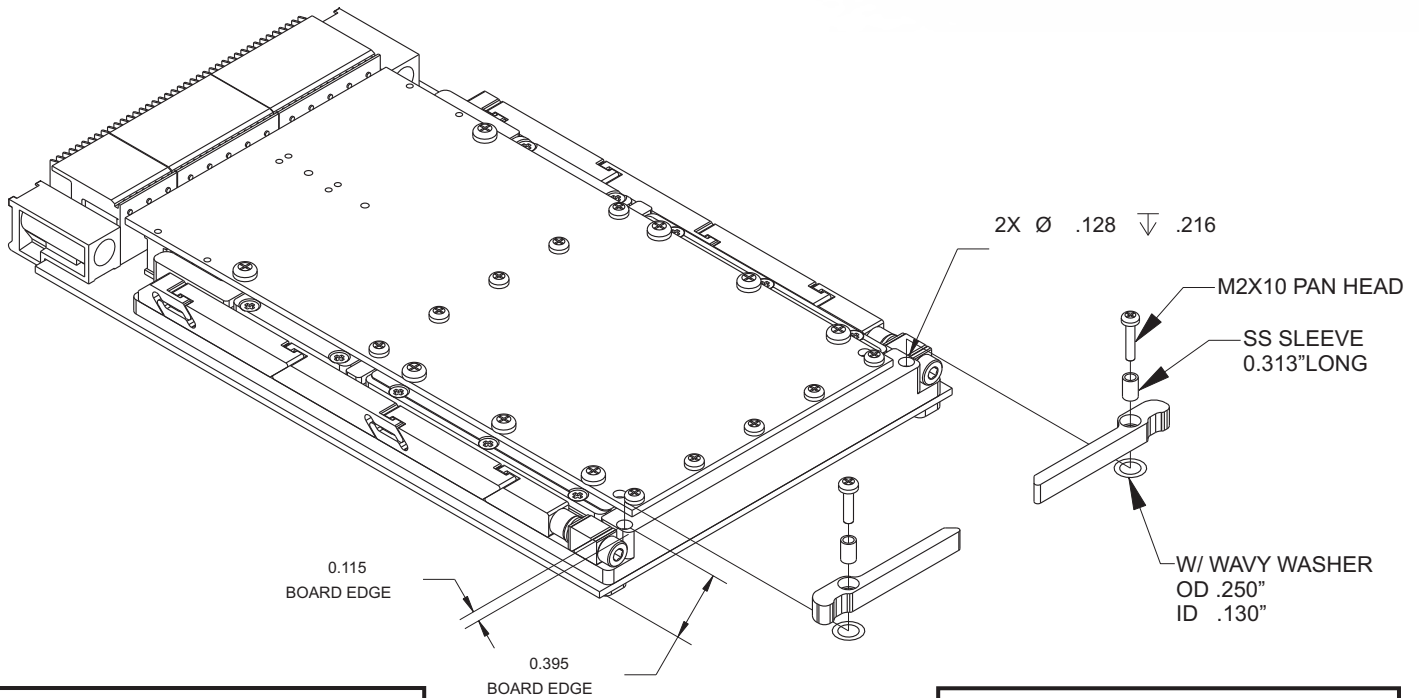
EN - ELECTROLESS NICKEL PER MIL-C-26074, CLASS 4, GRADE B, BRIGHT



THE OPENCOTS 3U EJECTORS REPRESENT AN INNOVATIVE APPROACH TO CREATE A FIELD REPLACEABLE INJECT / EJECT HANDLE FOR CPCI AND VME/VPX DESIGNS. THE EJECTOR HANDLES ARE ERGONOMICALLY DESIGNED TO PROVIDE A MECHANICAL ADVANTAGE ENTERING AND EXITING A CHASSIS SLOT.

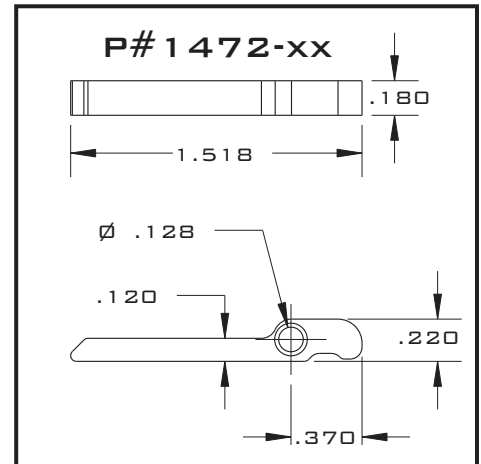


OPTIMIZED FOR VITA 48.2 AND CPCI



FEATURES:

- FIELD REPLACEABLE
- INJECTION / EJECTION
- VITA 48.2 COMPLIANT
- VME COMPLIANT
- CPCI COMPLIANT
- LOW PROFILE DESIGN
- ERGONOMIC DESIGN
- 3D MODELS AVAILABLE



MATERIAL:

ALUMINUM AL6061-T6



FINISH (-XX):

BA - BLACK ANODIZE PER MIL-A-8625, TYPE II, CLASS 2

BH - HARD BLACK ANODIZE PER MIL-A-8625, TYPE III, CLASS 3

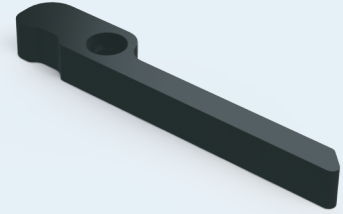
CC - CHEMICAL FILM PER MIL-C-5541, CLASS 1A, CLEAR

CG - CHEMICAL FILM PER MIL-C-5541, CLASS 1A, GOLD, NON-ROHS

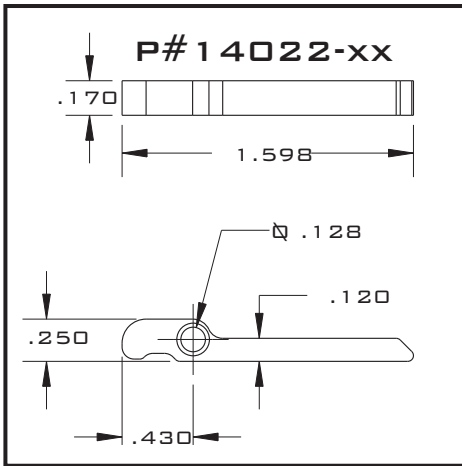
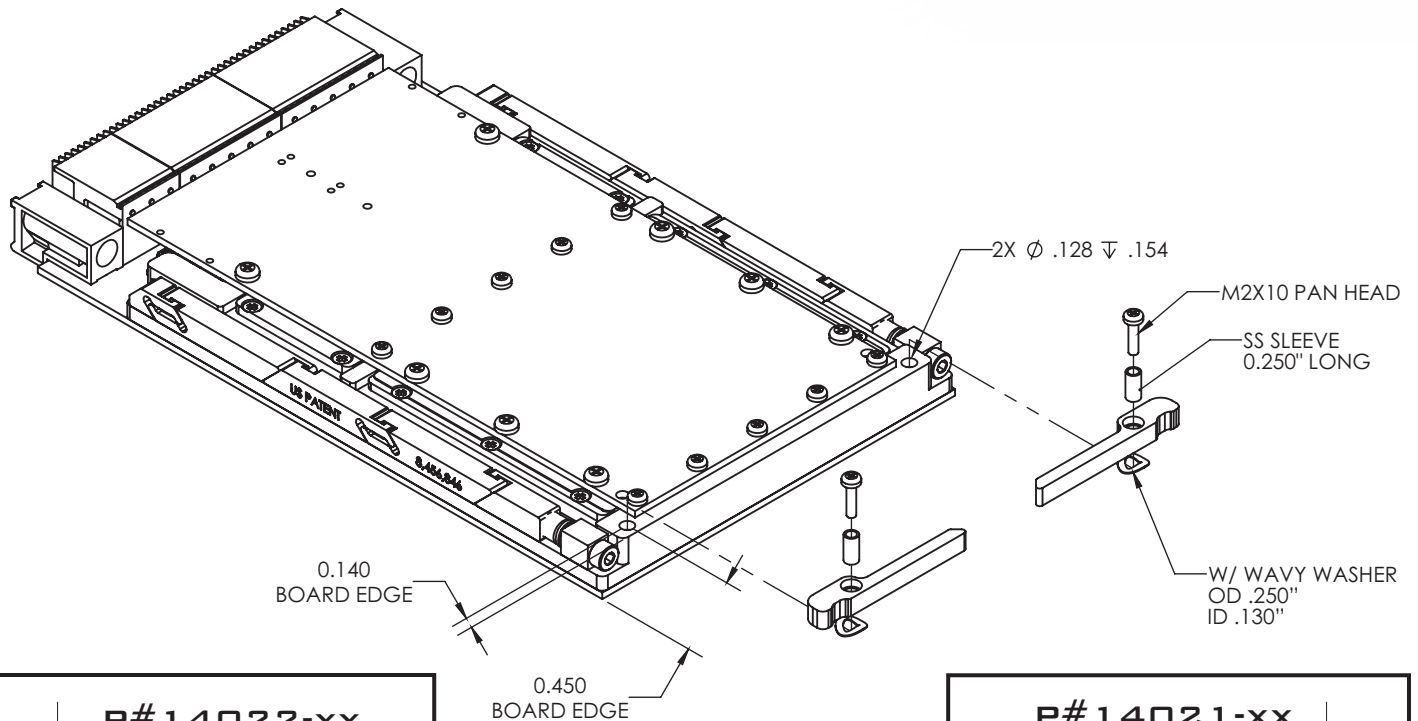
EN - ELECTROLESS NICKEL PER MIL-C-26074, CLASS 4, GRADE B, BRIGHT



THE OPENCOTS 3U EJECTORS REPRESENT AN INNOVATIVE APPROACH TO CREATE A FIELD REPLACEABLE INJECT / EJECT HANDLE FOR GPCI AND VME/VPX DESIGNS. THE EJECTOR HANDLES ARE ERGONOMICALLY DESIGNED TO PROVIDE A MECHANICAL ADVANTAGE ENTERING AND EXITING A CHASSIS SLOT.

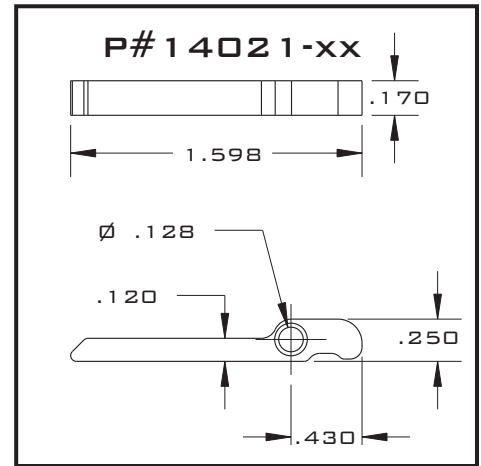


OPTIMIZED FOR VITA 48.2 AND GPCI



FEATURES:

- FIELD REPLACEABLE
- INJECTION / EJECTION
- VITA 48.2 COMPLIANT
- VME COMPLIANT
- GPCI COMPLIANT
- LOW PROFILE DESIGN
- ERGONOMIC DESIGN
- 3D MODELS AVAILABLE



MATERIAL:

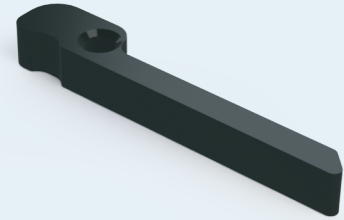
ALUMINUM AL6061-T6

FINISH (-XX):

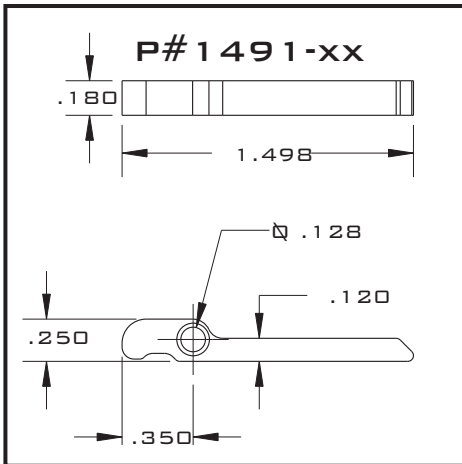
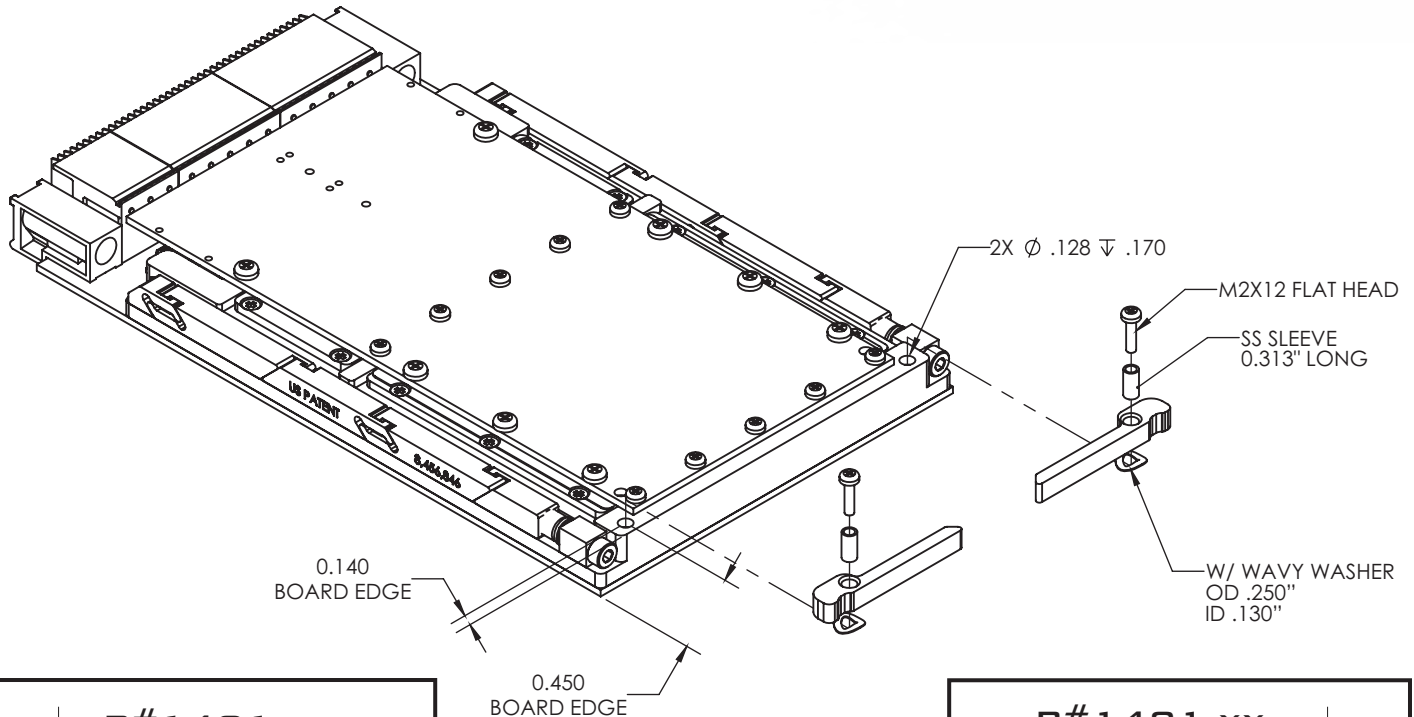
- BA** - BLACK ANODIZE PER MIL-A-8625, TYPE II, CLASS 2
- BH** - HARD BLACK ANODIZE PER MIL-A-8625, TYPE III, CLASS 3
- CC** - CHEMICAL FILM PER MIL-C-5541, CLASS 1A, CLEAR
- CG** - CHEMICAL FILM PER MIL-C-5541, CLASS 1A, GOLD, NON-ROHS
- EN** - ELECTROLESS NICKEL PER MIL-C-26074, CLASS 4, GRADE B, BRIGHT



THE OPENCOTS 3U EJECTORS REPRESENT AN INNOVATIVE APPROACH TO CREATE A FIELD REPLACEABLE INJECT / EJECT HANDLE FOR CPCI AND VME/VPX DESIGNS. THE EJECTOR HANDLES ARE ERGONOMICALLY DESIGNED TO PROVIDE A MECHANICAL ADVANTAGE ENTERING AND EXITING A CHASSIS SLOT.

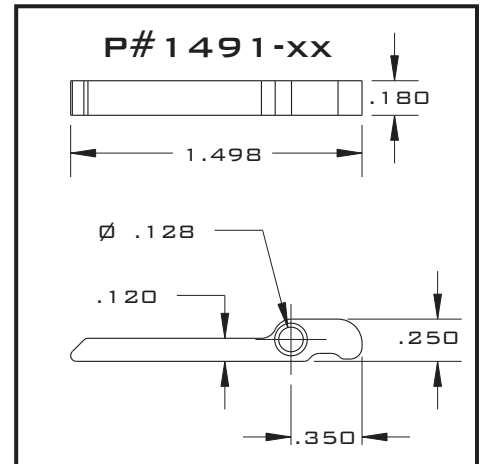


OPTIMIZED FOR VITA 48.2 AND CPCI



FEATURES:

- UNIVERSAL/ REVERSIBLE
- FIELD REPLACEABLE
- INJECTION / EJECTION
- VITA 48.2 COMPLIANT
- VME COMPLIANT
- CPCI COMPLIANT
- LOW PROFILE DESIGN
- ERGONOMIC DESIGN



MATERIAL:

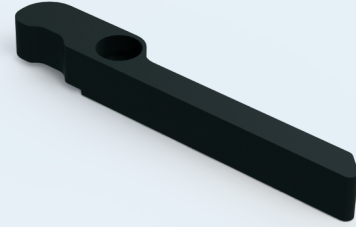
ALUMINUM AL6061-T6

FINISH (-XX):

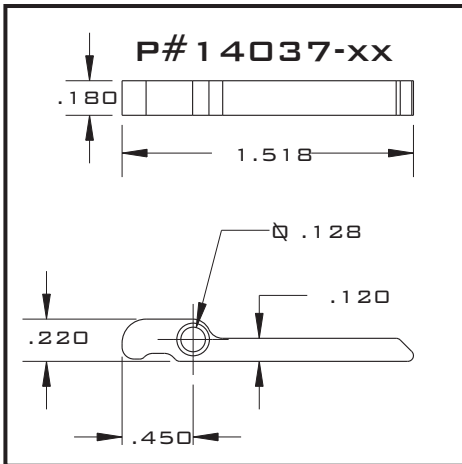
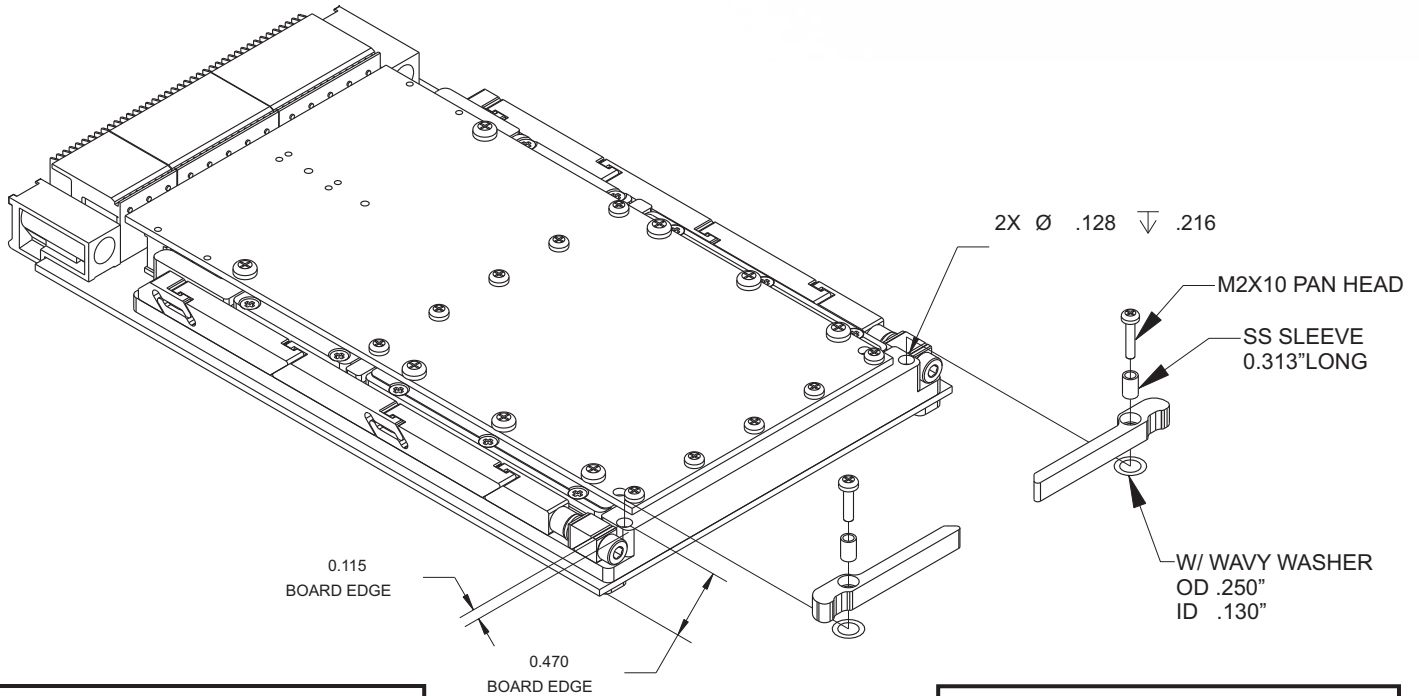
- BA** - BLACK ANODIZE PER MIL-A-8625, TYPE II, CLASS 2
- BH** - HARD BLACK ANODIZE PER MIL-A-8625, TYPE III, CLASS 3
- CC** - CHEMICAL FILM PER MIL-C-5541, CLASS 1A, CLEAR
- CG** - CHEMICAL FILM PER MIL-C-5541, CLASS 1A, GOLD, NON-ROHS
- EN** - ELECTROLESS NICKEL PER MIL-C-26074, CLASS 4, GRADE B, BRIGHT



THE OPENCOTS 3U EJECTORS REPRESENT AN INNOVATIVE APPROACH TO CREATE A FIELD REPLACEABLE INJECT / EJECT HANDLE FOR GPCI AND VME/VPX DESIGNS. THE EJECTOR HANDLES ARE ERGONOMICALLY DESIGNED TO PROVIDE A MECHANICAL ADVANTAGE ENTERING AND EXITING A CHASSIS SLOT.

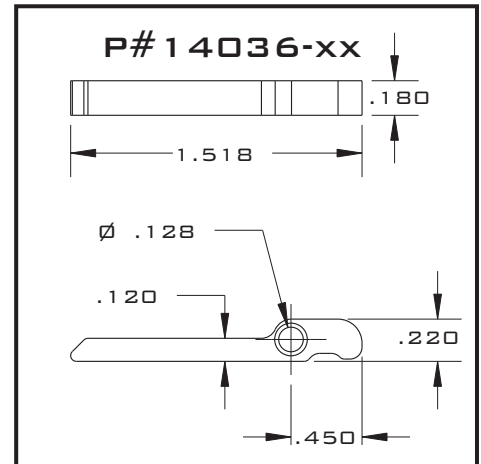


OPTIMIZED FOR VITA 48.2 AND GPCI



FEATURES:

- FIELD REPLACEABLE
- INJECTION / EJECTION
- VITA 48.2 COMPLIANT
- VME COMPLIANT
- GPCI COMPLIANT
- LOW PROFILE DESIGN
- ERGONOMIC DESIGN
- 3D MODELS AVAILABLE



MATERIAL:

ALUMINUM AL6061-T6

FINISH (-XX):

BA - BLACK ANODIZE PER MIL-A-8625, TYPE II, CLASS 2

BH - HARD BLACK ANODIZE PER MIL-A-8625, TYPE III, CLASS 3

CC - CHEMICAL FILM PER MIL-C-5541, CLASS 1A, CLEAR

CG - CHEMICAL FILM PER MIL-C-5541, CLASS 1A, GOLD, NON-ROHS

EN - ELECTROLESS NICKEL PER MIL-C-26074, CLASS 4, GRADE B, BRIGHT

PART NUMBER BUILDER - KITS

1424 - BA - 3125

EJECTOR STYLE

PLATED SURFACE FINISH

STANDOFF LENGTH

3U STYLES

6U STYLES

1422	1424
1423	1425
1472	1485
1473	1486
14021	1447
14022	1448
1491	1445
1492	1446
14036	14113
14035	14114

3/16" - 1875
 1/4" - 250
 5/16" - 3125
 3/8" - 375

**INCLUDES
MATCHING
MOUNTING
SCREW**

BLACK ANODIZE PER MIL-A-8625, TYPE II, CLASS 2 - BA
 HARD BLACK ANODIZE PER MIL-A-8625, TYPE III, CLASS 3 - BH
 CHEMICAL FILM PER MIL-C-5541, CLASS 1A, CLEAR - CC
 CHEMICAL FILM PER MIL-C-5541, CLASS 1A, GOLD, NON-ROHS - CG
 ELECTROLESS NICKEL PER MIL-C-26074, CLASS 4, GRADE B, BRIGHT - EN
 NICKEL PLATE PER QQ-N-290, CLASS 1, GRADE G, BRIGHT - N

