



ULTRA-THIN LED LIGHT BAR SERIES

Sizes Available: 12" & 20" Ultra Thin LED Light Bars



Modular, Low-Profile, Stylish, 12" or 20" LED Light fixture ideal for under cabinet and display lighting for commercial or residential uses. Easy to install by simply attaching (using the included mounting brackets) the required number of 12 and/or 20 inch Flat-LED strips, interconnecting these with included connectors (linear or 90° angle) or optional connector cable. Once installed, connect to our power source adapter or dimmable transformer to power up to 10 linear feet.

MODEL: LUM-212LSL-3000K
LUM-212LSL-4000K
LUM-212LSL-5500K
LUM-220LSL-3000K
LUM-220LSL-4000K
LUM-220LSL-5500K



Each retail package includes: Light fixture, mounting brackets, and a straight and angled connector.

PRODUCT FEATURES

- Extruded aluminum body w/ frosted acrylic lens
- End caps are identical on both sides making fixtures seamlessly inter-connectable using the linear, 90° angle connector, or cable connector (optional)
- Rated Lifetime: 50,000 hours
- Linear homogenous light
- LED modular design, expandable to cover desired length
- Extremely low power consumption at 5 Watt (12") / 8 Watt (20"), with high lumen (brightness) output
- Brightness can be controlled with optional Dimmer (Sold Separately)
- Requires a power adapter or driver
- Wall mounted dimmer requires our Lumilum® Dimmable Electronic LED Transformer

SPECIFICATIONS

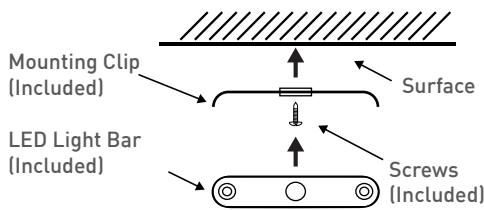
- Beam angle = 180°
- Light source: 42 SMD 3528 LED Chips
- Operating voltage = 24V
- Power consumption per bar = 5 Watt (12") / 8 Watt (20")
- Certifications: cUL listed
- 300 lumens (12") / 480 lumens (20")
- Lumen Output: 0.20A (12") - 0.33A (20") / CRI > 90
- Dimensions: 12": 11.81"(L) x 1.46"(W) x 0.27"(H)
20": 19.68"(L) x 1.46"(W) x 0.27"(H)
- Plastic connector dimension: 5/8"(L) x 1.3"(W) x 0.31"(H)
- Operating temperature = - 4°F to 104°F
- Installation: Stainless Steel mounting clips (2) per fixture and screws.
- Power supply (sold separately); alternatives: 60W power adapter can power up to 10 fixtures 60W
- Dimmable Electronic LED Transformer that can be used with low voltage wall mounted dimmers



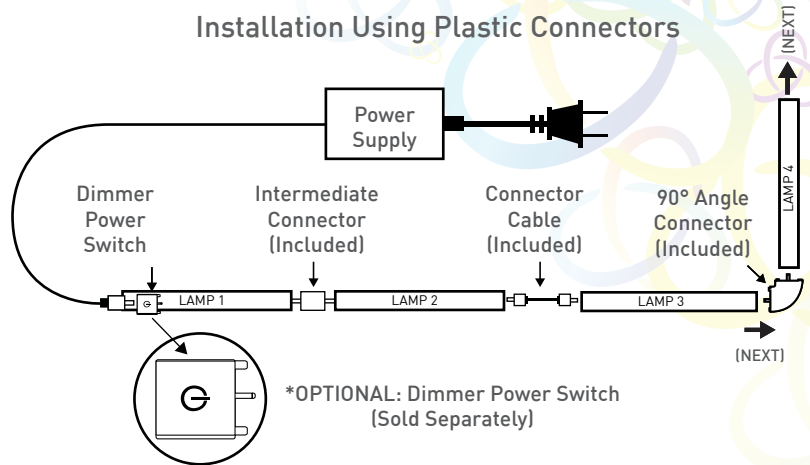
INSTALLATION DIAGRAM

Installation Using Plastic Connectors

Brackets Installation Diagram



Use the screws to attach the mounting clips to the surface where the LED Light Bar will be installed



ALTERNATIVES:

- A) Lumilum® Power Source Adapter 60W / 24V > Model: PA2460W3 (Connect up to 6 units of 20" light bars & 10 units of 12" light bars)
- B) Lumilum® Dimmable Electronic LED Transformer 60W / 24V > Model: PD2460WD (Connect up to 8 units of 20" light bars & 10 units of 12" light bars)

PERFORMANCE

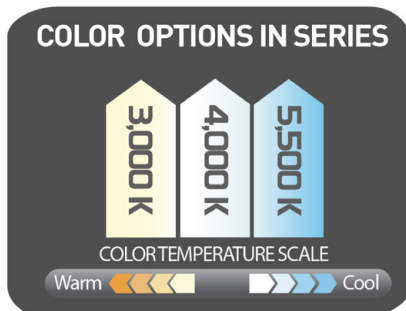
Model	Beam Angle	Color Temperature	Lumen/ Ft.	CRI	Power Consumption	Voltage	Certifications	Rated Lifetime
LUM-212LSL-3000K LUM-212LSL-4000K LUM-212LSL-5500K	180°	3,000°K 4,000°K 5,500°K	300	>90	5W / 12 in. Bar	24V	cUL	50,000 Hours
LUM-220LSL-3000K LUM-220LSL-4000K LUM-220LSL-5500K	180°	3,000°K 4,000°K 5,500°K	480	>90	8W / 20 in. Bar	24V	cUL	50,000 Hours

PACKAGING

SHIPPING DIMENSIONS & WEIGHT

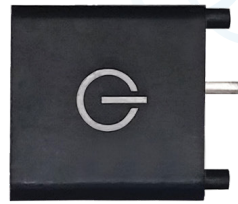
12" RETAIL BLISTER
3,000°K / 4,000°K / 5,500°K
4.5" (L) x .95" (W) x 17.75" (H), 0.5 lbs.

20" RETAIL BLISTER
3,000°K / 4,000°K / 5,500°K
4.72" (L) x .95" (W) x 26.50" (H), 0.8 lbs.



Each Retail Blister Includes:
Light fixture, mounting brackets, and a straight and angled connector

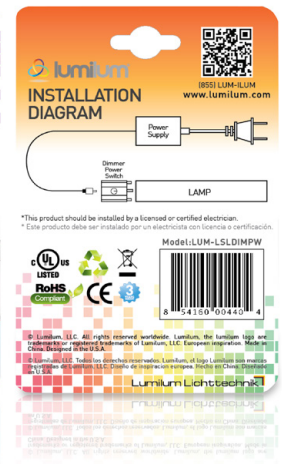
- Dimmers are optional
- Touch On / Off Dimmer Power Switch also available
- Plug & Play - Easy Installation
- Press and hold Power Button to adjust brightness
- Can be used with up to 10 linear feet of Linear Flat LED light bars



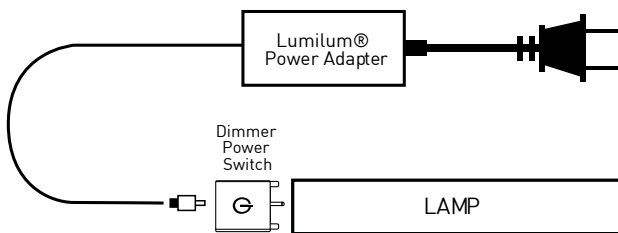
PACKAGING

SHIPPING DIMENSIONS & WEIGHT

DIMMER POWER SWITCH RETAIL BLISTER
5" (L) x .0.375" (W) x 7.5" (H), 0.4 lbs.

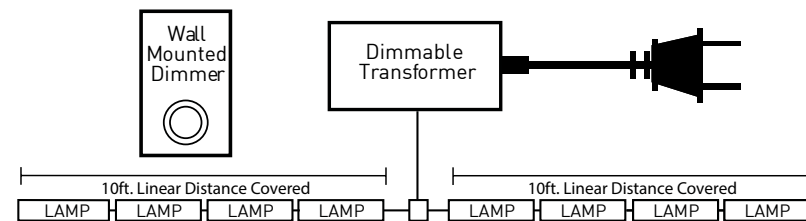
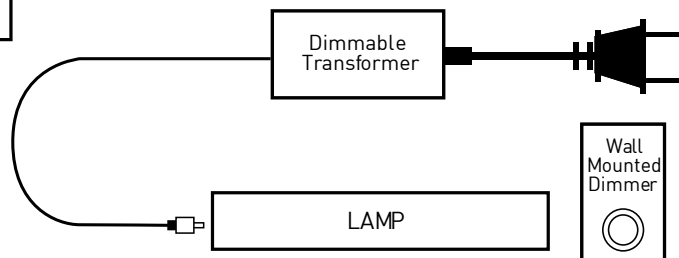


DIMMER INSTALLATION METHODS



A) Using Dimmer Power Switch and Power Adapter

B) Using Wall Mounted Dimmer and Dimmable Electronic Transformer



C) Diagram for Installations >10ft.

Model	LUM-PA2460W3 Plug-in LED Power Adapter 24V-60W Desktop Type (Indoor Use)	LUM-PD2460WD Dimmable Electronic LED Transformer 24V - 60W
Input/Output	Input: AC 100- 240V 50-60Hz Output: 24V DC, 2.5A	Input Voltage: AC 120V 60Hz Output: 24V DC, 2.5A
Power Output	60 Watts	60 Watts
Dimensions	5.51 x 2.36 x 1.34 in.	6.77 x 2.67 x 1.26 in.
Ratings	cUL, CE, RoHS	cUL, CE, RoHS



**Power Source Adapter
LUM-PA2460W3**



(Sold Separately)

**Dimmer Power Switch
LUM-2DSLSL**



Works with Lumilum®
Power Source Adapter
(Sold Separately)

**Dimmable LED Voltage
Driver LUM-PD2460WD**



Works with a Wall Mounted Dimmer
(See List of Approved Dimmer
Switches on Website)

ALTERNATIVE DIMMING METHODS

- A) Use Dimmer Power Switch (Model: LUM-2DSLSL) and connect it to the light fixture. Plug-in and the in LED Power Adapter. (See image above for connection details)
- B) Use a wall mounted dimmer in combination with a Dimmable Electronic LED Transformer (Model PD2460WD).

ACCESSORIES

90° Angle Connector



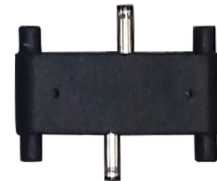
(1) Included in Retail
Blister

**Vertical 90° Angle
Connector LUM-2VALSL**



Sold Separately

Linear Connector



(1) Included in Retail
Blister

**Mounting Brackets
with Screws**



(2) Included in Retail
Blister

Connector Cable



(1) Included in Retail
Blister