



SMALL FLOOD LIGHTS

MODEL:
LUM-1FLD01-XXX LUM-2FLD01-XXX
LUM-3FLD01-XXX LUM-5FLD01-XXX



Lumilum® Small LED Flood Light Series offers an excellent cost/value proposition in today's energy and lighting-design conscious environment. The products in this series are an efficient replacement option for fixtures that use metal halide and halogen bulbs, at a cost that pays for itself over a relatively short period of time.

Made out of 100% die-cast aluminum and stainless steel, powder painted in standard black with lens made with clear-heat and impact resistant-tempered glass. The series is cUL rated* for wet locations (fixture & driver) and is offered with a yoke mounting bracket (10-50W Models come 0.77" strain relief power cord connector ready).

Wattage Color Temperature Options

- 10W Warm White (3,000°K) / Cool White (5,500°K) / RGB
- 20W Warm White (3,000°K) / Cool White (5,500°K) / RGB
- 30W Warm White (3,000°K) / Cool White (5,500°K) / RGB
- 50W Warm White (3,000°K) / Cool White (5,500°K) / RGB

**Image of product may vary by type and size



PRODUCT FEATURES

- 50,000 hours of maintenance-free operation
- Uses up to 90% less energy when compared to the HID equivalent
- Color Temperature (CCT) 3,000 & 5,500K (other options available)
- CRI: >80
- Yoke-mounted head with 270° rotation capacity
- Bracket included 1/2" connector ready hole (10-50W models)
- Universal voltage (120V through 277V)
- Suitable for ground mounting, up-lighting & down lighting
- Insect-proof
- Ideal for wet locations
- cUL Listed
- RoHS compliant
- 3-Year limited warranty

IDEAL USES

- Landscaping
- Exteriors
- Building facades
- Loading docks
- Signs and displays
- Walkways



PERFORMANCE

Model:		LUM-1FLD01	LUM-2FLD01	LUM-3FLD01	LUM-5FLD01
General Parameters	Power Consumption	10W	20W	30W	50W
	Lumen Output	>980 LM	2200 LM	>3500 LM	>5400 LM
	Lifespan	50,000 Hours			
	Color Temp. (CCT)	(3,000°K / 5,500°K / RGB)			
	CRI	>80			
	Beam Angle	120°			
	IP Rating	IP65 (Suitable for wet locations)			
	Warranty	3 Years			
Physical Description	Housing	Aluminum			
	Lens	Tempered Clear Glass			
	Finish	Textured Architectural Powdercoat Paint			
	Color	Black			
	Mounting	Yoke-mounted with 270° capacity			
Electrical	Input Voltage	120-277VAC			
	Input Current	.15A	.3A	.41A	.75A
	Power Factor	PF ≥0.95			
Certification and Safety	Certification	cUL			
	Grounding Resistance	25A 100mΩ			
	Electromagnetic Compatibility	EN55015, EN61000-2-3, EN61000-3-3, EN61547			
	Operating Temperature	-4°F - +104°F (-20°C - +40°C)	-4°F - +95°F (-20°C - +35°C)	-4°F - +95°F (-20°C - +35°C)	-4°F - +95°F (-20°C - +35°C)
	Storage Temp. Humidity	-40°F - +176°F (-40°C - +80°C), 10-90% RH			
Others	Dimension	Please refer to attached dimension drawing			
	Net Weight	1.3 lbs. (.59KG)	2.9 lbs. (1.31KG)	4.9 lbs. (2.22KG)	7.7 lbs. (3.49KG)
	Packing Size	5x3.875x4.5 in. (127x98x114mm)	9x6 x7.375 in. (229x152x187mm)	10.375x7x10 in. (263x178x254mm)	12.75x7.875x11.375 in. (324x200x289mm)
	Qty./Carton	12	8	4	2



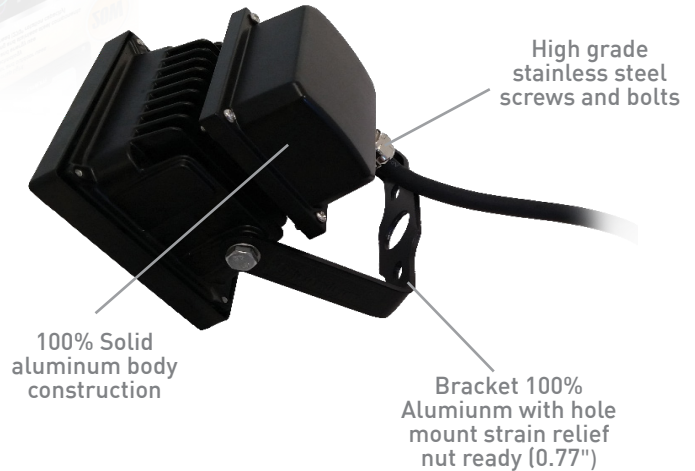
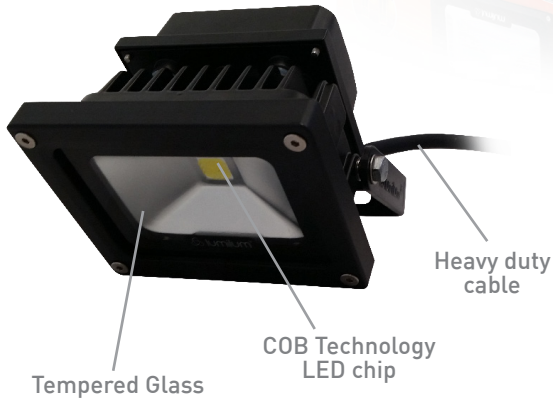
PACKAGING & COLOR OPTIONS

10W: 5"(L) x 3.875"(W) x 4.5"(H), 1.3 lbs.

20W: 9"(L) x 6"(W) x 7.375"(H), 2.9 lbs.

30W: 10.375"(L) x 7"(W) x 10"(H), 4.9 lbs.

50W: 12.75"(L) x 7.875"(W) x 11.375"(H), 7.7 lbs.



INSTALLATION DIAGRAM

