

Shipping Dimensions & Weight: 13" x 13"x 12.20" inches, 46.5lbs



PRODUCT FEATURES:

ETL Certified

Dimmable

Cutable every 12 inches (1 ft.)

Bright architectural and commercial grade

Flexible, high transmittance, PVC encasement

UV protected and fire retardant



SPECIFICATIONS:

SKU:	LUM-120NEO
Available Colors:	2,700K, 2200K, 3000K, 4000K, 5500K, Red, Pink, Blue, Green, Amber, & Yellow
IP Rating:	IP65 for Indoor and Outdoor
Voltage:	120V AC
Power Output:	2.34 Watts/Ft.
Reel Length:	150 ft. or 1 ft. Sections
Dimensions:	0.60" X 1.00" Inches (W X H)
CRI:	> 80
LED Diodes:	18/Ft.
Lumens:	90/Ft.
Operating Temp:	-10°F ~ 140°F

PERFORMANCE:

Color	Model	Color Temp.	CRI	Lumen/ft.	Beam Angle	Power Consumption/ft.	Voltage	Current/ft.
Antique Warm White	LUM-120NEO-2200K	2,200K	>80	250	180°	2.34W	120V	0.02A
Ultra Warm White	LUM-120NEO-2700K	2,700K	>80	265	180°	2.34W	120V	0.02A
Warm White	LUM-120NEO-3000K	3,000K	>80	280	180°	2.34W	120V	0.02A
Natural White	LUM-120NEO-4000K	4,000K	>80	300	180°	2.34W	120V	0.02A
Cool White	LUM-120NEO-5500K	5,500K	>80	330	180°	2.34W	120V	0.02A
Blue	LUM-120NEO-BLUE	-	-	-	180°	2.34W	120V	0.02A
Red	LUM-120NEO-RED	-	-	-	180°	2.34W	120V	0.02A
Pink	LUM-120NEO-PINK	-	-	-	180°	2.34W	120V	0.02A
Green	LUM-120NEO-GREEN	-	-	-	180°	2.34W	120V	0.02A
Amber	LUM-120NEO-AMBER	-	-	-	180°	2.34W	120V	0.02A
Yellow	LUM-120NEO-YELLOW	-	-	-	180°	2.34W	120V	0.02A

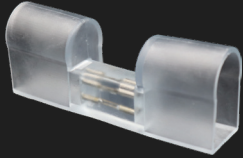
USES:

- Accent & Decorative Lighting
- Commercial Building Exteriors
- Sports Facilities & Arenas
- Casinos, Nightclubs, Bars, Resorts
- Architectural & Infrastructure Lighting
- Restaurants, Hotels, Theaters
- Back-lit Signs, Retail Spaces, Window Displays
- Game & Play Rooms
- Architectural Design & Wall Washing
- Aquariums & Stages, Concert Venues

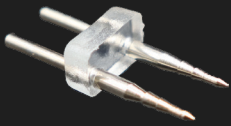
ACCESSORIES



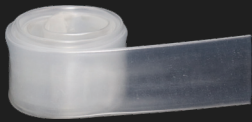
End Cap (Set of 2)
LUM-120NEO-EC



Splice Interconnector
LUM-120NEO-IC



Connecting Pin
LUM-120NEO-PSC

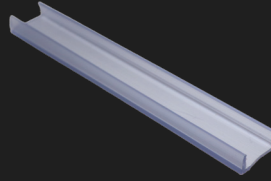


Shrink Wrap
LUM-SRKWAP-NEONSTD
(Sold in 12" Increments)



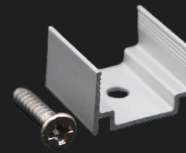
Power Plug
LUM-120NEO-PP

PVC U-CHANNEL

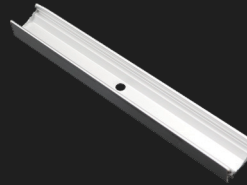


PVC U-Channel (4ft)
LUM-120NEO-PVC
(Not Recommended for Outdoor)

ALUMINUM U-CHANNEL



0.5" Aluminum U-Channel
(Set of 6)
LUM-120NEO-U0



Aluminum U-Channel (4ft)
LUM-120NEO-U4

CABLES



Interconnector Cable
LUM-120NEO-CC-XX
(6in, 12in, 20in, & 40 in)

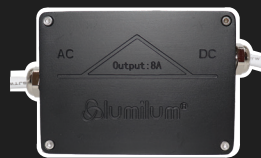


Splice Connector Cable
LUM-120NEO-SH-XX (5ft or 10ft)



10in Static White Control
Converter Cable
LUM-120NEO-SNX4

RECTIFIERS



Hardwired Rectifier Junction Box
LUM-120505-JB

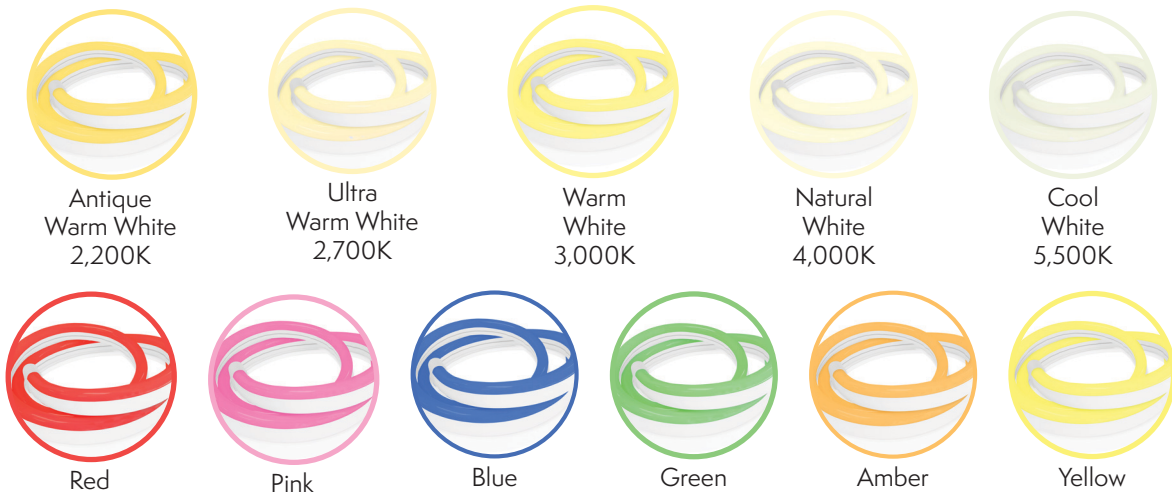


Compact Hardwired Rectifier
Junction Box
LUM-120505-CJB



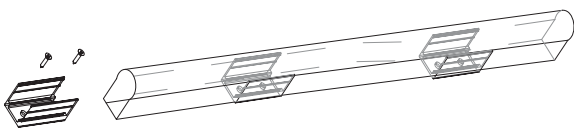
Stroboscopic Effect Mitigator
LUM-120505-SNIX

COLOR OPTIONS:

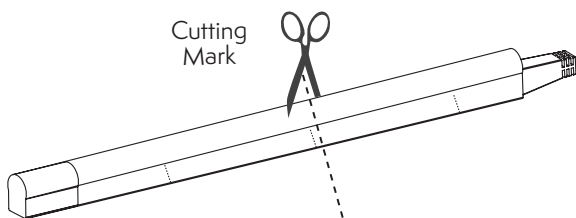


Channel Type:	SKU:	Channel Profile:	End Caps:	Channel Mockup:
Aluminum U-Channel	LUM-120NEO-PVC (4ft)		N/A	
PVC U-Channel	LUM-120NEO-U4 (4ft)		N/A	

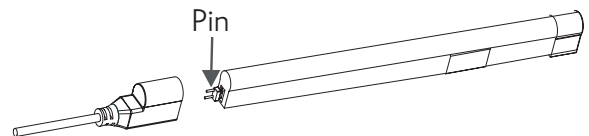
INSTALLATION DIAGRAM : 120V NEON STANDARD LED STRIP



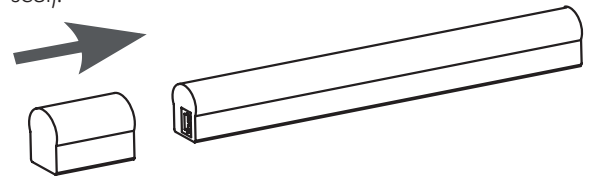
1. To mount, first choose your desired location and fasten the channel to your desired surface using #4 screws (for best results use recessed/flat head screws)



2. Once the channel is fastened, prepare your strip light by cutting according to your requirements (the strip can be cut in increments of 12 inches / 1 foot) if needed.



3. If you have cut your strip, you can use the provided H-shaped connecting pin by inserting the sharp end into your strip end. Now, you can connect the power cord to your strip and seal with glue, electrical silicone, or shrinkwrap (for outdoor installs needing waterproofing, we suggest using all 3 to ensure a tight seal).



4. Once your strip is cut, tested for power, and ready to mount, push it into the channel and that's it!