

Shipping Dimensions & Weight: 6.5" x 0.63" x 6.5" inches, 0.3lbs



SPECIFICATIONS:

SKU:	LUM-COBBP24
Available Colors:	RGB (Color Changing)
IP Rating:	IP20 (Indoor Only)
Voltage:	24V DC
Power Output:	3.05 Watts/Ft.
Reel Length:	16.4 Ft.
Dimensions:	0.39" X 0.60" Inches (W X H)
CRI:	-
LED Diodes:	100/Ft.
Chip Type:	COB 922
Lumens:	-
Operating Temp:	-68°F ~ 176°F

PRODUCT FEATURES:

- ETL Listed
- Dimmable
- Cuttable every 1.22" inches where marked
- High performance, low energy chips
- 50,000+ Hours of rated life
- UV protected and fire retardant



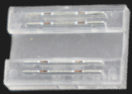
PERFORMANCE:

Color	Model	Color Temp.	CRI	Lumen/ft.	Beam Angle	Power Consumption/ft.	Voltage	Current/ft.
RGB (Color Changing)	LUM-COBBP24-RGB	-	-	-	180°	3.05W	24V	0.13A

USES:

- Casinos, Nightclubs, Bars, Resorts
- Gallery & Museum Lighting
- Cove, Soffit, Indirect Lighting
- Wine Racks & Desks
- Decorative Lighting
- Back-lit Signs, Retail Spaces, Window Displays
- Restaurants, Hotels, Theaters
- Accent & Mood Lighting
- Bookshelves & Display Cases
- Headboards & Mirrors

CONNECTOR OPTIONS



End to End Clip
LUM-COBRGB-E2E



End to Loose Wire Connector
LUM-COBRGB-E2P



End to End Connector Wire Clip
LUM-COBRGB-CBC

POWER ADAPTER CABLE

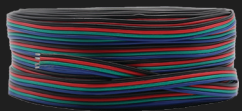


Male Power Adapter Cable
LUM-MPP8ST21



Female Power Adapter Cable
LUM-FPP8ST21

18 GAUGE WIRE SPOOLS



25ft, 50ft, 100ft. Spool,
18 Gauge Wire
LUM-W3RGB025ft | 50ft | 100ft

POWER SUPPLIES



Power Adapter
LUM-PA24XXW | 36W | 60W | 96W



Mean Well Driver
LUM-MWXXX24H 35W | 100W |
185W | 240W | 320W | 600W

DECODERS & AMPLIFIERS



RGB Low Voltage DMX Decoder
LUM-DMX212



RGB Low Voltage DMX (IP65)
LUM-DMXWP2



RGB Signal Amplifier (In-Wall
Series)
LUM-PR3002



RGBW Radio Frequency
Controller Receiver (In-Wall Series)
LUM-RF1009

REMOTES & WALL PANELS



Compact Radio Frequency Wireless
RGB Controller
LUM-RFCPRX53

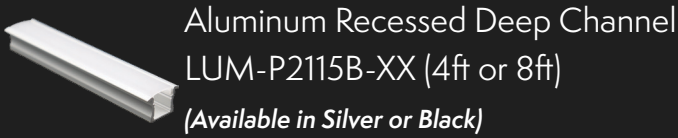


Color Wheel Wall Panel DMX
Controller
LUM-RGBUX8



In-Wall RGB Controller 1 Zone (3
Scenes) or 3 Zone
LUM-1Z138W/LUM-U1228W

RECESSED CHANNELS WITH DIFFUSER



Aluminum Recessed Deep Channel
LUM-P2115B-XX (4ft or 8ft)
(Available in Silver or Black)



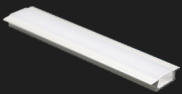
Endcap Solid
LUM-P2115B-ECN
(Available in White or Black)



Endcap with Hole
LUM-P2115B-ECH
(Available in White or Black)



Channel Mounting Clip
LUM-P2115B-CL



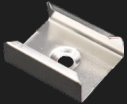
Aluminum Recessed Channel
LUM-P2206D-XX (4ft or 8ft)



Endcap Solid
LUM-P2206D-ECN



Endcap with Hole
LUM-P2206D-ECH



Channel Mounting Clip
LUM-P2206D-CL

CORNER CHANNEL WITH DIFFUSER



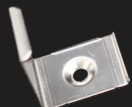
Aluminum Corner Channel
LUM-LP1919U-XX (4ft or 8ft)



Endcap Solid
LUM-LP1919U-ECN

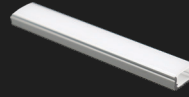


Endcap with Hole
LUM-LP1919U-ECH



Channel Mounting Clip
LUM-LP1919U-CL

SURFACE MOUNT CHANNEL WITH DIFFUSER



Aluminum Surface Mount Channel
LUM-P1707D-XX (4ft or 8ft)



Endcap with Hole
LUM-P1707D-ECH



Endcap Solid
LUM-P1707D-ECN



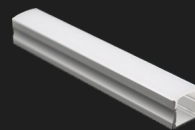
Channel Mounting Clip
LUM-P1707D-CL



Straight Channel Connector
LUM-P1707D-SC



90° Angle Channel Connector
LUM-P1707D-AC



Aluminum Surface Mount High Channel
LUM-P1715B-XX (4ft or 8ft)



Endcap with Hole
LUM-P1715B-ECH

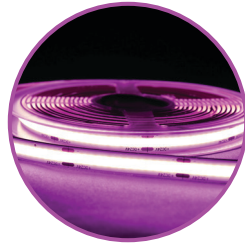


Endcap Solid
LUM-P1715B-ECN



Channel Mounting Clip
LUM-P1715B-CL

COLOR OPTIONS:



RGB (Color Changing)

Channel Type:	SKU:	Channel Profile:	End Caps:	Channel Mockup:
Aluminum Recessed Deep Channel	LUM-P2115B-XX (4ft or 8ft) <i>(Available in Silver or Black)</i>			
Aluminum Recessed Channel	LUM-P2206D-XX (4ft or 8ft)			
Aluminum Corner Channel	LUM-LP1919U-XX (4ft or 8ft)			
Aluminum Surface Mount Channel	LUM-P1707D-XX (4ft or 8ft)			
Aluminum Surface Mount High Channel	LUM-P1715B-XX (4ft or 8ft)			

INSTALLATION DIAGRAM: 24V LED STRIP LIGHT

