

Shipping Dimensions & Weight: 13" x 13" x 6.5" inches, 20lbs



PRODUCT FEATURES:

ETL Certified

Dimmable

Cuttable every 12" inches

3X's brighter than our Best Seller Series

50,000+ hours of rated life

UV protected and fire retardant

SPECIFICATIONS:

SKU:	LUM-120HLO
Available Colors:	3000K, 4000K, and 5500K
IP Rating:	IP65 (Indoor and Outdoor)
Voltage:	120V AC
Power Output:	6 Watts/ft.
Reel Length:	164 ft. (50 meters)
Dimensions:	0.58" X 0.32" Inches (W X H)
CRI:	> 90
LED Diodes:	20/ft.
Chip Type:	SMD 2835
Lumens:	650-690/ft.
Operating Temp:	-13°F ~ 113°F



PERFORMANCE:

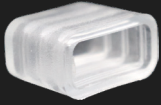
Color	Model	Color Temp.	CRI	Lumen/ft.	Beam Angle	Power Consumption/ft.	Voltage	Current/ft.
Warm White	LUM-120HLO-3000K	3,000K	> 90	650	120°	6W	120V	0.05A
Natural White	LUM-120HLO-4000K	4,000K	> 90	675	120°	6W	120V	0.05A
Cool White	LUM-120HLO-5500K	5,500K	> 90	690	120°	6W	120V	0.05A

- USES:**
- Cove, Soffit, Indirect Lighting
 - Accent & Decorative Lighting
 - Commercial Building Exteriors
 - Sports Facilities & Arenas
 - Architectural & Infrastructure Lighting
 - Restaurants, Hotels, Theaters
 - Bridges & Large Columns
 - Gallery & Museum Lighting
 - Back-lit Signs, Retail Spaces, Window Displays
 - Patios, Landscape Paths, Fences

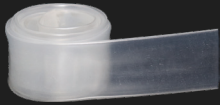
ACCESSORIES



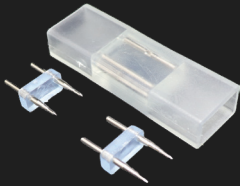
Mounting Clips (Set of 10)
LUM-120505-CL



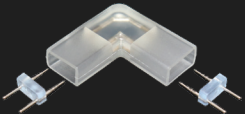
End Cap (Set of 2)
LUM-120505-EC



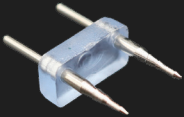
Shrink Wrap
LUM-SRKWAP-120B34
(Sold in 12" Increments)



Splice Connector
LUM-120505-IC



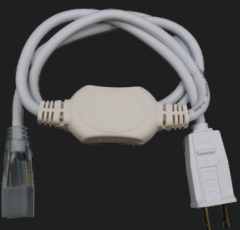
90° L Connector
LUM-120505-AC



Connecting Pin
LUM-120505-PSC



Waterproof Inline Connector
LUM-120505-IJT



4ft. Power Plug with Rectifier
LUM-120505-PP

CABLES



Interconnector Cable
LUM-120505CC-XX
(6in, 12in, 20in, 40in, & 10ft)



Extension Cable for Power Plug
LUM-120505-XT-XX
(10ft, 75ft, & 175ft)



5ft. Interconnector Cable
Round Water Resistant
LUM-120505RH-5FT



2 Conductor SJTW Cable
LUM-120SJW2X-500
(Sold in 12" Increments)



8ft. Y Connector Cable
LUM-120505-YCO



Splice Connector Cable
LUM-120505SH-XX
(5ft, 25ft, 50ft, & 100ft)

CONVERTER CABLES

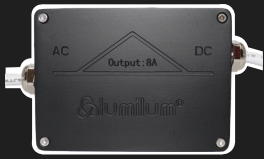


10in Static Color to DMX Converter
LUM-120505-SDMX



10in Static Color to DMX Converter
LUM-120505-RDMX

RECTIFIERS



Hardwired Rectifier
Junction Box
LUM-120505-JB



Compact Hardwired Rectifier
Junction Box
LUM-120505-CJB



Stroboscopic Effect Mitigator
LUM-120505-SNIX

RECESSED CHANNEL WITH DIFFUSER



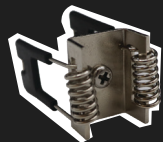
Aluminum Recessed Channel
LUM-T3535C-XX (4ft or 8ft)
(Available in Silver or Black)



Endcap with Hole
LUM-T3525-ECH
(Available in White or Black)

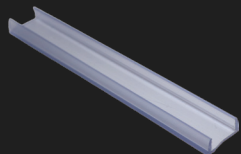


Endcap Solid
LUM-T3525-ECN
(Available in White or Black)



Channel Mounting Clip
LUM-T3525-CL

PVC U-CHANNEL

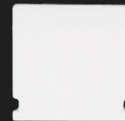


4ft. PVC U-Channel
LUM-120505-PVCU4
(Not Recommended for Outdoor)

SURFACE MOUNT CHANNEL WITH DIFFUSER



Aluminum Surface Mount
Channel
LUM-P2114-XX(4ft or 8ft)
(Available in Silver or Black)



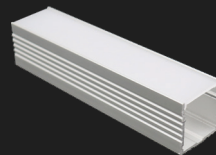
Endcap Solid
LUM-P2114-ECN
(Available in White or Black)



Endcap with Hole
LUM-P2114-ECH
(Available in White or Black)



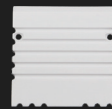
Channel Mounting Clip
LUM-P2114-CL



Aluminum Surface Mount
Mega Channel
LUM-P3535C-XX (4ft or 8ft)

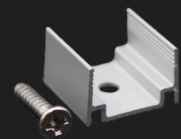


Endcap with Hole
LUM-P3535C-ECH

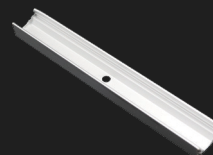


Endcap Solid
LUM-P3535C-ECN

ALUMINUM U-CHANNELS



0.5" Aluminum U-Channel
(Set of 6)
LUM-120505-U0

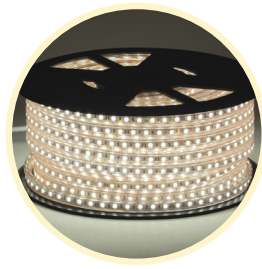


Aluminum U-Channel
LUM-120505-XX (1ft or 4ft)

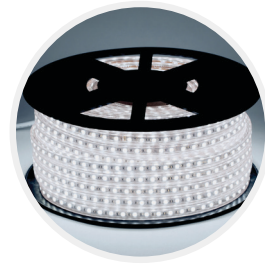
COLOR OPTIONS:



Warm
White
3,000K



Natural
White
4,000K

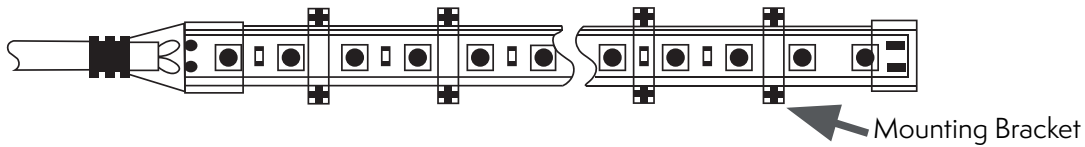


Cool
White
5,500K

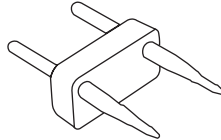
Channel Type:	SKU:	Channel Profile:	End Caps:	Channel Mockup:
Aluminum U-Channel	LUM-120505-XX (1ft or 4ft)		N/A	
PVC U-Channel	LUM-120505-PVCU4		N/A	
Aluminum Surface Mount Channel	LUM-P2114-XX (4ft or 8ft) <i>(Available in Silver or Black)</i>			
Aluminum Surface Mount Mega Channel	LUM-P3535C-XX (4ft or 8ft)			
Aluminum Recessed Channel	LUM-T3535C-XX (4ft or 8ft) <i>(Available in Silver or Black)</i>			

INSTALLATION DIAGRAM : 120V LED STRIP LIGHTS

Using Lumilum® Mounting Bracket (LUM-120505-EC)

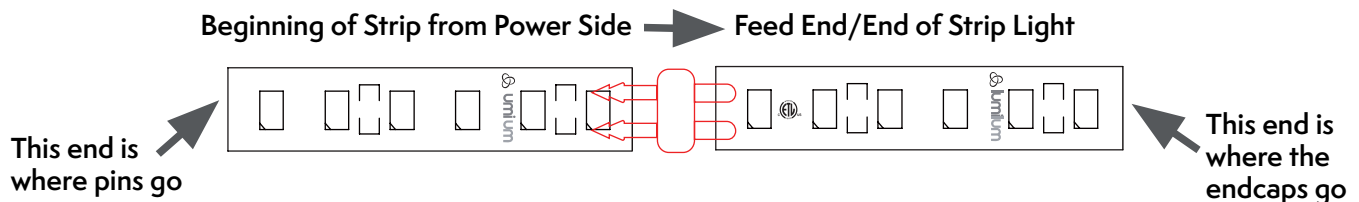


ABOUT CONNECTING PINS AND STRIP POLARITY



1. Pins should never be fully inserted as this may cause damage to the internal copper wiring.

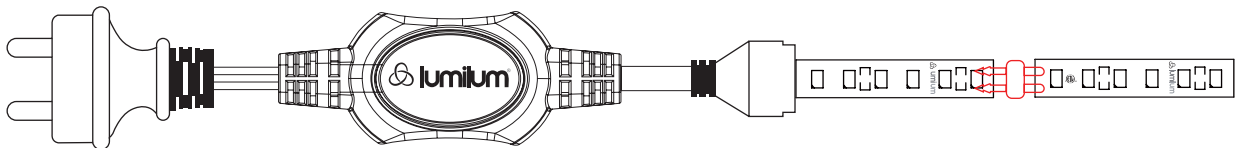
Insert pins correctly by only pushing them in about halfway between the sharp prongs and the plastic stopper.



2. Strip polarity and how it works; polarity is the direction in which the electrical current runs.

This is important to remember when setting up your LED strip lights because semiconductors only allow electrical currents to run one way.

Therefore, if you have the direction of the current wrong, electricity will not flow through and your strip will not illuminate.



3. Proper sealing (waterproofing) for outdoor applications

For a secure and professional finish, it's recommended that at least ONE of the following be used to seal any strip light that will be installed outdoors:

- **Loctite - UV Light Curing Sealant**
- **Heat Shrink**
- **Electrical Grade Silicone**