

**Shipping Dimensions & Weight:**

25ft. spool | 8.3" x 8.3" x 4.2", 4.6 lbs

50ft. spool | 8.3" x 8.3" x 6.5", 7.7 lbs.

164 ft. spool | 13" x 13" x 9.1", 24.6 lbs.



**PRODUCT FEATURES:**

ETL Certified

Dimmable

Cuttable every 12 inches (1 ft.)

Controlled with DMX Decoder/Controller

50,000+ hours of rated life

UV protected and fire retardant

**SPECIFICATIONS:**

SKU:	LUM-B34XTS
Available Colors:	RGB (Color Changing)
IP Rating:	IP65 (Indoor and Outdoor)
Voltage:	120V AC
Power Output:	3 Watts/ft.
Reel Length:	164 ft. (50 meters)
Dimensions:	0.70" X 0.33" Inches (W X H)
CRI:	-
LED Diodes:	24/ft.
Chip Type:	SMD 5050
Lumens:	-
Operating Temp:	-13°F ~ 113°F



**PERFORMANCE:**

Color	Model	Color Temp.	CRI	Lumen/ft.	Beam Angle	Power Consumption/ft.	Voltage	Current/ft.
RGB	LUM-B34XTS-025 (25ft. reel) LUM-B34XTS-050 (50ft. reel) LUM-B34XTS-164 (164ft. reel)	Color Changing	-	-	120°	3W	120V	0.03A

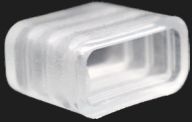
**USES:**

- Cove, Soffit, Indirect Lighting
- Commercial Building Exteriors & Signage
- Aquariums & Stages, Concert Venues
- Casinos, Nightclubs, Bars, Resorts
- Accent & Decorative Lighting
- Architectural Design & Wall Washing
- Restaurants, Hotels, Spas, Theaters
- Bridges, Columns, Exterior Structures
- Patios, Paths, Decks, Fences
- Game & Play Rooms

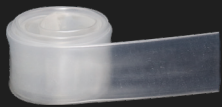
## ACCESSORIES



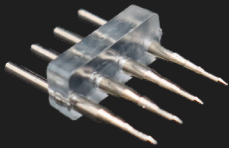
Mounting Clips (Set of 10)  
LUM-B34XTS-CL



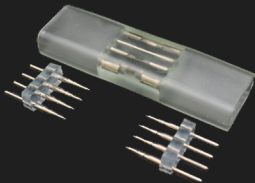
End Cap (Set of 2)  
LUM-B34XTS-EC



Shrink Wrap  
LUM-SRKWAP-120B34  
*(Sold in 12" Increments)*



Connecting Pin  
LUM-B34XTS-PSC



Splice Connector  
LUM-B34XTS-IC



Waterproof Inline Connector  
LUM-B34XTS-IJC  
(3 Wire/RGB)



Waterproof Inline Connector  
LUM-B34XTS-IJ4  
(4 Wire/RGB)

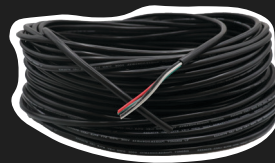
## CABLES



B34XTS Interconnector Cable  
LUM-B34XTS-CC-XX  
(6in, 12in, 20in, & 40in)  
*\*Available in Black and White*



RGB Strip to DMX Extension Cable  
LUM-B34XTS-XT-XX  
(10ft, 75ft, & 175ft)



3 or 4 Conductor SJTW Cable  
LUM-B34SJW3X-500  
LUM-B34SJW4X-500  
*(Sold in 12" Increments)*

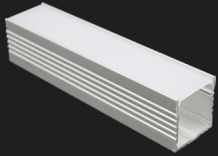


Strip to DMX Connector Cable  
LUM-B34XTS-CX-4FT



8ft Y-Connector Cable  
LUM-B34XTS-YCO

# SURFACE MOUNT CHANNEL WITH DIFFUSER



Aluminum Surface Mount  
(Mega Channel)  
LUM-P3535C-XX (4ft or 8ft)

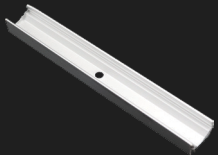


Endcap Solid  
LUM-P3535C-ECN

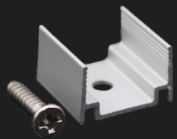


Endcap with Hole  
LUM-P3535C-ECH

# ALUMINUM U-CHANNELS

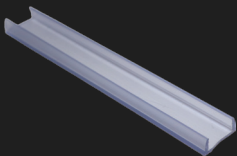


Aluminum U-Channel  
LUM-B34XTS-XX (1ft or 4ft)



0.5" Aluminum U-Channel  
(Set of 6)  
LUM-B34XTS-UO

# PVC U-CHANNEL



4ft. PVC U-Channel  
LUM-B34XTS-PVCU4  
(Not Recommended for Outdoor)

# DMX DECODERS & CONTROLLERS



DMX1 Decoder/Controller (IP20 Rated/Indoor)  
LUM-B34XTS-DMX1



DMX2 Decoder/Controller (IP65 Rated/Outdoor)  
LUM-B34XTS-DMX2



DMX Color Wheel Wall Panel  
LUM-RGBUX8

# COLOR OPTIONS:



RGB Color Changing

Channel Type:	SKU:	Channel Profile:	End Caps:	Channel Mockup:
Aluminum U-Channel	LUM-B34XTS-U0/U1/U4		N/A	
PVC U-Channel	LUM-B34XTS-PVC		N/A	
Aluminum Surface Mount Mega Channel	LUM-P3535C-XX (4ft or 8ft)			

## INSTALLATION DIAGRAM : DMX DECODER/CONTROLLER

*Please reference our DMX cutsheets for further instructions.*

Using Lumilum® Mounting Bracket (LUM-B34XTS-CL)

