

Shipping Dimensions & Weight: 13" x 13" x 6.5" inches, 20lbs



## PRODUCT FEATURES:

Dimmable

Cuttable every 12 inches (1 ft.)

ETL Certified

More energy efficient than the Standard Series and High Lumen Output Series

50,000+ hours of rated life

UV protected and fire retardant

## SPECIFICATIONS:

SKU:	LUM-120EES
Available Colors:	3,000K, 4,000K, and 5,500K
IP Rating:	IP65 (Indoor and Outdoor)
Voltage:	120V AC
Power Output:	1.8 Watts/ft.
Reel Length:	164 ft. (50 meters)
Dimensions:	0.58" X 0.32" Inches (W X H)
CRI:	> 90
LED Diodes:	20/ft.
Chip Type:	SMD 5050
Lumens:	300-350/ft.
Operating Temp:	-13°F ~ 113°F



## PERFORMANCE:

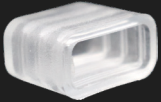
Color	Model	Color Temp.	CRI	Lumen/ft.	Beam Angle	Power Consumption/ft.	Voltage	Current/ft.
Warm White	LUM-120HLO-3000K	3,000K	> 90	300	120°	1.8W	120V	0.015A
Natural White	LUM-120HLO-4000K	4,000K	> 90	325	120°	1.8W	120V	0.015A
Cool White	LUM-120HLO-5500K	5,500K	90	350	120°	1.8W	120V	0.015A

- USES:**
- Cove, Soffit, Indirect Lighting
  - Accent & Decorative Lighting
  - Architectural Design & Wall Washing
  - Restaurants, Hotels, Theaters
  - Bridges, Columns, Exterior Structures
  - Staircase, Handrail, Step Lighting
  - Back-lit Signs, Retail Spaces, Window Displays
  - Patios, Landscape Paths, Fences
  - Workplace Safety & Task Lighting
  - Under Cabinets, Tables, Toe-Kicks

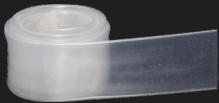
## ACCESSORIES



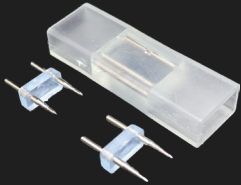
Mounting Clips (Set of 10)  
LUM-120505-CL



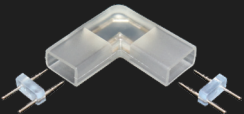
End Cap (Set of 2)  
LUM-120505-EC



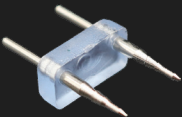
Shrink Wrap  
LUM-SRKWAP-120B34  
*(Sold in 12" Increments)*



Splice Connector  
LUM-120505-IC



90° L Connector  
LUM-120505-AC



Connecting Pin  
LUM-120505-PSC



Waterproof Inline Connector  
LUM-120505-IJT



4ft. Power Plug with Rectifier  
LUM-120505-PP

## CABLES



Interconnector Cable  
LUM-120505CC-XX  
(6in, 12in, 20in, 40in, & 10ft)



Extension Cable for Power Plug  
LUM-120505-XT-XX  
(10ft, 75ft, & 175ft)



5ft. Interconnector Cable  
Round Water Resistant  
LUM-120505RH-5FT



2 Conductor SJTW Cable  
LUM-120SJW2X-500  
*(Sold in 12" Increments)*



8ft. Y Connector Cable  
LUM-120505-YCO



Splice Connector Cable  
LUM-120505SH-XX  
(5ft, 25ft, 50ft, & 100ft)

## CONVERTER CABLES

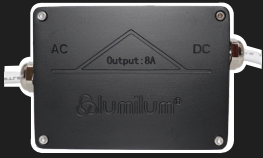


10in Static Color to DMX Converter  
LUM-120505-SDMX



10in Static Color to DMX Converter  
LUM-120505-RDMX

## RECTIFIERS



Hardwired Rectifier  
Junction Box  
LUM-120505-JB

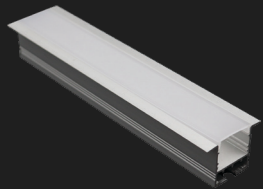


Compact Hardwired Rectifier  
Junction Box  
LUM-120505-CJB



Stroboscopic Effect Mitigator  
LUM-120505-SNIX

## RECESSED CHANNEL WITH DIFFUSER



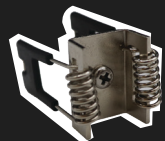
Aluminum Recessed Channel  
LUM-T3535C-XX (4ft or 8ft)  
*(Available in Silver or Black)*



Endcap with Hole  
LUM-T3525-ECH  
*(Available in White or Black)*

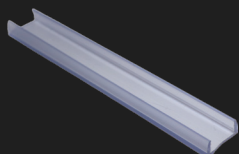


Endcap Solid  
LUM-T3525-ECN  
*(Available in White or Black)*



Channel Mounting Clip  
LUM-T3525-CL

## PVC U-CHANNEL

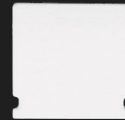


4ft. PVC U-Channel  
LUM-120505-PVCU4  
*(Not Recommended for Outdoor)*

## SURFACE MOUNT CHANNEL WITH DIFFUSER



Aluminum Surface Mount  
Channel  
LUM-P2114-XX(4ft or 8ft)  
*(Available in Silver or Black)*



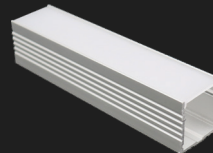
Endcap Solid  
LUM-P2114-ECN  
*(Available in White or Black)*



Endcap with Hole  
LUM-P2114-ECH  
*(Available in White or Black)*



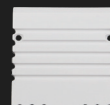
Channel Mounting Clip  
LUM-P2114-CL



Aluminum Surface Mount  
Mega Channel  
LUM-P3535C-XX (4ft or 8ft)



Endcap with Hole  
LUM-P3535C-ECH

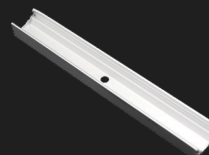


Endcap Solid  
LUM-P3535C-ECN

## ALUMINUM U-CHANNELS



0.5" Aluminum U-Channel  
(Set of 6)  
LUM-120505-U0



Aluminum U-Channel  
LUM-120505-XX (1ft or 4ft)

## COLOR OPTIONS:



Warm  
White  
3,000K



Natural  
White  
4,000K

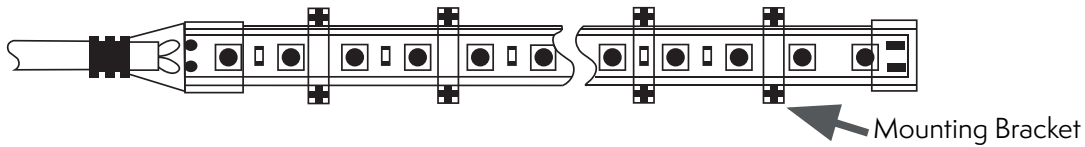


Cool  
White  
5,500K

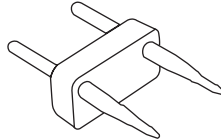
Channel Type:	SKU:	Channel Profile:	End Caps:	Channel Mockup:
Aluminum U-Channel	LUM-120505-XX (1ft or 4ft)		N/A	
PVC U-Channel	LUM-120505-PVCU4		N/A	
Aluminum Surface Mount Channel	LUM-P2114-XX (4ft or 8ft) <i>(Available in Silver or Black)</i>			
Aluminum Surface Mount Mega Channel	LUM-P3535C-XX (4ft or 8ft)			
Aluminum Recessed Channel	LUM-T3535C-XX (4ft or 8ft) <i>(Available in Silver or Black)</i>			

# INSTALLATION DIAGRAM : 120V LED STRIP LIGHTS

Using Lumilum® Mounting Bracket (LUM-120505-EC)

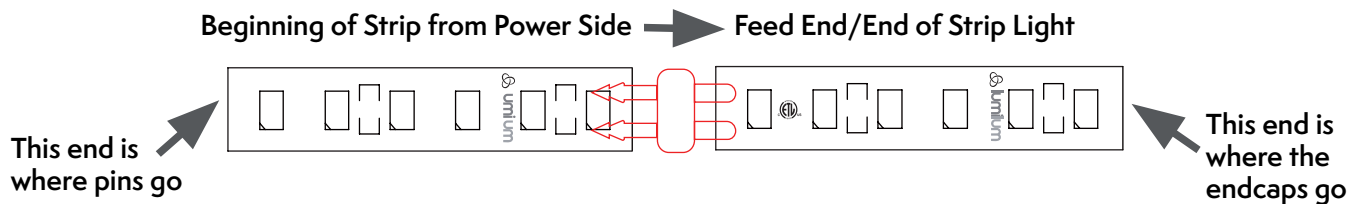


## ABOUT CONNECTING PINS AND STRIP POLARITY



1. Pins should never be fully inserted as this may cause damage to the internal copper wiring.

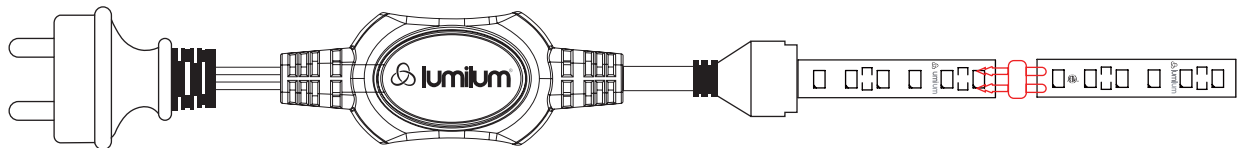
Insert pins correctly by only pushing them in about halfway between the sharp prongs and the plastic stopper.



2. Strip polarity and how it works; polarity is the direction in which the electrical current runs.

This is important to remember when setting up your LED strip lights because semiconductors only allow electrical currents to run one way.

Therefore, if you have the direction of the current wrong, electricity will not flow through and your strip will not illuminate.



3. Proper sealing (waterproofing) for outdoor applications

For a secure and professional finish, it's recommended that at least ONE of the following be used to seal any strip light that will be installed out doors:

- **Loctite - UV Light Curing Sealant**
- **Heat Shrink**
- **Electrical Grade Silicone**