

Shipping Dimensions & Weight: 13" x 13" x 6.5" inches, 20lbs



PRODUCT FEATURES:

ETL Certified

Dimmable

Cuttable every 12" inches (1 ft.)

Long runs with no voltage drop

50,000+ hours of rated life

UV protected and fire retardant



PERFORMANCE:

Color	Model	Color Temp.	CRI	Lumen/ft.	Beam Angles	Power Consumption/ft.	Voltage	Current/ft.
Antique Warm White	LUM-120505-2200K	2,200K	> 90	350	120°	3.5W	120V	0.03A
Ultra Warm White	LUM-120505-2700K	2,700K	> 90	380	120°	3.5W	120V	0.03A
Warm White	LUM-120505-3000K	3,000K	> 90	385	120°	3.5W	120V	0.03A
Natural White	LUM-120505-4000K	4,000K	> 90	390	120°	3.5W	120V	0.03A
Cool White	LUM-120505-5500K	5,500K	> 90	400	120°	3.5W	120V	0.03A
Blue	LUM-120505-BLUE	465nm	-	-	120°	3.5W	120V	0.03A
Red	LUM-120505-RED	626nm	-	-	120°	3.5W	120V	0.03A
Pink	LUM-120505-PINK	590nm	-	-	120°	3.5W	120V	0.03A
Green	LUM-120505-GREEN	525nm	-	-	120°	3.5W	120V	0.03A
Amber	LUM-120505-AMBER	560nm	-	-	120°	3.5W	120V	0.03A

USES:

- Cove, Soffit, Indirect Lighting
- Accent & Decorative Lighting
- Architectural Design & Wall Washing
- Restaurants, Hotels, Theaters
- Bridges, Columns, Exterior Structures
- Casinos, Nightclubs, Bars, Resorts
- Back-lit Signs, Retail Spaces, Window Displays
- Patios, Landscape Paths, Fences
- Gallery & Museum Lighting
- Under Cabinets, Tables, Toe-Kicks

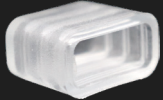
SPECIFICATIONS:

SKU:	LUM-120505
Available Colors:	2200K, 2700K, 3000K, 4000K, 5500K, Blue, Red, Pink, Green, & Amber
IP Rating:	IP65 (Indoor and Outdoor)
Voltage:	120V AC
Power Output:	3.5 Watts/ft.
Reel Length:	164 ft. (50 meters)
Dimensions:	0.58" X 0.32" Inches (W X H)
CRI:	> 90
LED Diodes:	20/ft.
Chip Type:	SMD 5050
Lumens:	350-400/ft.
Operating Temp:	-13°F ~ 113°F

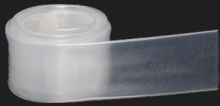
ACCESSORIES



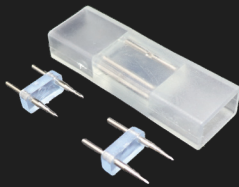
Mounting Clips (Set of 10)
LUM-120505-CL



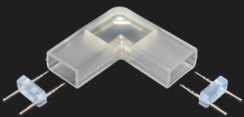
End Cap (Set of 2)
LUM-120505-EC



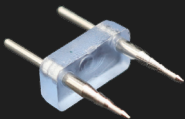
Shrink Wrap
LUM-SRKWAP-120B34
(Sold in 12" Increments)



Splice Connector
LUM-120505-IC



90° L Connector
LUM-120505-AC



Connecting Pin
LUM-120505-PSC



Waterproof Inline Connector
LUM-120505-IJT



4ft. Power Plug with Rectifier
LUM-120505-PP

CABLES



Interconnector Cable
LUM-120505CC-XX
(6in, 12in, 20in, 40in, & 10ft)



Extension Cable for Power Plug
LUM-120505-XT-XX
(10ft, 75ft, & 175ft)



5ft. Interconnector Cable
Round Water Resistant
LUM-120505RH-5FT



8ft. Y Connector Cable
LUM-120505-YCO



2 Conductor SJTW Cable
LUM-120505JW2X-500
(Sold in 12" Increments)



Splice Connector Cable
LUM-120505SH-XX
(5ft, 25ft, 50ft, & 100ft)

CONVERTER CABLES

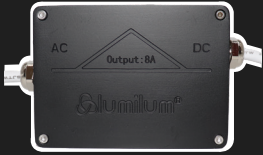


10in Static Color to DMX Converter
LUM-120505-SDMX



10in Static Color to DMX Converter
LUM-120505-RDMX

RECTIFIERS



Hardwired Rectifier
Junction Box
LUM-120505-JB

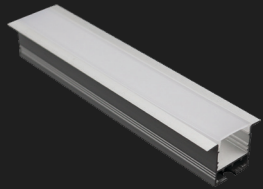


Compact Hardwired Rectifier
Junction Box
LUM-120505-CJB



Stroboscopic Effect Mitigator
LUM-120505-SNIX

RECESSED CHANNEL WITH DIFFUSER



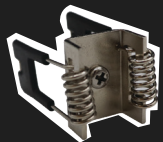
Aluminum Recessed Channel
LUM-T3535C-XX (4ft or 8ft)
(Available in Silver or Black)



Endcap with Hole
LUM-T3525-ECH
(Available in White or Black)

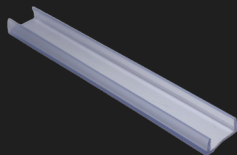


Endcap Solid
LUM-T3525-ECN
(Available in White or Black)



Channel Mounting Clip
LUM-T3525-CL

PVC U-CHANNEL

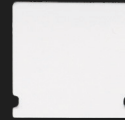


4ft. PVC U-Channel
LUM-120505-PVCU4
(Not Recommended for Outdoor)

SURFACE MOUNT CHANNEL WITH DIFFUSER



Aluminum Surface Mount
Channel
LUM-P2114-XX(4ft or 8ft)
(Available in Silver or Black)



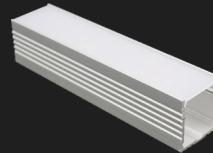
Endcap Solid
LUM-P2114-ECN
(Available in White or Black)



Endcap with Hole
LUM-P2114-ECH
(Available in White or Black)



Channel Mounting Clip
LUM-P2114-CL



Aluminum Surface Mount
Mega Channel
LUM-P3535C-XX (4ft or 8ft)

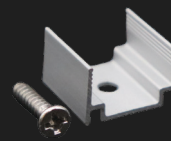


Endcap with Hole
LUM-P3535C-ECH

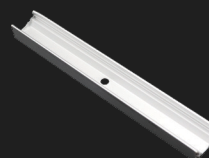


Endcap Solid
LUM-P3535C-ECN

ALUMINUM U-CHANNELS



0.5" Aluminum U-Channel
(Set of 6)
LUM-120505-U0



Aluminum U-Channel
LUM-120505-XX (1ft or 4ft)

INSTALLATION DIAGRAM : 120V LED STRIP LIGHTS



Antique Warm White
2,200K



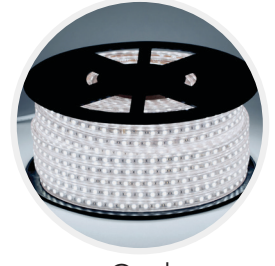
Ultra Warm White
2,700K



Warm White
3,000K



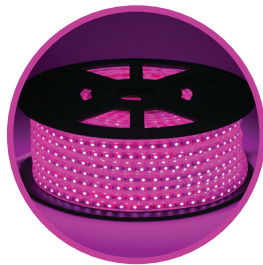
Natural White
4,000K



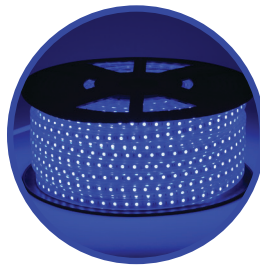
Cool White
5,500K



Red



Pink



Blue



Green

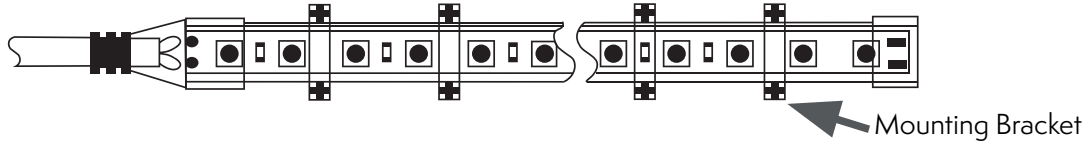


Amber

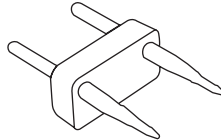
Channel Type:	SKU:	Channel Profile:	End Caps:	Channel Mockup:
Aluminum U-Channel	LUM-120505-XX (1ft or 4ft)		N/A	
PVC U-Channel	LUM-120505-PVCU4		N/A	
Aluminum Surface Mount Channel	LUM-P2114-XX (4ft or 8ft) <i>(Available in Silver or Black)</i>			
Aluminum Surface Mount Mega Channel	LUM-P3535C-XX (4ft or 8ft)			
Aluminum Recessed Channel	LUM-T3535C-XX (4ft or 8ft) <i>(Available in Silver or Black)</i>			

INSTALLATION DIAGRAM : 120V LED STRIP LIGHTS

Using Lumilum® Mounting Bracket (LUM-120505-EC)

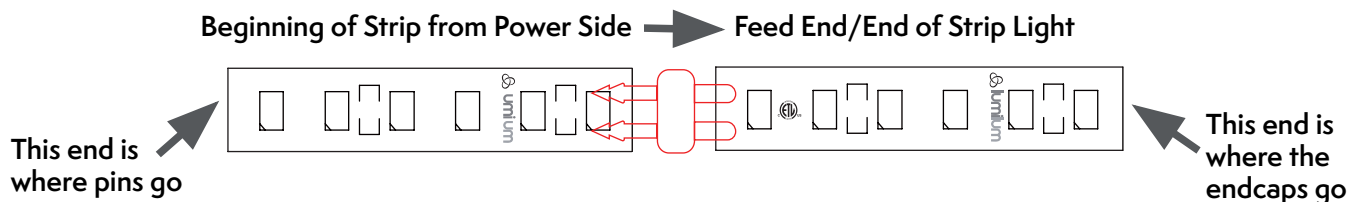


ABOUT CONNECTING PINS AND STRIP POLARITY



1. Pins should never be fully inserted as this may cause damage to the internal copper wiring.

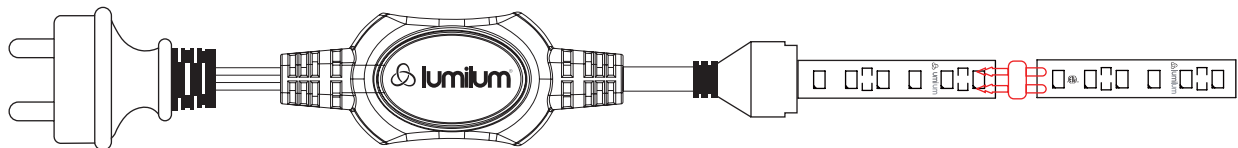
Insert pins correctly by only pushing them in about halfway between the sharp prongs and the plastic stopper.



2. Strip polarity and how it works; polarity is the direction in which the electrical current runs.

This is important to remember when setting up your LED strip lights because semiconductors only allow electrical currents to run one way.

Therefore, if you have the direction of the current wrong, electricity will not flow through and your strip will not illuminate.



3. Proper sealing (waterproofing) for outdoor applications

For a secure and professional finish, it's recommended that at least ONE of the following be used to seal any strip light that will be installed out doors:

- **Loctite - UV Light Curing Sealant**
- **Heat Shrink**
- **Electrical Grade Silicone**