

Shipping Dimensions & Weight: 10.5" x 10.5" x 6" inches, 10.4lbs



PRODUCT FEATURES:

ETL Certified

Dimmable

Cuttable every 4" inches

Uniform illumination - no glare or dark spaces

More flexible than traditional LED strip lights

UV protected and fire retardant



SPECIFICATIONS:

SKU:	LUM-120COB
Available Colors:	2200K, 2700K, 3000K, 3500K, 4000K, & 5500K, Red, Blue, Green, and Pink
IP Rating:	IP65 (Indoor and Outdoor)
Voltage:	120V AC
Power Output:	3.05 Watts/ft.
Reel Length:	164 ft. (50 meters)
Dimensions:	0.46" X 0.20" Inches (W X H)
CRI:	> 90
LED Diodes:	170/ft.
Chip Type:	COB 922
Lumens:	330-390/ft.
Operating Temp:	-14°F ~ 113°F

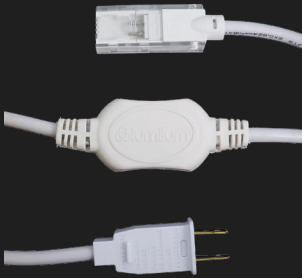
PERFORMANCE:

Color	Model	Color Temp.	CRI	Lumen/ft.	Beam Angle	Power Consumption/ft.	Voltage	Current/ft.
Antique Warm White	LUM-120COB-2200K	2,200K	> 90	330	120°	3.05W	120V	0.03A
Ultra Warm White	LUM-120COB-2700K	2,700K	> 90	360	120°	3.05W	120V	0.03A
Warm White	LUM-120COB-3000K	3,000K	> 90	365	120°	3.05W	120V	0.03A
Modern Warm White	LUM-120COB-3500K	3,500K	> 90	370	120°	3.05W	120V	0.03A
Natural White	LUM-120COB-4000K	4,000K	> 90	375	120°	3.05W	120V	0.03A
Cool White	LUM-120COB-5500K	5,500K	> 90	390	120°	3.05W	120V	0.03A
Red	LUM-120COB-RED	-	-	-	120°	3.05W	120V	0.03A
Blue	LUM-120COB-BLUE	-	-	-	120°	3.05W	120V	0.03A
Green	LUM-120COB-GREEN	-	-	-	120°	3.05W	120V	0.03A
Pink	LUM-120COB-PINK	-	-	-	120°	3.05W	120V	0.03A

USES:

- Commercial Building Exteriors & Signage
- Cove, Soffit, Indirect Lighting
- Accent & Decorative Lighting
- Architectural Design & Wall Washing
- Restaurants, Hotels, Spas, Theaters
- Bridges, Columns, Fences
- Bookshelves & Display Cases
- Gallery & Museum Lighting
- Under Cabinets, Tables, Toe-Kicks
- Staircase, Handrail, Step Lighting

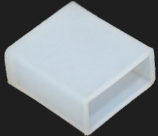
ACCESSORIES



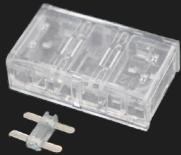
Power Plug with Rectifier
LUM-120COB-PP



Mounting Bracket (Set of 10)
LUM-120COB-CL

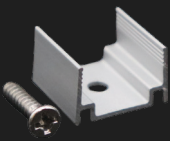


End Cap (Set of 2)
LUM-120COB-EC

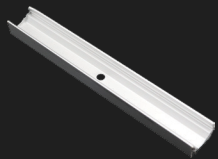


Splice Connector
LUM-120COB-IC

ALUMINUM U-CHANNELS



0.5" Aluminum U-Channel
(Set of 6)
LUM-120COB-U0



Aluminum U-Channel
LUM-120COB-XX (1ft or 4ft)
(Available in Silver, Black, or White)

CABLES



5ft. Splice Connector
Cable
LUM-120COB-SH-5FT



Interconnector Cable
LUM-120COB-CC-XX
(6in, 12in, 20in, 40in, & 10ft)

RECTIFIERS



Hardwired Rectifier Junction Box
LUM-120505-JB

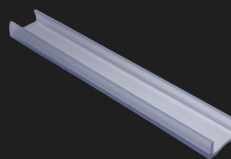


Compact Hardwired Rectifier
Junction Box
LUM-120505-CJB



Stroboscopic Effect Mitigator
LUM-120505-SNIX

PVC U-CHANNEL



4ft. PVC U-Channel
LUM-120COB-PVC
(Not Recommended for Outdoor)

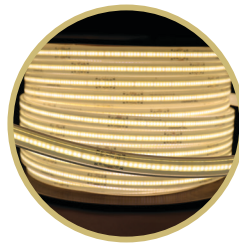
COLOR OPTIONS:



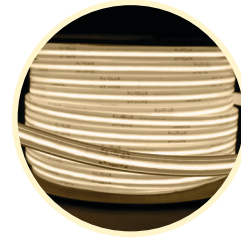
Antique
Warm White
2,200K



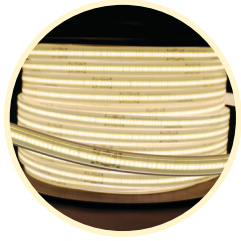
Ultra
Warm White
2,700K



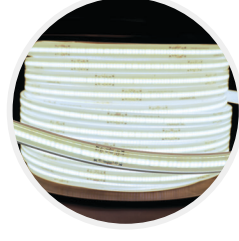
Warm
White
3,000K



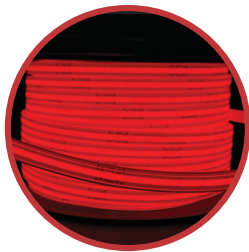
Modern Warm
White
3,500K



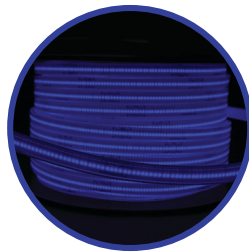
Natural
White
4,000K



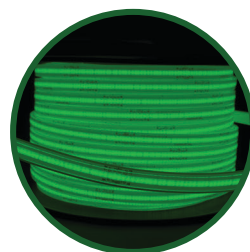
Cool
White
5,500K



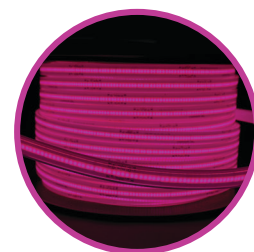
Red



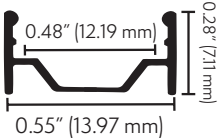

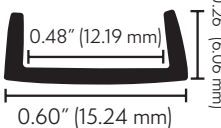
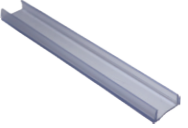
Blue



Green



Pink

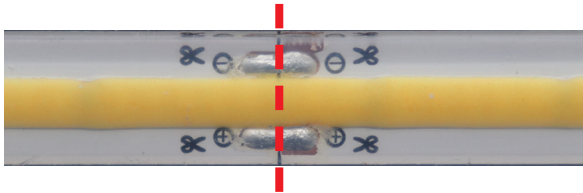
Channel Type:	SKU:	Channel Profile:	End Caps:	Channel Mockup:
Aluminum U-Channel <i>*For all areas</i>	LUM-120COB-PVC (4ft)		N/A	
PVC U-Channel <i>*Indoor reccomended only</i>	LUM-120COB-XX (1ft or 4ft)		N/A	

INSTRUCTIONS: CUT & POWER 120V COB

WARNING: Always work with the LED strip disconnected from power to avoid electric shock.


Materials Needed:

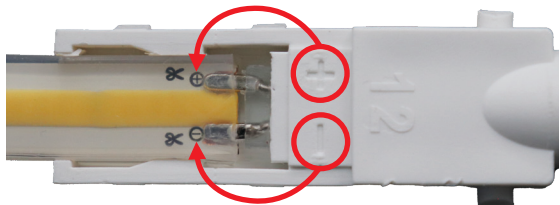
- 120V COB LED strip light
- Sharp scissors or strip light cutting tool
- Lumilum COB connector (power plug, interconnector cable, or end-to-end strip connector + included connecting pin)



1. Identify where you will be splicing. Using sharp scissors, make a straight cut along the marked cutting point (located every 4 inches) on the COB strip until it splits.



2. Take the included 2-prong connecting pin and ensure the round bottom is facing down.  Insert the short side of pin into the strip end, creating a visible separation of the silicone layer and exposing the metal connection points. To make a proper connection, insert pins at a downward angle and feel the pin graze against the contact points.



3. Because polarity only runs one way, locate the + and - on the power plug or COB connector and ensure the strip direction matches. Now insert the long side of the pin into the holes on your COB connector piece.



4. Plug in the strip to ensure it's working as intended - this step prevents any potential issues after installation. If the strip illuminates, you may now utilize the plastic fitting included with your COB connector piece to secure the connection.

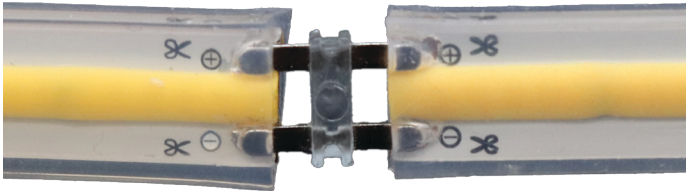
TROUBLESHOOTING:

Polarity: The strip light does not illuminate, take polarity into account and ensure you have connected the strip in the proper direction. This can be done by checking that the + and - on the strip matches the direction of the + and - on the COB connector piece (see step 3).

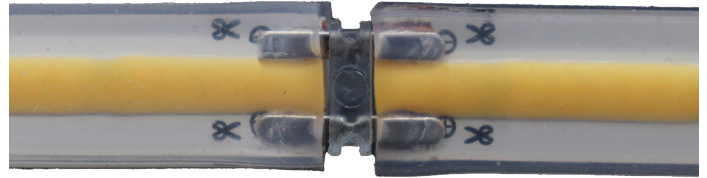
Contact Issue: If it's confirmed that the strip is in the correct direction, re-check your pin connection - it may be that there is silicone in the way of the contact points. Separate the silicone layer (see step 2) and re-insert the connecting pin, feeling the metal graze the contact point metal. This should fix any contact issues being experienced.

INSTRUCTION CUT + CONNECT:

1. With your cut piece of COB strip light in hand, slide the included metal pin (round bottom facing downward) into the silicone, over the metal connection points. Be sure to feel the scrape of the metal pin against the metal connection points or risk hindered contact.



2. Now, with the other cut piece of COB strip light you want to connect to the piece that already has the pin, repeat the instructions above. Once both cut ends have been joined and share a metal pin, you can lay the joined strip into the included small plastic connector piece so the teeth will hold the section in place. Do not snap the top plastic piece on yet!



3. Before snapping the top of the plastic connector piece closed you'll want to test your linked segment by plugging the strip end with power into an outlet. If it illuminates, you're all set and can snap the other plastic connector piece onto the one holding your strips to secure and hold the connection in place. If no illumination occurs, check either the strip polarity (goes only one way, and can be noted by + and - signs on the strip and connector piece) or direction of the connecting pin (should be round bottom facing down) and ensuring that it is inserted into the strip end with no silicone in between the metal pin and metal connection point in strip.

4. Once everything has been checked (or reset if needed), repeat step 3 to test. If illumination occurs, you can snap the top plastic piece to secure the joint sections and enjoy your connected COB strip lighting.

