



**PRODUCT FEATURES:**

**SKU:** LUM-RGBUX8

4 Zone Color Control

**Input:** 5VDC, 0.5A-1A (w/ included transformer)

**Output:** 120VDC

**Output Signal:** RF 2.4 GHz, DMX512

**DMX Signal Input Connections:**

3 or 5-pin DMX (XLR), Cat 5 (RJ45), Cat 6 Cables

**DMX Signal Thru Connections:**

3 or 5-pin DMX (XLR), Cat 5 (RJ45), Cat 6 Cables

**Product Dimensions:** 5.75" x 4.17" x 0.73"

**Shipping Dimensions:** 16" x 11.03" x 5.71"

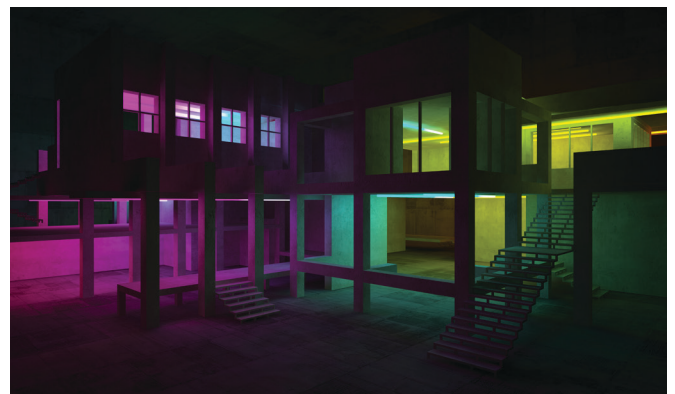
**Weight:** 8 oz

**Operating Temperature:** -22°F ~ 131°F

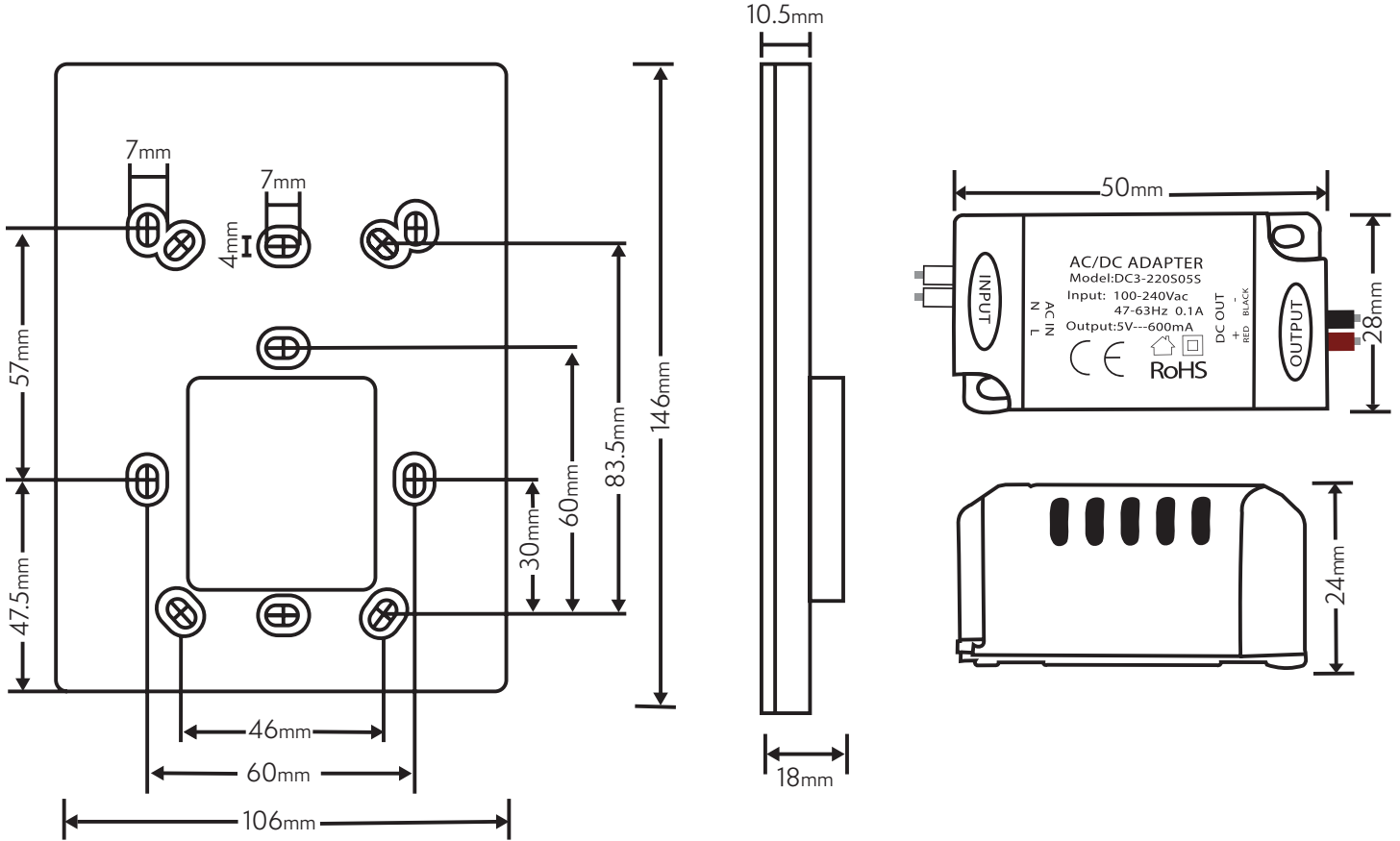
**Not Recommended for Outdoor Use**



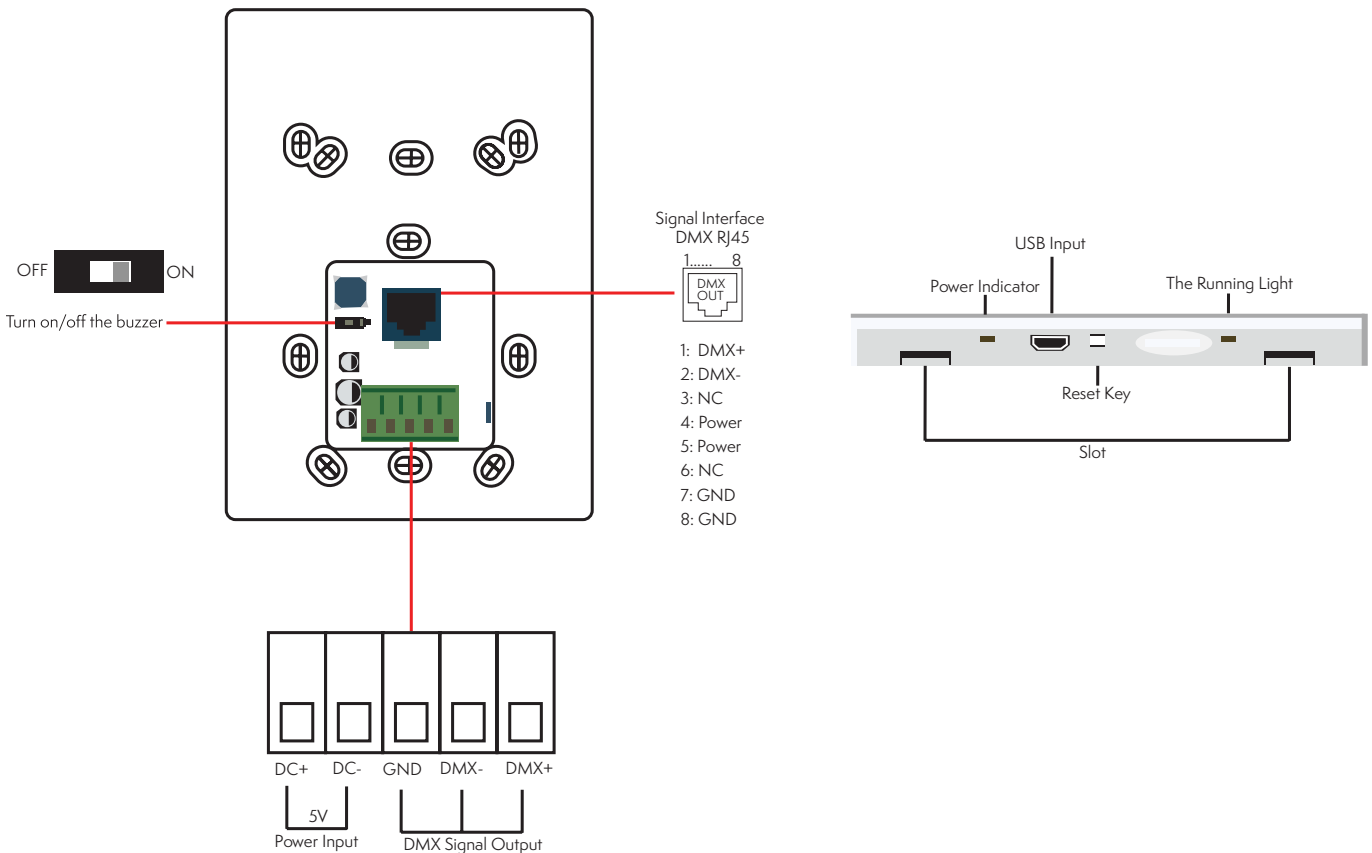
**USES:**



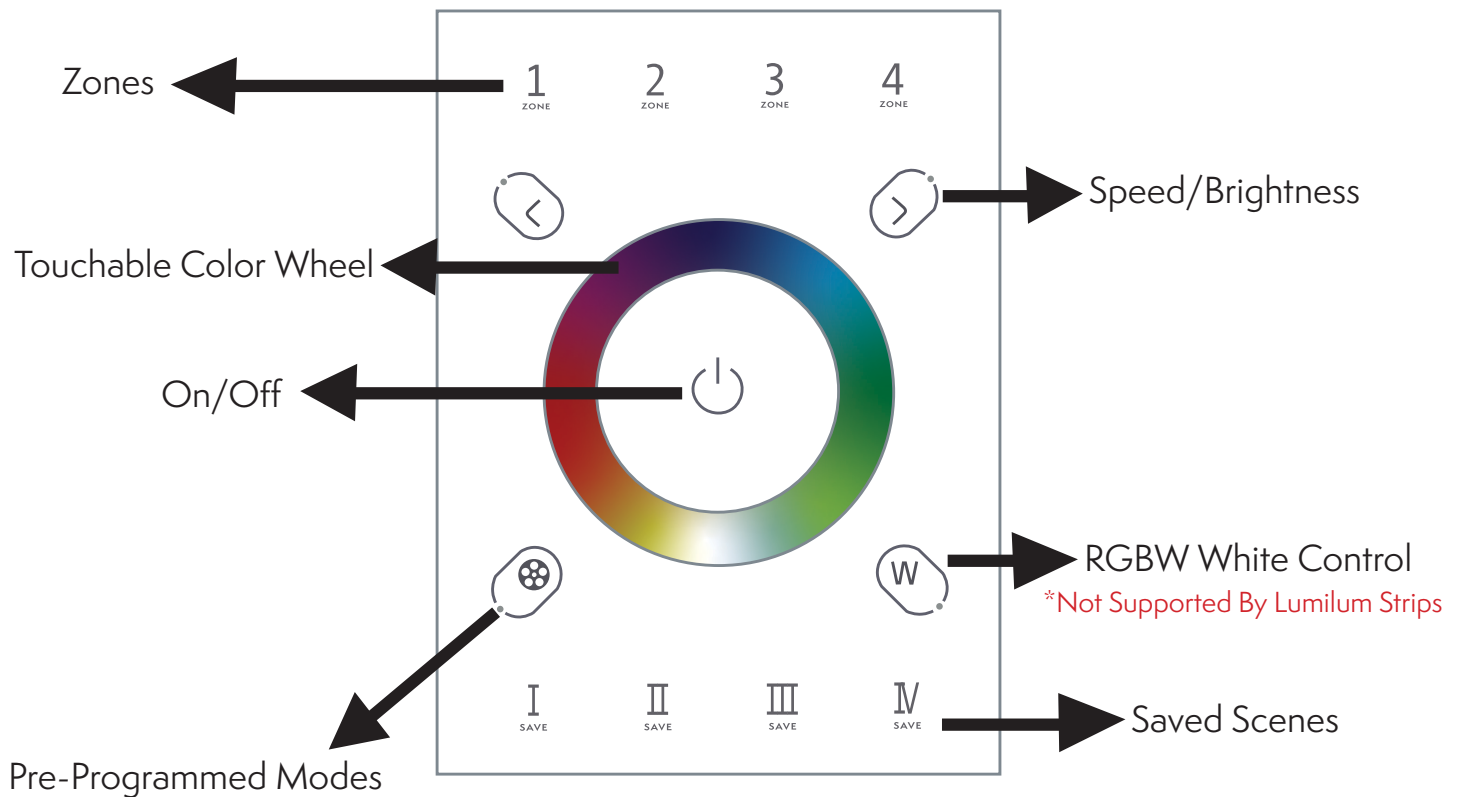
# PRODUCT SIZE:



# TERMINALS:



# BUTTON FUNCTIONS DIAGRAM:



## Pre-Programmed Modes

- |                     |                  |
|---------------------|------------------|
| 1. Static Red       | 2. Static Green  |
| 3. Static Blue      | 4. Static Yellow |
| 5. Static Purple    | 6. Static Cyan   |
| 7. Static White     | 8. RGB Jumping   |
| 9. 7 Colors Jumping | 10. RGB Smooth   |
| 11. 7 Colors Smooth |                  |

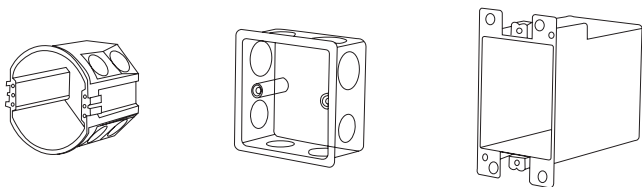
## **HOW TO USE COLOR WHEEL CONTROL PANEL (LUM-RGBUX8)**

Upon initialization all buttons will be illuminated - press zone number to deselect.

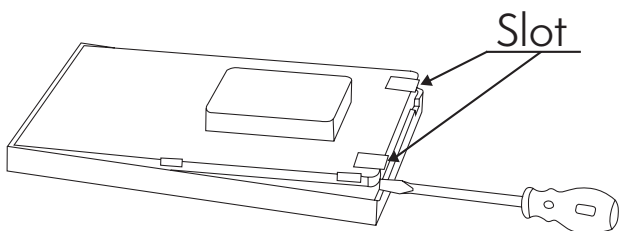
Set up the first zone by pressing Z1 and choose your color or mode function. When adding a second strip to the DMX module that is to be independently controlled, add another zone switch your DMX to ADD2, press button 4/enter, and toggle using buttons 2 and 3 until you reach a secondary zone address (A--5, A--9, A-13)

# INSTALLATION INSTRUCTIONS:

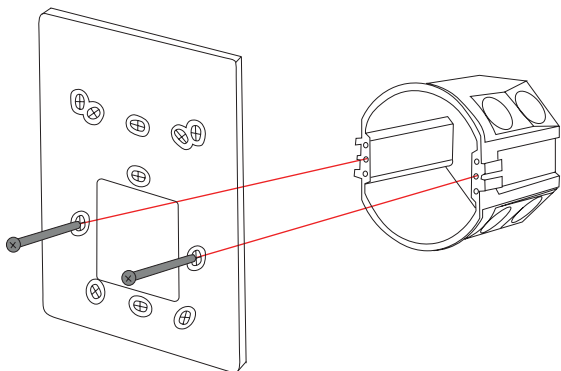
1. Install the back box into the wall, these are some examples of typical back boxes:



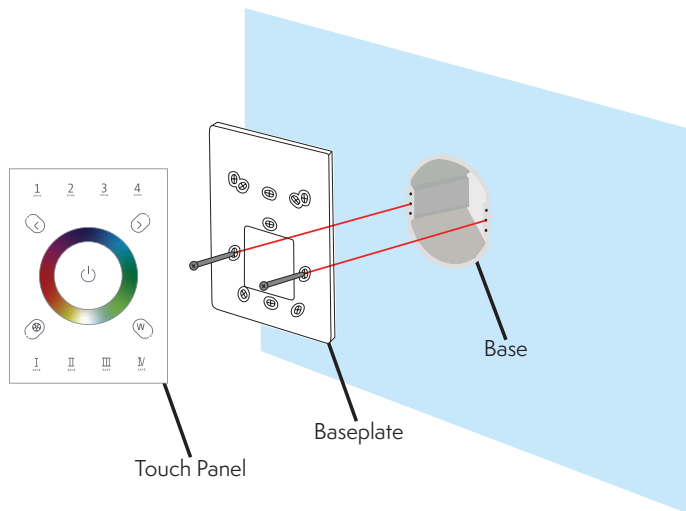
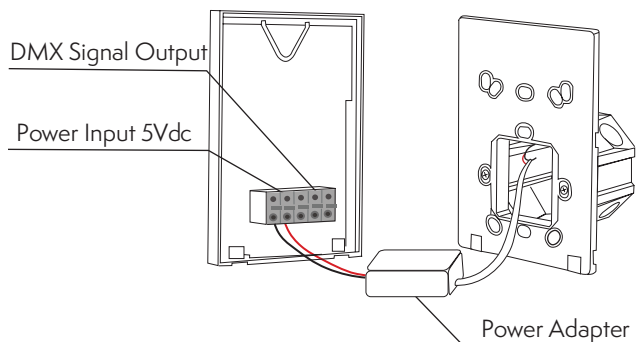
2. Use a straight screwdriver to pry the position shown below:



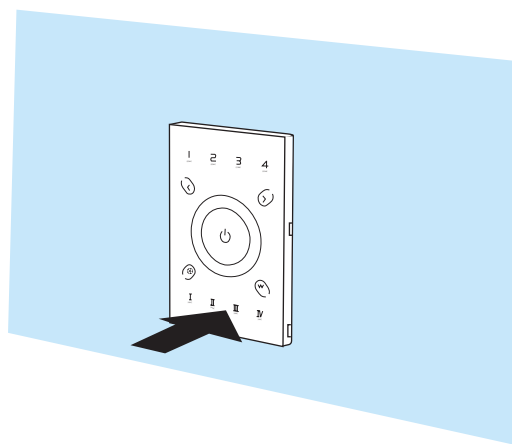
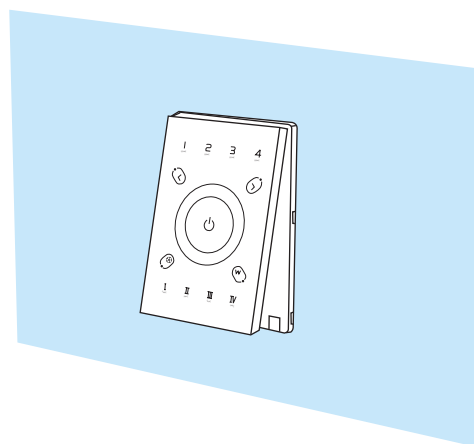
3. Screw the base plate and the back box securely into the wall:



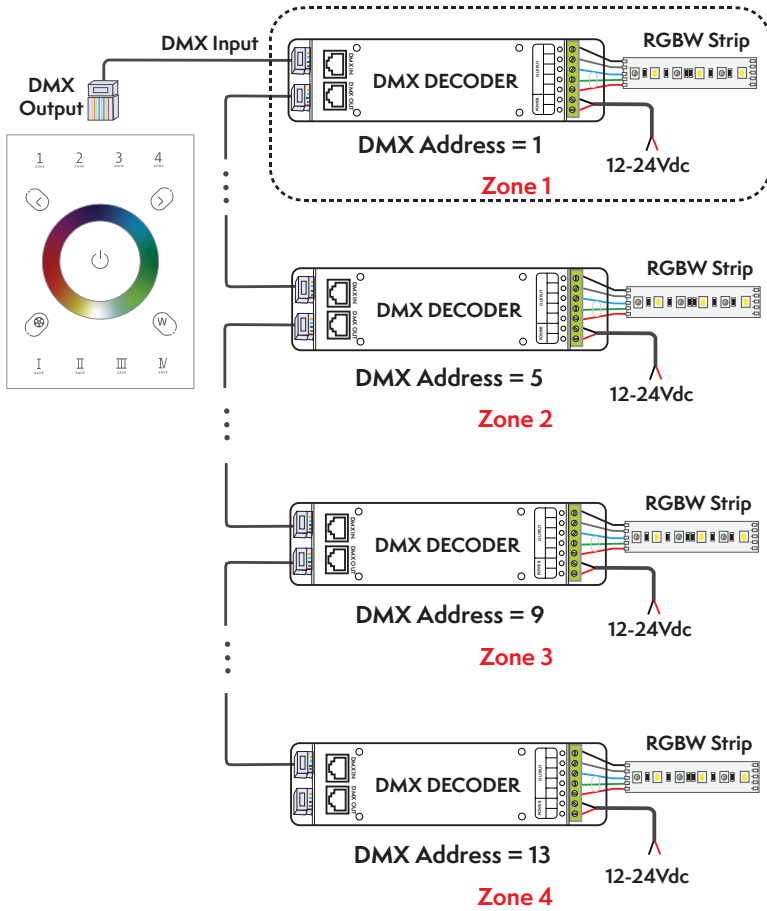
4. Connect the black and red wires and put the power adapter in the back box:



5. Embed the upper touch panel into the baseplate and then tap the bottom to press into the slots:



# DMX OUTPUT WIRING:

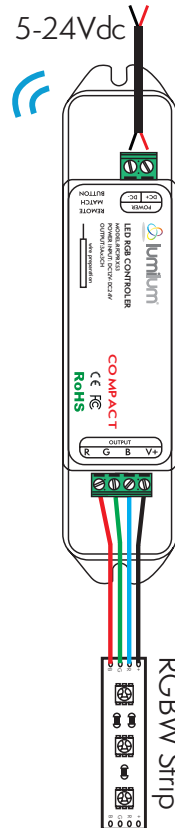
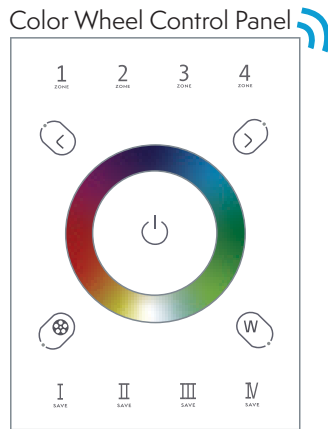


Can be used with the following Lumilum products for low voltage installations:

*LUM-DMX212 4X8A (768W @24V)*

*LUM-DMXWP2 (IP65) 4X5A (480W @ 24V)*

# RF WIRELESS WIRING:



\*Remote *LUM-RGBUX8-RC*

*ON/OFF functions only for zones*