



ISP



BOTANICALS



Vincience
ACTIVES

Suberlift™

A clinically proven oil soluble botanical instant smoothing tensor that provides lift and firming to skin.

A

Description

B

Mode of action

C

**Cosmetic
efficiency**

D

**Technical
information**

A

Description



Definition

Composition

Properties

Description

Suberlift is a patented vegetal **tensor** active ingredient.

Suberlift is extracted from the **cork oak** *Quercus suber*, a very typical tree of the western Mediterranean region.

Suberlift offers a **visible, instant-smoothing** and **lifting** effect.

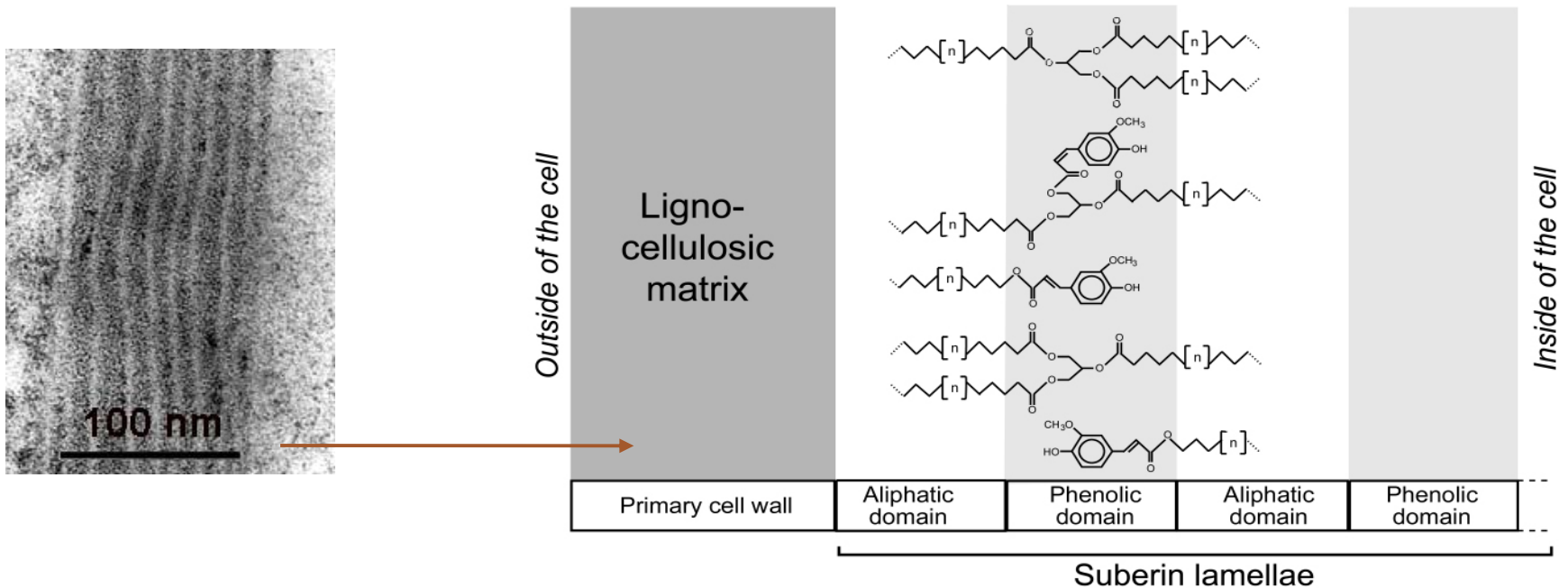
This tensor effect accounts for the presence of a hydrolyzed **suberin extract**.



Composition

Suberlift is composed of hydrolyzed suberin, a cross-linked polymer with **polyaromatic** and **polyaliphatic** domains linked to each other.

Ultrastructure of suberin



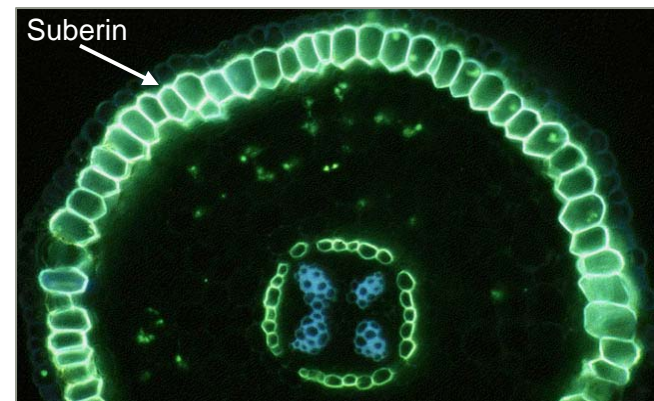
Suberin Properties

Suberin is a cross-linked polymer whose main function is to **seal off the tissues** against loss of water, nutrients and minerals.

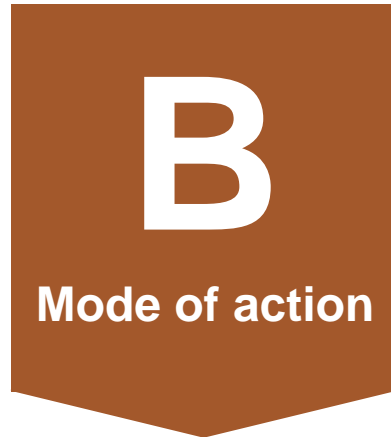
Suberin also contributes to the **strength** and the **protection** of plant cells.

Due to its specific structure, the biochemical and physical properties of suberin are:

- low permeability
- chemical stability
- heat resistance
- resistance to microbial attacks



Immunostaining of suberin



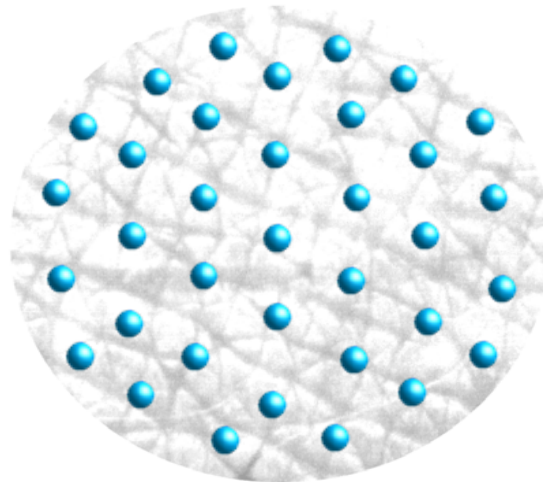
1. Microcrystalline particles

2. Binding capacity

3. Film forming capacity

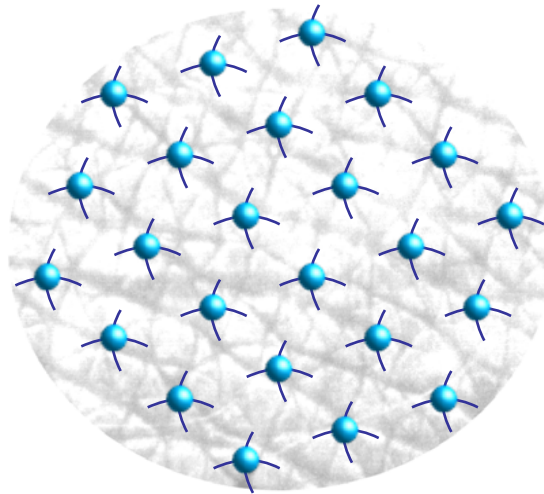
1. Microcrystalline particles

Due to its high content of suberin extract, Suberlift readily forms **microcrystalline particles** at room temperature, thus displaying plastic and thixotropic behavior.



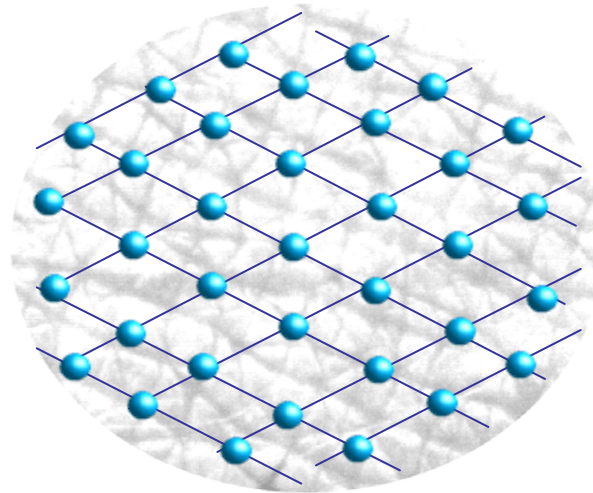
2. Binding capacity

Suberlift contains the hydrophobic and hydrophilic domains of the suberin polymer, and is capable of **binding easily with other molecules.**

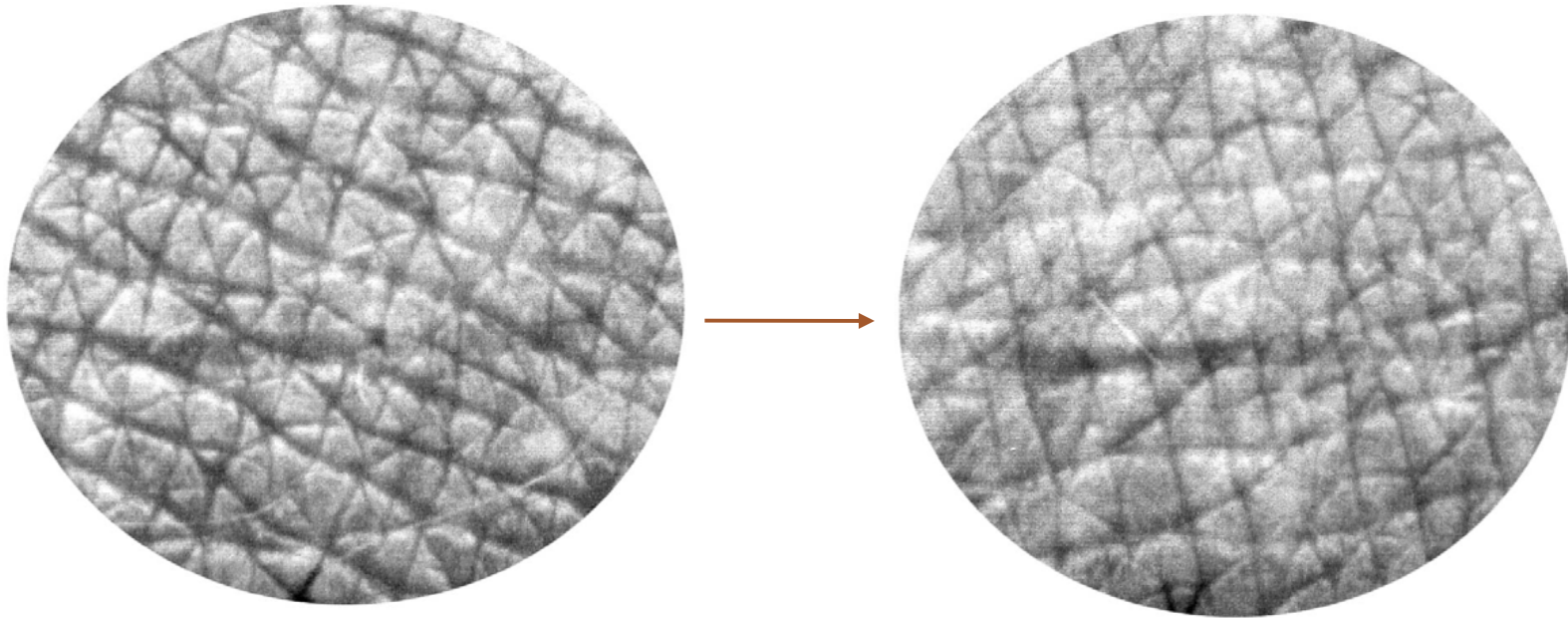


3. Film-forming capacity

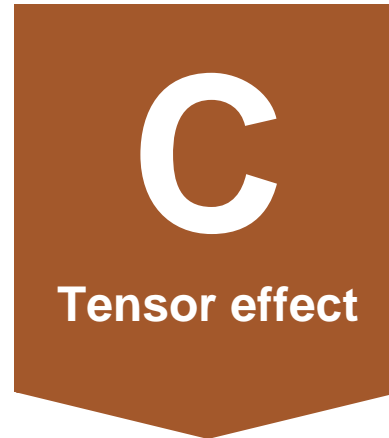
The aliphatic and phenolic domains of suberin are endowed with special chemical properties that evoke a possible **re-arrangement** and a **smoothing effect** on the surface of the skin.



Mode of action



Instant-smoothing and tightening effect of Suberlift



Statistical results

Clinical pictures

2D representations

Clinical tensor effect

Protocol of the study

Type: double blind study against placebo

Subjects: 15 healthy volunteers, age 22 to 52

Product application: Suberlift at 3% in a gel

Treated zone: 30 cm² in each forearm

Application time: 1 and 2 hours

Evaluation: pictures, silicone replicas, and statistical analysis

Clinical tensor effect statistical results 1 h and 2 h after application

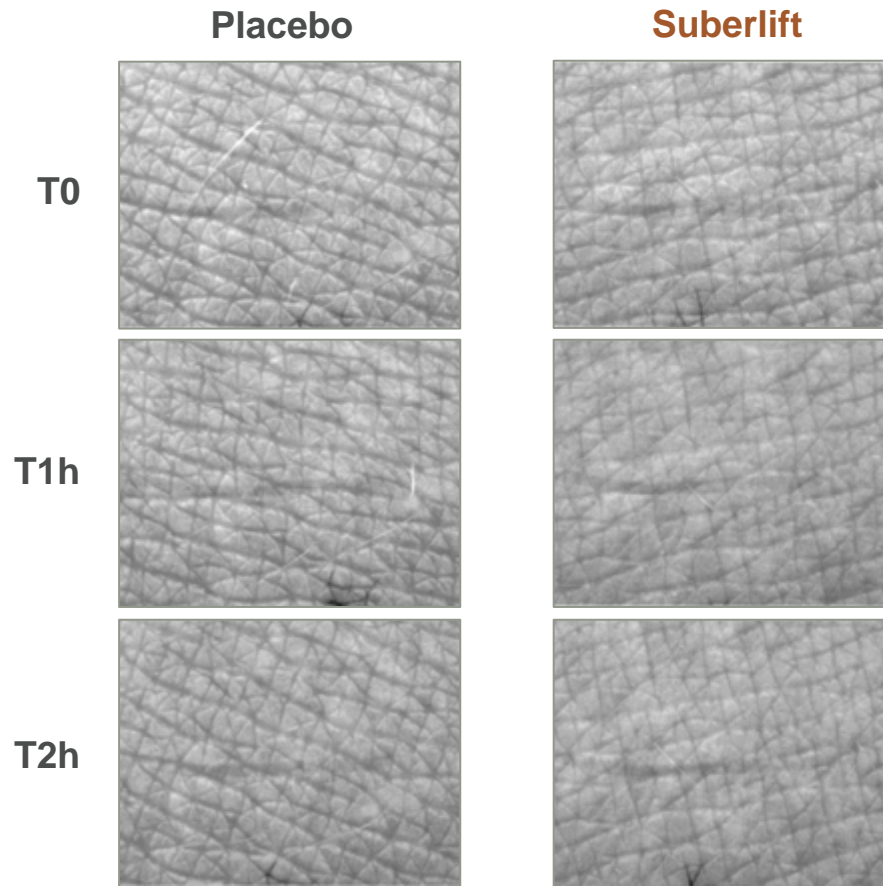
Instant smoothing tensor effect evaluated by:
 statistical treatment (McNemar test) on clinical pictures

	Reduction of roughness	Statistical significance (p)
1h after Suberlift application	73.3%	0.0098*
2h after Suberlift application	78.6%	0.0008**

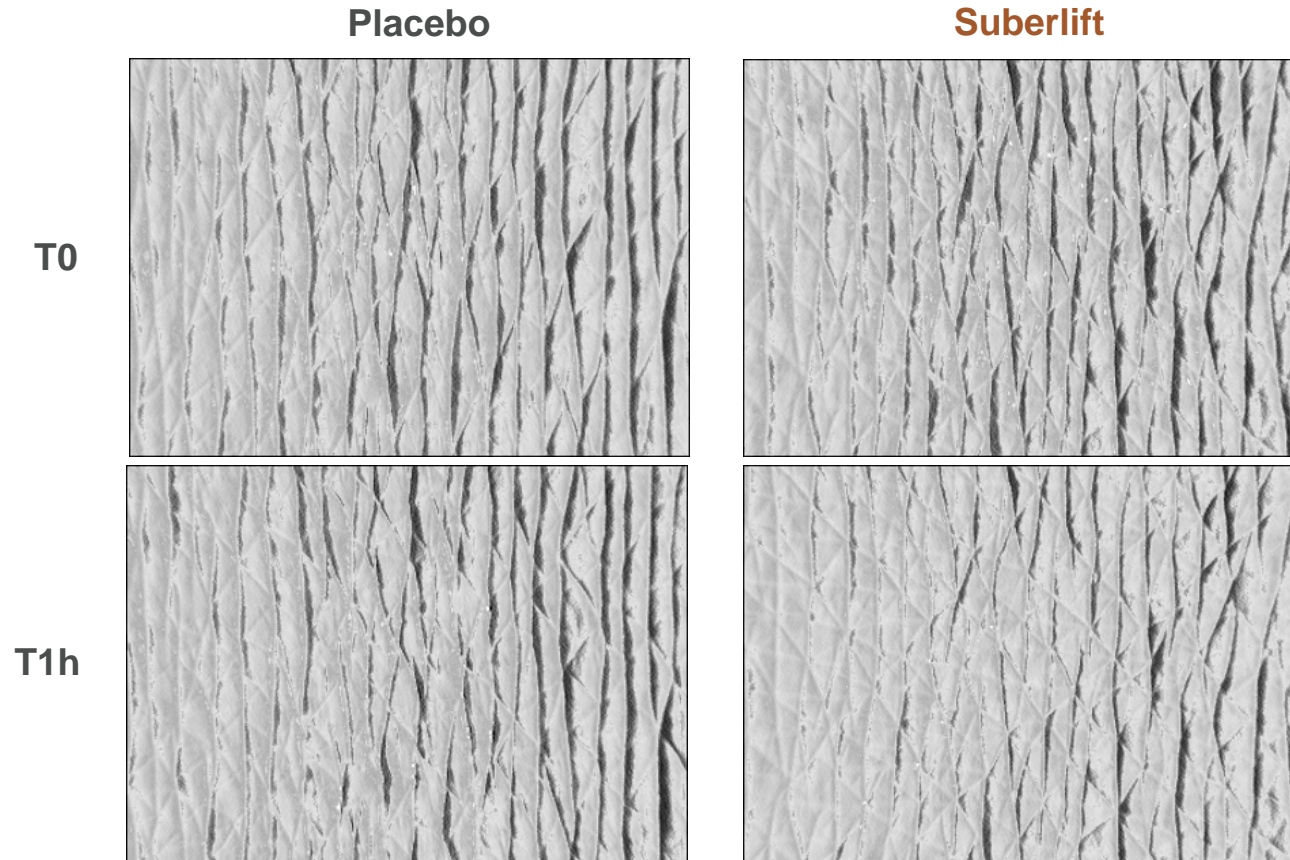
*: very significant

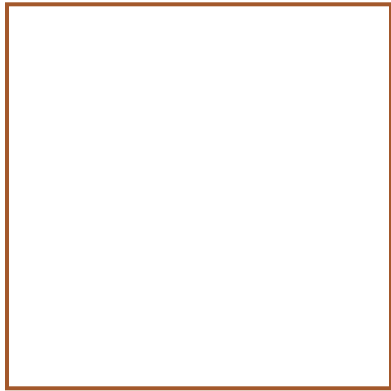
**: highly significant

Clinical tensor effect Pictures 1 h & 2 h after application



Clinical tensor effect 2D representations of silicon replicas





Cosmetic applications

Suberlift is recommended in the following cosmetic products:

- Instant flash, tightening products
- Face care lifting serums
- Neck area
- Eye zone area
- Lip zone area
- Body care products

Recommended use level: 3%, clinically tested at 3%

Contact Details

WORLD HEADQUARTERS

INTERNATIONAL SPECIALTY PRODUCTS 1361 Alps Road, Wayne, New Jersey 07470, USA

Tel: +1 973 628-4000 Fax: +1 973 628-3311 www.ispcorp.com info@ispcorp.com

CUSTOMER SERVICE: Toll Free: 1 (800) 622-4423 Fax: +1 973 628-4001

SAMPLE CENTER: Toll Free: 1 (800) 243-6788 isp@chemicalmarketing.com

REGIONAL SALES OFFICES

NORTH AMERICA

LOMBARD, ILLINOIS

Toll Free: 1 (800) 323-2272

Tel: +1 630 932-4022

Fax: +1 630 495-0245

personalcareinfo@ispcorp.com

LATIN AMERICA

SÃO PAULO, BRAZIL

Tel: +55 11 3649-0469

+55 11 3649-0477

Fax: +55 11 3643-1585

ispbrasil@ispcorp.com

EUROPE

COLOGNE, GERMANY

Tel: +49 (0) 2236 9649-260

+49 (0) 2236 9649-264

+49 (0) 2236 9649-266

Fax: +49 (0) 2236 9649-295

info.germany@ispcorp.com

ASIA PACIFIC

SOUTHPOINT, SINGAPORE

Tel: +656 223-3778

Fax: +656 226-0853

atye@ispcorp.com

GLOBAL SKIN RESEARCH CENTRE

ISP VINCIENCE

SOPHIA ANTIPOLIS, FRANCE

655, Route du Pin Montard, BP 212

06904 Sophia Antipolis Cédex, France

Tel: +33 (0) 4 92 94 16 06

Fax: +33 (0) 4 92 94 16 00

info.vincience@ispcorp.com