



5th Gen 4Runner Storage Panels

Tools Required:

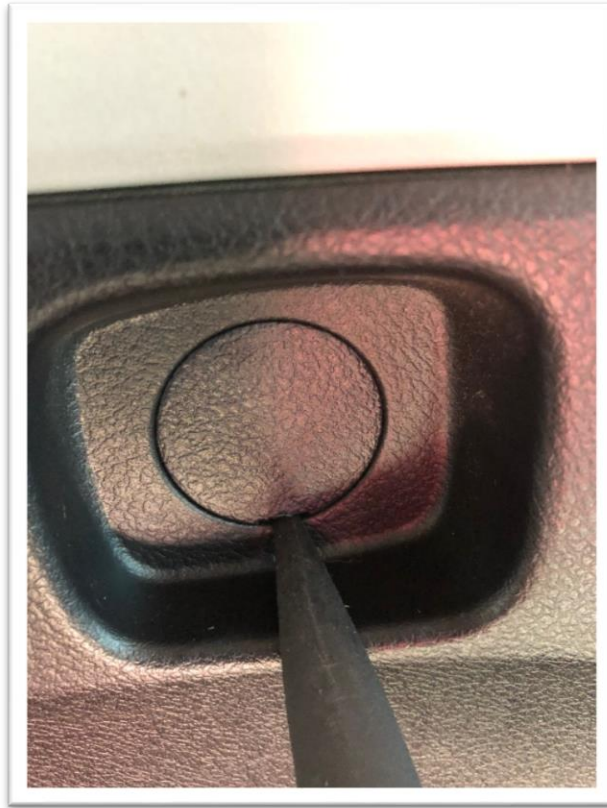
- *Philips screw driver*
- *5mm Allen key*
- *10mm socket/ratchet*
- *10mm wrench*
- *Plastic pick or small flat headed screw driver.*

1. Start by removing the factory cargo net attachment. Just turn it with your hand counter clock wise and it will come right off. You can now remove the bolt with a Philips screw driver.

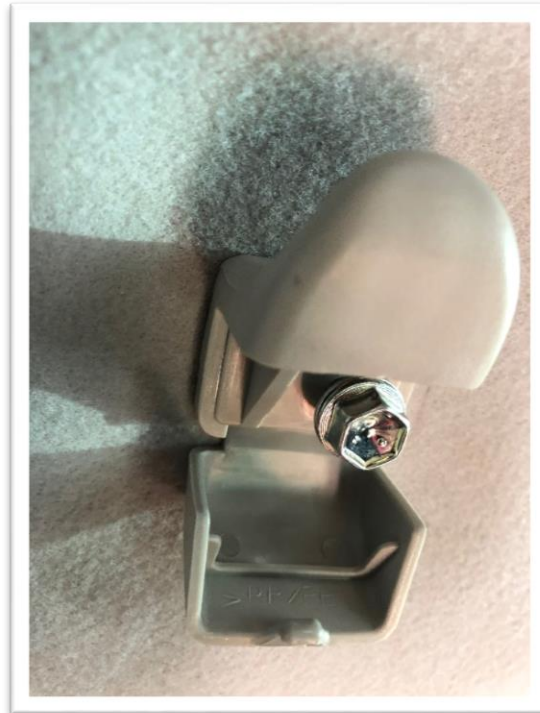


BPF

2. Next use your plastic pick and pop off the OEM cover. You can use a Philips or a 10 mm socket to remove the bolt under the cover. You will not need to save this bolt.



3. Moving on to the coat hanger rack up top. Use your plastic pick and pop open the hanger. Using a ratchet, remove the 10mm bolt set this aside as you will be re using it.

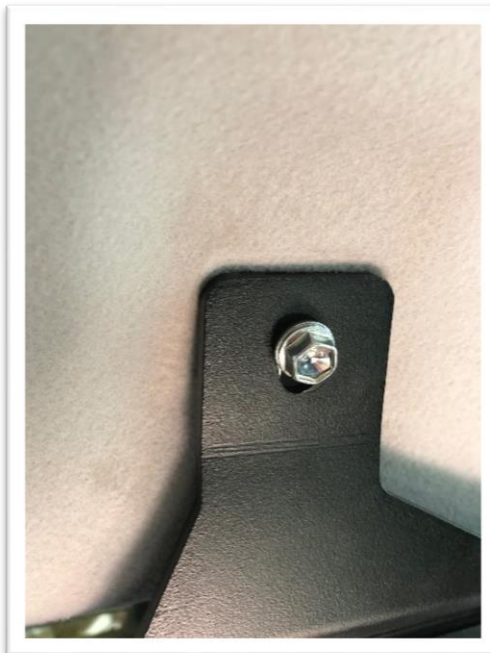


BPF

4. It makes the install easy to attach the bracket to the storage rack first. Using the provided hardware, find the three "smallest bolts" and attach the two components together. Skip ahead to see the completed photos of the bracket installed to ensure you are mounting it in the correct way/position.



5. Using the factory bolt mount up the storage panel. Start by threading the bolt half way.

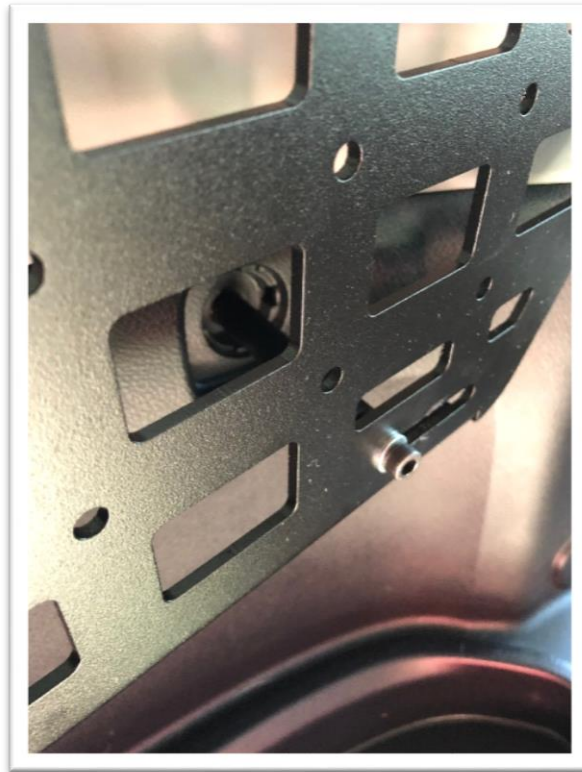


BPF

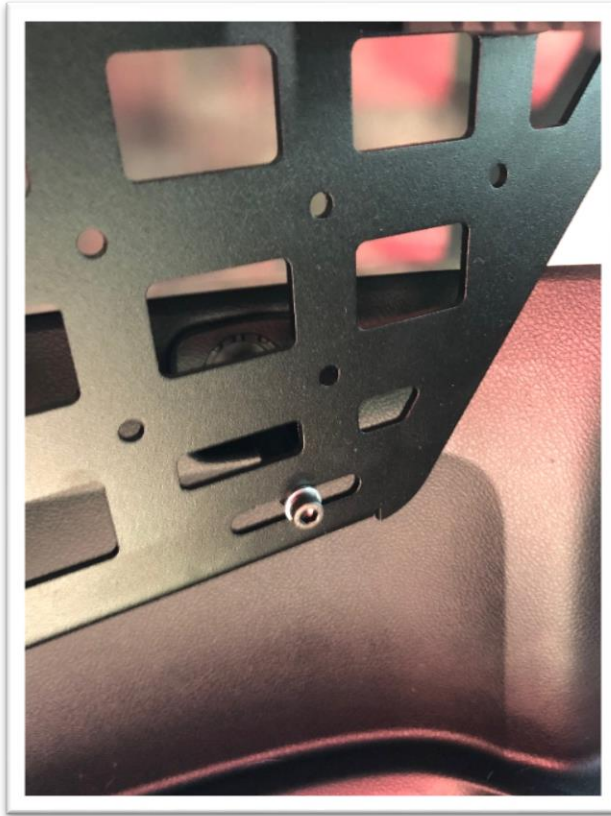
6. While the rack is loose it is a good time to install any quick-fists if you have them.



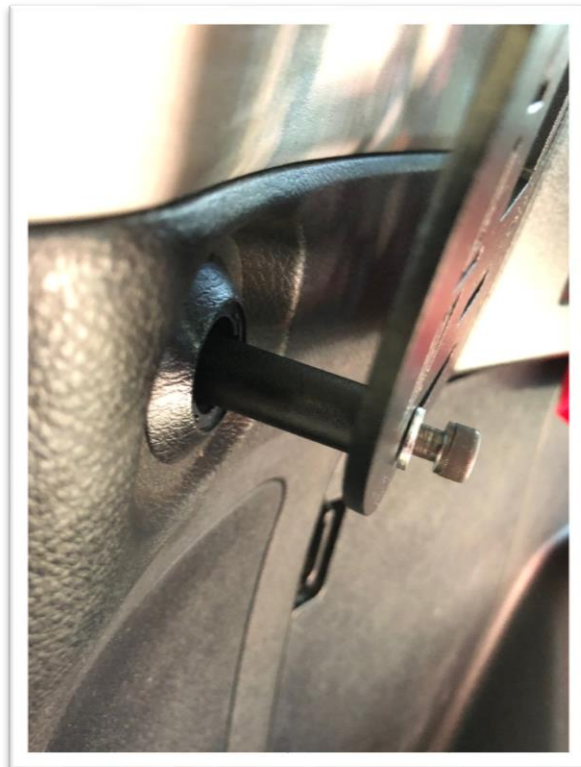
7. Now install the largest spacer and longest bolt at the back of the panel. Closest to the passenger seats.



BPF

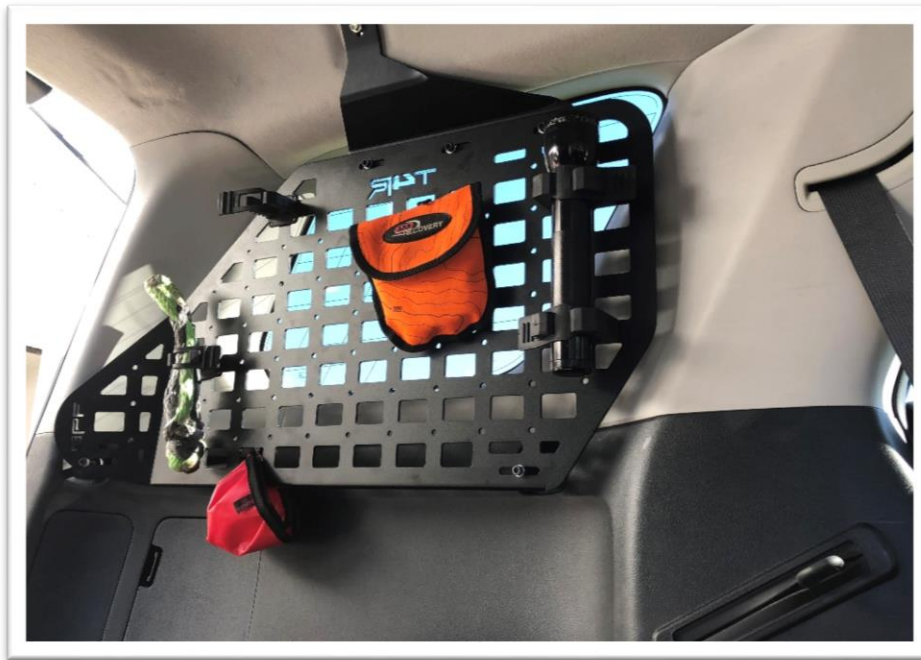


8. Grab the second largest bolt and spacer and install it in the mount closest to the tail light.



BPF

9. Align the panel in your desired location and tighten down all the bolts. You can also finish installing your accessories.





10. Use provided edge protector on bottle opener hook at all times when not in use to prevent injury.



Installation is now complete! Share your photos with us on social media @bpfabricating

***DISCLAIMER:** Please note BPF is not responsible for any injuries. This product has NOT been crash tested. By installing this product you are accepting any risk(s) that may occur. Please take caution when mounting items on panel. Make sure all items are securely fastened to the panel.*