



# INSTALLATION INSTRUCTIONS

2014-2015 Toyota 4Runner Grill

Please note: read entire instructions prior to installation

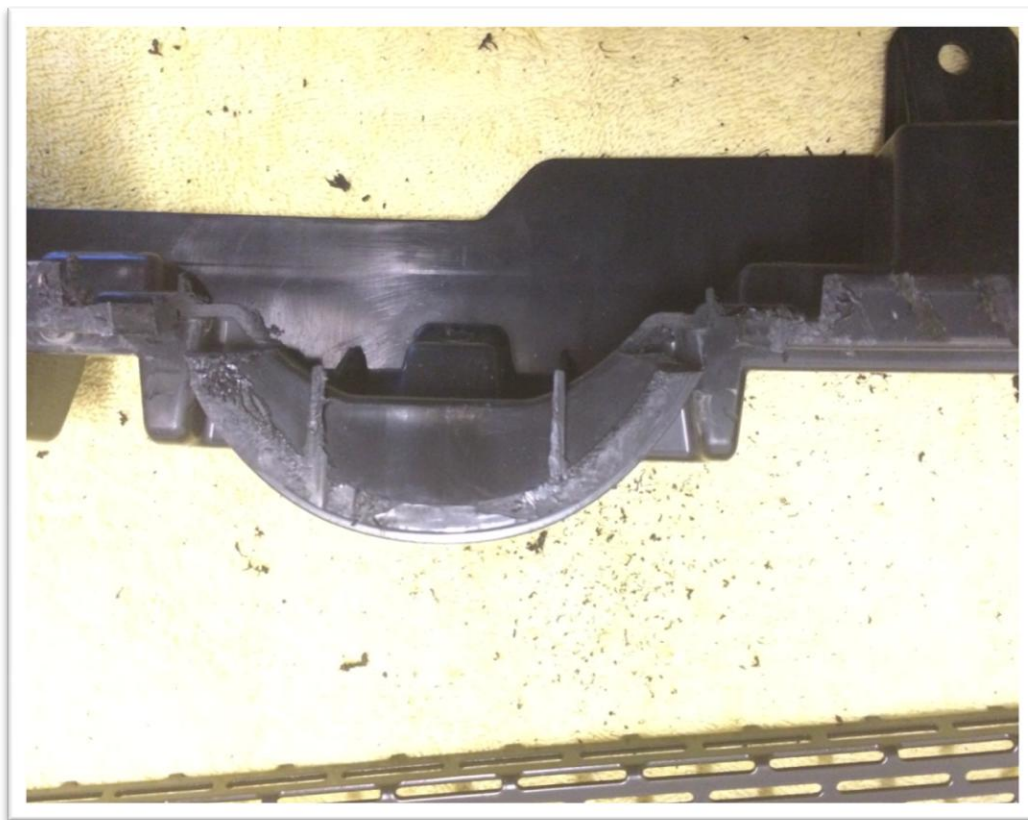
1. Start by taking the outer shroud off. You will need a Philips screw driver. Remove the screws and separate the 2 pieces so it will look like this. Put outer shroud aside for now.



2. Next cut out the center logo. If you have a Dremel tool, use it. It makes this mod a lot faster.



3. Next you will need to notch a small spot for the mesh to slide into where the mesh will be going.



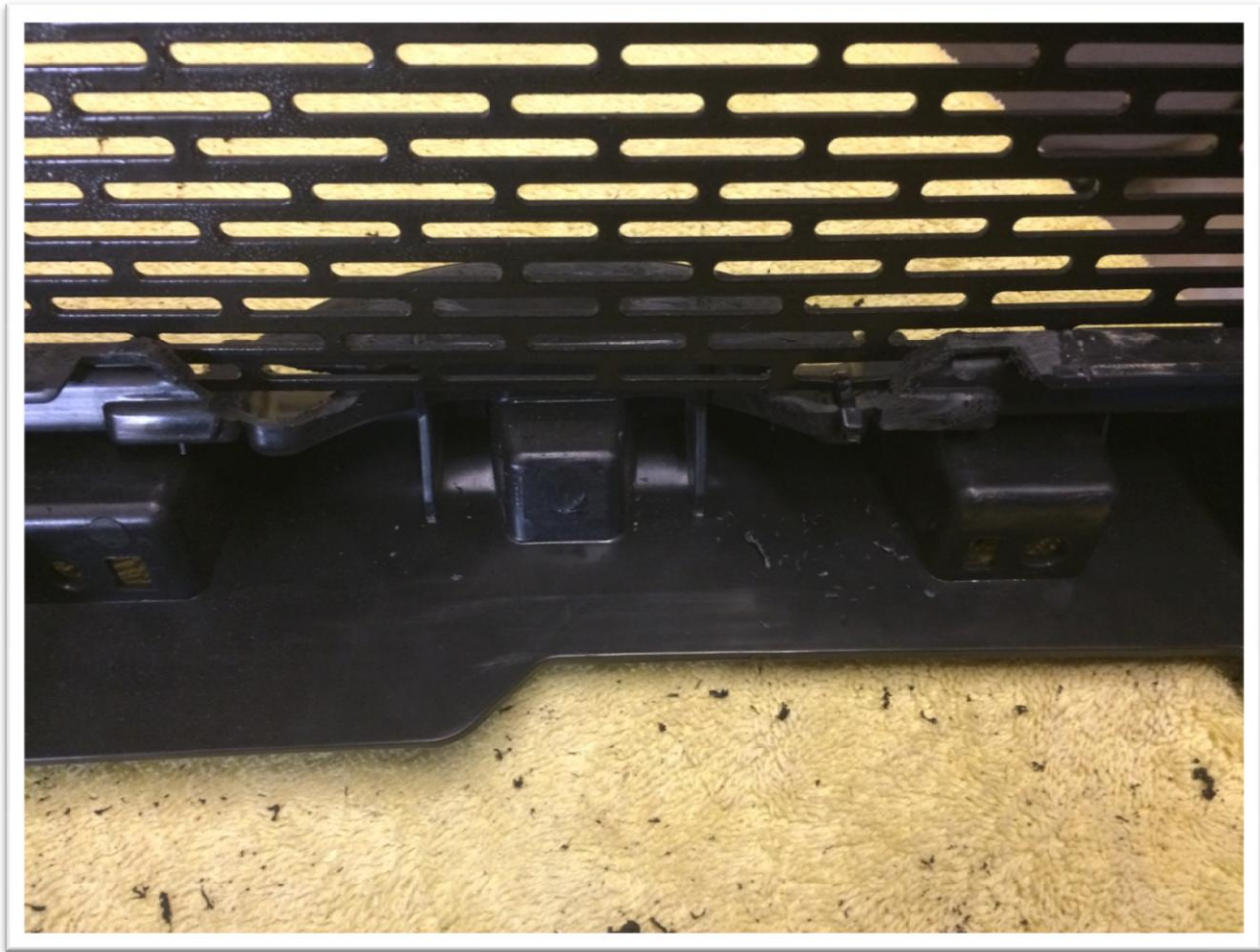
- Next cut out the remaining plastic and clean up the edges. Doesn't have to be perfect; it will be hidden by the mesh. You could add a piece of plastic to fill the gap but you don't have to, the mesh will hold it firmly in place.



- Line up the mesh so it is centered on the grill. Then drill a small pilot hole for the mounting screws. Two on each side will be fine.



6. After screwing in the mesh. I like to add a small zap strap to help hold the mesh in place, before attaching the outer shroud. Seen here on the bottom right, after drilling a small hole for it to go through.



7. The outer shroud has these small tabs that stick out. You will need to grind/Sand them flat.



8. Place the outer shroud onto the grill. Start at one side and work your way around the grill screwing it back together.



-The Grill is now complete.-



9. Now it's time for the bumper cap. This can be a bit scary. Start by sanding down the paint where the filler will be applied.



10. Line up where the bumper cap will be mounted and drill some pilot holes.



11. Add the spacers before screwing down the bumper cap.



12. Screw down the bumper cap. Make sure all points of the cap are lower than the bumper. You can fill the small gaps with JB weld before using body filler. Once dry, you can begin to add filler.



13. You can unclip the lower bumper mesh to protect it from the filler and later from paint.



14. Once you have leveled the filler and built up the factory lines you can now primer and paint.





15. Since we plasti-dipped the lower bumper, therefore we did the same to the upper portion here after priming. Enjoy your new grill from Bullet Proof Fabricating!



*Questions?*

*Email us!*

*[bpfabricating@gmail.com](mailto:bpfabricating@gmail.com)*