

BULLET PROOF FABRICATING

80 SERIES LAND CRUISER AND LX450 TAILGATE STORAGE Install Guide

Read entire installation instructions before installing.

Tools Required

- *Grinder or Jig Saw*
- *File*
- *Sand Paper*
- *Rust Prevention Paint*
- *13 mm Wrench*
- *5 mm Allen Key*
- *Ratcheting Wrench*
- *10 mm Socket*
- *Pry Tool or pliers*
- *Permanent Marker*
- *Tape Measure*
- *Philips Screw Driver*

1. Start by removing your carpet on your tail gate. Pull the edge up and work your way around. Remove any stuck clips with pliers or a pry tool.

2. Using a Philips Screw Driver or a 10mm Socket Wrench remove the smaller plates attached to the tail gate. Its also a good idea to unclip the license plate light wire from the tail gate. This will give you more room so that your less likely to cut it when cutting the tail gate.



3. You can now lay the new panel on to the tailgate. Put **all** button head bolts into their hole locations. This will align the panel so you can draw out where you will be cutting.



4. You want to leave a 1/4 inch of the original tailgate on the sides and the top portion (area closest to you when the tailgate is opened). On the hinge side you will be removing extra material to accommodate for the hinge bolts. This is what the new inside panel will be sitting on. It will be better for it to be on the bigger in size so don't go crazy cutting you can always trim more after.

Using a large Sharpie you can trace the inside of the panel and it will give you your 1/4 in gap. Or you can measure and draw a line.

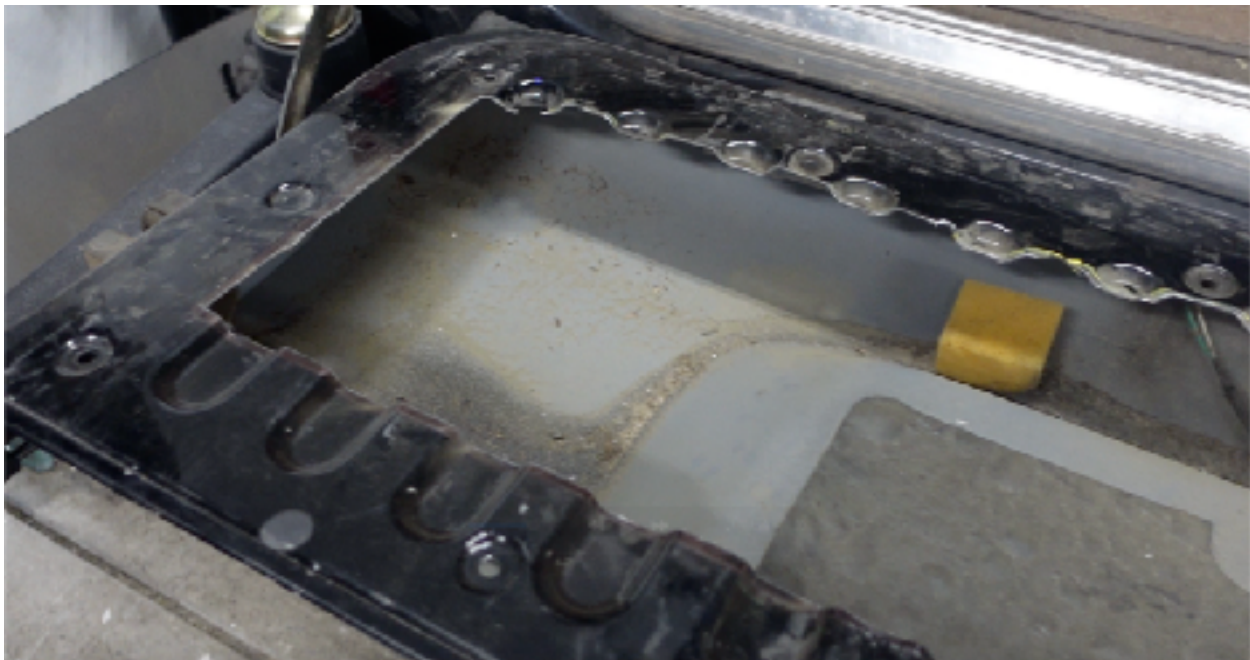
For the back of the panel you will need to remove about 1/2 behind the panel. So trace the line at the back of the panel as close as you can to hinge.





5. Once you have your line drawn you can remove the panel. Measure 1/2 inch back on the hinge line. You can remove the old line or just make sure you cut the right one. Now is a good time to double check your work. Put the panel back on and make sure everything is in the right place before you cut.

6. Now that you are confident everything is correct cut out the opening. Just make sure you're leaving that 1/4in gap on the sides and front. Put the tail gate back on see if its sitting flat. You may need to trim a bit more if the hinge bolts are touching the tail gate. You can just mark these and slightly slot them.



7. With the tailgate now sitting flat you can go ahead and clean up the cut edge. Use a file or some sand paper. Do this till the edge is safe to touch and you won't cut yourself on them.

8. Install the latches by placing the latch in its cut out and bolt the bracket to the centre of the latch.

Gently lower the panel and start using the adjustment bolt on the latch. You will see that it is making contact with the tailgate material. You will need to notch the 1/4 gap so that the bolt on the latch will clear. Do this to both sides. Be sure to clean up these edges again.



9. With the hardest parts completed, you can now remove the tailgate panel and vacuum out any of the dust and metal left behind. If you have it or want to install sound deadening material, now is a good time to install it.



10. Before installing the tailgate it is a good idea to paint the raw metal edges. With some masking tape and cardboard you can make quick work of this. We recommend using a rust preventing spray paint.

11. With the paint dry... you waited right!? Install the tailgate. Use the button head bolts (5mm) and lock nuts (13mm) provided. Install all of the bolts and nuts loosely before tightening down.

12. Adjust the latches if need be.

Installation is now complete! Way to go!

Got questions? Need help? E-mailing us at bpfabricating@gmail.com and we would be happy to help walk you through this process.