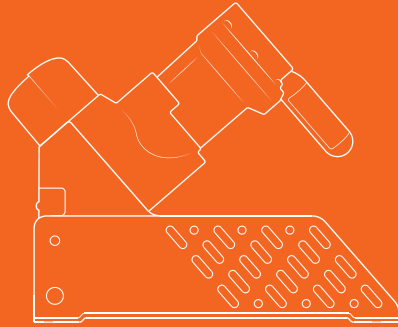


goodnature®

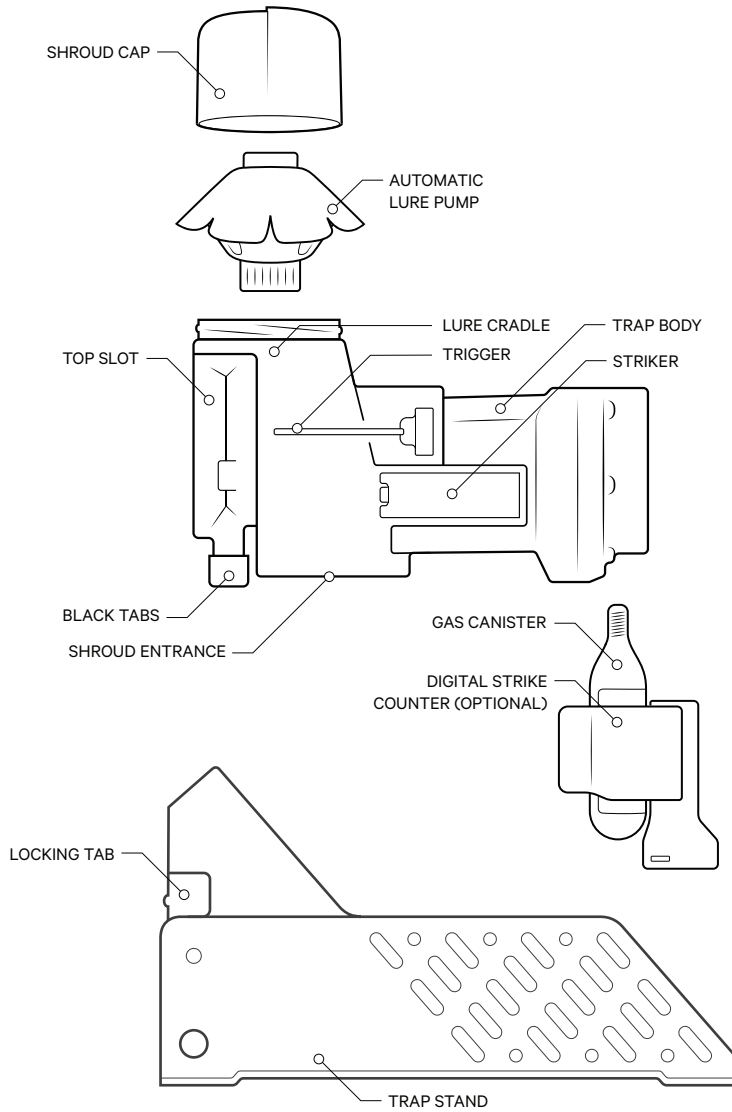


QUICK START GUIDE

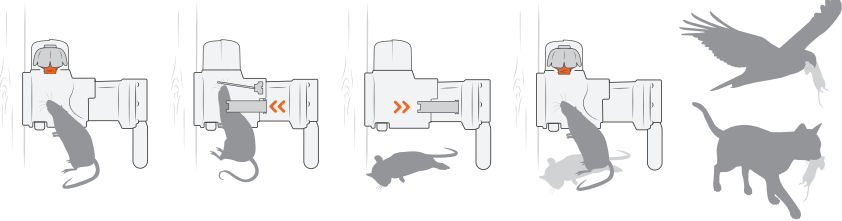
A24 rat & mouse trap

goodnature.co

YOUR TRAP - A24



HOW IT WORKS



SMIFF SNIFF

Targeted long life lure attracts rodents into the trap.

KAPOW!

Rodent moves the trigger to get to the lure, firing the trap.

AUTO-RESET

The trap clears and resets immediately after a humane kill.

SMIFF SNIFF...

The long life lure continues to attract rodents for constant control.

SCAVENGED

Different species scavenge the dead pests from below the trap.

DOING THINGS DIFFERENTLY IS IN OUR NATURE

We started Goodnature for good reason: to see endangered wildlife around the world flourish again. This means getting on top of a bunch of pests - rats and mice for starters. We also want to go about it kindly, without using nasty toxins.

That's why we develop humane traps that automatically reset and are easy and safe to use in living spaces through to wild places. Not only have we created a world-first, we started a revolution.

YOUR CONSTANT CONTROL SYSTEM

Congratulations! You're now the owner of the world's most advanced pest control technology. Goodnature's automatic resetting trapping system gives you constant control against pest reinvasion. Powered using compressed CO₂ gas, Goodnature technology combines design engineering principles and animal behavioural science with the highest manufacturing standards to deliver a trap that will kill 24 times per gas canister.

Our lures are developed to be long life to minimize maintenance effort and maximize freshness to remain highly attractive to pests. As our lures are toxin-free

there is no risk of secondary poisoning to wildlife, pets, livestock and working animals. Our unique Trigger and Strike mechanism gives the Goodnature A24 its certified A-Class humane status.

This Quick Start Guide has been developed to help you get the best results from your trap. Your success is everyone's success so if you have any questions or need any tips, get in touch!

WE'RE HERE TO HELP

Drop us an email or pick up the phone - we'd love to help you get rid of your rodents.

1-877-992-8868 / support@goodnature.co

TRAP SAFELY

We've designed our traps to target specific pests only. To avoid injuring or killing protected wildlife or any other animal that's good for nature, it's important you follow the installation instructions and our safety advice to set up your trap correctly. For trapping safety advice, tips to maximize success and support biodiversity in your own backyard visit [goodnature.co](https://www.goodnature.co)

Big thanks for joining us. Happy trapping!

HOW TO CATCH YOUR RODENTS

TO CATCH YOUR RODENTS FOLLOW THESE SIMPLE STEPS

Once you've assembled your trap...

1. PUT YOUR A24 TRAP & LURE TASTERS OUT

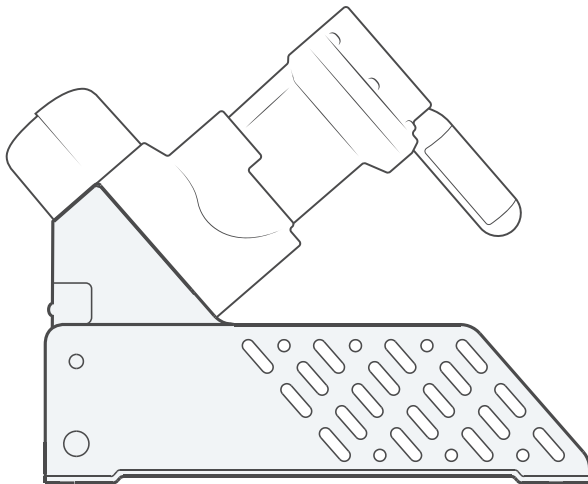
The Lure Tasters give your local rats and mice a taste of the lure in your trap. Rodents love our lure, so they'll go looking for more... and find it in your trap!

Place the trap where you've seen rodents, or evidence of them, at your place.

2. IF AT FIRST YOU DON'T SUCCEED... MOVE YOUR TRAP.

Moving your trap regularly helps catch all your rats and mice, as there's never just one. We recommend moving traps to a new spot weekly until you hit on a rodent hotspot.

If you've seen your Lure Tasters have been nibbled on, this is a great place to try your trap.



FIND THE BEST TRAP LOCATION

TIPS FOR WHERE TO PUT YOUR TRAP

The best place is where a rodent feels safe to eat - choose a spot where they're hidden from predators.

Good places to try your trap are in your roof, the corner of your garage or basement, in a kitchen cupboard - nice sheltered locations.

If you place your trap along a wall or fence line, make sure the trap stand is parallel to the wall.

Finding the most effective location to catch your rats and mice might take a few attempts. Be patient. Everyone's rodent hotspot is different!

MOVING YOUR TRAP HELPS CATCH 'EM ALL

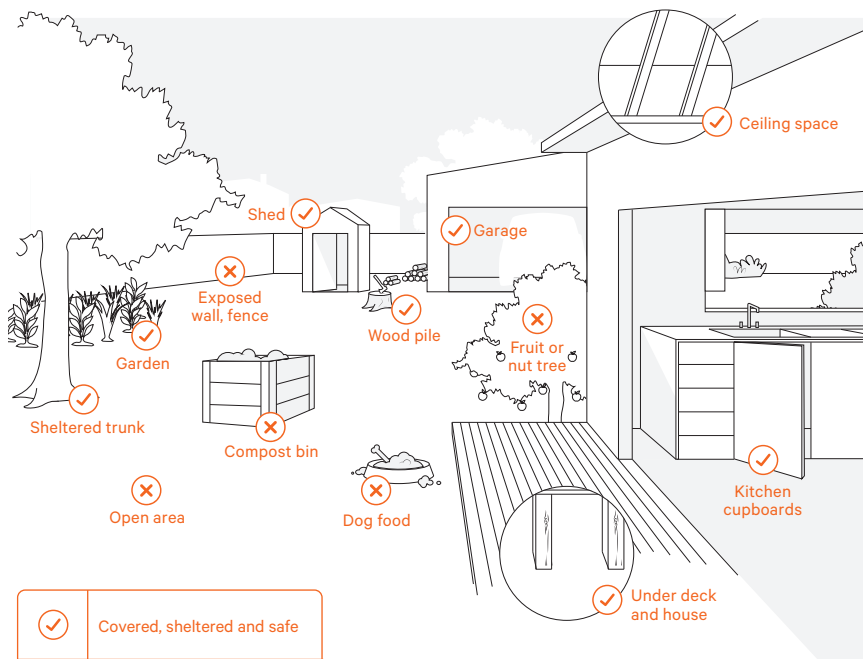
It can sometimes take a few attempts to find the best location for rodent trapping success.

If you don't catch anything in the first couple of days - simply move your trap to a new location.

Moving your trap regularly helps catch all your rats and mice, as there's never just one!

If you've seen your Lure Tasters have been nibbled on, this is a great place to try your trap.

We recommend moving traps to a new spot weekly until you find a rodent hotspot.



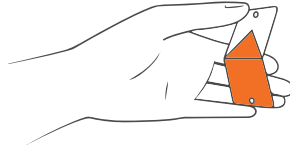
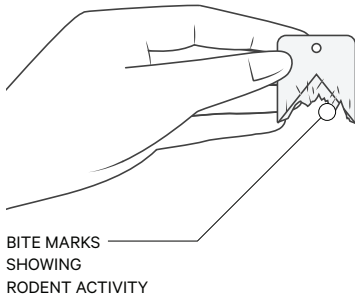
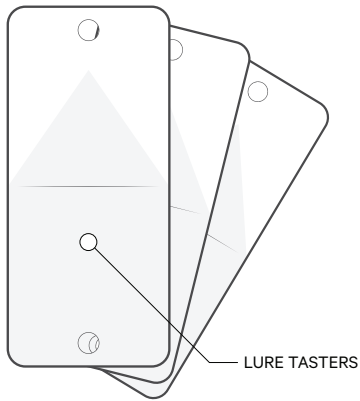
✓	Covered, sheltered and safe
✗	Open, exposed, unsafe or food competition

PUT OUT YOUR LURE TASTERS

USING THE LURE TASTERS IS EASY

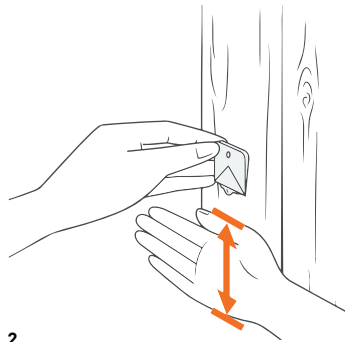
Choose a few locations around your property to install your lure tasters.

Choose spots near where you have your trap - up to about 20 ft / 10 m away works well.



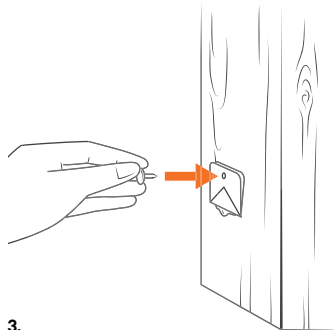
1.

Fold the Lure Taster in half with the orange triangular surface facing out. You should see the lure squeeze out along the fold. It's now ready to install.



2.

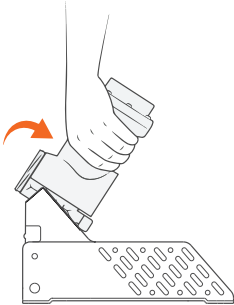
Position the Lure Taster so the bottom edge, with lure, is a hand width height (roughly 12 cm / 5 inches) off the ground. The orange side should be facing out.



3.

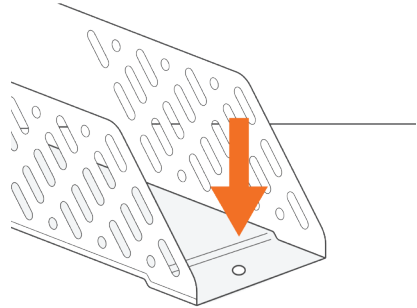
Use the pins to secure the card to a post, wall, fence in the areas you've chosen.

INSTALLING YOUR TRAP



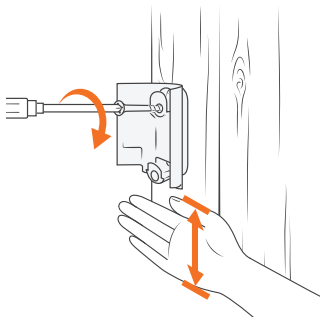
1. ATTACH TRAP TO THE STAND

Guide the top slot at the rear of the A24Trap onto the black locking tab of the stand. Once these are coupled, gently ease the trap into the stand by pressing down on the Trap Body. It will click into place. It is easiest done when you don't force it.



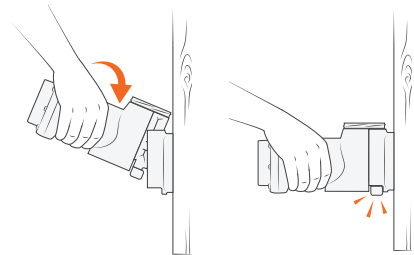
2. SECURING THE STAND

There are two peg holes at either end of the stand that you can use to keep the trap upright if placing it on an uneven surface.



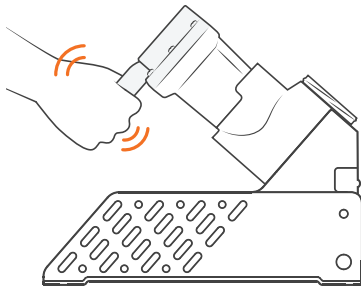
3. IF USING A TRAP MOUNT

Using a screwdriver, screw in the orange Trap Mount 12cm / 5 inches (about a hand width) above the ground onto a straight tree or post. **Do not overtighten the screws.**



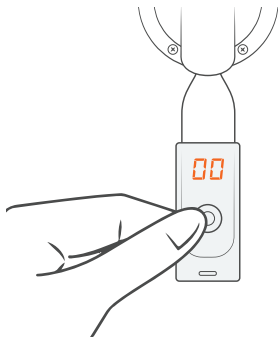
4. CLICK THE TRAP BODY INTO THE TRAP MOUNT

Tilt the Trap Body backwards slightly and lower it onto the top locking tab of the Trap Mount. As you press downwards the Trap Body will be guided in toward the Trap Mount and lock in with a click.



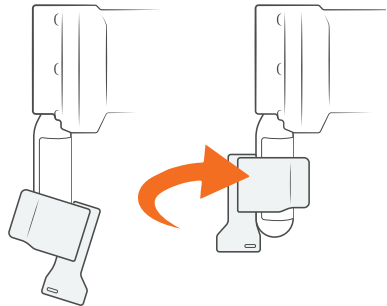
**5.
POWER UP YOUR TRAP**

Remove the black cap from the gas canister. Be careful to keep the screw thread clean and free of debris. Screw the canister firmly into the trap. **Hand tighten only.**



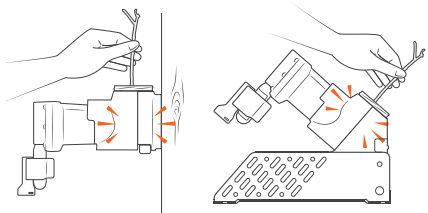
**7.
ZEROING & CHECKING THE COUNTER**

Zero the Counter by pressing the button and holding it down until the display shows '00'. The Counter goes to sleep a few seconds after the button is released. To check the tally on the Counter, quickly press and release the button. The display will show the number killed.



**6.
ATTACH THE DIGITAL STRIKE COUNTER
(OPTIONAL)**

If you purchased a Counter with your A24, slightly wet the inside of the rubber strap for lubrication and rotate the Counter counter-clockwise as you ease it up the canister. **The Counter display must face directly away from the trap.**



**8.
TEST-FIRE YOUR TRAP**

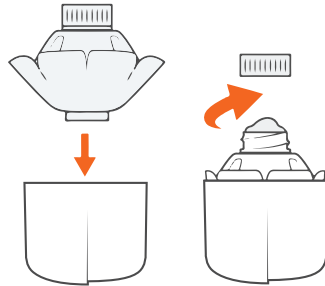
To test fire the trap, reach a pen or twig down through the top of the trap and push the Trigger gently to the side. The Striker will fire with a bang and then retract. **Always keep your hands clear of trap entrances and always treat the trap as live.**



9. ACTIVATE THE AUTOMATIC LURE PUMP

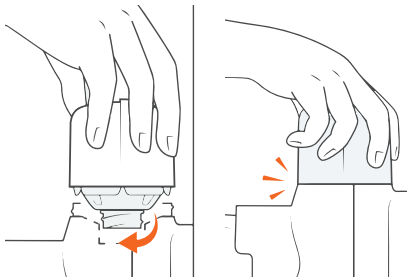
Remove the 10c coin from the top of the Automatic Lure Pump (ALP) just before you put it into the Shroud Cap. This activates the technology which will dispense lure for up to 6 months.

If you prefer to check your trap regularly, you can leave the coin in place and instead give the ALP a gentle squeeze every few days to dispense fresh lure.



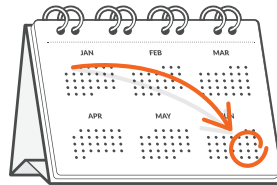
10. NEST AUTOMATIC LURE PUMP INTO SHROUD CAP

With the ALP activated, gently squeeze and shape the ALP into the Shroud Cap. It will be a tight fit. Push the ALP into the Shroud Cap until its skirted edge sits aligned with the edge of the Shroud Cap rim. It will then easily screw into the Lure Cradle. Now remove the ALP Screw Cap. A small amount of lure may be forced out, that's fine – there's still enough lure for 6 months. Wipe this excess lure below the entrance to your trap to start attracting pests.



11. SCREW & SECURE THE SHROUD CAP & ALP

Place the Shroud Cap with the ALP into the Lure Cradle and screw into the internal thread with a few turns. Once the ALP is screwed into the Lure Cradle, secure the Shroud Cap onto the trap by pushing down and clicking into place with another turn. The ALP is now set and active!



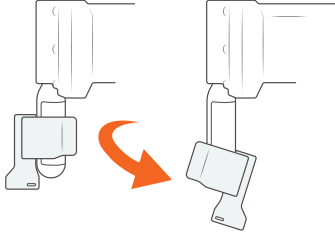
12. REPLACE THE GAS & LURE EVERY 6 MONTHS

Your ALP will last for up to 6 months. Make a note of when you'll need to replace your lure. This keeps your lure fresh and attractive to pests. It's a good idea to replace your gas canister at the same time, so your trap is always powered and ready to strike.

MOVING YOUR TRAP SAFELY

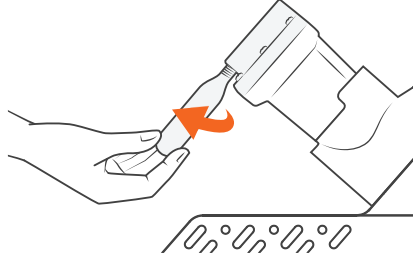
1.

REMOVE COUNTER



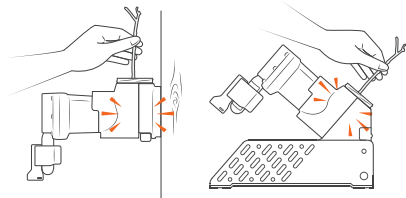
2.

UNSCREW GAS



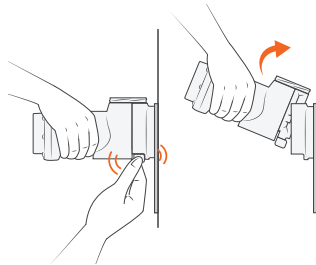
3.

TEST FIRE



4.

DETACH TRAP FROM MOUNT



HOW TO MOVE TRAPS SAFELY

If your trap is in a trap stand, you can move your trap safely at any time.

If you have your trap installed on a Trap Mount, follow these steps to de-gas the trap and move it safely.

- First remove the Counter.
- Holding the gas canister with a cloth to protect your hands, unscrew the gas canister. You may hear any remaining gas in the canister escaping. This may cause the canister to freeze rapidly.

WARNING: gas canisters can freeze quickly! Always have fabric between your hand and the gas canister when unscrewing them.

WARNING - REMOVE FINAL CHARGE FROM THE TRAP

Although the gas canister has been removed, the trap may still be live with one charge remaining in its chamber. Safely test fire your trap by removing the Shroud Cap and the ALP, and using a pen/twig reach down through the top of the trap and push the Trigger to one side. If there is still gas in the trap, the orange Striker will be triggered, if nothing happens, all gas has been flushed out and the trap is safe to move.

Always treat the trap as live until you have de-gassed and test fired it. If the trap doesn't fire when triggered, the trap has successfully been de-gassed.

With the trap de-gassed, your trap is now safe to detach from the Trap Mount. Using your thumb and forefinger, squeeze the Black Tabs and with upward pressure pull the trap up and off the Trap Mount.

Always keep fingers clear of trap entrances.

WARNINGS & DECLARATIONS

EC DECLARATION OF CONFORMITY OF MACHINERY (ORIGINAL)

This declaration relates exclusively to the machinery in the state in which it was placed on the market, and excludes components which are added and/or operations carried out subsequently by the final user.

Product: Rat and Stoat Trap / Rat and Mouse Trap, A24; including trap mount kit and blocker accessories.

Manufacturer: Goodnature Limited, 8 Horner Street, Newtown, Wellington 6021, NEW ZEALAND

Technical File Authorised owner: Craig Bond, 8 Horner Street, Newtown, Wellington 6021, NEW ZEALAND

This product fulfils all relevant provisions of the Machinery Directive. Signed for an on behalf of: Goodnature Limited, Wellington

Place and date of Issue:
Goodnature Limited, 8 Horner Street, Newtown,
Wellington 6021, NEW ZEALAND, 10th January - 2020

Craig R. Bond, Director



WARNINGS

- USE ONLY Goodnature CO₂ Canisters. Use of other canisters will void warranty
- NEVER use a petroleum-based lubricant in your trap
- ALWAYS store CO₂ Canisters below 49°C
- NEVER leave CO₂ Canisters in a vehicle on a hot day
- ALWAYS dispose of used CO₂ Canisters responsibly
- NEVER crush CO₂ Canisters or put in a fire
- NEVER allow children to play with or around traps
- NEVER submerge your trap
- NEVER use a damaged trap
- NEVER modify your trap
- ALWAYS act responsibly
- USE ONLY as recommended in this quick start guide
- ALWAYS wear appropriate safety gear when setting and firing a trap
- DO NOT install the CO₂ Canister until the trap is correctly mounted
- ONLY test fire your trap as directed: see section: Moving Your Trap
- ALWAYS treat your trap as LIVE
- ALWAYS remove the CO₂ Canister and test-fire to remove final charge before removing the trap from its mounted position
- ALWAYS remove the CO₂ Canister and test-fire to remove final charge before moving the trap
- ALWAYS test-fire to remove final charge from the trap after removing the CO₂ Canister and before removing it from the trap mount: see section: Moving Your Trap
- ONLY set traps at the height recommended in this guide and be considerate of others when choosing the traps location
- NEVER put hands or objects in the entrance of the trap
- NEVER fire and re-fire the trap in quick succession
- Contains gas under pressure; may explode if heated
- Protect from sunlight. Store in a well-ventilated place
- UN2037 / EN16509
- Carbon Dioxide CO₂, CAS: 124-38-9, 16g



goodnature.co



Please recycle after use. This material has been printed using vegetable oil-based/mineral oil-free inks. Printed on recycled paper and sourced from sustainable forests.

US_Quick-Start-Guide_REV-01