

## VANGUARD II Series

Multi Functional double conversion LCD On-Line UPS

Powercom is proud to present the true online topology uninterruptable power supply, the Vanguard II series. Designed in both tower form (models named as "VGS") and rack mount-tower form (models named as "VRT"), the Vanguard II series provides continuous sine-wave power with its peak power factor of 0.9, double conversion technology, and high frequency design. With its market leading performance, the Vanguard II series is the ideal power solution for network server rooms, cloud execution and storage systems, telecommunication centers, sensitive and critical electronic systems, or any system requiring high capacity and stable power supply.

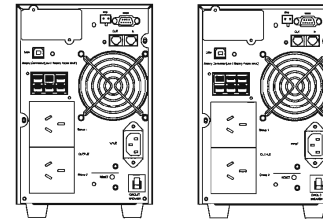
- Double conversion online topology with 0.9 power factor.
- Pure sine-wave output with less than 3% of THD.
- Energy-saving functions with high-efficiency mode, free-run mode, etc.
- Complete protections on short circuit, overload, surge and telecom ports, etc.
- Reliable design with Advanced Battery Management and Adjustable Cooling System.
- Multiple communication and remote monitoring via RS-232, USB, SNMP, etc.

### Tower model - VGS

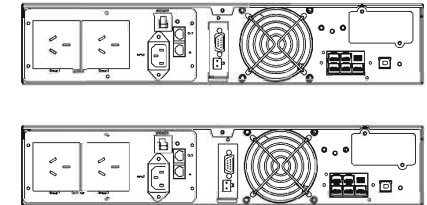
### Rack&Tower model-VRT



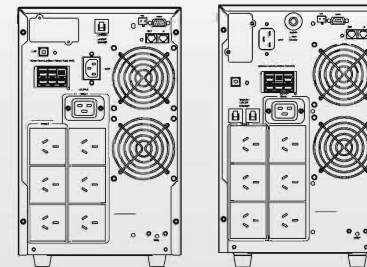
### VGS-1000&1500



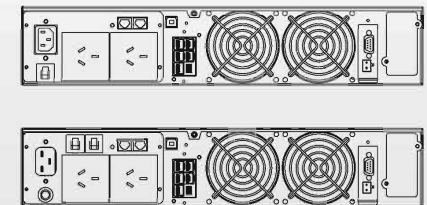
### VRT-1000&1500



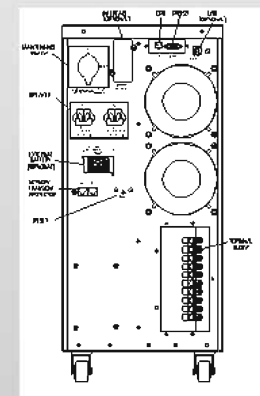
### VGS-2000&3000



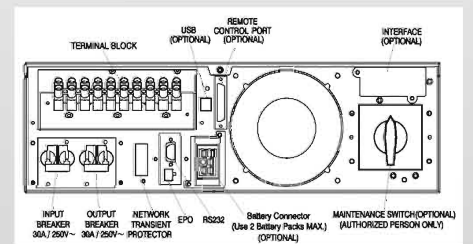
### VRT-2000&3000



### VGS-6000



### VRT-6000



Specification

MODEL		VGS-1000	VGS-1500	VGS-2000	VGS-3000	VGS-6000	VGS-10K
CAPACITY		1000VA	1500VA	2000VA	3000VA	6000VA	10000VA
		900W	1350W	1800W	2700W	5400W	9000W
INPUT	Voltage	208V / 220V / 230V / 240V 120V to 139V under 25% load, 140V to 159V under 50% load, 160V to 179V under 75% load, 180V to 276V with 100% load					
	Frequency	50Hz / 60Hz ±2.5Hz auto sensing (45Hz to 65Hz user selectable)					
	Phase	Single phase					
	Power factor	> 0.97					
OUTPUT	Voltage	208V / 220V / 230V / 240V (±2% on battery)					
	Frequency	50Hz / 60Hz ±0.25Hz					
	Waveform	Pure sine wave					
	Phase	Single phase					
	Harmonic distortion	< 5% of T.H.D. at non-linear load			< 3% of T.H.D. at linear load		
		< 2.5% of T.H.D. at linear load					
	Efficiency	Approximately 89%					
Connections	*Please refer below "Receptacle Options". Customized receptacle can be discussed.						
PROTECTION	Overload protection	UPS automatic power off if overload exceeds 106% to 120% of nominal at 30 seconds; 121% to 150% for 10 seconds					
	Short circuit protection	UPS output cut off immediately or protected by input fuse or circuit breaker					
	Tele-communication	RJ45 x 2					
	Alarm	Buzzer beeps under backup mode, battery low, battery charging fault, and overload					
BATTERY	Type	Sealed, maintenance-free lead acid battery					
	Typical recharge time	4 hours to 90%					
	Battery quantity	12V 7Ah x 3	12V 7Ah x 4	12V 7Ah x 6	12V 7Ah x 8	12V 7Ah x 20	12V 9Ah x 20
	Backup time (100% load)	3 to 5 minutes	3 to 5 minutes	3 to 5 minutes	3 to 4 minutes	4 to 5 minutes	3 to 4 minutes
	Protection	Battery low cut-off without draining any current					
GENERAL	Dimension (W x D x H)	152mm x 420mm x	152mm x 500mm x	225mm x 420mm x 358mm		257mm x 590mm x	257.4 mm x 642.4mm
		238mm	238mm			570mm	x 585.2mm
	Product weight	16.2kg	18.3 kg	26.5 kg	31.5 kg	86.0kg	95.5kg
	Display (LED/LCD)	LED - line mode (green), bypass / battery mode (yellow), fault (red) LCD - input / output voltage and frequency, on-line mode, backup mode, battery capacity, load level					
	Communication interface	Standard - RS-232; *Optional - USB B-type and/or SNMP					
	Audible noise	< 45dBA (1m from surface)		< 50dBA (1m from surface)		< 60dBA (1m from surface)	
	Ambient temperature	+0°C to +40°C				+0°C to +40°C	
	Storage temperature	-15°C to +50°C				-20°C to +50°C	
	Humidity	0-95%, non-condensing					

Specification

MODEL		VRT-1000	VRT-1500	VRT-2000	VRT-3000	VRT-6000	VRT-10K
CAPACITY		1000VA	1500VA	2000VA	3000VA	6000VA	10000VA
		900W	1350W	1800W	2700W	5400W	9000W
INPUT	Voltage	208V / 220V / 230V / 240V 120V to 139V under 25% load, 140V to 159V under 50% load, 160V to 179V under 75% load, 180V to 276V with 100% load					
	Frequency	50Hz / 60Hz ±2.5Hz auto sensing (45Hz to 65Hz user selectable)					
	Phase	Single phase					
	Power factor	> 0.97					
OUTPUT	Voltage	208V / 220V / 230V / 240V (±2% on battery)					
	Frequency	50Hz / 60Hz ±0.25Hz					
	Waveform	Pure sine wave					
	Phase	Single phase					
	Harmonic distortion	< 5% of T.H.D. at non-linear load			< 3% of T.H.D. at linear load		
		< 2.5% of T.H.D. at linear load					
	Efficiency	Approximately 89%					
Connections	*Please refer below "Receptacle Options". Customized receptacle can be discussed.						
PROTECTION	Overload protection	UPS automatic power off if overload exceeds 106% to 120% of nominal at 30 seconds; 121% to 150% for 10 seconds					
	Short circuit protection	UPS output cut off immediately or protected by input fuse or circuit breaker					
	Tele-communication	RJ45 x 2					
	Alarm	Buzzer beeps under backup mode, battery low, battery charging fault, and overload					
BATTERY	Type	Sealed, maintenance-free lead acid battery					
	Typical recharge time	4 hours to 90%					
	Battery quantity	12V 7Ah x 3	12V 7Ah x 4	12V 7Ah x 6	12V 9Ah x 6	12V 7Ah x 20	12V 9Ah x 20
	Backup time (100% load)	3 to 5 minutes	3 to 5 minutes	3 to 5 minutes	3 to 4 minutes	4 to 5 minutes	3 to 4 minutes
	Protection	Battery low cut-off without draining any current					
GENERAL	Dimension (W x D x H)	428mm x 425mm x	428mm x 500mm x	428mm x 645mm x 84mm		428mm x 597mm x	428mm x 658mm x
		84mm	84mm			130mm	130mm
	Product weight	15.2 kg	20.8 kg	29 kg	30 kg	86.0kg	95.5kg
	Display (LED/LCD)	LED - line mode (green), bypass / battery mode (yellow), fault (red) LCD - input / output voltage and frequency, on-line mode, backup mode, battery capacity, load level					
	Communication interface	Standard - RS-232; *Optional - USB B-type and/or SNMP					
	Audible noise	< 45dBA (1m from surface)		< 50dBA (1m from surface)		< 65dBA (1m from surface)	
	Ambient temperature	+0°C to +40°C				+0 °C to +40°C	
	Storage temperature	-15°C to +50°C				-20 °C to +50°C	
	Humidity	0-95%, non-condensing					