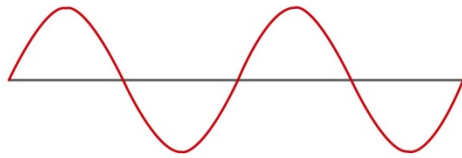


# MACAN Comfort



PURE Sinwave Output



MAC-1000VA / 2000VA / 3000VA

## Main Feature

- **Output Power Factor 1**

MAC series is a new generation UPS combine with advanced technology and **Power Factor 1.0** output, which perfectly protect your system, and ensure the best output performance.

- **Pure Sine Wave output less than 2.5% THD**

With the latest POWERCOM technology, MAC is able to provide Pure Sine Wave output with less than 2.5% THD for better user experience.

- **Brand new diagram LCD Display**

MAC series equipped with industry-leading LCD display. Users acquire UPS information instantly from the big size and clear display.

- **Six section Fan Regulation**

With six fan speed segment for different loading, MAC remains the best temperature for its high efficiency and reduces the operating noise.

- **True Double Conversion**

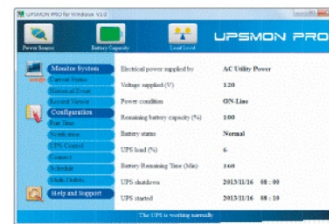
True double conversion UPS provides clean, high quality and stable power to fully protect your important devices.

- **50 / 60 Hz Frequency Converter Mode**

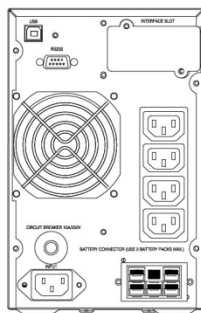
No matter how low/high the input voltage is, lock output frequency at 50 Hz or 60 Hz.

- **UPSMON Pro and APP support**

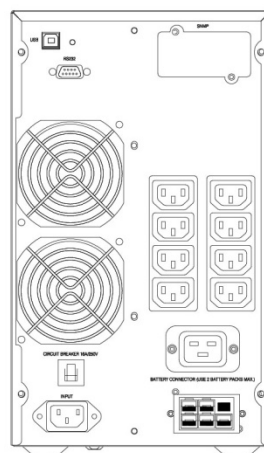
UPSMON and UPSMON APP control UPS and provide UPS status instantly.



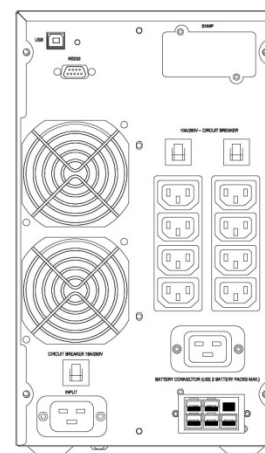
## IEC Standard Outlet



MAC-1000



MAC-2000



MAC-3000

## Specification

Model	MAC-1000	MAC-2000	MAC-3000
<b>Configuration</b>			
Capacity (VA)	1000 VA	2000 VA	3000 VA
Capacity (Watts)	1000 W	2000 W	3000 W
Form	Tower Type		
Energy Saving	Yes - ECO Mode Efficiency >94%		
<b>Input</b>			
Voltage	208 / 220 / 230 / 240 Vac		
Input Voltage Range	120 - 276 VAC, < 25% Load		
	140 - 276 VAC, < 50% Load		
	160 - 276 VAC, < 75% Load		
	180 - 276 VAC, < 100% Load		
Input Frequency Range	50 / 60 Hz (Auto Sensing)		
Input Power Factor	>0.97		
Cold Start	Yes		
<b>Output</b>			
Rated Power Factor	1.0		
Waveform	Pure Sine Wave		
Voltage	208* / 220 / 230 / 240 Vac ± 2%		
Frequency	50 / 60 Hz ±0.25 Hz		
Transfer Time	0 ms		
Harmonic Distortion	≤ 2.5% THD at Linear Load		
Crest Factor	3 : 1		
EPO Function	Option		
<b>Protection</b>			
Overload	Line Mode	105% - 120% for 30 seconds 121% - 150% for 10 seconds	
	Battery Mode	101% - 109% for 10 seconds 110% - 120% for 3 seconds	
Surge Protection	IEC 61000-4-5 Level 3		
Bypass	Internal Bypass (Automatic and Manual)		
Short Circuit Protection	UPS Output Cut Off Immediately		
<b>Battery</b>			
Type	12V 9Ah	12V 7Ah	12V 9Ah
Quantity	2	6	6
Sealed, Maintenance Free	Yes		
Typical Recharge Time	4 hr to 90%		
External Battery Module	Option		
External Battery Connector	Option		
<b>Management &amp; Communication</b>			
LCD Control Panel	Yes		
Communication Port	RS 232, USB B type		
SNMP Slot	Option		
Audible Alarms	Yes		
<b>Physical</b>			
Dimensions (WxDxH) (mm)	144 x 357 x 228	191 x 406 x 327	191 x 406 x 327
Weight (kgs)	10.4	20.3	22.9
Shipping Dimensions (mm)	249 x 448 x 359	292 x 500 x 455	292 x 500 x 455
Shipping Weight (kgs)	11.5	22.3	24.9

\* While 208V output, capacity will be derated to 90%.

\*\* Specifications are subject to change without further notice.

\*\* Specifications are for reference, actual information should be based on real product.