

HDMI 1.4 / 2.0 HIGH SPEED WITH ETHERNET CABLES

Data Sheet including Construction, Design and Specification Drawing

Dueltek Part Number	Product Description
HD4-0.5	50cm HDMI High Speed with Ethernet Cable Version 1.4 / 2.0 @ 30Hz 4:4:0
HD4-01	1M HDMI High Speed with Ethernet Cable Version 1.4 / 2.0 @ 30Hz 4:4:0
HD4-02	2M HDMI High Speed with Ethernet Cable Version 1.4 / 2.0 @ 30Hz 4:4:0
HD4-03	3M HDMI High Speed with Ethernet Cable Version 1.4 / 2.0 @ 30Hz 4:4:0
HD4-05	5M HDMI High Speed with Ethernet Cable Version 1.4 / 2.0 @ 30Hz 4:4:0



The Dueltek HDMI High Speed with Ethernet cable is designed and tested to handle video resolutions of 4K and beyond, including advanced display technologies such as 4K, 3D, and Deep Colour. Specified to HDMI Version Standard 2.0 @ 30Hz, it is fully backwards compatible with previous HDMI versions such as 1.3a, 1.3b, 1.3c and 1.4.

If you are using any of these technologies, or if you are connecting your High Definition display to a HDMI content source, such as a media player, X-Box, PlayStation or Blu-ray Disc player, this is the recommended cable.

Featuring an additional dedicated data channel, known as the HDMI Ethernet Channel, for device networking. HDMI Ethernet Channel functionality is only available if both linked devices are HDMI Ethernet Channel-enabled.

HDMI 1.4 / 2.0 HIGH SPEED WITH ETHERNET CABLES

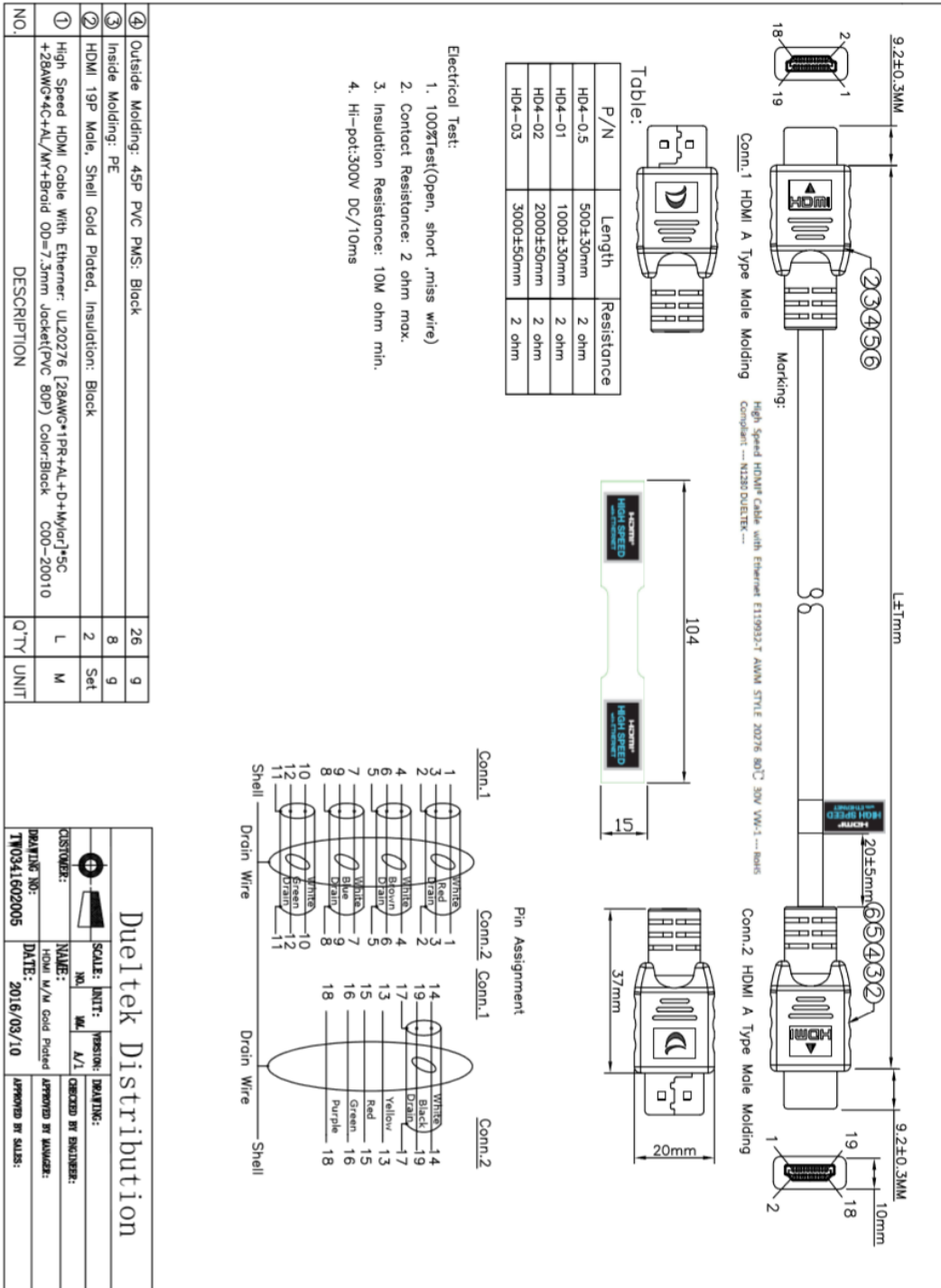
Data Sheet including Construction, Design and Specification Drawing

Specifications:

- HDMI Version: 1.4 / 2.0 @ 30Hz
- 4:4:0 Chroma
- Connectors: HDMI 19 pin Type-A Male to Male
- Shielded for high protection against RFI and EMI interference.
- RoHS Compliant..
- Bandwidth is 340 MHz (10.2 Gigabits per second).
- Precise 100-ohm impedance.
- 24K Gold-plated corrosion-resistant certified connectors.
- Gas-injected dielectric insulation.
- Fully supports CEC and HDCP control connections.
- 3D Capable
- Ethernet network SA-CD, DVD-Audio, DTS-HD Master Audio, Dolby TrueHD, Dolby ATMOS and other high-definition audio standards Deep colour, up to 16-bits per channel, including Sony's x.vColor standard
- Extended CEC (Consumer Electronics Control) commands and functions, HEC (HDMI Ethernet Channel) and ARC (Audio Return Channel) standards

HDMI 1.4 / 2.0 HIGH SPEED WITH ETHERNET CABLES

Data Sheet including Construction, Design and Specification Drawing



NO.	DESCRIPTION	Q'TY	UNIT
④	Outside Molding: 45P PVC PMS: Black	26	9
③	Inside Molding: PE	8	9
②	HDMI 19P Male, Shell Gold Plated, Insulation: Black	2	Set
①	High Speed HDMI Cable With Ethernet: UL20276 [28AWG+19R4AL+D+MYlor1+SC+28AWG+4C+AL/MY+Braid OD=7.3mm Jacket(PVC 80P) Color:Black C00-20010	L	M

Dueltek Distribution

CUSTOMER:	SCALE:	INTI:	VERSION:	DATELINE:
NAME:	NO.	MM.	A/I	CHECKED BY ENGINEER:
DATE:	2016/03/10	APPROVED BY MANAGER:	APPROVED BY SALES:	