

# AGUA

PERFORMANCE UPHOLSTERY FABRICS

## Lunar Collection

Faux leather for indoor upholstery

## Lunar

### A faux leather upholstery fabric for indoor seating

Perfect for:

Commercial, cruise, healthcare, hospitality and leisure.

#### Fabric Specifications

<b>Flame retardant</b>	BS7176 Crib 5, BS EN 1021-1:2006 1&2, BS5852 Crib 5, IMO Annex 1 Part 8.
<b>Anti-bacterial/Anti-fungal</b>	Resistant to microbial or fungal growth including Salmonella, E Coli and MRSA.
<b>Waterproof</b>	Hydrostatic Head BS3424 > 1 metre.
<b>Martindale</b>	Severe Contract > 400,000.
<b>Stain resistant</b>	Excellent stain removal has been observed for grease, ink, blood, urine, coffee, iodine, betadine, ketchup, chewing gum, chocolate, grape juice.
<b>Composition</b>	2% Vinyl Acrylic, 74% PVC, 16% Polyester, 8% Cotton.
<b>Width</b>	140cm (55") wide.
<b>Weight</b>	750 gsm (±37).

#### Technical Information

- We recommend a minimum of 32 stitches per 10 cm (8 stitches per inch) and seams must have a minimum 12mm (0.5") bite on the fabric.
- Can be stitched, tacked and glued. Cannot be heat welded.
- Please note that all fabric offered is subject to minor tolerance in respect of shade and other slight variations.
- Lunar can be colour co-ordinated with other Agua collections to produce stunning dual textured finishes.
- Bespoke colours can be produced subject to minimum quantity orders.
- Technical specifications may be amended, please check for the latest information.
- Please ask if you require a sample of the current batch available but be aware that stock can move quickly.

#### Fabric Care

- Poorly fixed clothing dyes, e.g. denim, will cause permanent staining. Most stains can be removed using cold/warm water and a clean microfibre cloth.
- Use a vacuum cleaner or soft brush to remove dust and solid particles.
- Wipe frequently with a damp cloth to maintain the appearance of the fabric.
- Remove all stains immediately before they set. All spillages should be removed immediately with a clean absorbent cloth.
- If soap based cleaners are used, all soap residues must be rinsed from the fabric.
- Can be steam cleaned in situ.
- Do not machine wash or dry clean.
- Can be cleaned with mild Hypochlorite solutions (10,000 ppm of available chlorine) e.g.: Haz Tabs, Chlor-Clean. Continued use may cause discolouration and surface damage.
- Always try cleaning products on a hidden piece of fabric to test suitability.
- Do not use: solvents, abrasives, chemical agents, waxes or polishes as this will damage the surface of the fabric.
- Do not use marker pens on the back of the fabric.
- Please refer to the Lunar Fabric Technical Specifications PDF download on the Agua website for further details.

#### Our Environmental Policy

Our products have always been phthalate free and Reach\* compliant. Our processes are non-toxic and the methods used during manufacture and finishing ensure that potentially hazardous accidental cross contamination is minimised to the greatest degree possible. All our fabrics meet the stringent Oeko-Tex\*\*

standards, regardless of origin, so are free from harmful chemicals and safe for human use.

\* Registration, Evaluation, Authorisation and Restriction of Chemicals (EU regulation: 18th December 2006)

\*\* See more: [www.oeko-tex.com](http://www.oeko-tex.com)



#### Samples and Enquires

You can contact us for samples, order enquiries or information about any of our fabric ranges here:

Agua Fabrics Ltd,  
Hyde House,  
The Hyde, London NW9 6LH  
T +44 (0)20 8205 0050  
E [info@aguafabrics.com](mailto:info@aguafabrics.com)  
[www.aguafabrics.com](http://www.aguafabrics.com)

# AGUA

PERFORMANCE UPHOLSTERY FABRICS



Certificate No. FS 531220



PlanetMark Certified Business



PlanetMark  
Certified  
Business



Anti-Microbial



Bleach  
Cleanable



Fire Retardant  
Crib 5/IMO



Stain  
Resistant



Waterproof



> 400k  
Martindale  
Abrasion  
Severe  
Contract



Phthalate  
Free



REACH  
Compliant

Lunar Collection / v.8.9



Lunar Scorpio  
Plum



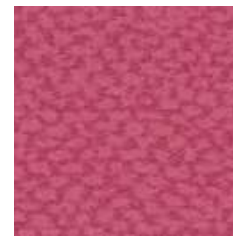
Lunar Scorpio  
Red



Lunar Scorpio  
Crimson



Lunar Scorpio  
Rose



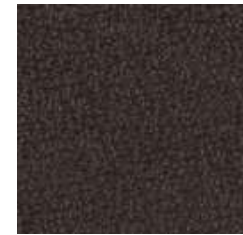
Lunar Aquarius  
Rose



Lunar Aquarius  
Red



Lunar Aquarius  
Plum



Lunar Scorpio  
Dark Brown



Lunar Scorpio  
Chestnut



Lunar Scorpio  
Terracotta



Lunar Scorpio  
Cream



Lunar Aquarius  
Cream



Lunar Aquarius  
Terracotta



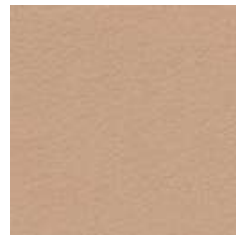
Lunar Aquarius  
Chestnut



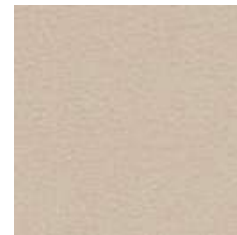
Lunar Aquarius  
Dark Brown



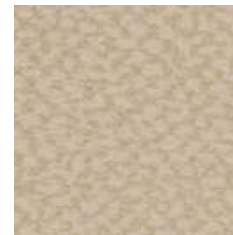
Lunar Scorpio  
Mink



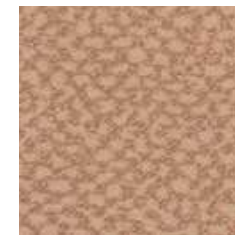
Lunar Scorpio  
Oyster



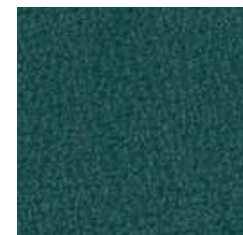
Lunar Scorpio  
Cream



Lunar Aquarius  
Cream



Lunar Aquarius  
Oyster



Lunar Scorpio  
Emerald



Lunar Scorpio  
Teal



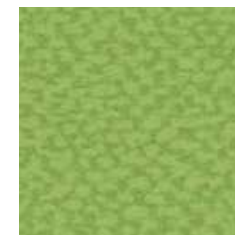
Lunar Scorpio  
Green



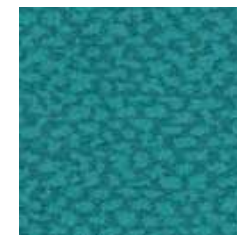
Lunar Scorpio  
Apple



Lunar Aquarius  
Apple



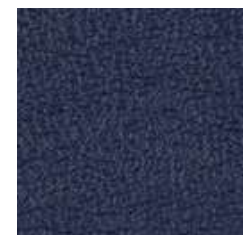
Lunar Aquarius  
Green



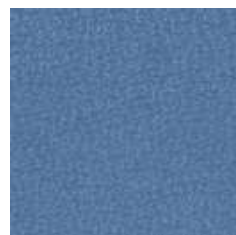
Lunar Aquarius  
Teal



Lunar Aquarius  
Emerald



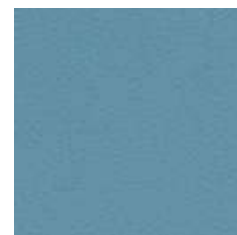
Lunar Scorpio  
Navy



Lunar Scorpio  
Cornflower



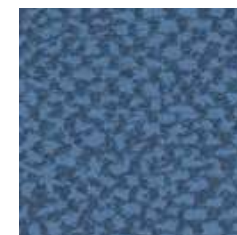
Lunar Scorpio  
Ink



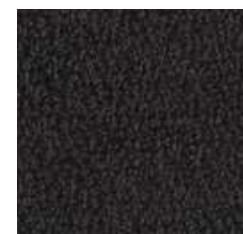
Lunar Scorpio  
Sky



Lunar Aquarius  
Sky



Lunar Aquarius  
Cornflower



Lunar Scorpio  
Black



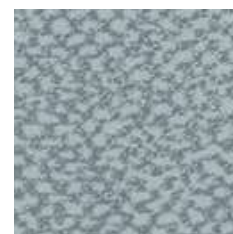
Lunar Scorpio  
Dark Grey



Lunar Scorpio  
Grey



Lunar Scorpio  
Pebble



Lunar Aquarius  
Pebble



Lunar Aquarius  
Grey



# AGUA

PERFORMANCE UPHOLSTERY FABRICS

## Paint Pot Collection

A striking faux leather for indoor upholstery

## Paint Pot

Natural looking faux leather in modern, refreshing colours

Perfect for:

Commercial, cruise, healthcare, hospitality and leisure.

Fabric Specifications

<b>Flame retardant</b>	BS7176 Crib 5, BS EN 1021-1:2006 1&2, BS5852 Crib 5, IMO Annex 1 Part 8.
<b>Anti-bacterial/Anti-fungal</b>	Resistant to microbial or fungal growth including Salmonella, E Coli and MRSA.
<b>Waterproof</b>	Hydrostatic Head BS3424 > 1 metre.
<b>Martindale</b>	Severe Contract > 400,000.
<b>Stain resistant</b>	Excellent stain removal has been observed for grease, ink, blood, urine, coffee, iodine, betadine, ketchup, chewing gum, chocolate, grape juice.
<b>Composition</b>	2% Vinyl Acrylic, 71% PVC, 9% Cotton, 18% Polyester..
<b>Width</b>	140cm (55") wide.
<b>Weight</b>	650gm ±5%

### Technical Information

- We recommend a minimum of 32 stitches per 10 cm (8 stitches per inch) and seams must have a minimum 12mm (0.5") bite on the fabric.
- Can be stitched, tacked and glued. Cannot be heat welded.
- Please note that all fabric offered is subject to minor tolerance in respect of shade and other slight variations.
- Paint Pot can be colour co-ordinated with other Agua collections to produce stunning dual textured finishes.
- Bespoke colours can be produced subject to minimum quantity orders.
- Technical specifications may be amended, please check for the latest information.
- Please ask if you require a sample of the current batch available but be aware that stock can move quickly.

### Fabric Care

- Poorly fixed clothing dyes, e.g. denim, will cause permanent staining. Most stains can be removed using cold/warm water and a clean microfibre cloth.
- Use a vacuum cleaner or soft brush to remove dust and solid particles.
- Wipe frequently with a damp cloth to maintain the appearance of the fabric.
- Remove all stains immediately before they set. All spillages should be removed immediately with a clean absorbent cloth.
- If soap based cleaners are used, all soap residues must be rinsed from the fabric.
- Can be steam cleaned in situ.
- Do not machine wash or dry clean.
- Can be cleaned with mild Hypochlorite solutions (10,000 ppm of available chlorine) e.g.: Haz Tabs, Chlor-Clean. Continued use may cause discolouration and surface damage.
- Always try cleaning products on a hidden piece of fabric to test suitability.
- Do not use: solvents, abrasives, chemical agents, waxes or polishes as this will damage the surface of the fabric.
- Do not use marker pens on the back of the fabric.
- Please refer to the Paint Pot Fabric Technical Specifications PDF download on the Agua website for further details.

### Our Environmental Policy

Our products have always been phthalate free and Reach\* compliant. Our processes are non-toxic and the methods used during manufacture and finishing ensure that potentially hazardous accidental cross contamination is minimised to the greatest degree possible. All our fabrics meet the stringent Oeko-Tex\*\*

standards, regardless of origin, so are free from harmful chemicals and safe for human use.

\* Registration, Evaluation, Authorisation and Restriction of Chemicals (EU regulation: 18th December 2006)

\*\* See more: [www.oeko-tex.com](http://www.oeko-tex.com)



### Samples and Enquires

You can contact us for samples, order enquiries or information about any of our fabric ranges here:

Agua Fabrics Ltd,  
Hyde House,  
The Hyde, London NW9 6LH  
T +44 (0)20 8205 0050  
E [info@aguafabrics.com](mailto:info@aguafabrics.com)  
[www.aguafabrics.com](http://www.aguafabrics.com)

AGUA  
PERFORMANCE UPHOLSTERY FABRICS



Certificate No. FS 531220



PlanetMark Certified Business



PlanetMark  
Certified  
Business



Anti-Microbial



Bleach  
Cleanable



Fire Retardant  
Crib 5/IMO



Stain  
Resistant



Waterproof



> 400k  
Martindale  
Abrasion  
Severe  
Contract



Phthalate  
Free



REACH  
Compliant



Paint Pot Pebble



Paint Pot Ivory



Paint Pot Beige



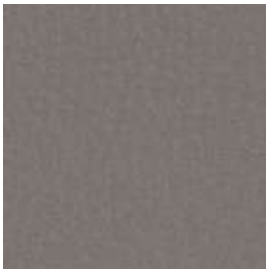
Paint Pot Grey



Paint Pot Mushroom



Paint Pot Mustard



Paint Pot Steel



Paint Pot Mink



Paint Pot Burnt Orange



Paint Pot Graphite



Paint Pot Silver



Paint Pot Claret



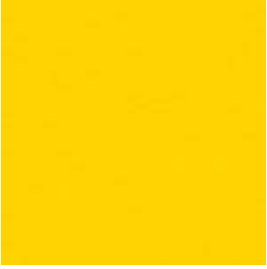
Paint Pot Black



Paint Pot Brown



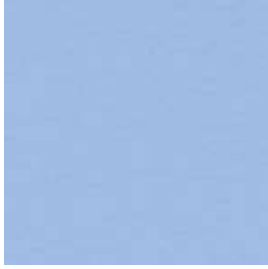
Paint Pot Chestnut



Paint Pot Yellow



Paint Pot Purple



Paint Pot Sky



Paint Pot Lime



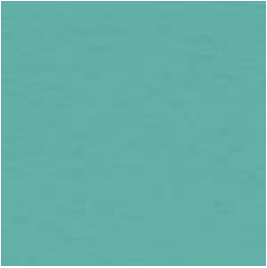
Paint Pot Orange



Paint Pot Royal



Paint Pot Azure



Paint Pot Spearmint



Paint Pot Rose



Paint Pot Wedgwood



Paint Pot Sapphire



Paint Pot Teal



Paint Pot Scarlet



Paint Pot Ink



Paint Pot Blue



Paint Pot Emerald



Paint Pot Marine



Paint Pot Grass



# AGUA

PERFORMANCE UPHOLSTERY FABRICS

## Linetta Collection

Linen style fabric for indoor upholstery

## Linetta

Sophisticated linen-style fabric for indoor upholstery

Perfect for:

Commercial, cruise, hospitality, leisure and senior living

Fabric Specifications

<b>Flame retardant</b>	BS7176 Crib 5, BS EN 1021-1:2006 1&2, BS5852 Crib 5, IMO Annex 1 Part 8.
<b>Anti-bacterial/Anti-fungal</b>	Resistant to microbial or fungal growth including Salmonella, E Coli and MRSA.
<b>Waterproof</b>	Hydrostatic Head BS3424 > 1 metre.
<b>Martindale</b>	Severe Contract > 100,000.
<b>Stain resistant</b>	Excellent stain removal has been observed for grease, ink, blood, urine, coffee, iodine, betadine, ketchup, chewing gum, chocolate, grape juice.
<b>Composition</b>	100% Treated polyester.
<b>Breathable</b>	Moisture vapour permeable.
<b>Width</b>	140cm (55") wide.

### Technical Information

- We recommend a minimum of 32 stitches per 10 cm (8 stitches per inch) and seams must have a minimum 12mm (0.5") bite on the fabric.
- Not suitable for use as removable loose covers.
- Please note that all fabric offered is subject to minor tolerance in respect of shade and other slight variations.
- Technical specifications may be amended, please check for the latest information.
- Please ask if you require a sample of the current batch available but be aware that stock can move quickly.
- Linetta can be colour co-ordinated with Agua faux leather collections to produce stunning furniture with dual textured finishes.
- Bespoke colours can be produced subject to minimum quantity orders.

### Fabric Care

- Use a vacuum cleaner or soft brush to remove dust and solid particles.
- Always try cleaning products on a hidden piece of fabric to test suitability.
- Wipe frequently with a damp cloth to maintain the appearance of the fabric.
- All spillages should be removed immediately with a clean absorbent cloth.
- Poorly fixed clothing dyes, e.g. Denim, will cause permanent staining. Most stains can be removed using cold/warm water and a clean microfibre cloth.
- Stains from products containing oil and grease should be treated with a spirit based solution.
- Can be steam cleaned in situ.
- Can be cleaned with mild Hypochlorite solutions (up to 10,000 ppm of available chlorine - including Haz Tabs and Chlor-Clean) or Mineral Spirit for infection control purposes.
- If soap based cleaners are used, all soap residues must be rinsed from the fabric.
- Do not machine wash or dry clean.
- Remove all stains immediately before they set.
- Please refer to the Linetta Fabric Technical Specifications PDF download on the Agua website for further details.
- Do not use solvents, chemical agents, waxes or polishes as this will damage the surface of the fabric.

### Our Environmental Policy

Our products have always been phthalate free and Reach\* compliant. Our processes are non-toxic and the methods used during manufacture and finishing ensure that potentially hazardous accidental cross contamination is minimised to the greatest degree possible. All our fabrics meet the stringent Oeko-Tex\*\*

standards, regardless of origin, so are free from harmful chemicals and safe for human use.

\* Registration, Evaluation, Authorisation and Restriction of Chemicals

(EU regulation: 18th December 2006)

\*\* See more: [www.oeko-tex.com](http://www.oeko-tex.com)

### Samples and Enquires

You can contact us for samples, order enquiries or information about any of our fabric ranges here:

Agua Fabrics Ltd,  
Hyde House,  
The Hyde, London NW9 6LH  
T +44 (0)20 8205 0050  
E [info@aguafabrics.com](mailto:info@aguafabrics.com)  
[www.aguafabrics.com](http://www.aguafabrics.com)



**AGUA**  
PERFORMANCE UPHOLSTERY FABRICS



Anti-Microbial



Bleach  
Cleanable



Fire Retardant  
Crib 5/IMO



Stain Resistant



Waterproof



Martindale Abrasion  
Severe Contract



Phthalate  
Free



REACH  
Compliant

Linetta Collection | v.15.5





Linetta Silver



Linetta Light Grey



Linetta Slate



Linetta Mint



Linetta Light Blue



Linetta Steel



Linetta Nutmeg



Linetta Duck Egg



Linetta Denim



Linetta Charcoal



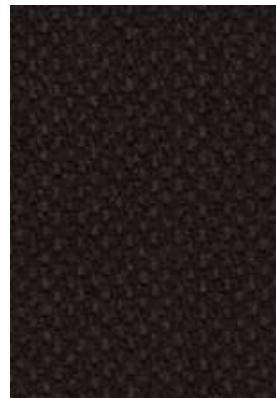
Linetta True



Linetta Teal



Linetta Midnight



Linetta Black



Linetta Chocolate



Linetta Cream



Linetta Salmon



Linetta Olive



Linetta Grape



Linetta Sand



Linetta Burnt Orange



Linetta Lime



Linetta Purple



Linetta Gold



Linetta Red



Linetta Orchid



Linetta Damson



Linetta Mustard



Linetta Plum



Linetta Violet



# AGUA

PERFORMANCE UPHOLSTERY FABRICS

## Libra Collection

Deep pile and hard-wearing  
performance upholstery fabric

aguaguard<sup>+</sup>  
365

Anti-Microbial Technology  
Powered by HeiQ ViroBlock  
Effective against bacteria and  
viruses – including COVID-19



Anti-Microbial



Bleach  
Cleanable



Fire Retardant  
Crib 5/IMO



Stain Resistant



Waterproof



Martindale Abrasion  
Severe Contract



Phthalate  
Free



REACH  
Compliant

## Libra

Deep pile and hard-wearing performance upholstery fabric.

Perfect for:  
Commercial, cruise, healthcare, hospitality and leisure.

### Fabric Specifications

<b>Flame retardant</b>	BS7176 Crib 5, BS EN 1021-1:2006 1&2, BS5852 Crib 5, IMO Annex 1 Part 8.
<b>Anti-Microbial protection</b>	AguaGuard365 (powered by HeiQ ViroBlock) effective against bacteria and viruses including Covid-19, Salmonella, E Coli and MRSA. Resistant to fungal growth.
<b>Waterproof</b>	Hydrostatic Head BS3424 > 1 metre.
<b>Martindale</b>	Severe Contract > 100,000.
<b>Stain resistant</b>	Excellent stain removal has been observed for grease, ink, blood, urine, coffee, iodine, betadine, ketchup, chewing gum, chocolate, grape juice.
<b>Breathable</b>	Moisture vapour permeable.
<b>Composition</b>	100% treated polyester.
<b>Width</b>	142cm (56") wide.

### Technical Information

- We recommend a minimum of 32 stitches per 10 cm (8 stitches per inch) and seams must have a minimum 12mm (0.5") bite on the fabric.
- Not suitable for use as removable loose covers.
- Please note that all fabric offered is subject to minor tolerance in respect of shade and other slight variations.
- Technical specifications may be amended, please check for the latest information.
- Please ask if you require a sample of the current batch available but be aware that stock can move quickly.
- Libra can be colour co-ordinated with Agua faux leather collections to produce stunning furniture with dual textured finishes.
- Bespoke colours can be produced subject to minimum quantity orders.

### Fabric Care

- Use a vacuum cleaner or soft brush to remove dust and solid particles.
- Always try cleaning products on a hidden piece of fabric to test suitability.
- Wipe frequently with a damp cloth to maintain the appearance of the fabric.
- All spillages should be removed immediately with a clean absorbent cloth.
- Poorly fixed clothing dyes, e.g. Denim, will cause permanent staining. Most stains can be removed using cold/warm water and a clean microfibre cloth.
- Stains from products containing oil and grease should be treated with a spirit based solution.
- Can be steam cleaned in situ.
- Can be cleaned with mild Hypochlorite solutions (up to 10,000 ppm of available chlorine - including Haz Tabs and Chlor-Clean) or Mineral Spirit for infection control purposes.
- If soap based cleaners are used, all soap residues must be rinsed from the fabric.
- Do not machine wash or dry clean.
- Remove all stains immediately before they set.
- Please refer to the Libra Fabric Technical Specifications PDF download on the Agua website for further details.
- Do not use solvents, chemical agents, waxes or polishes as this will damage the surface of the fabric.

### Our Environmental Policy

Our products have always been phthalate free and Reach\* compliant. Our processes are non-toxic and the methods used during manufacture and finishing ensure that potentially hazardous accidental cross contamination is minimised to the greatest degree possible. All our fabrics meet the stringent Oeko-Tex\*\*

standards, regardless of origin, so are free from harmful chemicals and safe for human use.

\* Registration, Evaluation, Authorisation and Restriction of Chemicals

(EU regulation: 18th December 2006)

\*\* See more: [www.oeko-tex.com](http://www.oeko-tex.com)

### Samples and enquires

You can contact us for samples, order enquiries or information about any of our fabric ranges here:

Agua Fabrics Ltd,  
Hyde House,  
The Hyde, London NW9 6LH  
T +44 (0)20 8205 0050  
E [info@aguafabrics.com](mailto:info@aguafabrics.com)  
[www.aguafabrics.com](http://www.aguafabrics.com)



Certificate No. FS 531220



UKAS  
MANAGEMENT  
SYSTEMS

# AGUA

PERFORMANCE UPHOLSTERY FABRICS

Libra Collection | v.9.7



Libra Brown



Libra Honey



Libra Rose



Libra Tan



Libra Gold



Libra Deep Pink



Libra Coffee



Libra Terracotta



Libra Wine



Libra Mocha



Libra Chocolate



Libra Purple



Libra Red



Libra Apple



Libra Grey



Libra Claret



Libra Bottle



Libra Charcoal



Libra Garnet



Libra Teal



Libra Black



Libra Navy



Libra Royal



Libra Midnight