

## **ELECTRIC OTTOMAN ASSEMBLY INSTRUCTIONS**

---

The Electric Ottoman strikes a perfect balance in convenience - combining storage space and ease of use.

The system is only allowed to be used in beds, slatted bed frames and/or box spring beds for the purpose of raising and lowering the lid section.

The system is not approved for use

- in healthcare areas and facilities (e.g. hospital, rest home, nursing home etc.)
- as a lifting device for heavy loads etc.
- for all other forms of use that are not in line with the appropriate application.



# Setup of the Ottoman Finishings

## Pack contents (Single Base):

- 4 x castors
- 4 x headboard bolts (if ordered)

## Pack contents (Two Bases):

- 8 x castors
- 4 x headboard bolts (if ordered)
- 2 x U-clip
- 2 x Linking Bar
- 4 x Butterfly bolts



Metal chrome castor



Headboard bolt



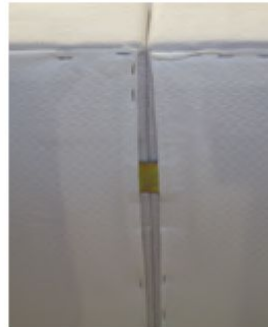
U-clip



Linking Bar



Butterfly Bolts



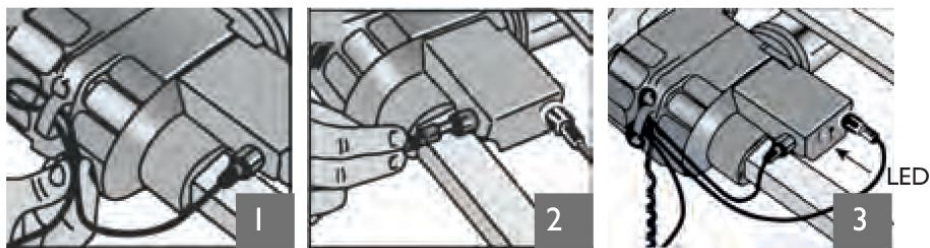
U-clips attached to lid

## Assembly instructions:

1. Insert each of the supplied castors into the holes in each corner of the underside of your ottoman base(s).
  2. Attach headboard (if ordered) using the supplied headboard bolts.
  3. If you have purchased a double, king or super king, you will need to affix the supplied U-clips onto the underside of the lid (2 x clips) of the ottoman to ensure the bases do not separate.
  4. If you have purchased a double, king or super king, affix the linking bars to each of the bed bases using the supplied butterfly bolts (2 x bolts per linking bar) to ensure that your bases do not separate. Please note that you may need to pierce the fabric of the bed base once you have determined the fixing points for the butterfly bolts.
-

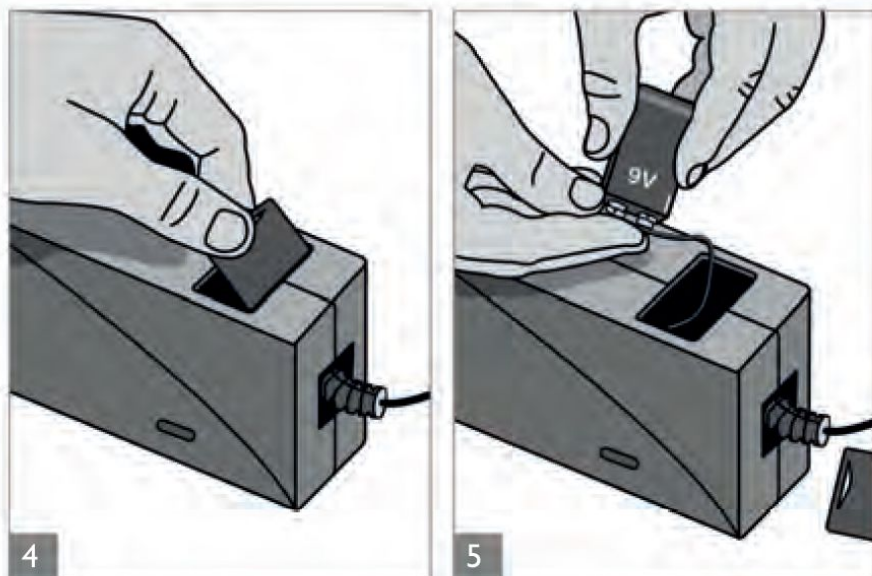
## Connecting both motors (Split bases only)

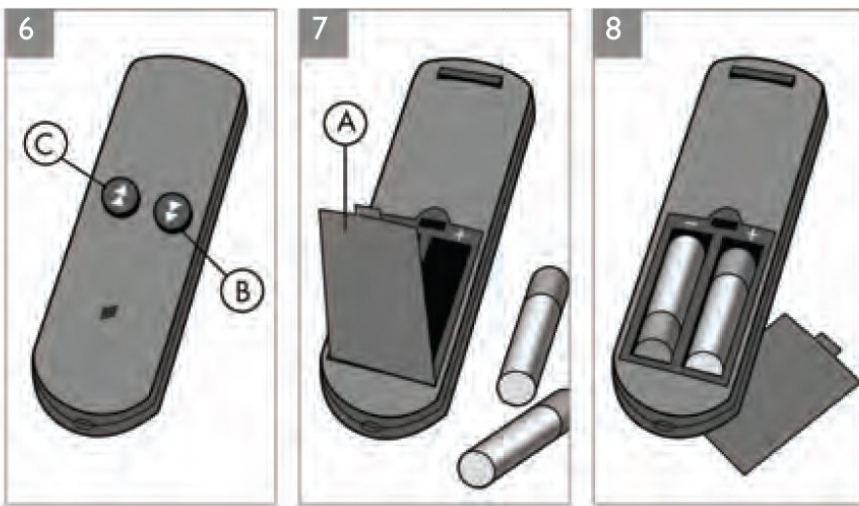
1. Thread the mains power lead round the strain relief to prevent the cable coming loose (illustration 1).
2. Connect the mains power lead into the back of the receiver box, this will be attached to one of the motors (illustration 2).
3. Insert the other synchro cable into the receiver box - the white end goes into the box also marked with a white strip.
4. Insert the other synchro cable with the black end directly into the side of the other motor.
5. Feed the cables through the pre-drilled holes in the bed bases. Make sure the cables are fed under the bed base so that the wire is not trapped by the lid of the ottoman. Join both cables in the middle, white into black.



## Inserting battery into power supply for backup

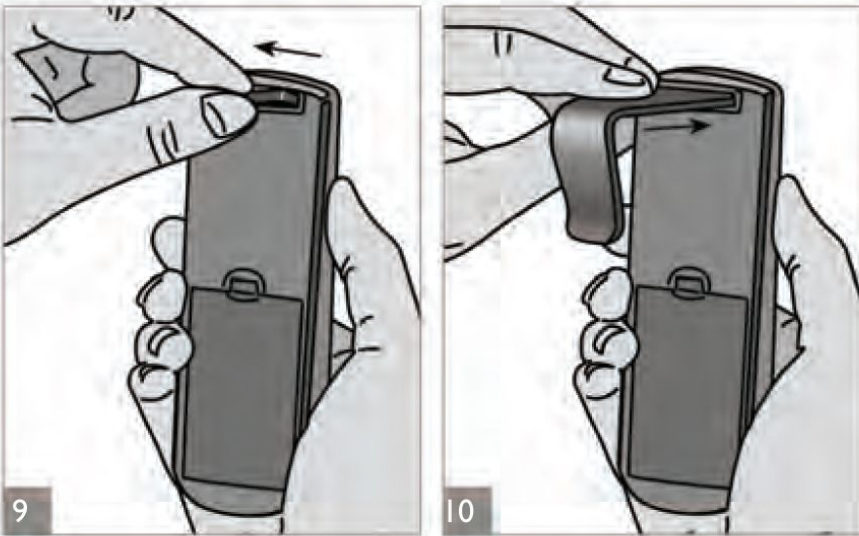
1. Remove the battery compartment cover on the power supply (illustration 4).
2. Insert 9V battery into the battery compartment (illustration 5).





## Remote control battery insertion/exchange

1. Remove the battery compartment cover (see illustration 7 "A") on the back of the remote control.
2. Insert the batteries into the battery compartment. Ensure that the polarity is correct when inserting batteries (see image in the battery compartment).
3. Close the battery compartment cover back and press any button on the remote control. If the batteries are inserted correctly, the control lamp on the motor controller (see illustration 3) should light up at each press of a button.
4. To attach the clip to the remote control, remove the rubber from the recess on the back of the remote control (see illustration 9 and insert the plastic clip (illustration 10).



## Startup - Remote / Power Supply / Motors

1. Insert the power plug into the mains socket.
2. The motor goes into the "learn mode" for approximately 30 seconds (green LED on the motor controller flashes; see illustration 3).
3. During the learning period, press any button on the remote control for approximately 5 seconds.
4. The radio system is ready for operation. The green LED on the motor controller (see illustration 3) lights up during the adjustment.
5. Run the motors down to the lowest point by pressing the down arrow on the remote control to synchronise the lifting arms (see illustration 6).
6. The ottoman should be synchronised for lifting.

Put the motor drive units one after another into operation and not several at the same time. If the "learn mode" encoding process has not been completed successfully, repeat the start-up steps above after about 2 minutes.

After a current interruption or power failure there is no need to encode the system once again as it maintains the previous encoding.