

Bedstead

ASSEMBLY GUIDE

We recommend the below process is performed by two people MINIMUM. Injury or product damage may occur if product(s) are not sufficiently supported during installation.



List of components supplied:

Headboard x 1



Foot-end panel x 1



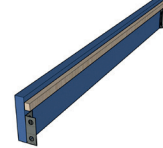
Foot x 4



Spanner x 1



Side panels x 2



Centre Beam x 1



Centre Leg x 1



Screw x 50



Bolt x 8



Slat x 9/10



Bedstead

ASSEMBLY GUIDE

We recommend the below process is performed by two people MINIMUM. Injury or product damage may occur if product(s) are not sufficiently supported during installation.

1. Insert 2 x Foot into the foot-end panel into the pre-drilled holes in the bottom of the foot-end panel and twist to secure.
2. Insert 2 x Foot into the headboard into the pre-drilled holes in the bottom of the headboard and twist to secure.
3. Affix centre leg into the hole centrally-located on the centre beam. Note: the metal brackets at the end of the centre beam should be pointing down toward the ground.
4. Remove the 4 x black bolts which have been pre-inserted into the foot end. Position 1 x side panel against the foot end. Re-insert both bolts through the holes in the corner brackets and re-tighten. Repeat for the other side rail.
5. Remove the 4 black bolts which have been pre-inserted into the headboard. Position 1 x side panel against the headboard. Re-insert both bolts through the holes in the corner brackets and re-tighten. Repeat for the other side rail.
6. Position the centre beam so that it runs down the middle of the bed (from the headboard to the foot-end panel). The plates on the end of the centre beam will interlock with the brackets which have been pre-fitted to the headboard and foot-end panels respectively.
7. Adjust height of the centre leg by spinning the foot. Ensure that the foot makes solid contact with your floor/carpet.
8. Add slats to the top of your bedstead base. These should be evenly-spaced from one another.
9. Use supplied screws - screwdriver not supplied - to fix each slat to the bed base. The two screw locations at the end of each slat will screw into the timber running along the side panel(s). The screw in the centre of the slat will screw into the centre beam. See image below for the locations in which screws should be used.

