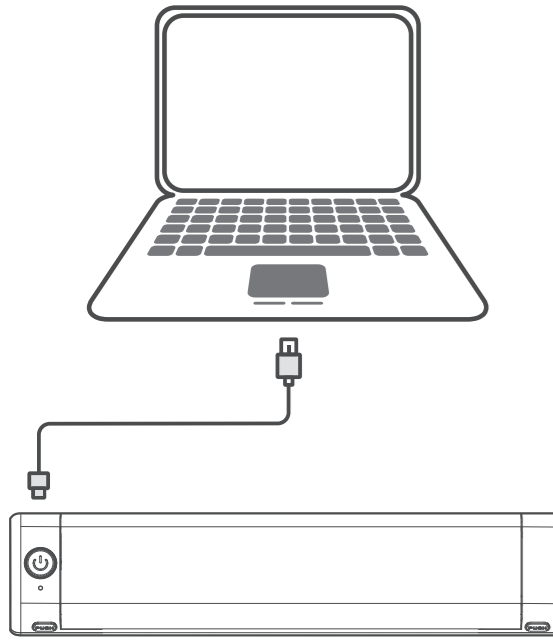
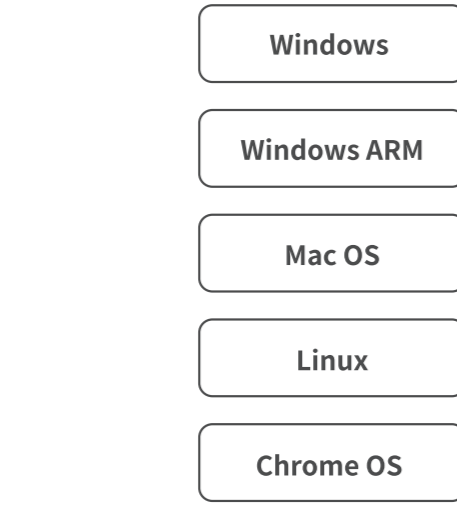


**Computer Printing with Data Cable**  
データケーブルを使用したコンピュータ印刷  
**Computerdruck mit Datenkabel**



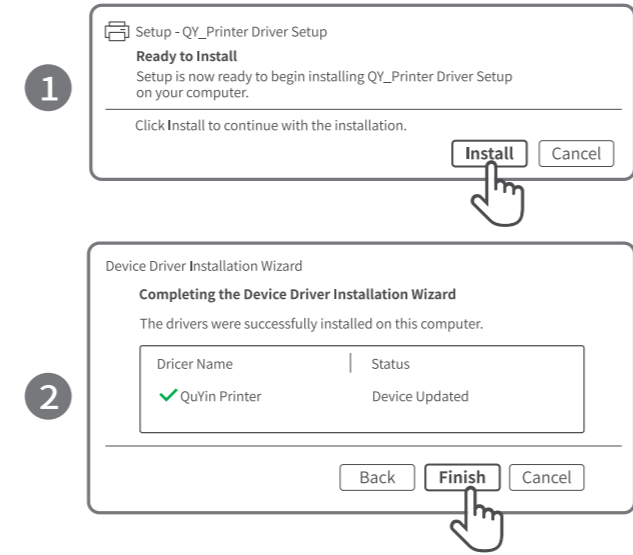
**English** Open the link: [m08f.phomemo.com](http://m08f.phomemo.com)  
**日本語** リンクを開きます: [m08f.phomemo.com](http://m08f.phomemo.com)  
**Deutsch** Öffnen Sie den Link: [m08f.phomemo.com](http://m08f.phomemo.com)

1



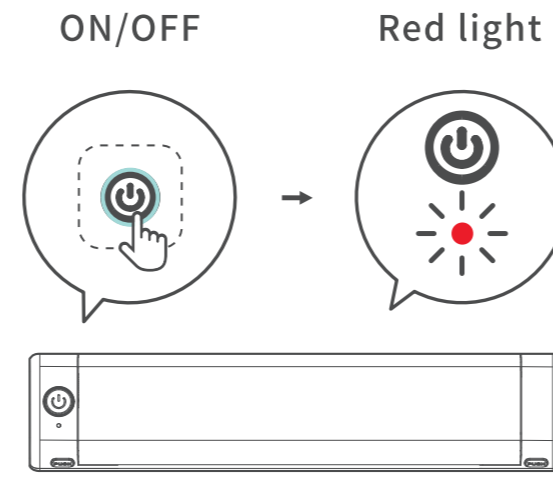
**English** Download the corresponding drive for your computer system.  
**日本語** コンピューターシステム向けのドライバをダウンロードします  
**Deutsch** Laden Sie das entsprechende Laufwerk für Ihr Computersystem herunter.

2



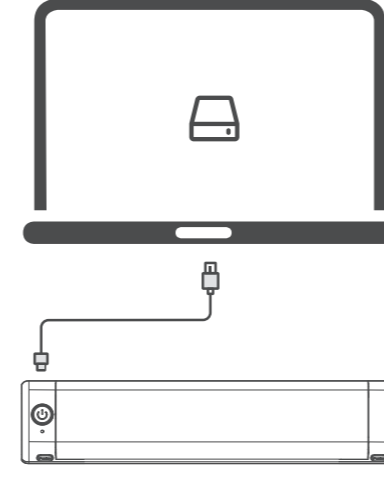
**English** Follow the above instructions to install the driver.  
**日本語** 上記の手順でドライバーをインストールしてください  
**Deutsch** Folgen Sie den obigen Anweisungen, um den Treiber zu installieren.

3



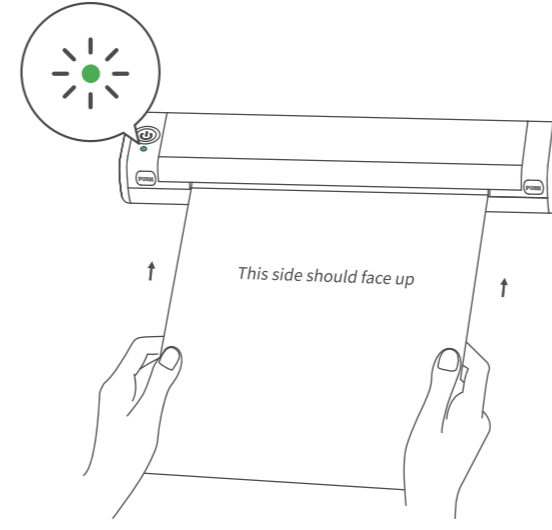
**English** Press and hold for 3s to turn on the M08F printer.  
**日本語** 3秒を長押しすると、M08F起動できる  
**Deutsch** Halten Sie 3 Sekunden lang gedrückt, um den M08F-Drucker einzuschalten.

4



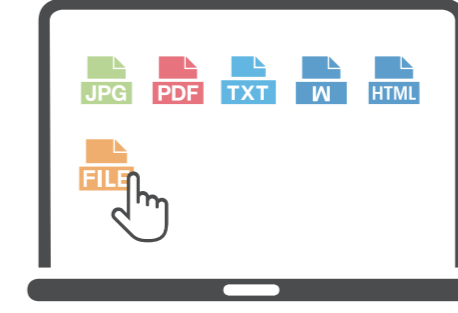
**English** Connect the printer to your computer with a Type-C data cable.  
**日本語** Type-Cデータケーブルを使用してプリンターをコンピューターに接続します  
**Deutsch** Schließen Sie den Drucker mit einem Typ-C-Datenkabel an Ihren Computer an.

5



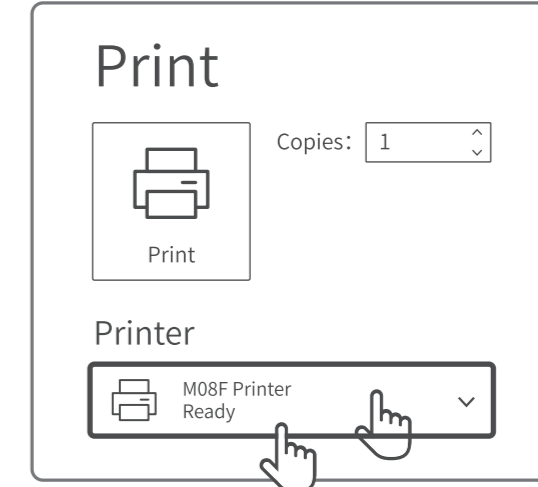
**English** Load the paper according to the prompt.  
**日本語** プロンプトに従って用紙をセットします  
**Deutsch** Legen Sie das Papier gemäß der Aufforderung ein.

6



**English** Right-click the file and click the print button.  
**日本語** ファイルを右クリックして、印刷ボタンをクリックします  
**Deutsch** Klicken Sie mit der rechten Maustaste auf die Datei und klicken Sie auf die Schaltfläche „Drucken“.

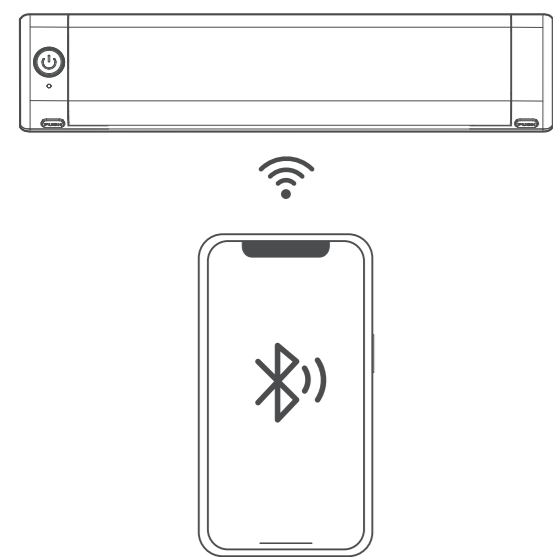
7



**English** Select M08F on your computer and start printing.  
**日本語** コンピューターでM08Fを選択し、印刷を開始します  
**Deutsch** Wählen Sie M08F auf Ihrem Computer und starten Sie den Druckvorgang.

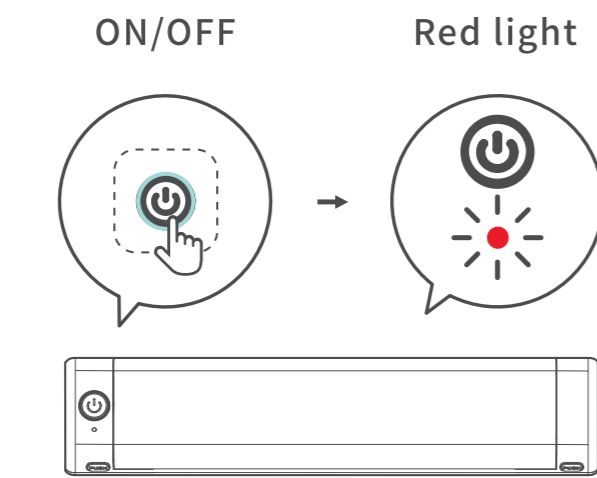
8

**Smartphone-controlled**  
スマートフォンと接続する  
**Smartphone-Steuerung**



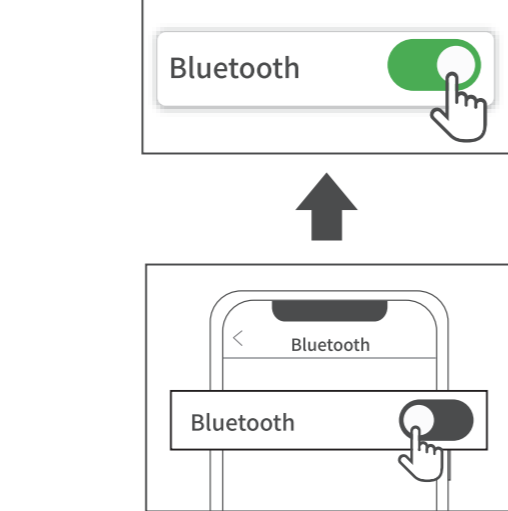
**English** Get/install the Phomemo App.  
**日本語** Phomemoアプリをインストールする  
**Deutsch** Holen/installieren Sie die Phomemo App.

1



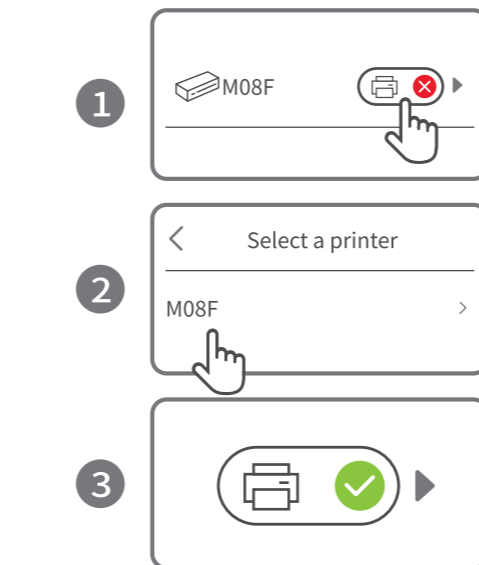
**English** Press and hold for 3s to turn on the M08F printer.  
**日本語** 3秒を長押しすると、M08F起動できる  
**Deutsch** Halten Sie 3 Sekunden lang gedrückt, um den M08F-Drucker einzuschalten.

2



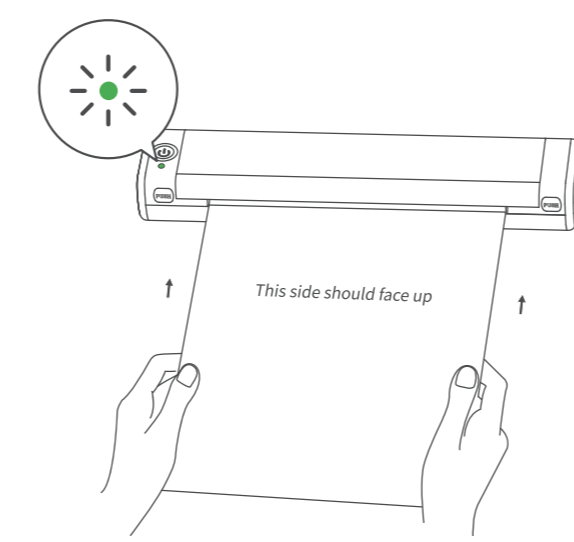
**English** Turn on Bluetooth from phone settings.  
**日本語** スマートフォンの設定からBluetoothをオンにする  
**Deutsch** Aktivieren Sie Bluetooth über die Telefoneinstellungen.

3



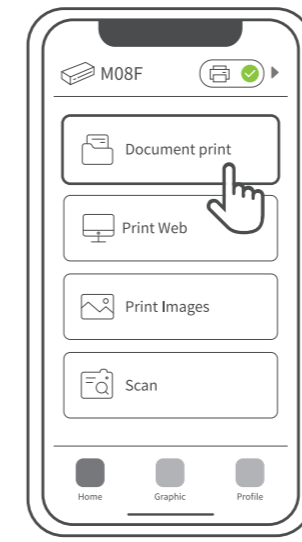
**English** Connect the printer via Bluetooth in the phomemo App.  
**日本語** phomemoアプリでBluetoothを利用してM08Fと接続する  
**Deutsch** Verbinden Sie den Drucker über Bluetooth in der Phomemo App.

4



**English** Load the paper according to the prompt.  
**日本語** プロンプトに従って用紙をセットします  
**Deutsch** Legen Sie das Papier gemäß der Aufforderung ein.

5



**English** Select the file in the Phomemo App to print.  
**日本語** Phomemoアプリでファイルを選択して印刷する  
**Deutsch** Wählen Sie die zu druckende Datei in der Phomemo App aus.

6

**FCC Warning**

This device complies with part 15 of the FCC Rules. Operation is subject to the following two conditions: (1) This device may not cause harmful interference, and (2) this device must accept any interference received, including interference that may cause undesired operation. Any Changes or modifications not expressly approved by the party responsible for compliance could void the user's authority to operate the equipment.

This equipment has been tested and found to comply with the limits for a Class B digital device, pursuant to part 15 of the FCC Rules. These limits are designed to provide reasonable protection against harmful interference in a residential installation. This equipment generates uses and can radiate radio frequency energy and, if not installed and used in accordance with the instructions, may cause harmful interference to radio communications. However, there is no guarantee that interference will not occur in a particular installation. If this equipment does cause harmful interference to radio or television reception, which can be determined by turning the equipment off and on, the user is encouraged to try to correct the interference by one or more of the following measures:

- Reorient or relocate the receiving antenna.
- Increase the separation between the equipment and receiver.
- Connect the equipment into an outlet on a circuit different from that to which the receiver is connected.
- Consult the dealer or an experienced radio/TV technician for help.

The device has been evaluated to meet general RF exposure requirement. The device can be used in portable exposure condition without restriction.

**IC Warning**

IC Caution:  
Radio Standards Specification RSS-Gen, issue 5- English:  
This device contains licence-exempt transmitter(s)/receiver(s) that comply with Innovation, Science and Economic Development Canada's licence-exempt RSS(s). Operation is subject to the following two conditions: This device may not cause interference. This device must accept any interference, including interference that may cause undesired operation of the device.  
RF exposure statement:  
The device has been evaluated to meet general RF exposure requirement. The device can be used in portable exposure condition without restriction.

- French:  
Cet appareil contient des émetteurs / récepteurs exempts de licence conformes aux RSS (RSS) d'Innovation, Sciences et Développement économique Canada. Le fonctionnement est soumis aux deux conditions suivantes:  
Cet appareil ne doit pas causer d'interférences.  
Cet appareil doit accepter toutes les interférences, y compris celles susceptibles de provoquer un fonctionnement indésirable de l'appareil.  
Déclaration d'exposition RF:  
L'appareil a été évalué pour répondre aux exigences générales d'exposition aux RF. L'appareil peut être utilisé dans des conditions d'exposition portable sans restriction.



Scan the QR code to view more instructions.  
QRコードをスキャンして詳しい説明書を見る  
Scannen Sie den QR-Code, um weitere Anweisungen anzuzeigen.



M08F

**Quick Start Guide**