

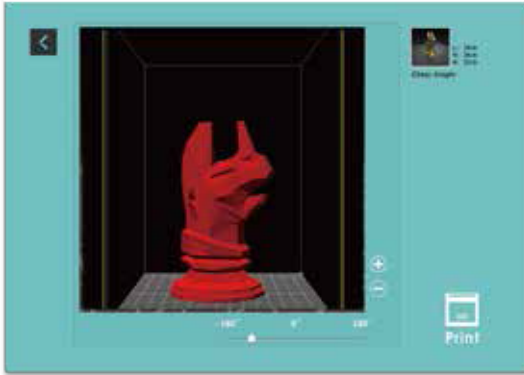
3D PRINTER SUPERSTORE

your one stop 3d printer shop

XYZWare's Creative EZ mode

Designed for beginners. EZ mode makes 3D printing quick and easy!

- A. Select an object you like
- B. Preview and scale
- C. Print



ABS Filament 600g



Dimensions

Dimension w/ Cartridge (WxHxD)
18.4 x 20 x 22 inch (46.8 x 51 x 55.8 cm)

Package

Package Dimension
22.1 x 23.3 x 27.6 inch (56 x 59 x 70 cm)
Package Gross Weight
62.8 lb (27.5kg)

Printing Spec

Technology
FFF (Fused Filament Fabrication)
Maximum Build Volume (WxHxD)
5.9W x 7.8H x 7.8D inch (15x20x20cm)
Printing Mode
Fine 0.1 mm (100 microns)
Standard 0.2 mm (200 microns)
Speed 0.3 mm (300 microns)
Ultra Fast 0.4 mm (400 microns)
Print Head
Dual Nozzle
Nozzle Diameter
0.4 mm
Filament Diameter
1.75 mm

Display

Panel Type
2.6" FSTN LCM
Language
English, Japanese
Connectivity
USB 2.0

Software(XYZWare)

File Types
.stl , XYZ Format
OS Support
Windows XP (.Net 4.0 required) and Windows 7 above (for PC)
Mac OSX 10.8 64-bit above (for Mac)

Hardware

Hardware Requirements (for PC/Mac)
X86 32/64-bit compatible PCs with 2GB+ DRAM (for PC)
X86 64-bit compatible Macs with 2GB+ DRAM (for Mac)

※ Product features, price, and specification are subject to change without notice.



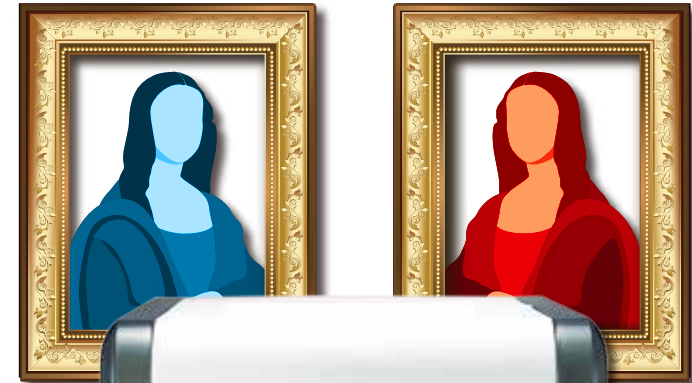
Email: info@xyzprinting.com



da Vinci 2.0 Duo

Double the Productivity
Double the Fun!

Dual Extruder 3D Printer Has Never Been This Approachable





Dual Extruders

da Vinci 2.0 Duo features two extruders allowing you to create multi-color projects using the 12 filament colors available in easy-to-install cartridges.



Cloud Library

Hundreds of 3D models available. Share, create, and print online with the XYZWorld community. Unleash the endless possibility of 3D printing



Safe

- Closed printing area protects users from the high temperatures required to print
- No external filament movement during operation
- CE certified

da Vinci 2.0 Duo



Low Maintenance

- Print-bed detection and assisted leveling
- Automatic nozzle cleaning
- Plug-and-Play printer. No assembly required



Great Value

Dual extruder printers have never been this approachable ever!



Easy Loading

- Cassette-like filament cartridge makes filament changing an easy task
- Low filament alert

