



# HANG & DISPLAY®

PART OF ISD

## Bulk It!

**PROVIDE YOUR CUSTOMERS WITH  
THE OPPORTUNITY TO BUY MORE  
RESPONSIBLY AND SUSTAINABLY**  
with our bulk merchandising  
solutions



*be smart. be safe. be green.*

**100%**  
DESIGNER &  
MANUFACTURER

[hanganddisplay.com.au](http://hanganddisplay.com.au)

# Bulk it!

be smart. be safe. be green.



## KEY FIGURES

50%

of Australians think food and drink products are over-packaged

Source: Retail Food Sector Report 2019, GAIN Number AS1910

100%

of food packaging in Australia must be reusable, recyclable or compostable by 2025.

Source: Australian Government Waste Management Review 2018

\$25B

by 2030 is the value that health and wellness foods, sustainable solutions and premium segments can achieve through a growth opportunity of about 3.6% per year.

Source: CSIRO Growth opportunities for Australian food business

## WITH BULK IT!



### GO FOR BULK, SUPPORT SUSTAINABLE SHOPPING

**Bulk is part of an eco-responsible trend** and has become a true attraction for customers over the years. This helps you to stand out from all others and encourage customers to choose your store.



### INCREASE AVERAGE BASKET SIZE, ENHANCE IMPULSE BUYING

**The fun side of these systems boosts impulse sales**, since it offers customers the opportunity to test new products at a lower cost and with the right quantity.



### OFFER A FUN SHOPPING EXPERIENCE, DEVELOP CUSTOMER LOYALTY.

**Buying in bulk is an attractive shopping experience**, leading to high customer conversion and loyalty. It is proven that customers who interact with products are more likely to buy them.



### WIDEN YOUR OFFER, ACQUIRE NEW CUSTOMERS

Bulk enables to create **a more authentic environment** and to differentiate a range. Some products can only be sold in bulk which increases the attractiveness of these store sections



## 100% CONTROLLED MANUFACTURING FOR OUR BULK SOLUTIONS

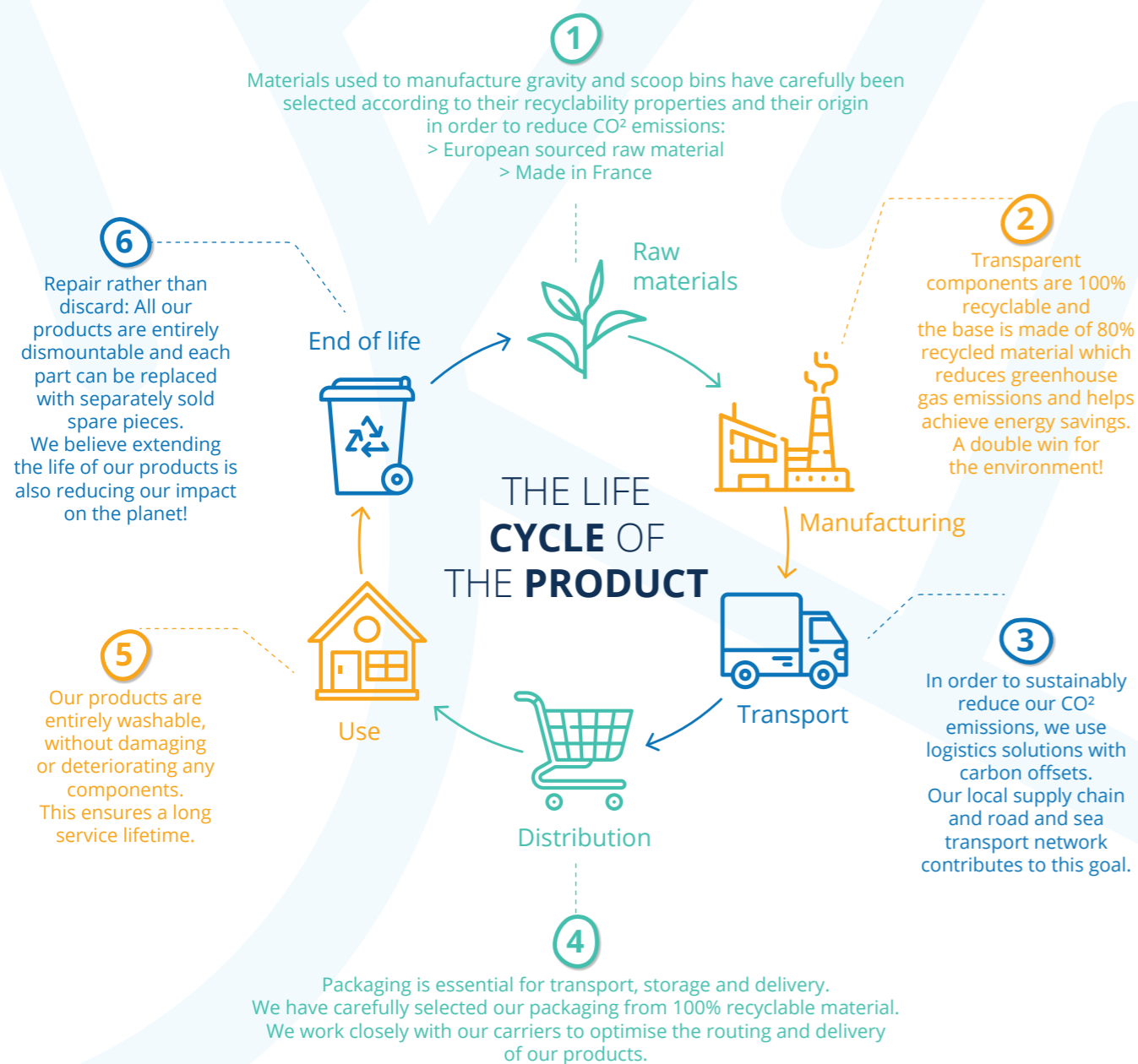
Because in-house manufacturing is a **guarantee of quality** and a **strong commitment** to our customers in terms of eco-design, we have chosen to offer you **a range of products that we master 100%**. From the design, imagined by our Innovation Department, to the manufacturing in our factories, all the production steps are carried out by our teams and we are proud of it!

## SCOOP BINS

### RELIABILITY, MODULARITY & ERGONOMICS FOR BULK SALES

### BULK IT! MORE THAN A CONSUMPTION HABIT, A STATE OF MIND!

In accordance to our eco-responsible approach, we have taken into account the entire life cycle of our gravity and scoop bins: from the choice of raw materials, production, packaging, to transportation...



be smart. be safe. be green.



# SCOOP BINS

## THE MOST MODERN AND ERGONOMIC ON THE MARKET



### INCREASE THE VISIBILITY OF YOUR PRODUCTS, BOOST YOUR SALES

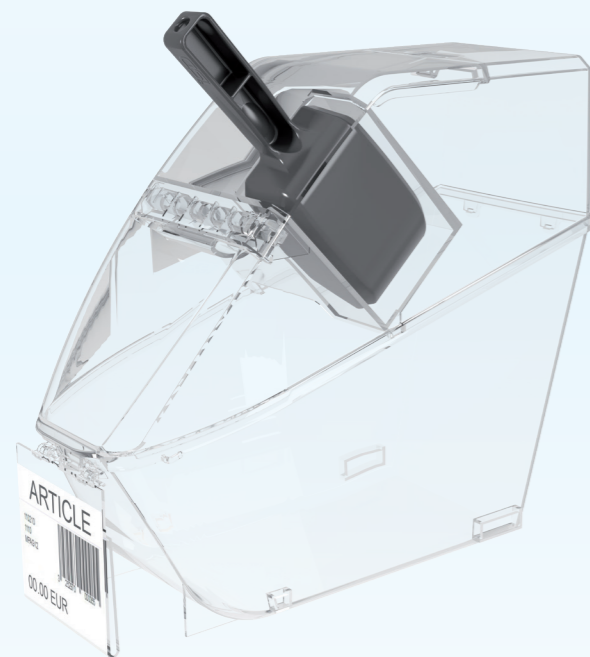
**Ergonomic design tailored to highlight the products**  
Our bins are 100% transparent which increase the visibility and the curved bottom makes it easier to scoop the products.



### REASSURE CONSUMERS, BUILD CUSTOMER LOYALTY

**A progressive automatic closing system to enhance hygiene.**  
The automatic hinged lid guarantees the freshness of the products with as little exposure to the air as possible.

**Carefully selected materials.**  
Manufactured from 100% recyclable materials selected for their food grade properties and BPA-free (Bisphenol A) composition.



### EXPAND YOUR OFFER, EXPLORE NEW OPPORTUNITIES OF GROWTH

**Optimised bin width without loss of capacity.**  
Our 15 cm bins and gravity bins are perfectly aligned to create a complete and attractive shelf space. This configuration enables to pack in 20% more variety per shelf.



# A COMPLETE AND MODULAR SOLUTION FOR NUMEROUS PRODUCT CATEGORIES



## COMPATIBLE WITH A WIDE RANGE OF DRY PRODUCTS:

- COFFEE
- BULK TEA
- NUTS
- BISCUITS
- FLOUR & GRAINS
- DRIED AND SOFT FRUITS
- CONFECTIONERY  
*And many others products...*

> You can load from 8L to 11L and vice versa, by changing only one piece!

## 2 INSTALLATION POSSIBILITIES:

### Hook-on cross bar with fitted sliding tray.

- > A secure and convenient system.
- > The tray slides forward for easy refilling.

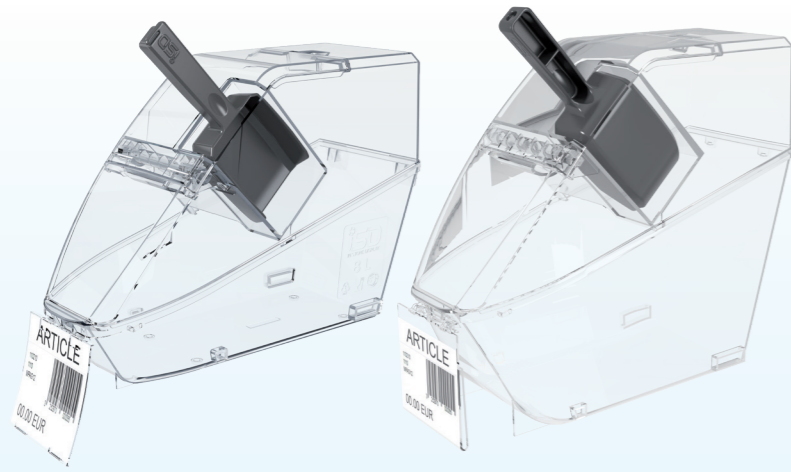
### Place on any type of shelves.

- > Ideal for creating a bulk space in a traditional shelf space.
- > A simple and economical solution.



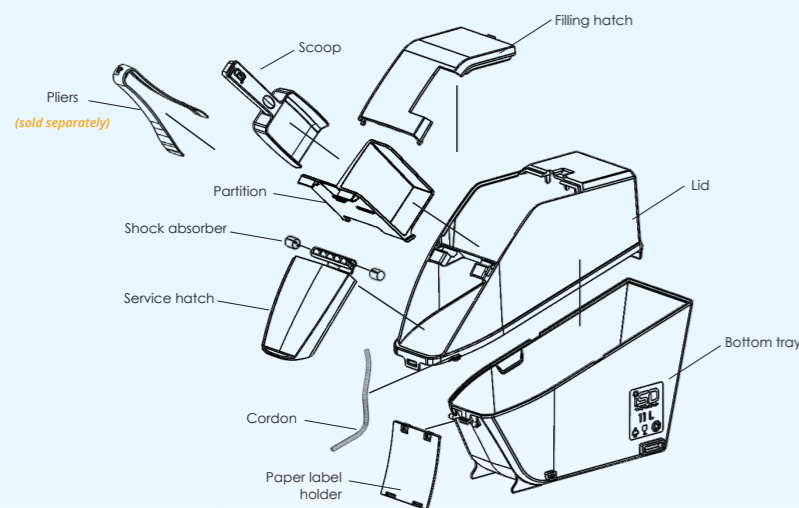
# DISCOVER OUR REFERENCES & ACCESSORIES

## Scoop Bins references



REFERENCE	BIN11	BIN12
Capacity	8 L	11 L
Width	150 mm	150 mm
Height	267 mm	327 mm
Depth	378 mm	378 mm

## References of Scoop Bins components



	8L	11L
Bottom tray	BIN50/8	BIN50/11
Lid	BIN56	
Filling hatch	BIN55	
Service hatch	BIN54	
Partition	BIN53	
Paper label holder	BIN52	
Scoop	BIN57	
Shock absorber	BIN59	
Cord	BIN15	

## Scoop Bins accessories

### INSTALLATION ACCESSORIES

SLIDE / HOLDER	
	
REF	DESIGNATION
BIN16	SCOOP BIN HOLDER

CROSSBAR	
	
REF	DESIGNATION
BIN65/1200	TELESCOPIC CB 1170 to 1185 mm
BIN65/914	TELESCOPIC CB 900 to 914 mm

### OTHER ACCESSORIES

TONGS	
	
REF	DESIGNATION
BIN58	SCOOP BIN TONGS

# GRAVITY BINS

THE SUSTAINABLE & INNOVATIVE SOLUTION FOR BULK SALES



Bulk  
it!

be smart. be safe. be green.



# WHY CHOOSE "BULK IT!" GRAVITY BINS ...



## SELL MORE, LOSE LESS

**An integrated 3 position flow-control system.** Easy use and access, it allows retailers to adjust the flow of goods according to size of the products and in this way reduce losses.



## SAVE TIME, IMPROVE YOUR PROFITABILITY

### Easy disassembly of the gravity bin.

Very easy to handle, our gravity bins can be dismantled in less than a minute thanks to their monoblock body.

### A visual gauge on the front for quick stock level checks.

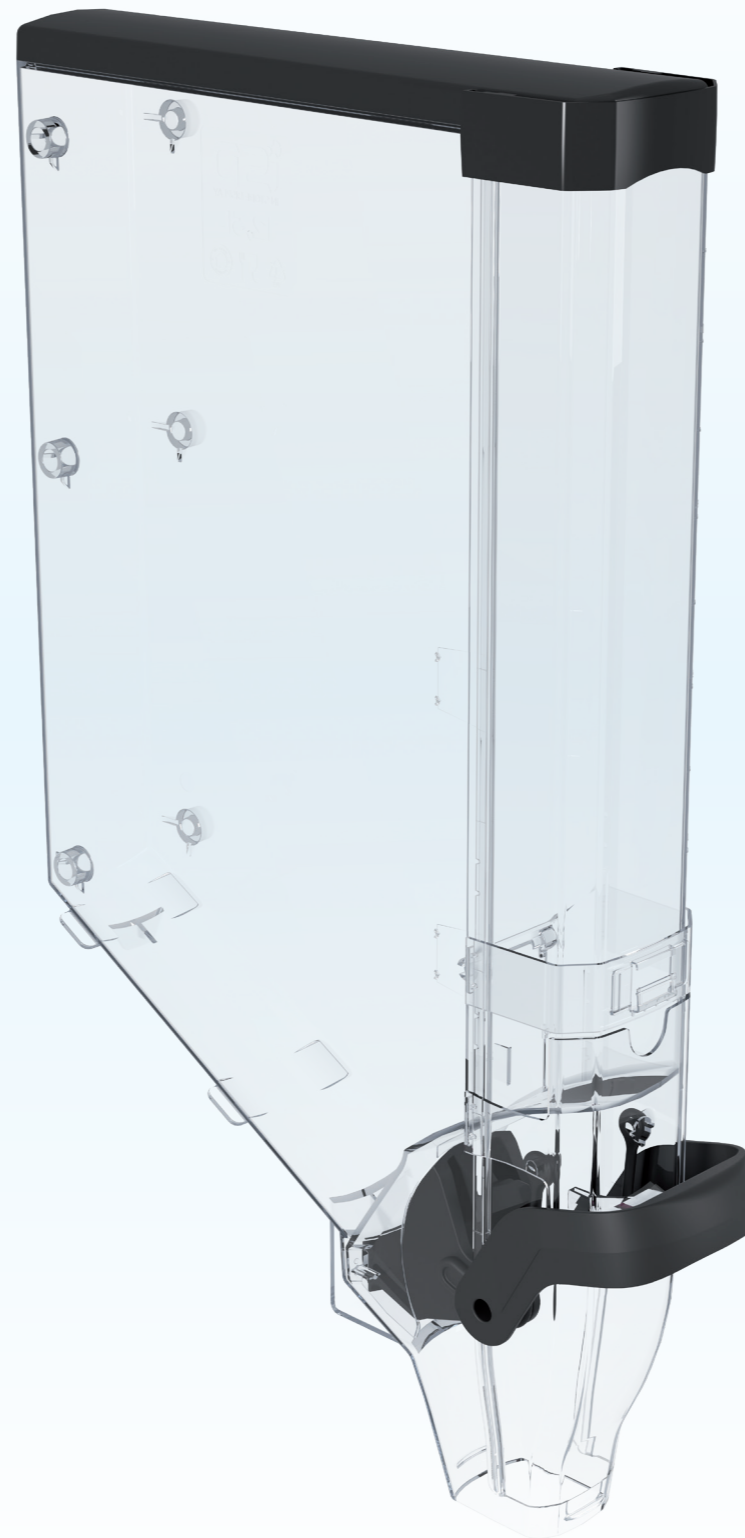
Check the product level at a glance, thanks to a built-in graduated gauge on the front, without dislodging the bins from their place.



## SECURE ACCESS TO PRODUCTS, GUARANTEE PERFECT HYGIENE

### Lid locking system.

The upper crown locks the filler cover to prevent the consumer from accessing the products.



## COMMUNICATE EFFECTIVELY, BOOST YOUR SALES

### A design at the service of the product and additional communication spaces to clarify the offer.

Inform your customers about the ingredients, allergens, nutritional information, origin and pricing thanks to the large customer facing label holder.

A version for electronic labels is also available. Segment your shelf space with a system of side lugs that allow you to position a perpendicular sign for each bin.



## BUY SUSTAINABLY, MAKE YOUR INVESTMENT PROFITABLE

### A long-lasting gravity bin.

Invest sustainably and in a waste reduction approach. The materials used for our gravity bins are safe for food contact without Bisphenol A (BPA) and are very resistant for long term use.

For our holders, we have selected metal as a component for its durability. This material is part of a continuous recycling process.



## FOCUS ON QUALITY BUY EUROPEAN

### 100% controlled manufacturing.

Designed by the ISD Group's Innovation Division and manufactured in France, our bins provide you with all the guarantees of quality and safety!



# A COMPLETE OFFER, VARIOUS FORMATS AND SIZES **SUITABLE FOR ALL NEEDS**

**100%**  
DESIGNER &  
MANUFACTURER



## COMPATIBLE WITH A VERY WIDE RANGE OF DRY PRODUCTS:

-  **LEGUMES**  
*Lentils, beans, peas, soybeans,...*
-  **GRAINS**  
*Rice, oats, bulgur, quinoa, corn, barley...*
-  **NUTS**  
*Walnuts, hazelnuts, peanuts, almonds, pistachios, cashew nuts...*
-  **APERITIF MIXES**
-  **CEREALS**
-  **GRANOLA**
-  **SEEDS**  
*Chia, sunflower, flax...*
-  **DRY PET FOOD**
-  **HERBAL TEAS**

### DIFFERENT CAPACITIES AND SIZES FOR MAXIMUM FLEXIBILITY

- > 8L and 12L - 10 cm wide
- > 14L and 21L - 15 cm wide

## CHOOSE THE IDEAL SETTING FOR YOUR STORE.

- > **On crossbar:**  
A secure and practical device.
- > **Shelf-mounted:**  
Sits on all type of shelves, thanks to a rail mounted base.



## Product benefits

-  **HYGIENE**  
Restricted accessibility, allergenic risk limitation. Contacts between foodstuffs and customers kept to a minimum.
-  **CLEANING**  
Simple and quick, easy disassembly and assembly.
-  **USE**  
Intuitive, within everyone's reach.
-  **FILLING**  
Secured access to the filling area (by store staff only).

Download our assembly manual



SCAN ME

## ADVANTAGES

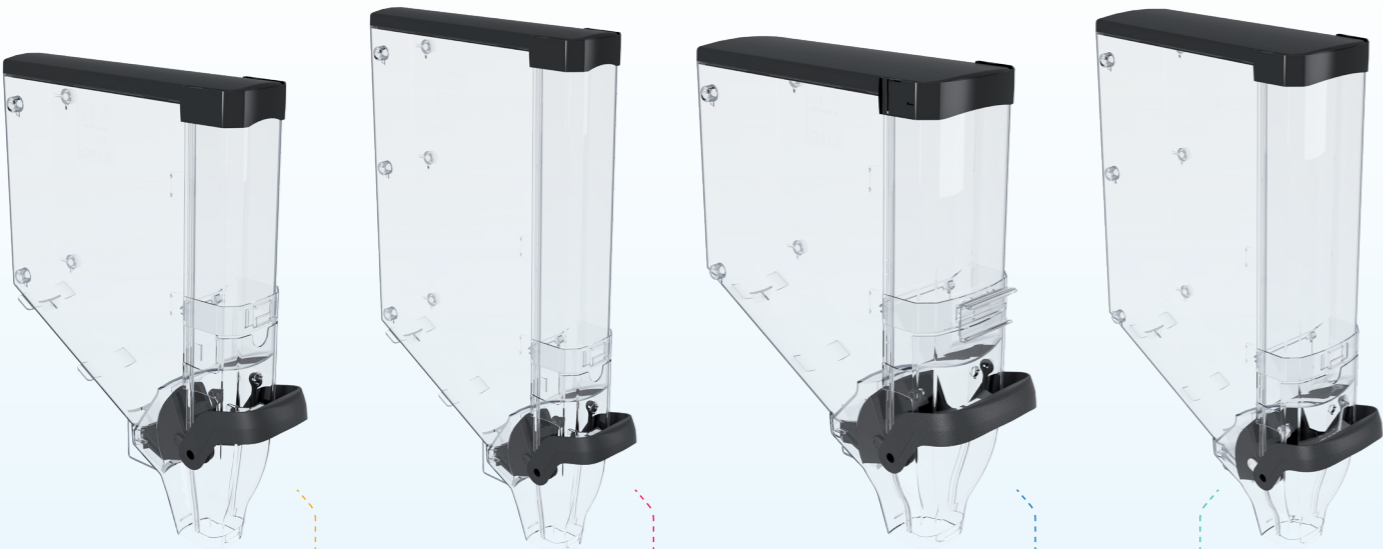
- + USE OF RECYCLABLE MATERIALS
- + GUARANTEED FOOD SAFE, BPA-FREE



# DISCOVER OUR REFERENCES & ACCESSORIES

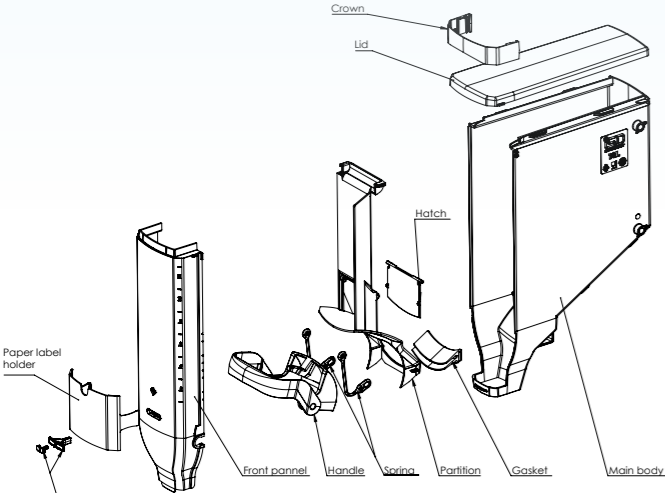


## A complete range



REFERENCE	BIN01	BIN02	BIN03	BIN04
Capacity	8 L	12 L	14 L	21 L
Width	100 mm	100 mm	150 mm	150 mm
Height	530 mm	680 mm	530 mm	680 mm
Depth	418 mm	418 mm	418 mm	418 mm

## Gravity Bins components



	GRAVITY BINS 8 L - 10 cm	GRAVITY BINS 12 L - 10 cm	GRAVITY BINS 14 L - 15 cm	GRAVITY BINS 21 L - 15 cm
Main body	BIN30/01	BIN30/02	BIN30/03	BIN30/04
Front panel	BIN31/01	BIN31/02	BIN31/03	BIN31/04
Partition	BIN32/01	BIN32/02	BIN32/03	BIN32/04
Handle	BIN34/10		BIN34/15	
Lid	BIN33/01		BIN33/02	
Crown	BIN33/03		BIN33/04	
Gasket	BIN35/10		BIN35/15	
Label holder	BIN36/10		BIN36/15	
Hatch	BIN37/10		BIN37/15	
Spring (set of 2)	BIN38			
Flow adjustment knob	BIN39			

### INSTALLATION ACCESSORIES

#### > ON CROSSBAR

CROSSBAR	HOLDER
REF	DESIGNATION
BIN63/914	REMOTE TElesc CB 900 to 914 mm
BIN64/914	TElesc CB 900 to 914 mm
BIN63/1200	REMOTE TElesc CB 1185 to 1200 mm
BIN64/1200	TElesc CB 1185 to 1200 mm

#### > ON SHELF

BASE RAIL	BASE
REF	DESIGNATION
BIN06/914	GRAVITY BIN BASE RAIL 914 mm
BIN06/1200	GRAVITY BIN BASE RAIL 1200 mm
BIN05/150	GRAVITY BIN BASE 150 mm and 100 mm

\*Rail with 2 clean adhesive strips

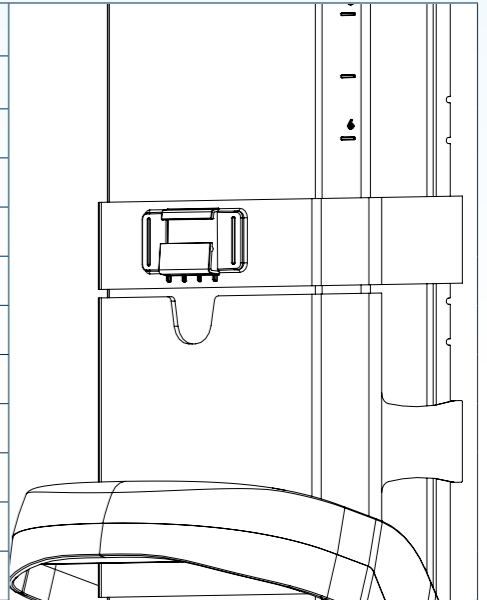
### PRICING ACCESSORIES

#### CONTAINS

> 1 label-holder support compatible with 100 or 150 mm Gravity bin  
> 1 individual label holder 54 mm or 70 mm



GRAVITY BIN ELECTRONIC LABEL HOLDER	
REF	DESIGNATION
BIN41/8	100 mm VUS 54 mm
BIN41/6	100 mm PAH 54 mm
BIN41/5	100 mm PAH 70 mm
BIN41/7	100 mm PSH 54 mm
BIN41/10	100 mm PSH 70 mm
BIN41/4	150 mm VUS 54 mm
BIN41/2	150 mm PAH 54 mm
BIN41/1	150 mm PAH 70 mm
BIN41/3	150 mm PSH 54 mm
BIN41/9	150 mm PSH 70 mm





02 97083774

[sales@hanganddisplay.com.au](mailto:sales@hanganddisplay.com.au)



*Hang & Display reserves the right to modify the products described in this document at any time and without notice. This document, the photos, texts and drawings it contains are not contractual in nature. All rights are reserved and the reproduction in whole or in part of this document is strictly forbidden without the agreement of Hang and Display Pty Ltd. May 2021 - Hang & Display, a brand of the ISD group.*

*Our sustainable approach:*



[hanganddisplay.com.au](http://hanganddisplay.com.au)