

SPV POD LIGHT FORD RAPTOR INSTALLATION INSTRUCTIONS

NOTE: It is recommended to install the brackets to the truck first....

This first section illustrates location of components & isn't the first step in the install process.

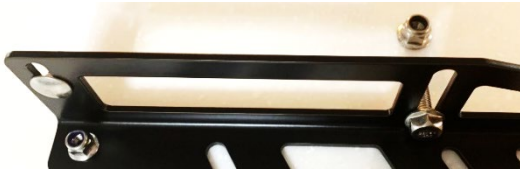
2X 8MM Bolts/Nuts & 2X 6mm Carriage bolts/Nuts

Passenger (Top) Driver (Bottom) Driver has "D" on it



Location Bolts are installed-

6mm Bolt/Nut 8mm Bolt & Nut
Far side slot Center Slot (Through Brace)



When Installing Light brackets & Lights, take note:

This is the **CORRECT** way the Brackets go on the PODS.

This is the **WRONG** way the Brackets go on the PODS.



Install the OEM U Shape light brackets to the main bracket into the 3 lower slots as shown below.

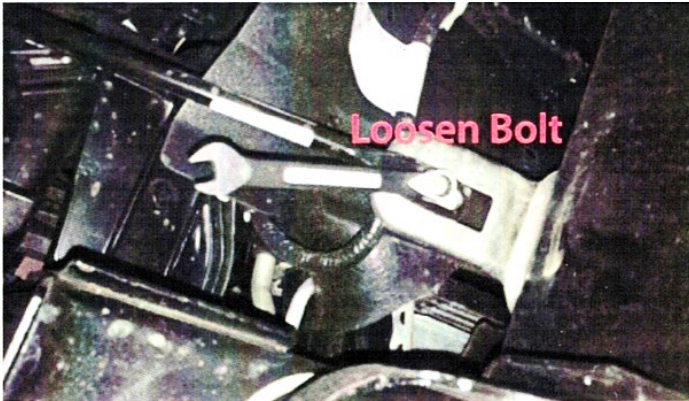
In Left photo, the Right (outer) two bolts have the **LARGER** washers installed first. The left side (Inner) does **NOT**. The larger washers are provided for smooth transition across the cross sections of the outer slots.

Notice in the **RIGHT** photo the order in which to install the bolts. Lets go through them, starting from left to right. First, The OEM U bracket provided with the lights. (This can be substituted with the flip Bracket) Next, the OEM Bolt provided with the Lights. The bolt inserts through the brackets as shown in left photo. **ALL** remaining washers and bolts go on **AFTER** the bracket. With the exception of the inner slot (Mentioned above) install the provided **LARGE** washer first, then the provided **THICK** washer next. After that, the remaining Washer, Lock washer and nut shown, are the OEM hardware that comes with the lights.

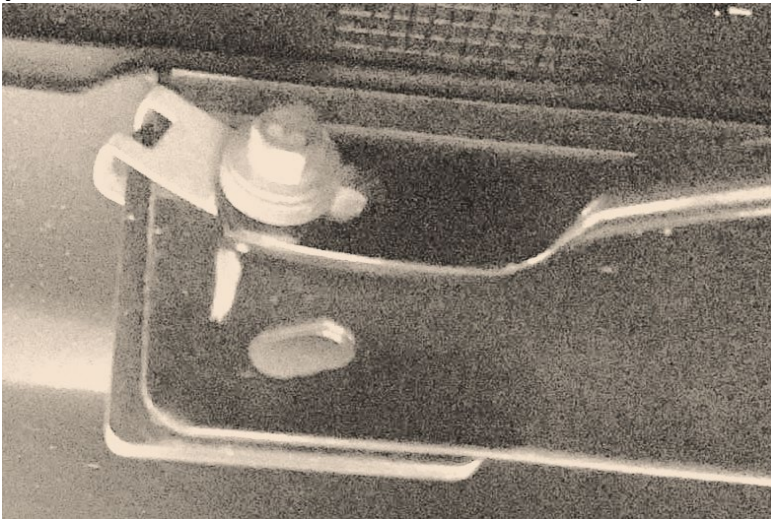


INSTALLATION STEPS-

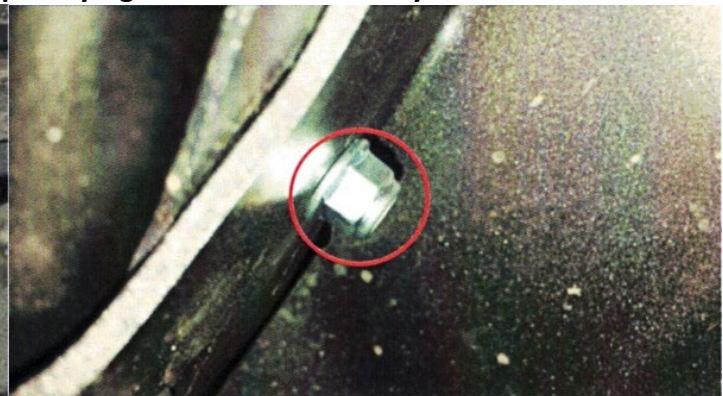
1: Loosen the bolt connecting the brace that connects from the frame, to the front bumper on the FRAME side. Then, REMOVE the bolt and the clip that go through the brace that connects to the bumper. You will REPLACE the bolt and clip with the 8mm Bolt and Nut included with the new brackets. You can see the location slot in the center in the previous sections.



2: See close up of factory bolt and clip that is to be removed to install new 8mm bolt & nut. (Left) Then see how bolt goes through the brace first, then the bracket, then the bumper from the BACKSIDE of the bumper toward the front. The lock nut is installed on the other side. Do not tighten all the way down yet. Get the slack out, but leave a little slack so you can move and position it at the end. (Right Picture)



3: Next, install the 6mm carriage bolt and nut on the end slot securing to the bumper. (Pictured below) As previously stated, take out the slack but don't completely tighten the bolts down yet.



4: Last, you will install your cube lights & their brackets to the main bracket. The slots will allow adjustment to position the lights where you want them. Their brackets also have a slot that allows side to side adjustment. The main bracket can be moved up and down for desired position. Once positioned, tighten all brackets up. Then you can connect your wires or plugs from your wire harness.