

# 17+ Backlight Wire Installation Instructions

## Step 1:

In the passenger side floor. Remove the fuse cover. Then unplug the BOTTOM plug on the fuse panel.



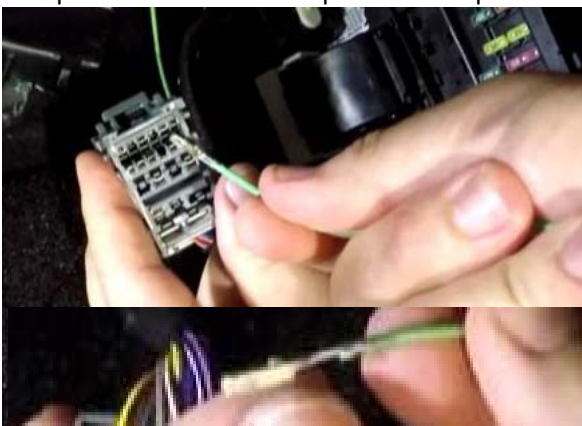
## Step 2:

Remove the red clip CAREFULLY from the bottom of the plug. Be careful not to break off the tabs on the end.



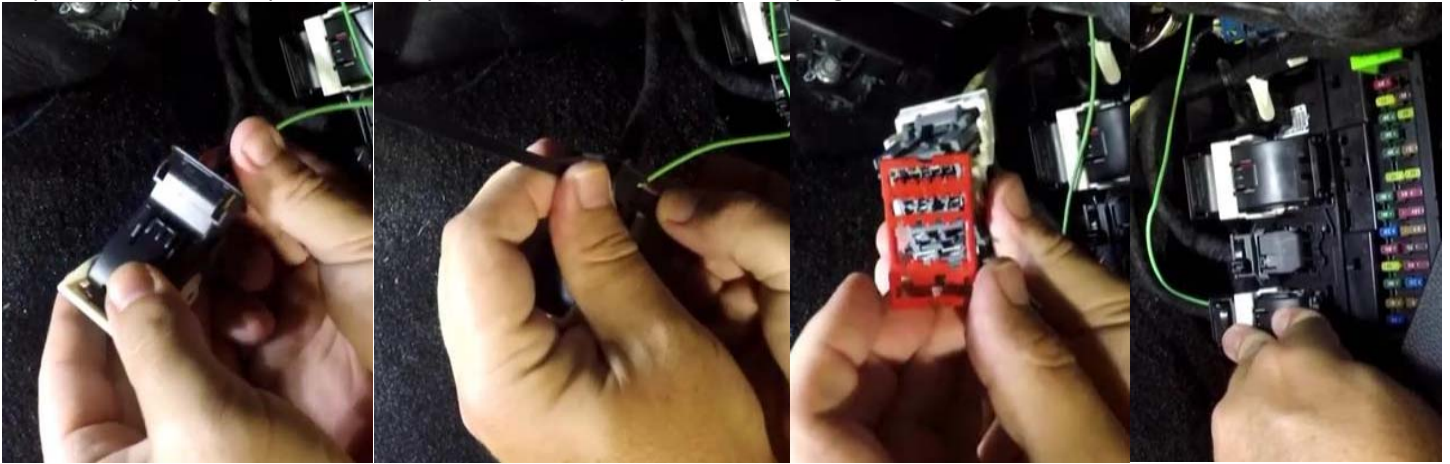
## Step 3:

Remove the zip tie from the top cover and remove the cover. Then insert the pin in the SECOND from the right hole from the backside of the plug on the top row. See pic with it being pointed to. DO NOT FORCE. If it is difficult going in, it's upside down. The FLAT part is the top.



**Step 4:**

Replace top cap and zip tie. Then replace bottom cap and reinstall plug.

**Step 5:**

Find the 6 DEAD pass through wires. They look EXACTLY like the live wires for the switches under the hood. Neither end is connected. What they are for is to patch a live switch wire under the hood to the other end under the hood so you can connect a switch to an interior item. In this case, we will use one to power our backlights. It doesn't matter which one you pick. I would get a thicker one. Just make sure you select the same color under the hood (but not the live set. Remember, they are the same color!) They will be way up and hidden ABOVE the fuse panel. Not easy to find, but they are there. You may need to remove the under cover under the glove box to find them.

**Step 6:**

See pic under hood. Find the DEAD set that now has a powered wire from your fuse panel



There is a FULL video:

<https://www.youtube.com/watch?v=GimQkilkqGg>